

## Power Distribution Switch

### Features

- 125mΩ High-Side MOSFET
- 450mA Typical Current Limit with Foldback
- Operating Range: 2.7V to 5.5V
- Under voltage Lockout
- 65μA Quiescent Supply Current
- 1μA Maximum Shutdown Supply Current
- Logic Level Enable Pin, Available with Active-High or Active-Low Version
- No Reverse Current when Power Off
- Deglitched Open-Drain Over-Current Flag Output (OC)
- Output Shutdown Pull-low Resistor
- Turn-on Soft Start 1.5ms Typical Rise Time
- SOP-8 Packages

### Applications

- High-Side Power Protection Switch
- USB Power Management
- USB Host and Self-Powered Bubs
- USB Bus-Powered Hubs
- Hot Plug-In Power Supplies
- Battery-Charger Circuits

### Ordering Information

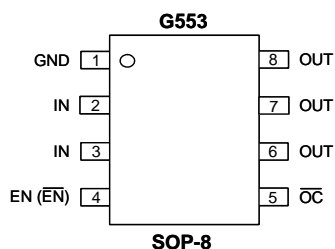
ORDER NUMBER	MARKING	ENABLE	Current Limit	TEMP. RANGE	PACKAGE (Green)
G553D1P11U	G553D1	Active High	0.45A	-40°C to +85°C	SOP-8
G553D2P11U	G553D2	Active Low	0.45A	-40°C to +85°C	SOP-8

Note: P1: SOP-8

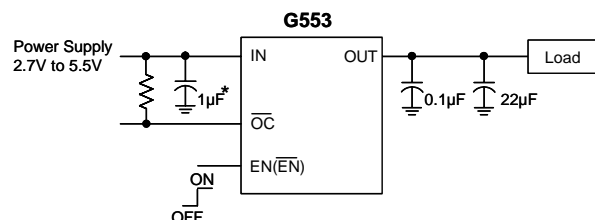
1: Bonding Code

U: Tape & Reel

### Pin Configuration



### Typical Application Circuit



\*: 1μF of input capacitor is enough in most application cases.  
If the PCB trace of power rail to IN is long, larger input capacitor is necessary.