

THE INFORMATION CONTAINED HEREIN IS CONSIDERED "PROPRIETARY" TO BEL FUSE INC. AND SHALL NOT BE COPIED, REPRODUCED OR DISCLOSED WITHOUT THE WRITTEN APPROVAL OF BEL FUSE INC.

LED 2 & 4 POLARITY			LED 1 & 3 POLARITY		
PIN 13	PIN 14	COLOR	PIN 15	PIN 16	COLOR
+	-	GREEN	+	-	YELLOW
-	+	ORANGE			

PRELIMINARY



ELECTRICAL CHARACTERISTICS @ 25°C

URNS RATIO

TP1	1CT : 1CT ±2%
TP2	1CT : 1CT ±2%
TP3	1CT : 1CT ±2%
TP4	1CT : 1CT ±2%

QCL @ 100kHz, 20mVRMS AND 24mA DC BIAS FROM 0°C TO 70°C  
PAIRS (1-2) AND (3-6) 350µH MIN.

QCL @ 100kHz, 20mVRMS AND 8mA DC BIAS FROM 0°C TO 70°C  
PAIRS (4-5) AND (7-8) 350µH MIN.

DCR PINS (11-1), (11-2), (12-3) & (12-6) 0.6 OHMS MAX

DCR IMBALANCE(SAMPLE TEST)

I (VC11-1) - (VC11-2)I and

I (VC12-3) - VC12-6)I

0.03 OHMS MAX

INSERTION LOSS

0.1MHz TO 1MHz	-1.1 dB MAX
1MHz TO 65MHz	-0.5 dB MAX
65MHz TO 100MHz	-0.8 dB MAX
100MHz TO 125MHz	-1.2 dB MAX

RET. LOSS (MIN) @ 100OHMS

0.5MHz-40MHz	-18 dB
50MHz-100MHz	-12+20LOG(f/80MHz) dB

CM TO CM REJ

100kHz - 100MHz	-28 dB MIN
-----------------	------------

CM TO DM REJ

100kHz - 100MHz	-35 dB MIN
-----------------	------------

CROSS TALK

1MHz-100MHz	-30dB MIN
-------------	-----------

HIPOT (Isolation Voltage):

2250 VDC

100% OF PRODUCTION TESTED TO COMPLY WITH IEEE 802.3 ISOLATION REQUIREMENTS

BALANCED DC LINE CURRENT

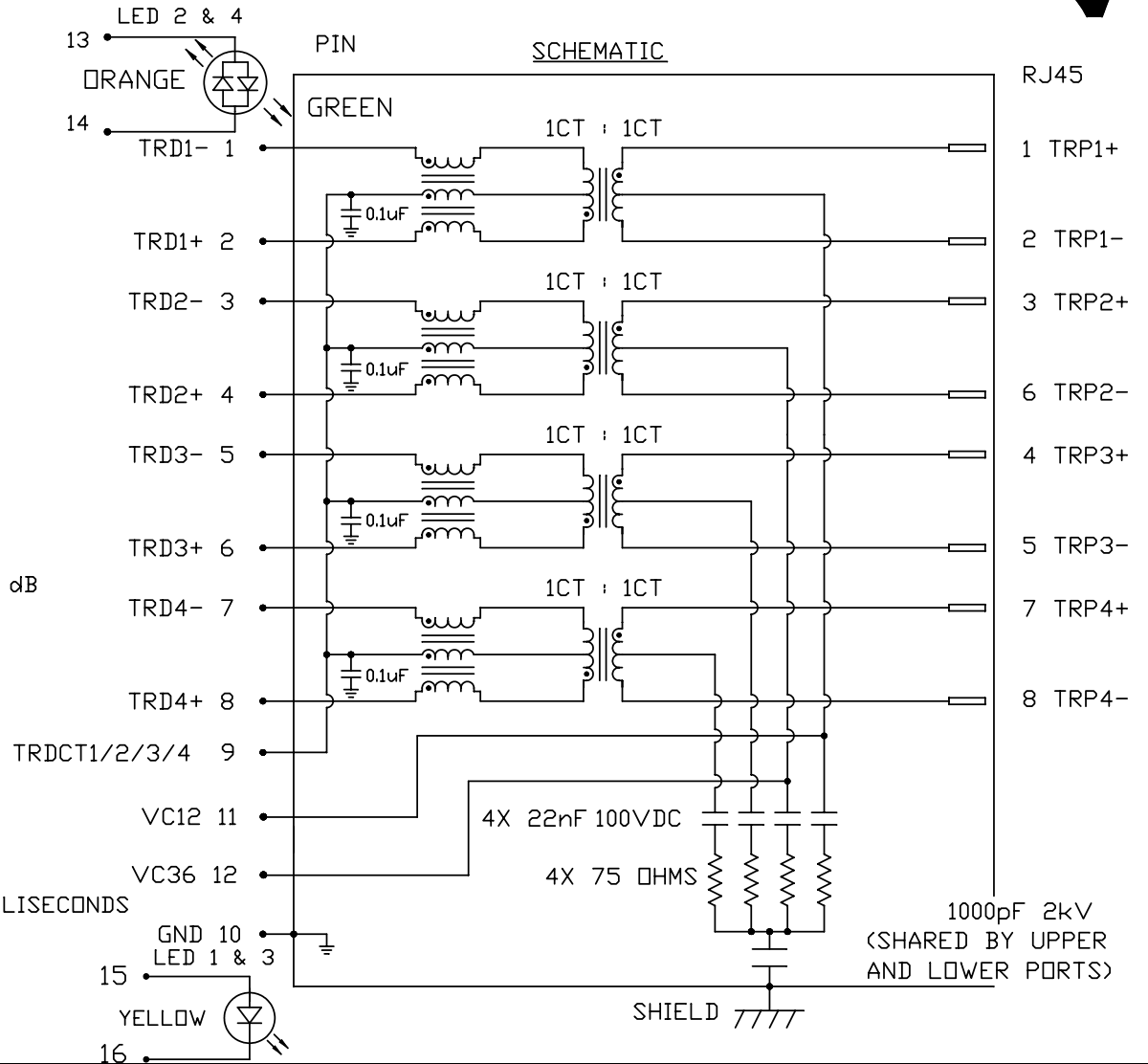
720 mA MAX.  
@ 57 VDC CONTINUOUS  
1.2 A MAX.  
@ 57 VDC for 200 MILLISECONDS

LED 2 & 4

V <sub>F</sub> (FORWARD VOLTAGE)	IF=20mA	GREEN	2.2V TYP.
		ORANGE	2.0V TYP.
λ <sub>D</sub> (DOMINANT WAVELENGTH)	IF=20mA	GREEN	565nm TYP.
		ORANGE	610nm TYP.

LED 1 & 3

V <sub>F</sub> (FORWARD VOLTAGE)	IF=20mA	YELLOW	2.1V TYP.
λ <sub>D</sub> (DOMINANT WAVELENGTH)	IF=20mA	YELLOW	590nm TYP.



ORIGINATED BY	DATE	TITLE
CHOW WANCHUNG	06-02-09	2X6 gigabit MagJack®
DRAWN BY	DATE	PoE+,24mA
WEIDE LEE	06-02-09	PATENTED

PART NO. / DRAWING NO.	STANDARD DIM. TOL. IN INCH	[ ] METRIC DIM. AS REFERENCE
0895-2X6R-BW	.X	UNIT : INCH [mm]
FILE NAME	.XX	SCALE : N/A
0895-2X6R-BW_PB.DWG	.XXX	REV. : PB
		SIZE : A4
		PAGE : 2

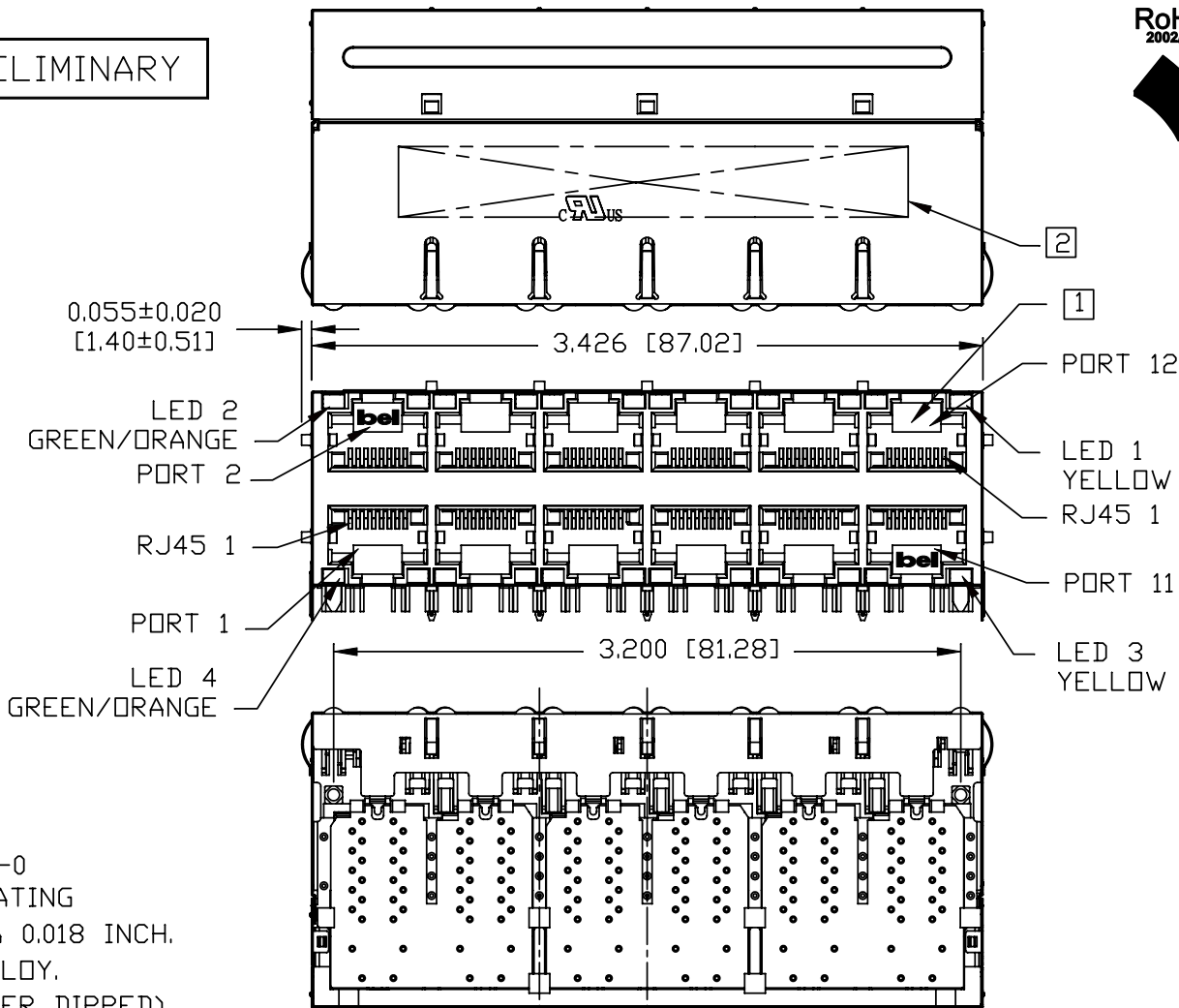
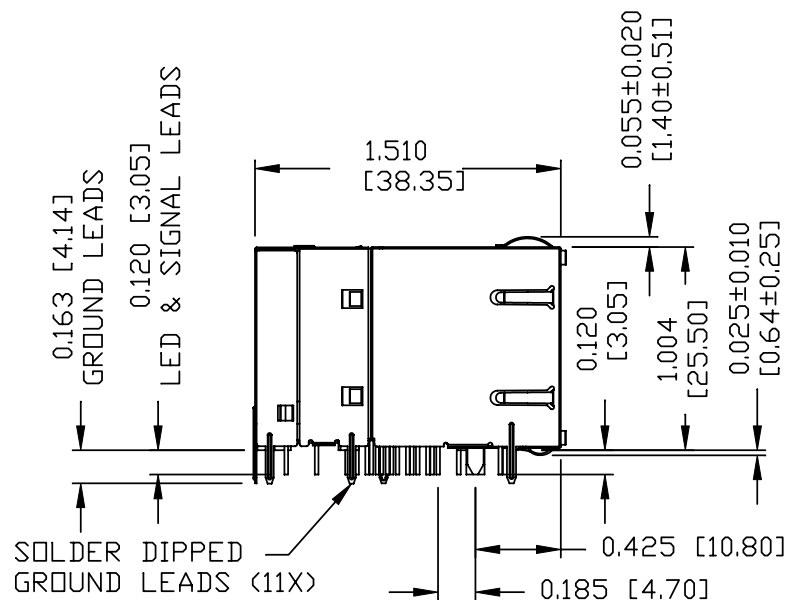
UNIT : INCH [mm]	REV. : PB
SCALE : N/A <td>SIZE : A4 </td>	SIZE : A4
	PAGE : 2

STANDARD DIM. TOL. IN INCH	[ ] METRIC DIM. AS REFERENCE
.X	UNIT : INCH [mm]
.XX	SCALE : N/A
.XXX	REV. : PB
	SIZE : A4
	PAGE : 2



THE INFORMATION CONTAINED HEREIN IS CONSIDERED "PROPRIETARY" TO BEL FUSE INC. AND SHALL NOT BE COPIED, REPRODUCED OR DISCLOSED WITHOUT THE WRITTEN APPROVAL OF BEL FUSE INC.

PRELIMINARY



NOTES:

PLASTIC HOUSING: THERMOPLASTIC PBT  
 FLAMMABILITY RATING UL 94V-0  
 CONTACT PLATING: 50 MICRO-INCH HARD GOLD PLATING  
 OUTPUT PINS: TIN-COATED COPPER WIRE, DIA 0.018 INCH.  
 METAL SHIELD: NICKEL PLATED ON COPPER ALLOY.  
 (ALL GROUND LEADS ARE SOLDER DIPPED)

- 1] JACK CAVITY CONFORMS TO FCC RULES AND REGULATIONS, PART 68 SUBPART F.
- 2] MARK PART WITH MFG LOGO, PART NUMBER, DATE CODE, MFG NAME AND PATENTED.
- 3. RoHS COMPLIANCE, PER EU DIRECTIVE 2002/95/EC.

4. THE PRODUCT IS PATENT PRODUCT. THE PATENT NUMBER IS U.S. PAT. 5,736,910.

UL RECOGNIZED - FILE #E196366 AND E169987.

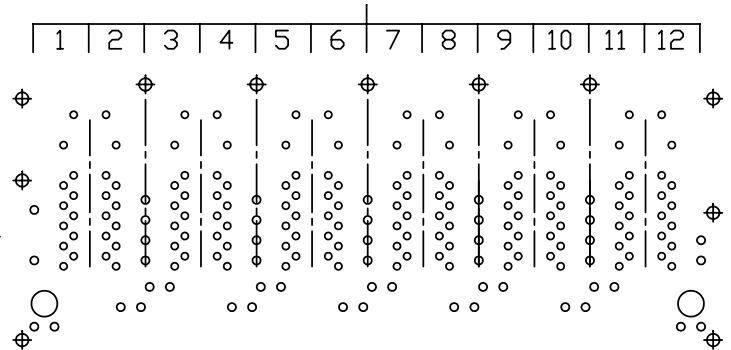
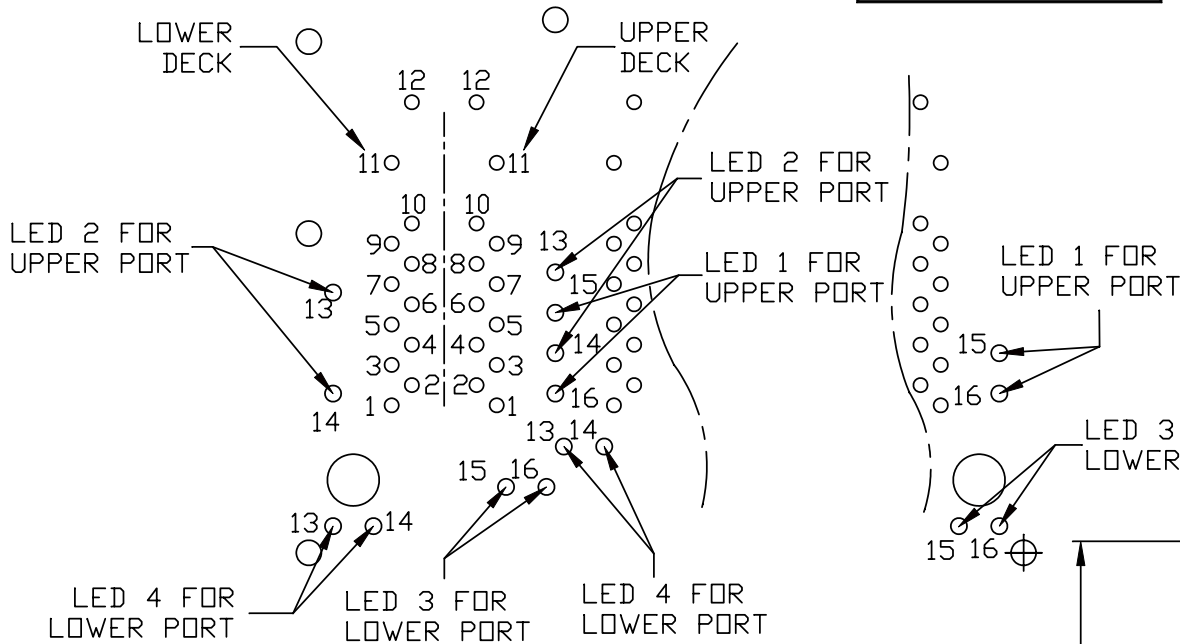
ORIGINATED BY ANTON LIAO	DATE 06-02-09	TITLE 2X6 gigabit MagJack® PoE+, 24mA PATENTED	PART NO. / DRAWING NO. 0895-2X6R-BW	STANDARD DIM. TOL. IN INCH	[ ] METRIC DIM. AS REFERENCE	 COMPONENTS FOR A CONNECTED PLANET
DRAWN BY HOWFAR WEI	DATE 06-02-09		FILE NAME 0895-2X6R-BW_PB.DWG	.X .XX .XXX ±0.010	UNIT : INCH [mm] SCALE : N/A	

THE INFORMATION CONTAINED HEREIN IS CONSIDERED "PROPRIETARY" TO BEL FUSE INC. AND SHALL NOT BE COPIED, REPRODUCED OR DISCLOSED WITHOUT THE WRITTEN APPROVAL OF BEL FUSE INC.

RoHS  
2002/95/EC

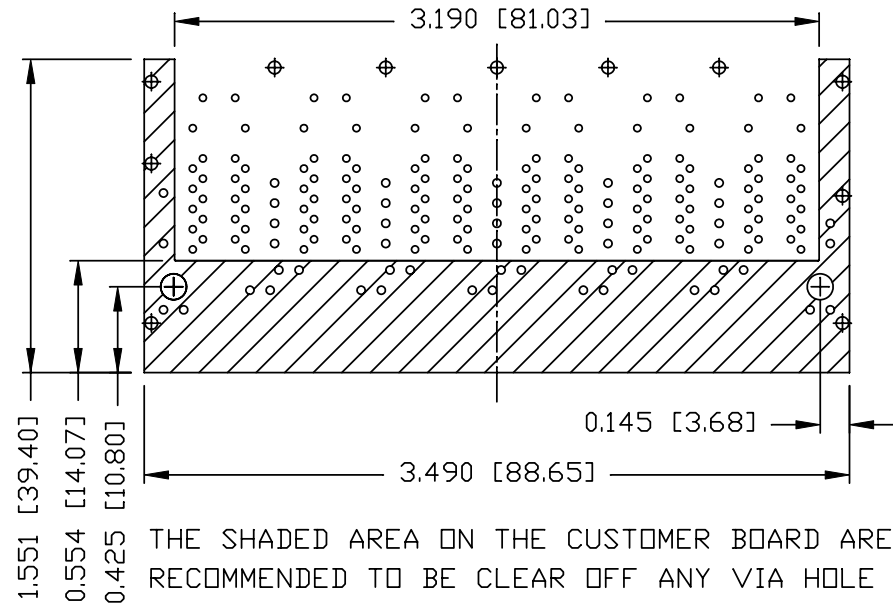
PRELIMINARY

PORT ASSIGNMENT  
(COMPONENT SIDE VIEW)



PIN-OUT INFORMATION  
(COMPONENT SIDE VIEW)

12	VC36		
11	VC12		
10	GND		
9	TRDCT1/2/3/4		
8	TRD 4+		
7	TRD 4-		
6	TRD 3+		
5	TRD 3-		
4	TRD 2+	16	YELLOW (-)
3	TRD 2-	15	YELLOW (+)
2	TRD 1+	14	ORA(+) GRE(-)
1	TRD 1-	13	ORA(-) GRE(+)



THE SHADED AREA ON THE CUSTOMER BOARD ARE RECOMMENDED TO BE CLEAR OFF ANY VIA HOLE OR COMPONENT PAD.

ORIGINATED BY ANTON LIAO	DATE 06-02-09
DRAWN BY HOWFAR WEI	DATE 06-02-09

TITLE  
2X6 gigabit MagJack®  
PoE+,24mA  
PATENTED

PART NO. / DRAWING NO. 0895-2X6R-BW
FILE NAME 0895-2X6R-BW_PB.DWG

STANDARD DIM. TOL. IN INCH	
.X	
.XX	
.XXX	±0.004

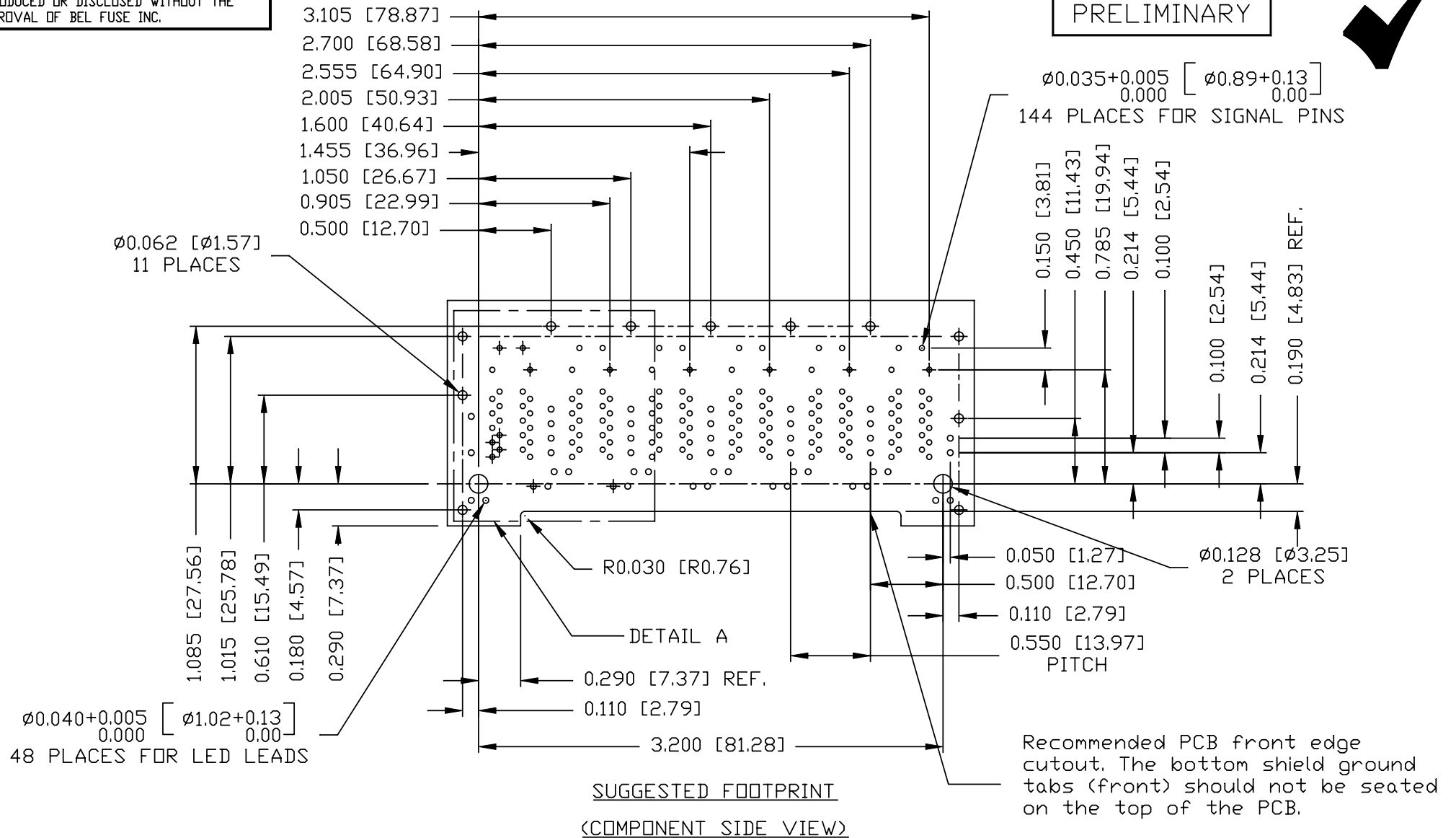
[ ] METRIC DIM. AS REFERENCE	
UNIT : INCH [mm]	REV. : PB
SCALE : N/A	SIZE : A4
	PAGE : 4

**bel**  
COMPONENTS FOR A  
CONNECTED  
PLANET

THE INFORMATION CONTAINED HEREIN IS CONSIDERED "PROPRIETARY" TO BEL FUSE INC. AND SHALL NOT BE COPIED, REPRODUCED OR DISCLOSED WITHOUT THE WRITTEN APPROVAL OF BEL FUSE INC.

RoHS  
2002/95/EC

PRELIMINARY

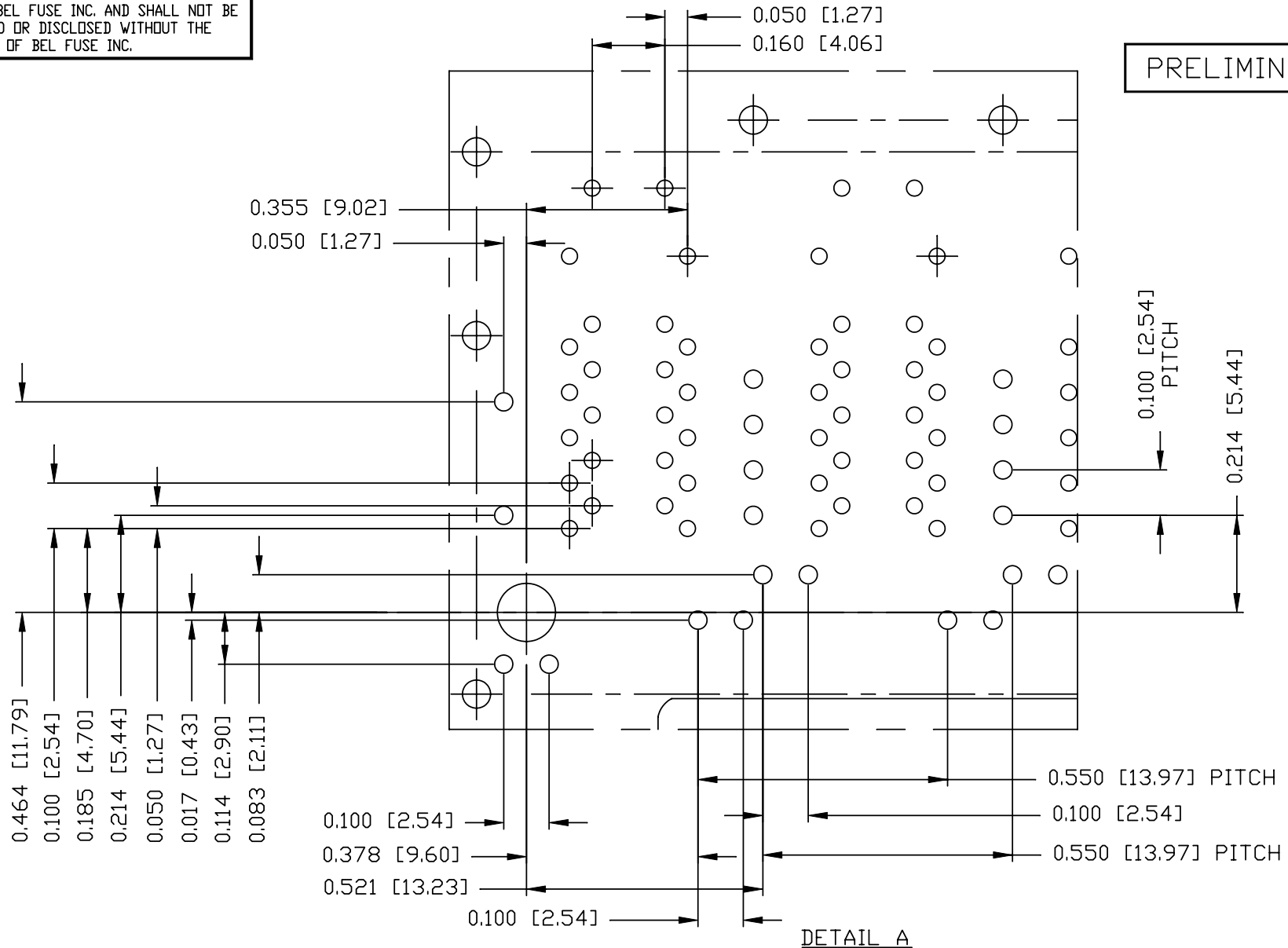


ORIGINATED BY ANTON LIAO	DATE 06-02-09	TITLE 2X6 gigabit MagJack® PoE+,24mA PATENTED	PART NO. / DRAWING NO. 0895-2X6R-BW	STANDARD DIM. TOL. IN INCH .X .XX .XXX ±0.004	[ ] METRIC DIM. AS REFERENCE UNIT : INCH [mm] SCALE : N/A	REV. : PB SIZE : A4 PAGE : 5	 COMPONENTS FOR A CONNECTED PLANET
DRAWN BY HOWFAR WEI	DATE 06-02-09	FILE NAME 0895-2X6R-BW_PB.DWG					

THE INFORMATION CONTAINED HEREIN IS CONSIDERED "PROPRIETARY" TO BEL FUSE INC. AND SHALL NOT BE COPIED, REPRODUCED OR DISCLOSED WITHOUT THE WRITTEN APPROVAL OF BEL FUSE INC.



PRELIMINARY



DETAIL A

ORIGINATED BY	DATE	TITLE 2X6 gigabit MagJack® PoE+,24mA PATENTED	PART NO. / DRAWING NO.	STANDARD DIM.	[ ] METRIC DIM. AS REFERENCE	
ANTON LIAO	06-02-09		0895-2X6R-BW	TOL. IN INCH	UNIT : INCH [mm]	REV. : PB
DRAWN BY	DATE		FILE NAME	.X	SCALE : N/A	SIZE : A4
HOWFAR WEI	06-02-09		0895-2X6R-BW_PB.DWG	.XX	±0.004	PAGE : 6
				.XXX		

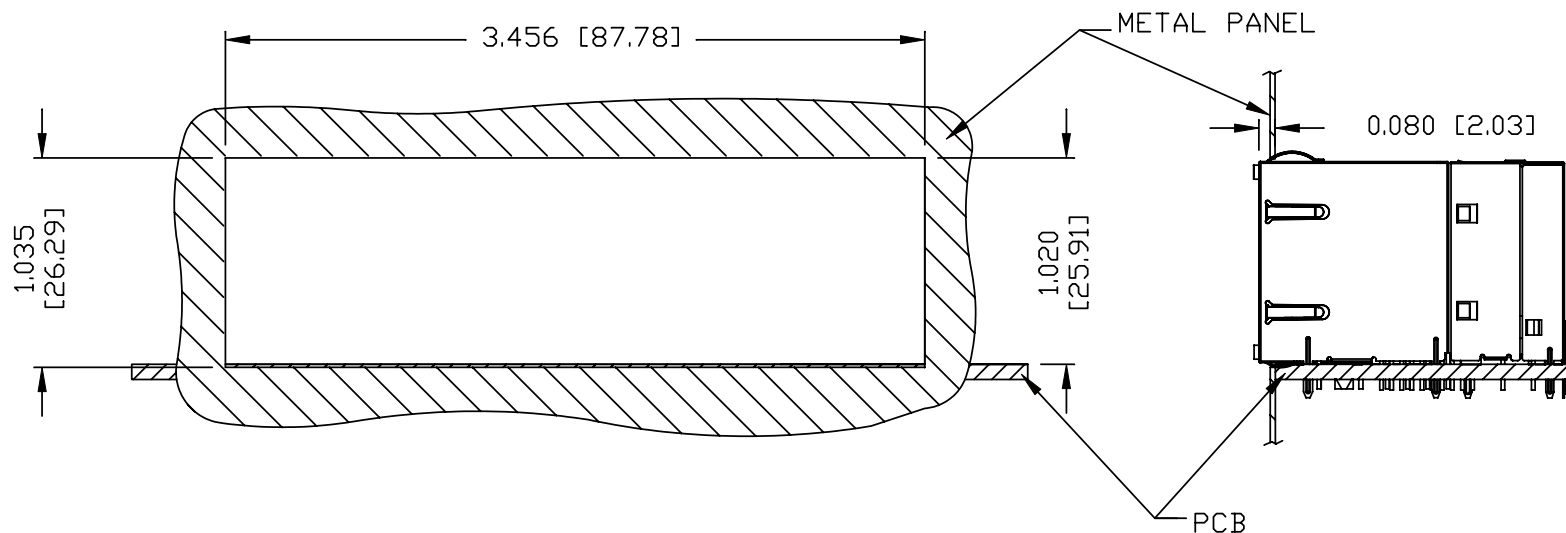


THE INFORMATION CONTAINED HEREIN IS CONSIDERED "PROPRIETARY" TO BEL FUSE INC. AND SHALL NOT BE COPIED, REPRODUCED OR DISCLOSED WITHOUT THE WRITTEN APPROVAL OF BEL FUSE INC.

PRELIMINARY



SUGGESTED PANEL OPENING



NOTE:

THE DISTANCE OF PANEL INSIDE SURFACE RELATIVE TO FRONT SURFACE OF PART IS ONLY A SUGGESTION. IN CASE THIS DISTANCE IS DIFFERENT, THE REQUIRED PANEL OPENING DIMENSIONS CHANGE ACCORDINGLY.

PACKING INFORMATION

PACKING TRAY : 0200-9999-B7 (TOP)

0200-9999-B8 (BOTTOM)

PACKING QUANTITY : 15 PCS FINISHED GOODS PER TRAY.

5 TRAYS (75 PCS FINISHED GOODS) PER CARTON BOX.

NOTE : CARDBOARDS ARE PLACED BETWEEN LAYERS OF PACKING TRAY INSIDE CARTON BOX.

(INCLUDE THE UPPERMOST AND LOWERMOST TRAY)

ORIGINATED BY ANTON LIAO	DATE 06-02-09	TITLE 2X6 gigabit MagJack® PoE+,24mA PATENTED	PART NO. / DRAWING NO. 0895-2X6R-BW	STANDARD DIM. TOL. IN INCH		[ ] METRIC DIM. AS REFERENCE		bel COMPONENTS FOR A CONNECTED PLANET
	DRAWN BY HOWFAR WEI			DATE 06-02-09	FILE NAME 0895-2X6R-BW_PB.DWG	.X .XX .XXX	±0.004	