

Compensated High Inductance Choke, 3-phase



Description

- Current compensated choke
- 3-phase choke
- Flexible wire
- Flange for mounting onto printed circuit board
- Fully potted resin

Standards

- EN 60938
- UL 1283
- CSA 22.2 no 8

Applications

- Placed in front of frequency converter
- Stepper motor drives
- UPS-systems
- Inverter

Weblinks

[pdf-datasheet](#), [html-datasheet](#), [General Product Information](#), [Approvals](#), [RoHS](#), [CHINA-RoHS](#), [e-Shop](#), [SCHURTER-Stock-Check](#), [Distributor-Stock-Check](#), [Detailed request for product](#)

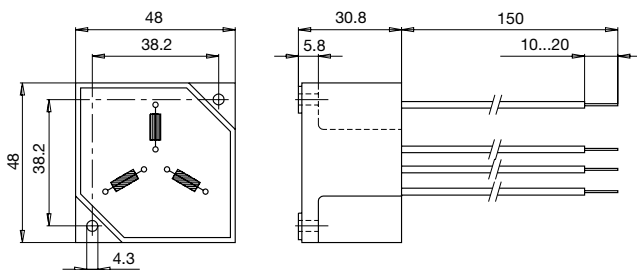
Technical Data

Rated voltage	up to 540 VAC
Rated voltage	up to 760 VDC
Rated Current	3 - 16 A @ Ta 40 °C
Rated inductance	4.0 - 50 mH, Tol. -30% +50%
Power Operating Frequency	50 - 400 Hz
Terminal technic	Flexible wire
Weight	145 - 1840 g
Material: Housing	UL 94V-0
Sealing Compound	UL 94V-0

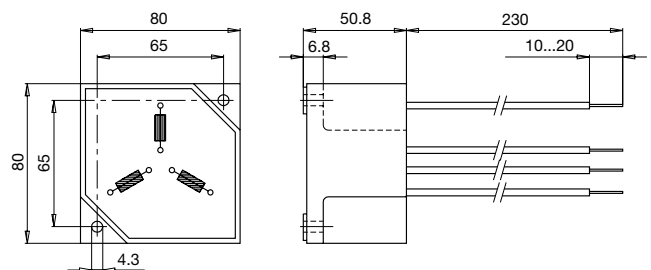
Test Voltage	2.5 kV, 50 Hz, 2 sec, winding to winding
Isolation Voltage	2.5 kV eff., 50 Hz, 2 sec, winding to ambient
Climatic Category	25/100/21 acc. to IEC 60068-1
Allowable Operation Temp.	-25 °C to 100 °C

Dimensions

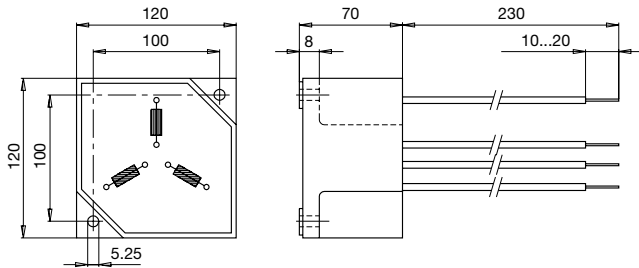
Case 29-3W



Case 31-3W

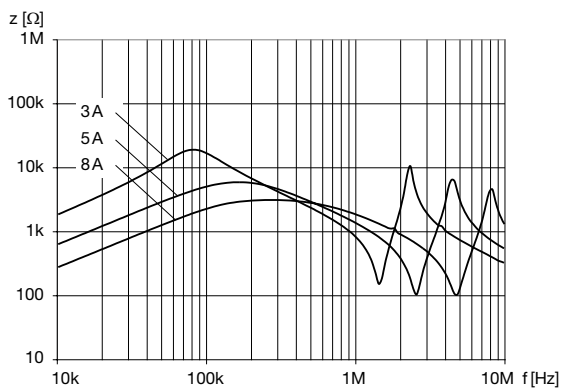


Case 33-3W

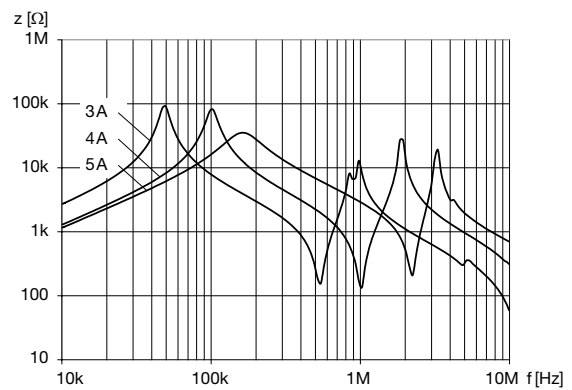


Impedance curves

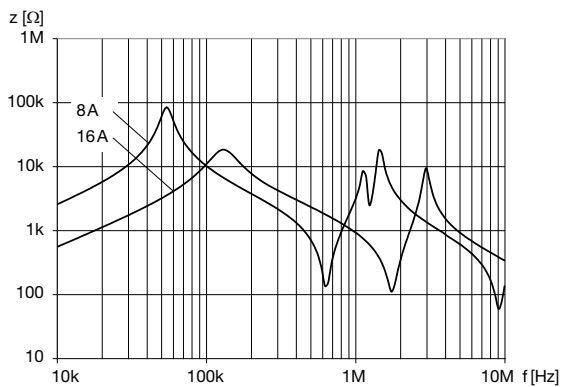
DKLP-0329-xxxx



DKLP-0331-xxxx



DKLP-0333-xxxx



Variants

I_n [A]	L_n [mH]	R_{cu} [mΩ]	Tripped Power Dissipation [W]	f_{RES} [MHz]	Copper ϕ [mm]	Weight [g]	Housing	Packing unit [pcs.]	Order Number
3	30	130	3.5	0.13	0.71	145	29-3W	12	DKLP-0329-0330
5	10	48	3.6	0.15	0.9	145	29-3W	12	DKLP-0329-0510
8	4	22	4.2	0.4	1.12	145	29-3W	12	DKLP-0329-0804
3	50	260	7	0.055	0.71	509	31-3W	2	DKLP-0331-0350
4	30	155	7.5	0.075	0.8	512	31-3W	2	DKLP-0331-0430
5	20	100	7.5	0.145	0.9	514	31-3W	2	DKLP-0331-0520
8	40	110	21	0.05	1.12	1726	33-3W	1	DKLP-0333-0840
16	10	30	23	0.14	1.6	1840	33-3W	1	DKLP-0333-1610

