

PRELIMINARY SPEC

Part Number: BLW652SEC-H-16V-T6.5

Hyper Orange

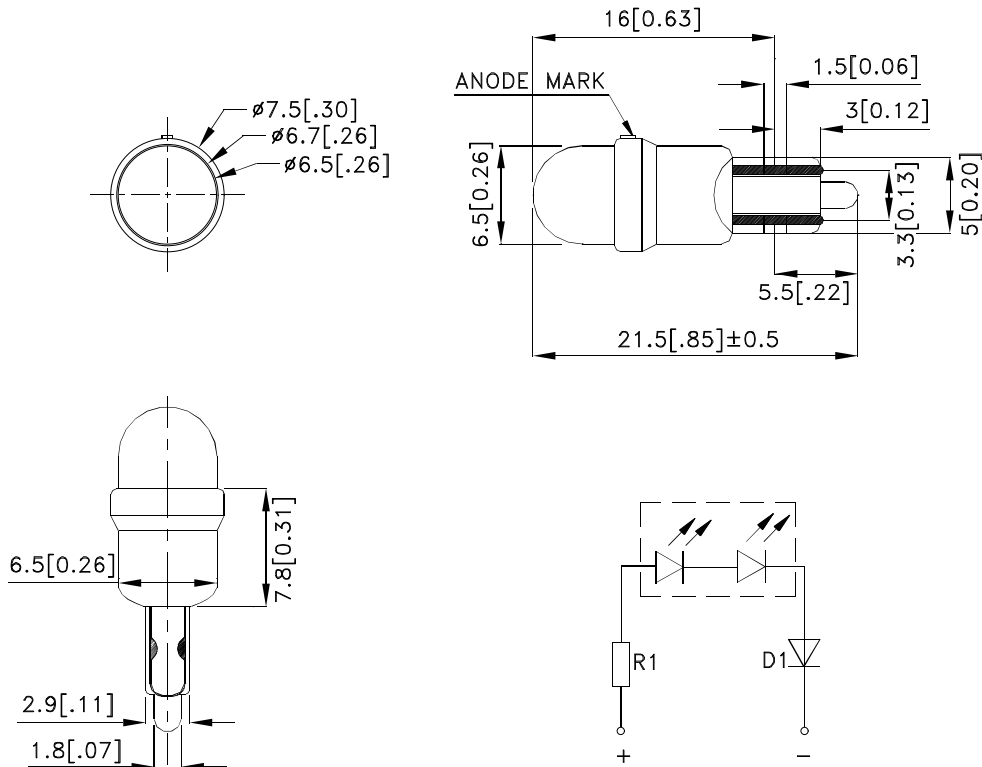
Features

- Built-in current limiting resistor for direct application of different across voltage.
- Long life.
- Low current, power savings.
- Low maintenance.
- Resistant to shock and vibration.
- RoHS compliant.

Description

This devices are made with TS InGaAlP.

Package Dimensions



Notes:

1. All dimensions are in millimeters (inches).
2. Tolerance is $\pm 0.25 (0.01)$ unless otherwise noted.
3. Specifications are subject to change without notice.



Selection Guide

Part No.	Dice	Lens Type	Luminous Intensity (typ.) mcd				Viewing Angle
			10V	12V	14V	16V	2θ1/2
BLW652SEC-H-16V-T6.5	Hyper Orange (InGaAlP)	WATER CLEAR	1441	1742	1952	3003	70°

Note:

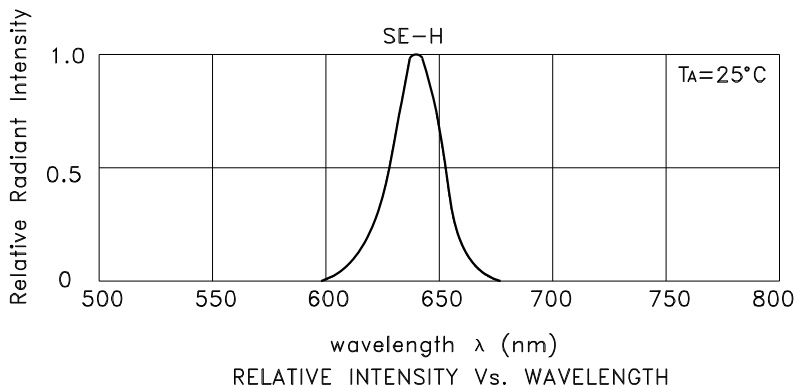
1. θ1/2 is the angle from optical centerline where the luminous intensity is 1/2 the optical centerline value.

Electrical / Optical Characteristics at T_A=25°C

Symbol	Parameter	Device	Typ.	Max.	Units	Test Conditions
λ _{peak}	Peak Wavelength	Hyper Orange	640	-	nm	V _F =16V DC
λ _D	Dominant Wavelength	Hyper Orange	630	-	nm	V _F =16V DC
Δλ _{1/2}	Spectral Line Half-width	Hyper Orange	25	-	nm	V _F =16V DC
I _F	Forward Current	Hyper Orange	24	-	mA	V _F =16V DC

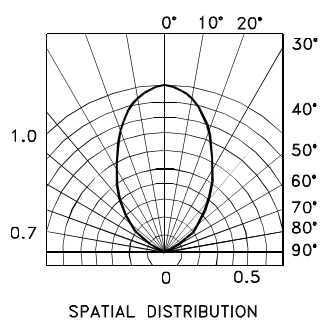
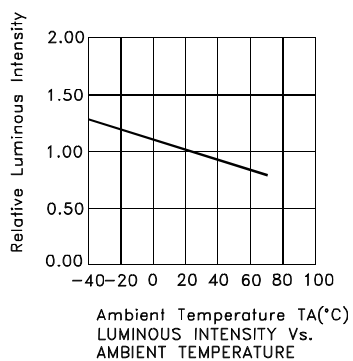
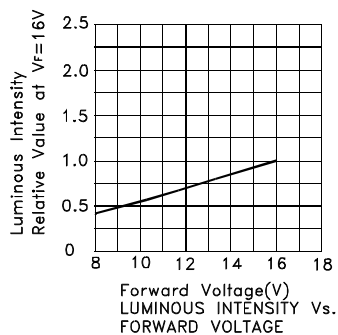
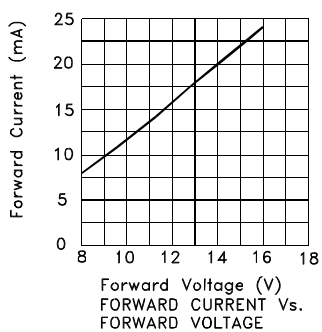
Absolute Maximum Ratings at T_A=25°C

Parameter	Hyper Orange	Units
Power dissipation	380	mW
Forward Voltage	16	V
Operating Temperature	-40°C To +70°C	
Storage Temperature	-40°C To +85°C	



Hyper Orange

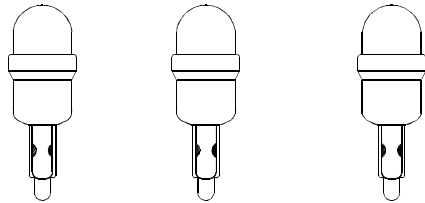
BLW652SEC-H-16V-T6.5



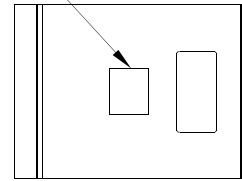
Kingbright

PACKING & LABEL SPECIFICATIONS

BLW652SEC-H-16V-T6.5



LABEL



100 PCS / BAG

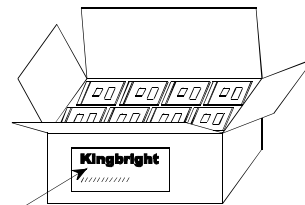


10K/9# BOX

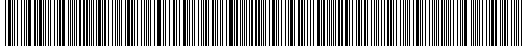
OUTSIDE LABEL



OUTSIDE LABEL



5K/5# BOX

<h1>Kingbright</h1>	
P/NO:BLW652xxx	
QTY: 100 pcs	Q.C. Q C XX XX XXXX PASSED
S/N: XXXX	
CODE: XXX	
LOT NO:	
 <small>xxxxxxxxxxxxxxxxxxxxxxxxxxxx</small>	
RoHS Compliant	