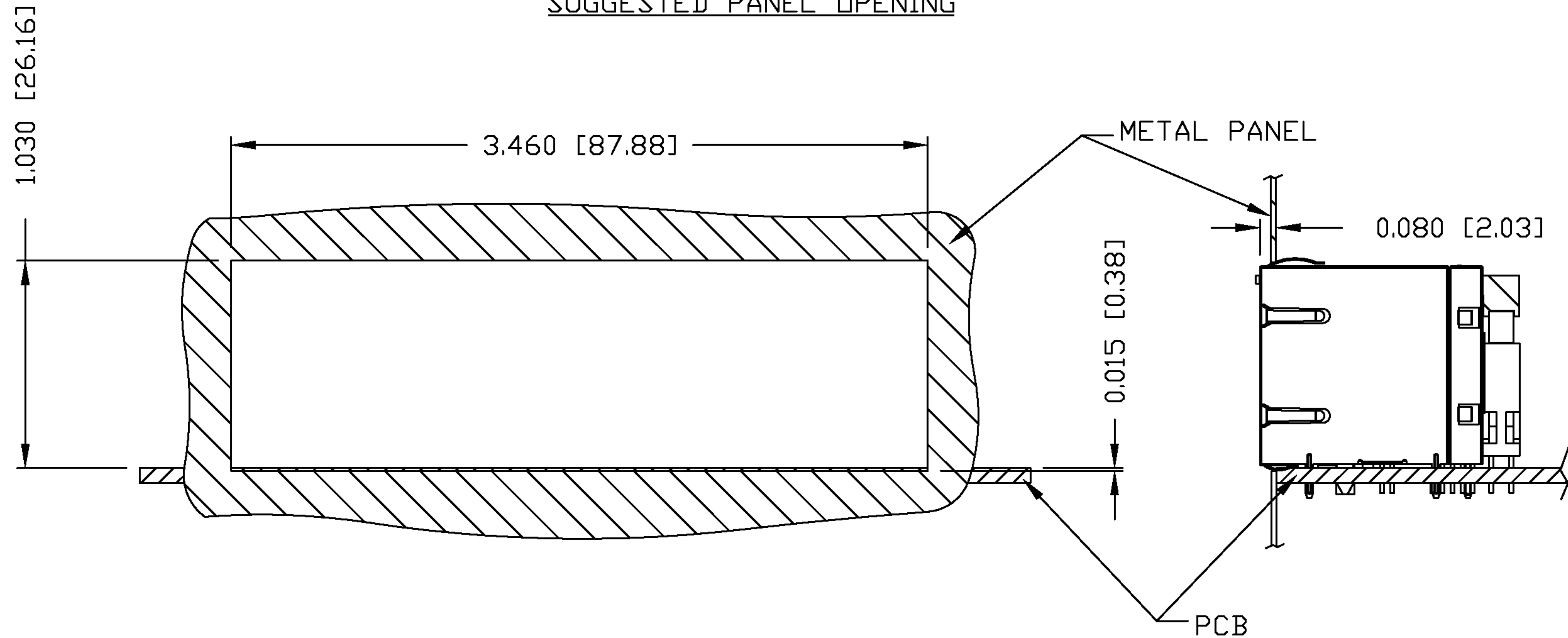


THE INFORMATION CONTAINED HEREIN IS CONSIDERED "PROPRIETARY" TO BEL FUSE INC. AND SHALL NOT BE COPIED, REPRODUCED OR DISCLOSED WITHOUT THE WRITTEN APPROVAL OF BEL FUSE INC.

RoHS  
2002/95/EC



SUGGESTED PANEL OPENING



NOTE:

THE DISTANCE OF PANEL INSIDE SURFACE RELATIVE TO FRONT SURFACE OF PART IS ONLY A SUGGESTION. IN CASE THIS DISTANCE IS DIFFERENT, THE REQUIRED PANEL OPENING DIMENSIONS CHANGE ACCORDINGLY.

PACKING INFORMATION

PACKING TRAY : 0200-9999-E1 (TOP)

0200-9999-F5 (BOTTOM)

PACKING QUANTITY : 15 PCS FINISHED GOODS PER TRAY

6 TRAYS (90 PCS FINISHED GOODS) PER CARTON BOX

NOTE : CARDBOARDS ARE PLACED BETWEEN LAYERS OF PACKING TRAY INSIDE CARTON BOX (INCLUDE THE UPPERMOST AND LOWERMOST TRAY)

ORIGINATED BY QIN	DATE 03-04-06	TITLE 2X6 10/100 MagJack® VOIP/POE W/LED 0864-2X6R-55-F	PART NO. / DRAWING NO. 08642X6R55-F		STANDARD DIM. TOL. IN INCH		[ ] METRIC DIM. AS REFERENCE	
	DRAWN BY TING		DATE 03-04-06	FILE NAME 08642X6R55-FA.DWG	.X .XX .XXX	±0.004	UNIT : INCH [mm] SCALE : N/A	REV. : A SIZE : A4 PAGE : 6



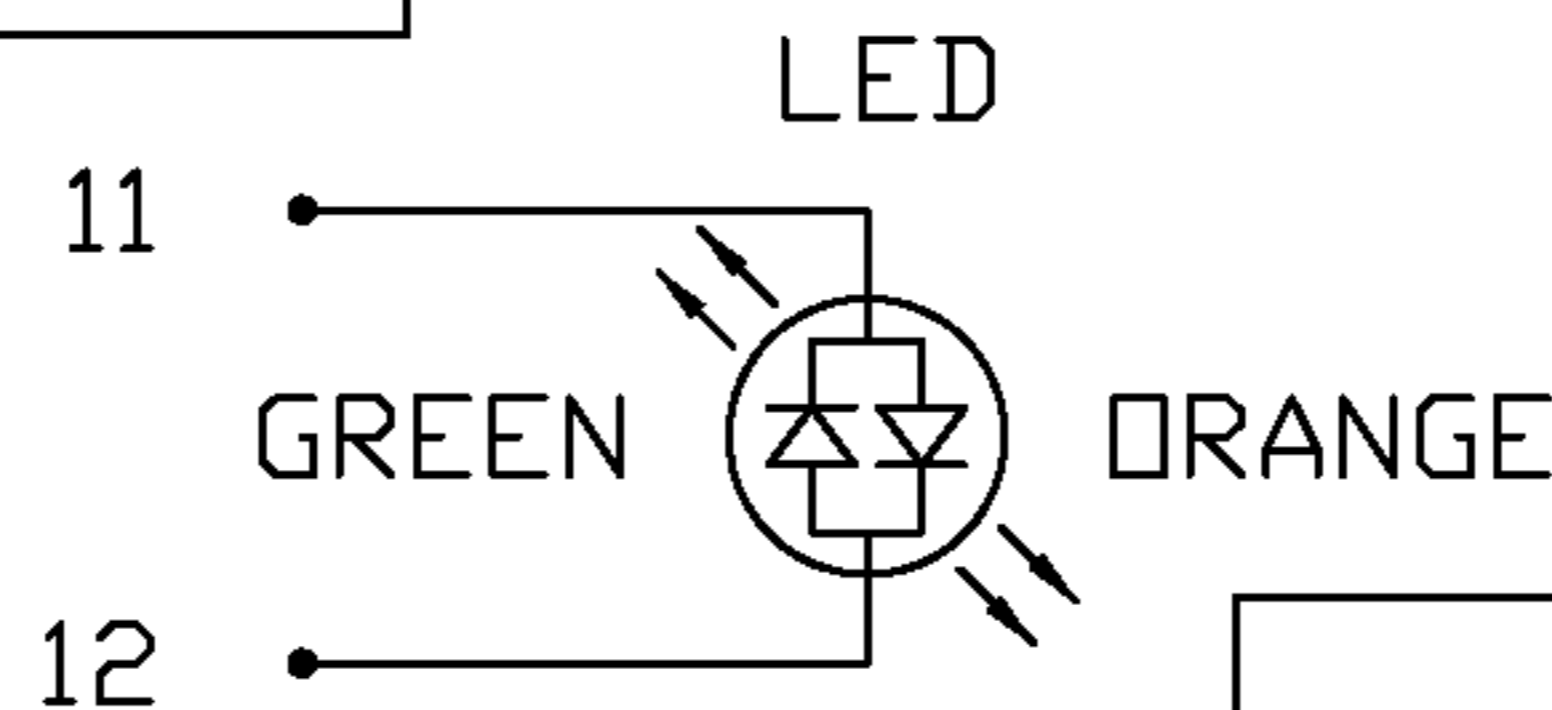
THE INFORMATION CONTAINED HEREIN IS CONSIDERED 'PROPRIETARY' TO BEL FUSE INC. AND SHALL NOT BE COPIED, REPRODUCED OR DISCLOSED WITHOUT THE WRITTEN APPROVAL OF BEL FUSE INC.



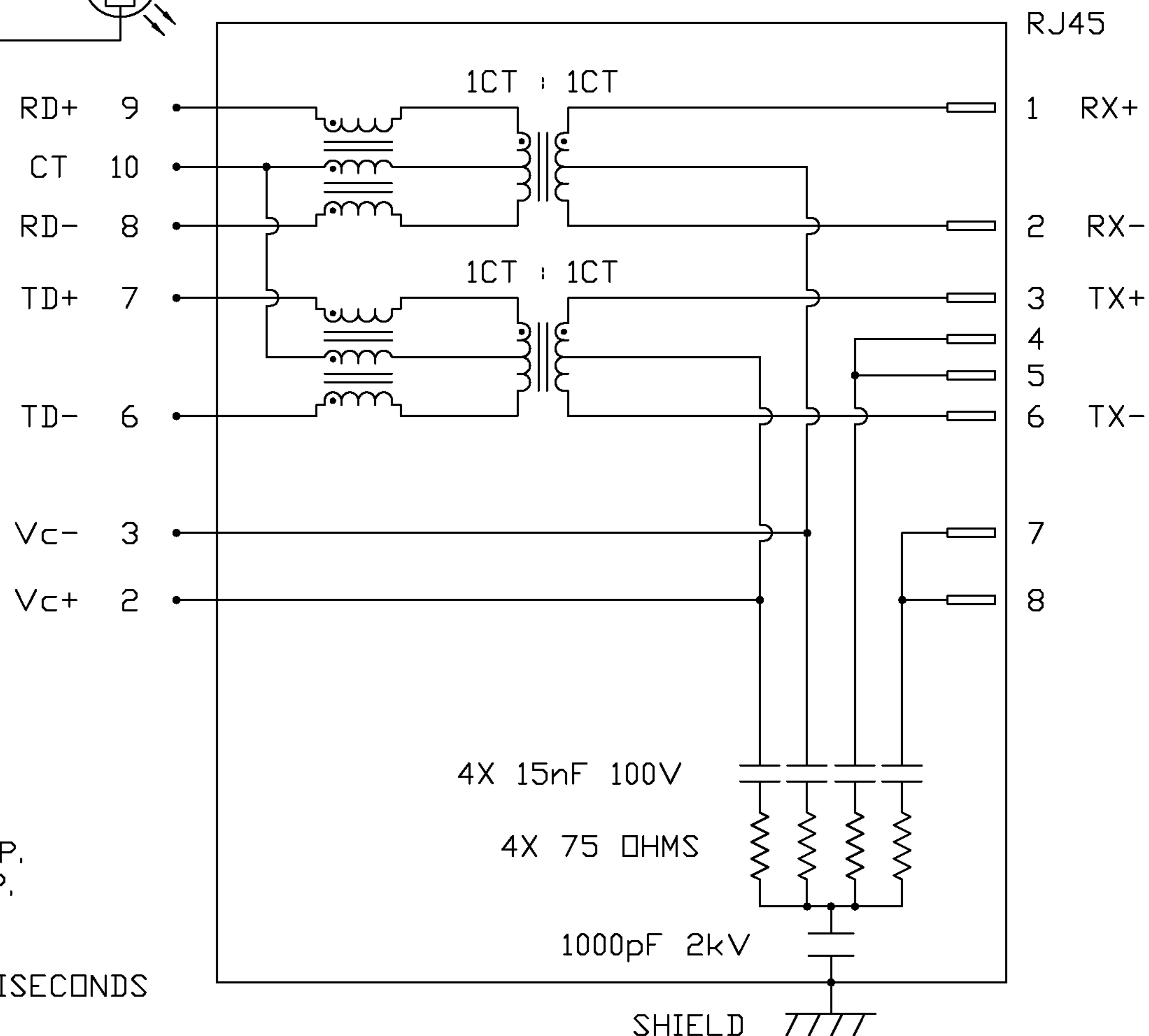
LED POLARITY		
PIN 11	PIN 12	COLOR
-	+	GREEN
+	-	ORANGE

ELECTRICAL CHARACTERISTICS @ 25°C

<p> <b>URNS RATIO</b>            □CL @ 0.1V, 100KHz            8mA DC BIAS  <b>INSERTION LOSS</b>            100KHz TO 100MHz  <b>RETURN LOSS (MIN.)</b>            2MHz-30MHz            60MHz-80MHz  <b>LEAKAGE INDUCTANCE</b>            PRIMARY W/ SECONDARY SHORTED  <b>D.C. RESISTANCE</b>            (9-8)=(7-6)            (RJ1-RJ2)=(RJ3-RJ6)  <b>INTERWINDING CAPACITANCE</b>            PER CHANNEL (PRI. to SEC.)  <b>CROSSTALK</b>            100KHz TO 100MHz  <b>HIPOT (Isolation Voltage):</b>            100% OF PRODUCT TESTED IN PRODUCTION  <b>LED</b>            VF (FORWARD VOLTAGE)            λD (DOMINANT WAVELENGTH)  <b>BALANCED DC LINE CURRENT</b> </p>	<p>           1CT : 1CT ±2%            350µH MIN.            -1.5 dB MAX.            -16 dB MIN.            -10 dB MIN.            0.25µH MAX. @ 1MHz            1.40 ΩHM MAX.            1.0 ΩHM MAX.            40 pF MAX.            -30 dB MIN.            2250 VDC            IF=20mA GREEN 2.2V TYP.            IF=20mA ORANGE 2.0V TYP.            IF=20mA GREEN 565nm TYP.            IF=20mA ORANGE 610nm TYP.            350 mA MAX. @ 57 VDC CONTINUOUS            500 mA MAX. @ 57 VDC FOR 200 MILLISECONDS         </p>
--	--



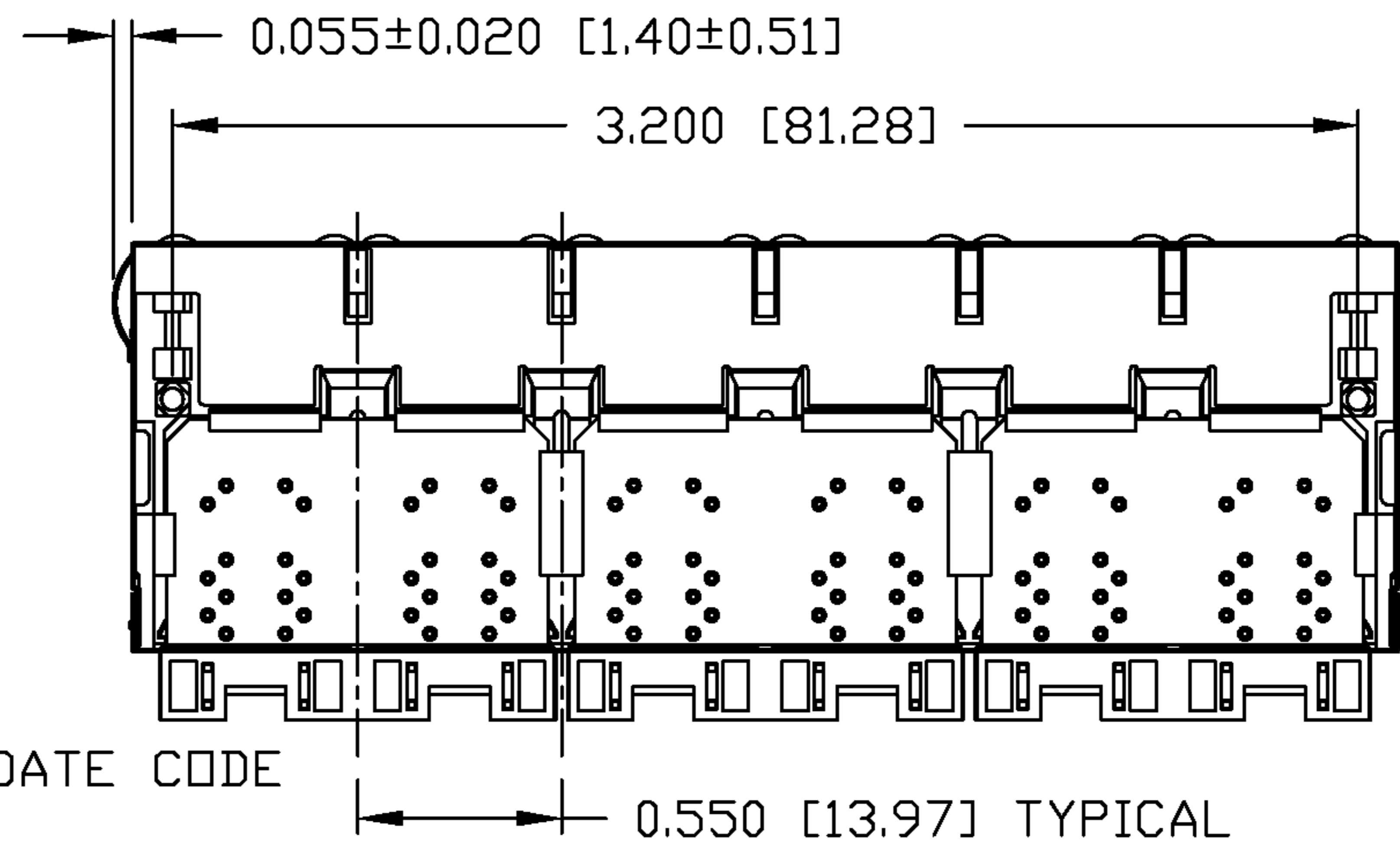
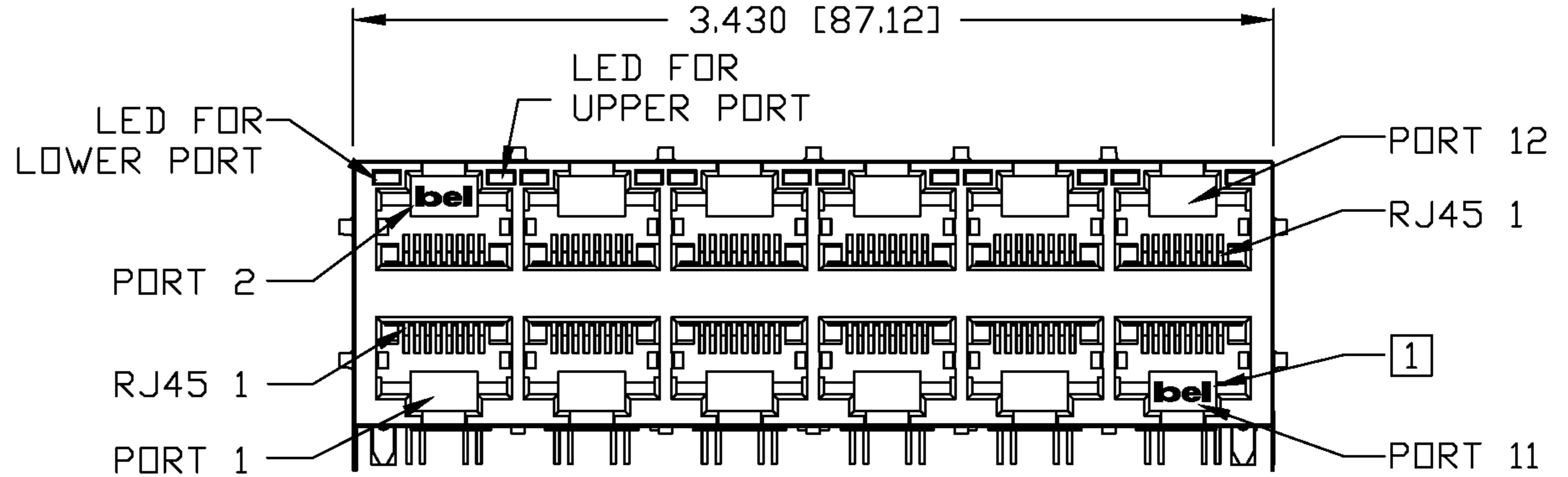
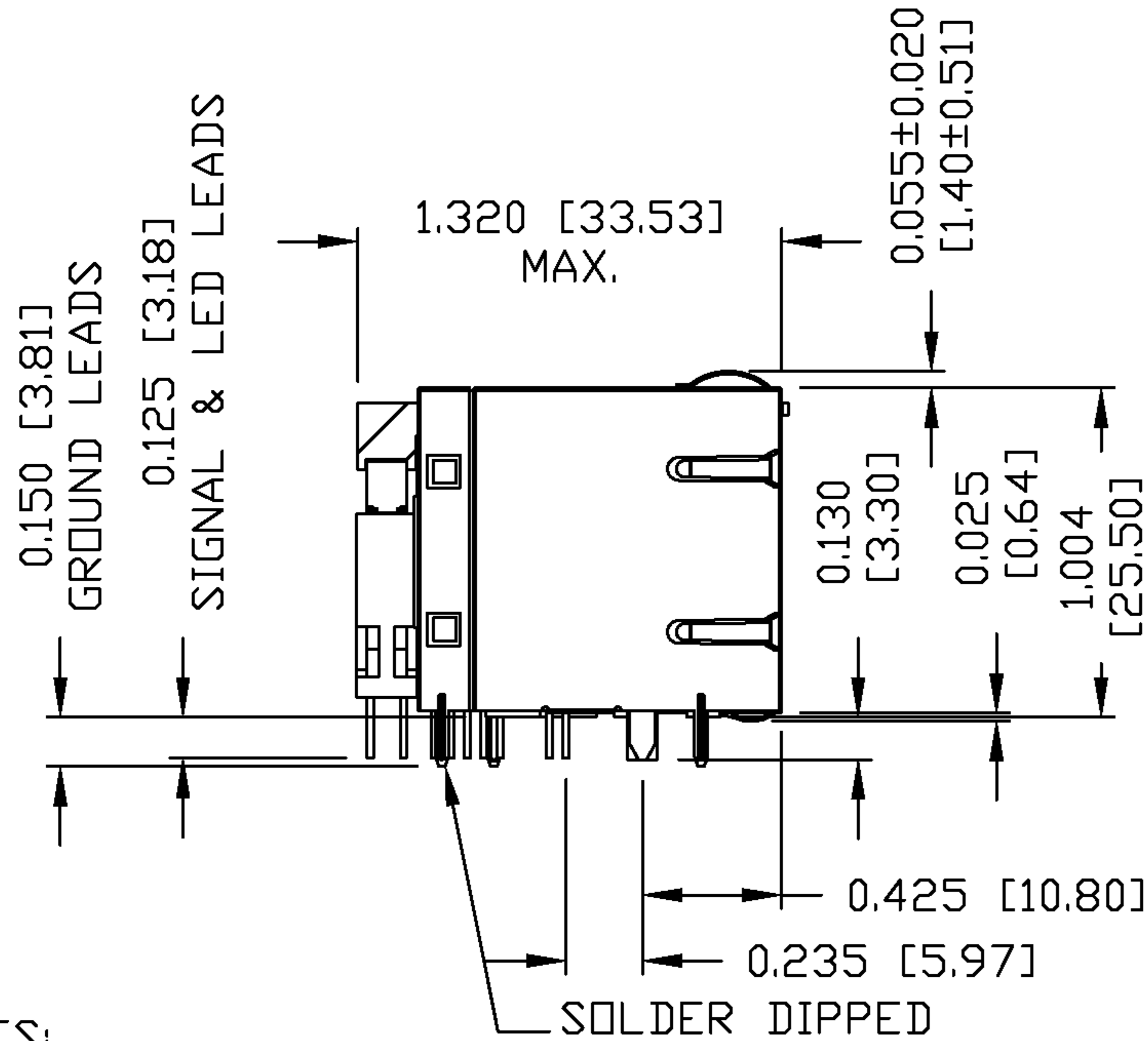
SCHEMATIC



<b>ORIGINATED BY</b> CHUNG	<b>DATE</b> 03-04-06	<b>TITLE</b> 2X6 10/100 MagJack® VOIP/PoE W/LED	<b>PART NO. / DRAWING NO.</b> 08642X6R55-F	<b>STANDARD DIM. TOL. IN INCH</b>		<b>[ ] METRIC DIM. AS REFERENCE</b>		<b>COMPONENTS FOR A CONNECTED PLANET</b>
<b>DRAWN BY</b> DE	<b>DATE</b> 03-04-06			<b>FILE NAME</b> 08642X6R55-FA.DWG	.X		UNIT : INCH [mm]	
			.XX		SCALE : N/A	SIZE : A4		
			.XXX			PAGE : 2		

THE INFORMATION CONTAINED HEREIN IS CONSIDERED "PROPRIETARY" TO BEL FUSE INC. AND SHALL NOT BE COPIED, REPRODUCED OR DISCLOSED WITHOUT THE WRITTEN APPROVAL OF BEL FUSE INC.

RoHS  
2002/95/EC



**NOTES:**

- PLASTIC HOUSING: THERMOPLASTIC PBT  
FLAMMABILITY RATING UL 94V-0
- CONTACT PLATING: 50 MICRO-INCH HARD GOLD PLATING
- OUTPUT PINS: TIN-COATED COPPER WIRE, DIA 0.018 INCH.
- METAL SHIELD: NICKEL PLATED ON COPPER ALLOY.  
(ALL GROUND LEADS ARE SOLDER DIPPED)

- [1] JACK CAVITY CONFORMS TO FCC RULES AND REGULATIONS, PART 68 SUBPART F.
- [2] MARK PART WITH MFG LOGO MFG, NAME, PART NUMBER, AND DATE CODE

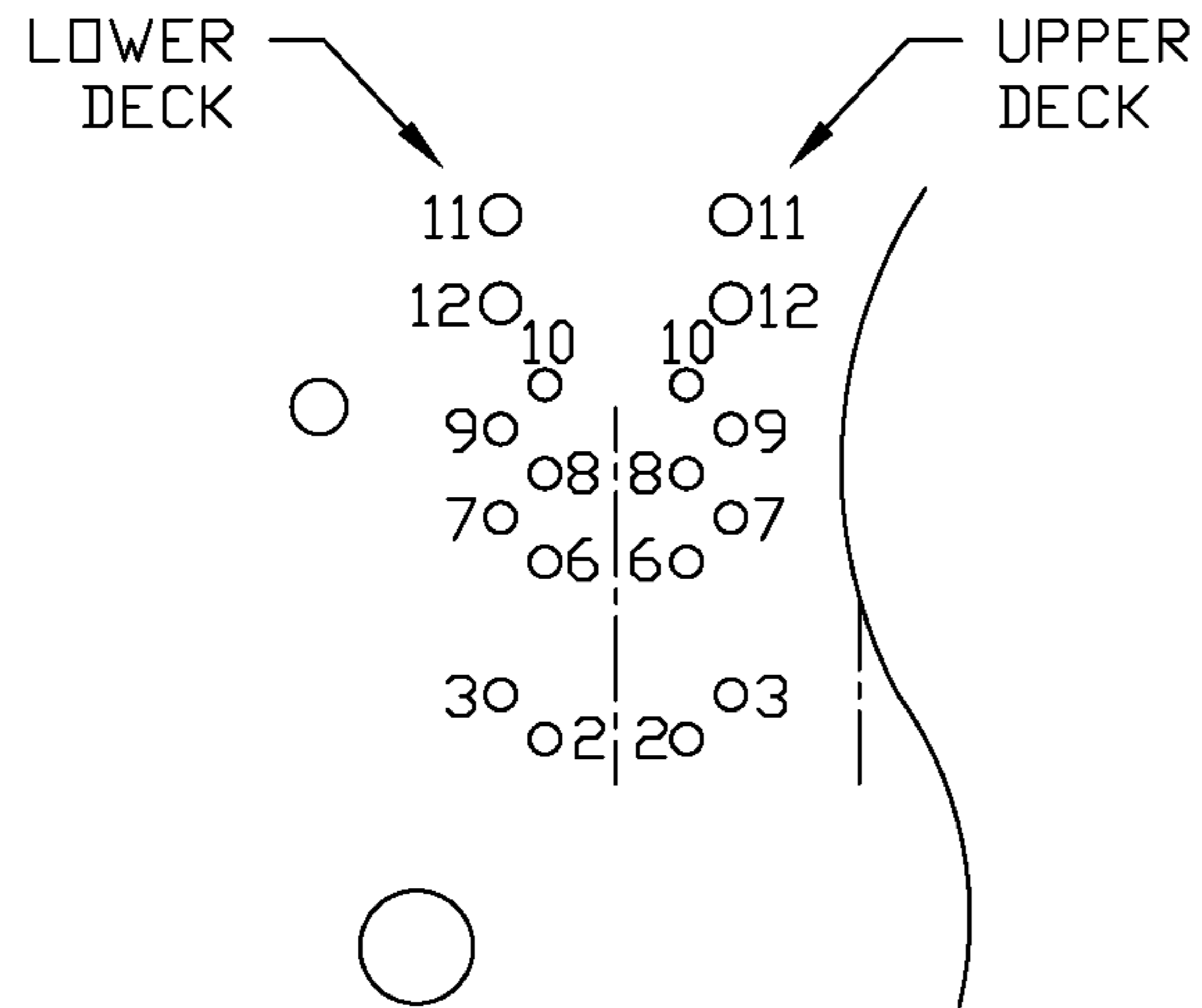
**c us** UL RECOGNIZED - FILE #E196366 AND E169987.  
RoHS COMPLIANCE, PER EU DIRECTIVE 2002/95/EC.

ORIGINATED BY QIN	DATE 03-04-06	TITLE 2X6 10/100 MagJack® VOIP/POE W/LED 0864-2X6R-55-F	PART NO. / DRAWING NO. 08642X6R55-F		STANDARD DIM. TOL. IN INCH		[ ] METRIC DIM. AS REFERENCE	
			FILE NAME 08642X6R55-FA.DWG		.X		UNIT : INCH [mm]	REV. : A
DRAWN BY TING	DATE 03-04-06				.XX		SCALE : N/A	SIZE : A4
					.XXX	±0.010		PAGE : 3



THE INFORMATION CONTAINED HEREIN IS CONSIDERED "PROPRIETARY" TO BEL FUSE INC. AND SHALL NOT BE COPIED, REPRODUCED OR DISCLOSED WITHOUT THE WRITTEN APPROVAL OF BEL FUSE INC.

RoHS  
2002/95/EC

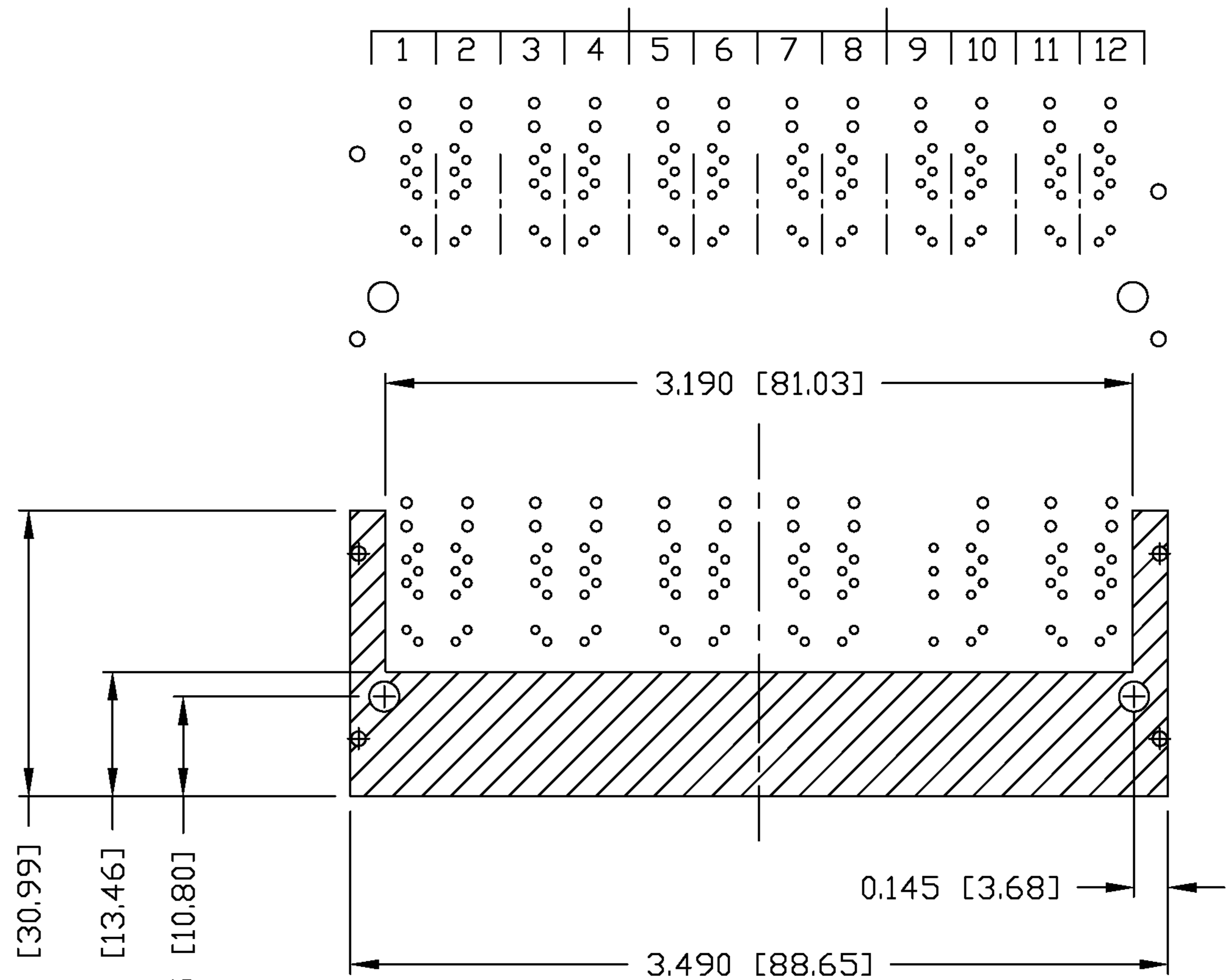


PIN-OUT INFORMATION  
(COMPONENT SIDE VIEW)

12	GRN (+)/DRG (-)
11	GRN (-)/DRG (+)
10	COMMON CT
9	RD+
8	RD-
7	TD+
6	TD-
5	NO PIN
4	NO PIN
3	Vc-
2	Vc+
1	NO PIN

UNUSED PIN LOCATIONS MUST BE REMOVED TO ENSURE 2KV ISOLATION.

PORT ASSIGNMENT  
(COMPONENT SIDE VIEW)

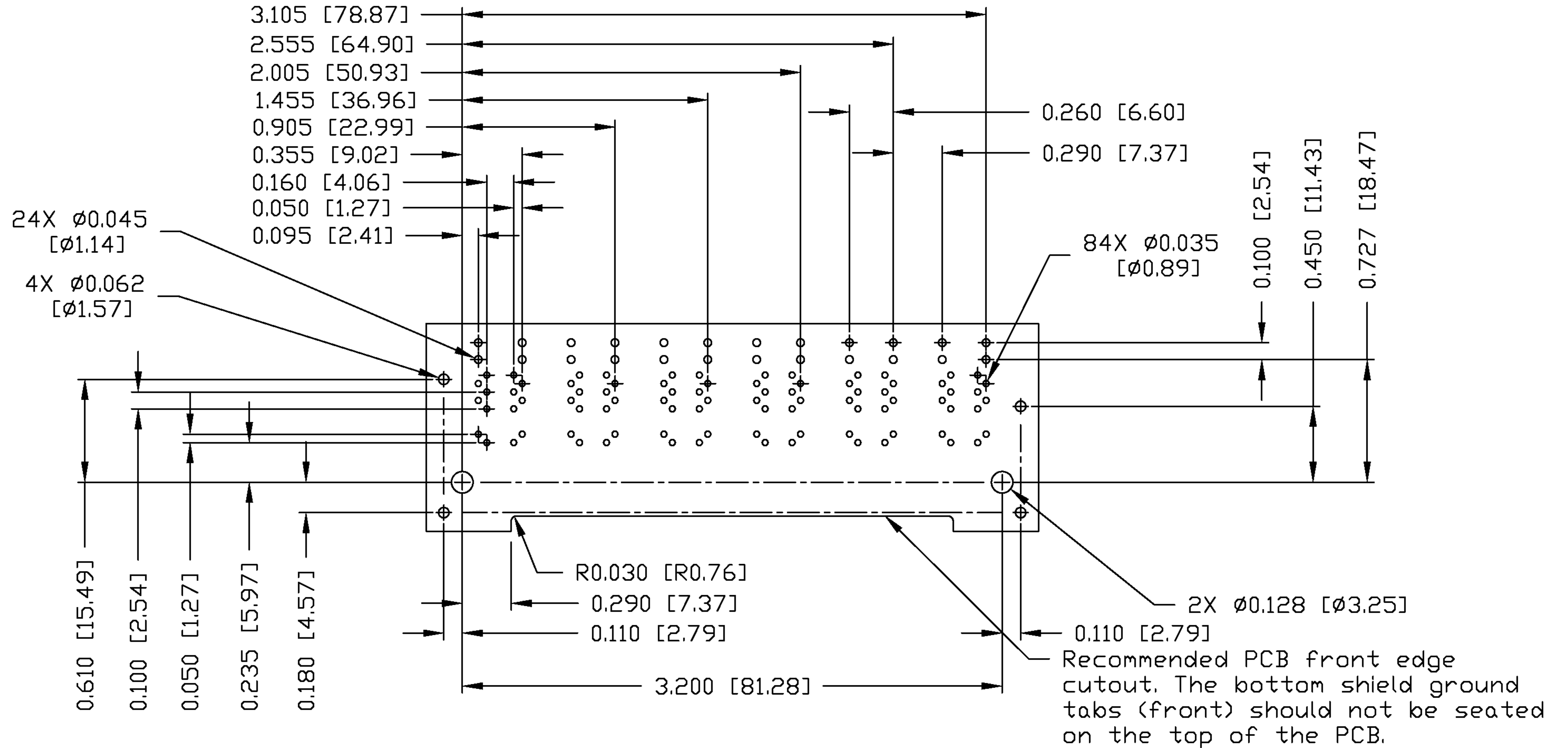


THE SHADED AREA ON THE CUSTOMER BOARD ARE RECOMMENDED TO BE CLEAR OFF ANY VIA HOLE OR COMPONENT PAD.

ORIGINATED BY QIN	DATE 03-04-06	TITLE 2X6 10/100 MagJack® VOIP/PDE W/LED	PART NO. / DRAWING NO. 08642X6R55-F	STANDARD DIM. TOL. IN INCH .X	[ ] METRIC DIM. AS REFERENCE UNIT : INCH [mm]	REV. : A	 COMPONENTS FOR A CONNECTED PLANET
DRAWN BY TING	DATE 03-04-06	0864-2X6R-55-F	FILE NAME 08642X6R55-FA.DWG	.XX	SCALE : N/A	SIZE : A4	
				.XXX ±0.004		PAGE : 4	

THE INFORMATION CONTAINED HEREIN IS CONSIDERED "PROPRIETARY" TO BEL FUSE INC. AND SHALL NOT BE COPIED, REPRODUCED OR DISCLOSED WITHOUT THE WRITTEN APPROVAL OF BEL FUSE INC.

RoHS  
2002/95/EC



SUGGESTED FOOTPRINT  
(COMPONENT SIDE VIEW)

ORIGINATED BY QIN	DATE 03-04-06	TITLE 2X6 10/100 MagJack® VOIP/POE W/LED 0864-2X6R-55-F	PART NO. / DRAWING NO. 08642X6R55-F	STANDARD DIM. TOL. IN INCH	[ ] METRIC DIM. AS REFERENCE	
DRAWN BY TING	DATE 03-04-06		FILE NAME 08642X6R55-FA.DWG	.X .XX .XXX	±0.004	UNIT : INCH [mm] SCALE : N/A

