

THE INFORMATION CONTAINED HEREIN IS CONSIDERED "PROPRIETARY" TO BEL FUSE INC. AND SHALL NOT BE COPIED, REPRODUCED OR DISCLOSED WITHOUT THE WRITTEN APPROVAL OF BEL FUSE INC.

LED POLARITY		
PIN 11	PIN 12	COLOR
-	+	GREEN
+	-	ORANGE

RoHS  
2002/95/EC



ELECTRICAL CHARACTERISTICS @ 25°C

URNS RATIO

TP1	1CT : 1CT ±2%
TP2	1CT : 1CT ±2%
TP3	1CT : 1CT ±2%
TP4	1CT : 1CT ±2%

OCL @ 100kHz/100mVRMS

8mA DC BIAS	350µH MIN.
-------------	------------

INS. LOSS

0.1MHz TO 1MHz	-1.1 dB MAX
1MHz TO 65MHz	-0.5 dB MAX
65MHz TO 100MHz	-0.8 dB MAX
100MHz TO 125MHz	-1.2 dB MAX

RET. LOSS (MIN) @ 100ΩHMS ±15%

0.5MHz-40MHz	-18 dB
40MHz-100MHz	-12+20LOG(f/80MHz) dB

CM TO CM REJ

100kHz - 100MHz	-30 dB MIN
-----------------	------------

CM TO DM REJ

100kHz - 100MHz	-35 dB MIN
-----------------	------------

HIPDT (Isolation Voltage):

RJ1-8 TO SHIELD	1500 Vrms or 2250 VDC
RJ1-8 TO PIN1-10	1500 Vrms or 2250 VDC
PIN1-10 TO SHIELD	800 VDC

100% OF PRODUCT TESTED IN PRODUCTION

TO COMPLY WITH IEEE 802.3 REQUIREMENTS

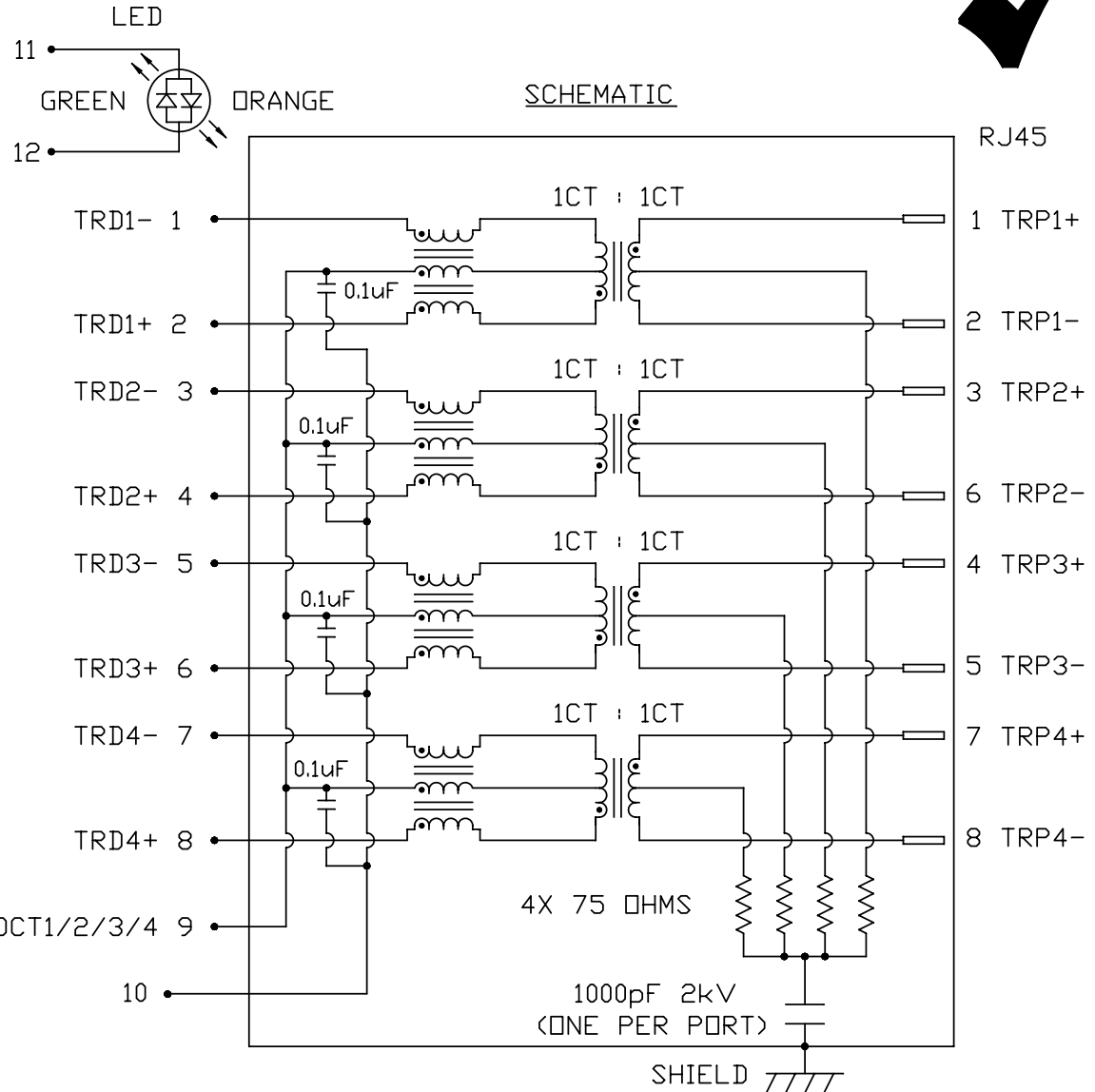
LED

VF (FORWARD VOLTAGE)	IF=20mA	GREEN	2.2V TYP.
		ORANGE	2.0V TYP.
λD (DOMINANT WAVELENGTH)	IF=20mA	GREEN	565nm TYP.
		ORANGE	610nm TYP.

OPERATING TEMPERATURE: -40°C TO 85°C

REMARK:

THIS SCHEMATIC IS DIFFERENT FROM BEL STANDARD SCHEMATIC.



ORIGINATED BY DATE  
CHOW WANGCHUNG 06-29-09

TITLE  
2X8 gigabit MagJack®  
(Extended temperatruer)  
0863-2X8R-Y4-F  
PATENTED

PART NO. / DRAWING NO.  
08632X8RY4-F

STANDARD DIM.  
TOL. IN INCH

[ ] METRIC DIM. AS REFERENCE

DRAWN BY DATE  
LEE WEIDE 06-29-09

FILE NAME  
08632X8RY4-F\_B.DWG

.X  
.XX  
.XXX

UNIT : INCH [mm]

REV. : B

SCALE : N/A

SIZE : A4

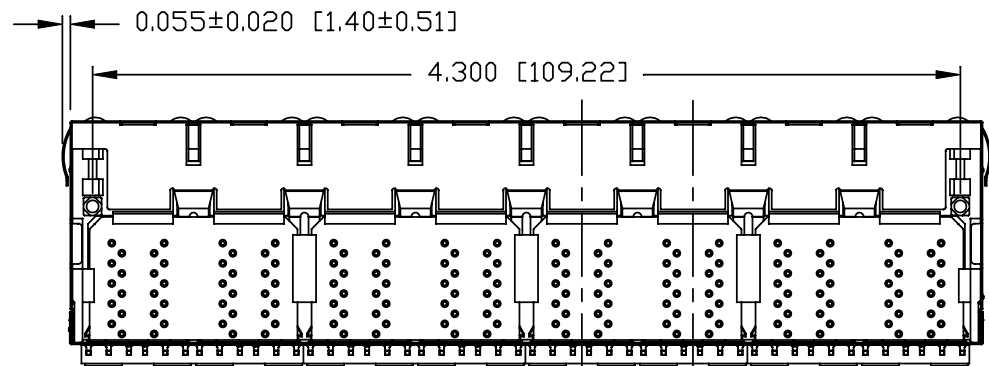
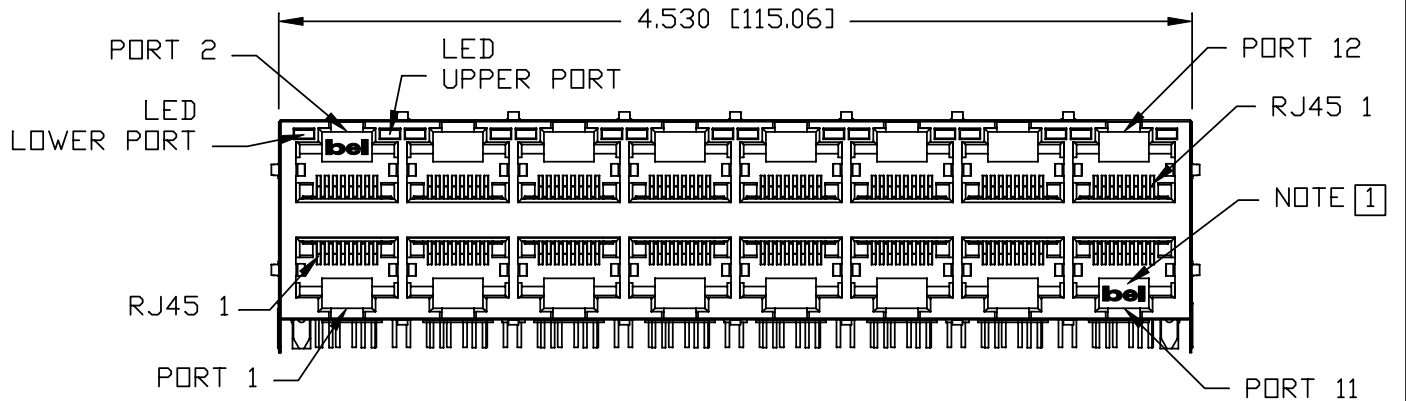
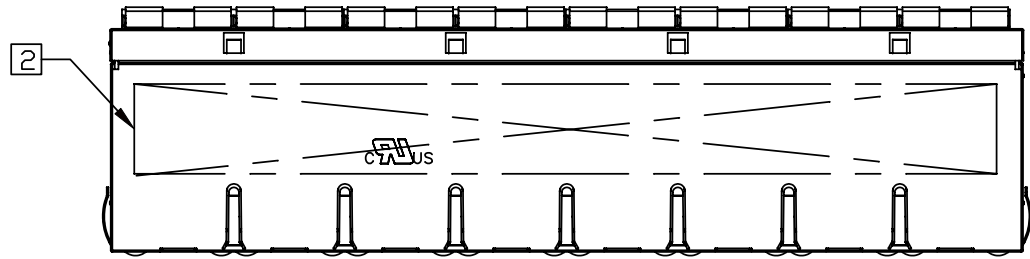
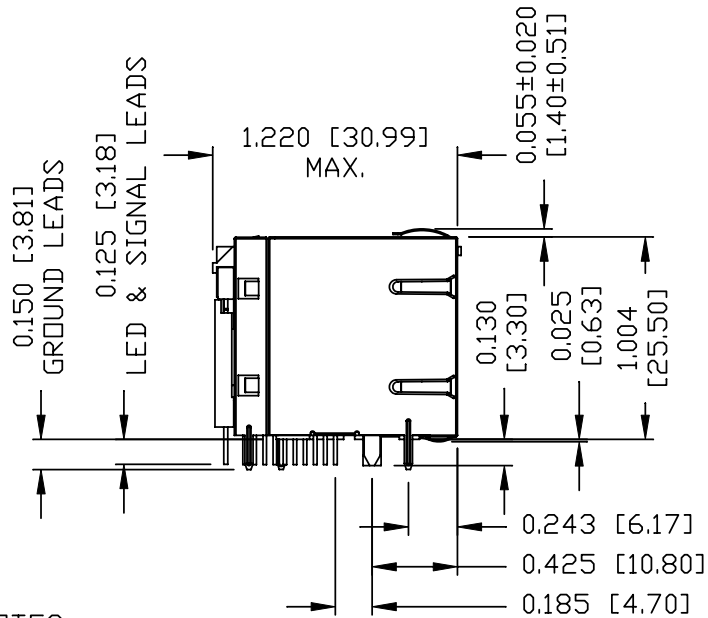
⊕

PAGE : 2



THE INFORMATION CONTAINED HEREIN IS CONSIDERED "PROPRIETARY" TO BEL FUSE INC. AND SHALL NOT BE COPIED, REPRODUCED OR DISCLOSED WITHOUT THE WRITTEN APPROVAL OF BEL FUSE INC.

RoHS  
2002/95/EC



**NOTES:**

- PLASTIC HOUSING: THERMOPLASTIC PBT  
FLAMMABILITY RATING UL 94V-0
- CONTACT PLATING: 50 MICRO-INCH HARD GOLD PLATING
- OUTPUT PINS: TIN-COATED COPPER WIRE, DIA 0.018 INCH.
- METAL SHIELD: NICKEL PLATED ON COPPER ALLOY.  
(ALL GROUND LEADS ARE SOLDER DIPPED)

1. JACK CAVITY CONFORMS TO FCC RULES AND REGULATIONS, PART 68 SUBPART F.

2. MARK PART WITH MFG LOGO, FMG NAME, PART NUMBER DATE CODE AND PATENTED.

3. RoHS COMPLIANCE, PER EU DIRECTIVE 2002/95/EC.

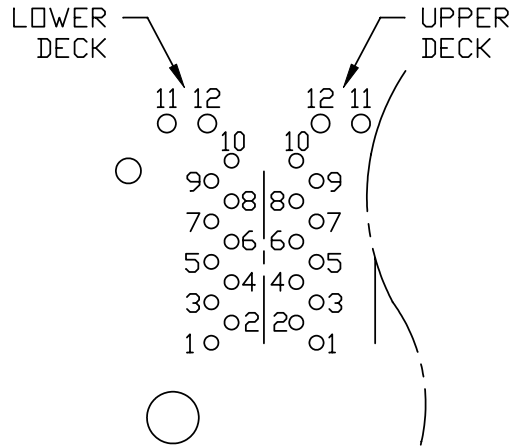
4. THE PRODUCT IS PATENTED, THE PATENT NUMBER IS U.S. PAT. 5,736,910.

ORIGINATED BY LIU QIN	DATE 06-29-09	TITLE 2X8 gigabit MagJack® (Extended temperatrue) 0863-2X8R-Y4-F PATENTED	PART NO. / DRAWING NO. 08632X8RY4-F	STANDARD DIM. TOL. IN INCH .X .XX .XXX	[ ] METRIC DIM. AS REFERENCE		REV. : B SIZE : A4 PAGE : 3
	DRAWN BY XIAN JIAXIN		DATE 06-29-09		FILE NAME 08632X8RY4-F_B.DWG	UNIT : INCH [mm]	

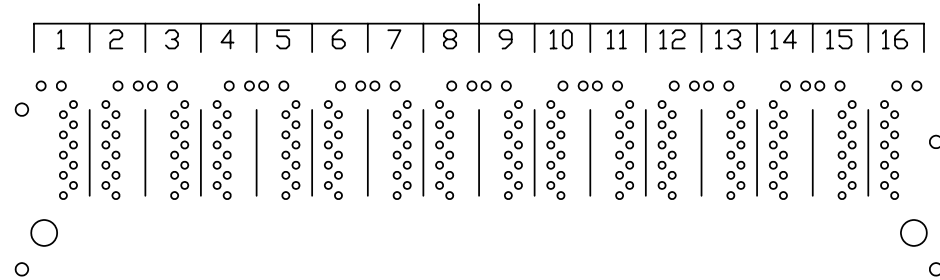


THE INFORMATION CONTAINED HEREIN IS CONSIDERED "PROPRIETARY" TO BEL FUSE INC. AND SHALL NOT BE COPIED, REPRODUCED OR DISCLOSED WITHOUT THE WRITTEN APPROVAL OF BEL FUSE INC.

RoHS  
2002/95/EC

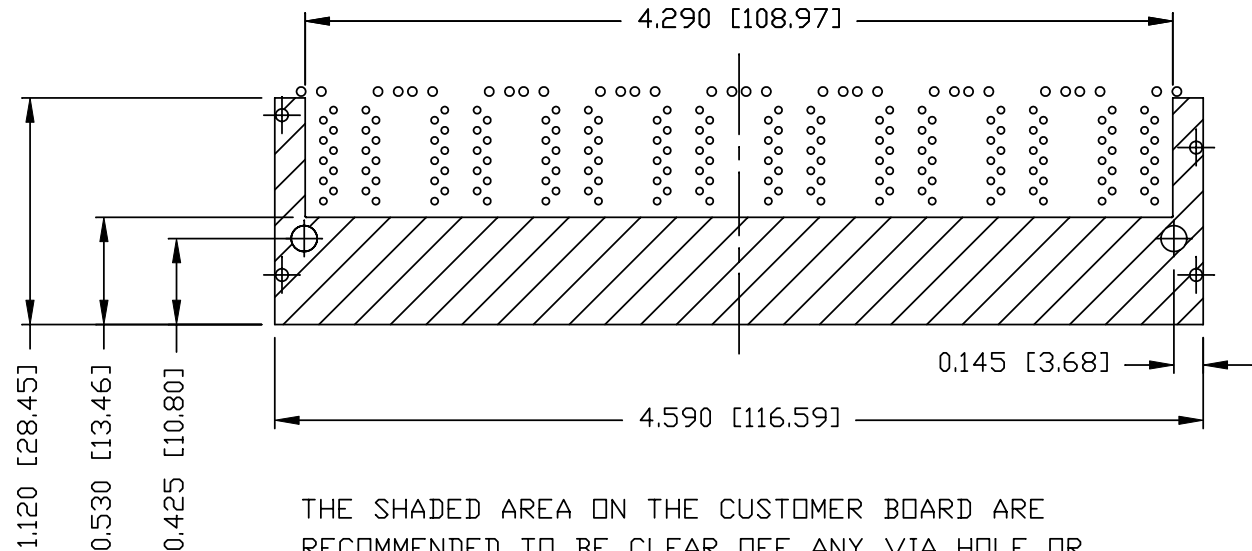


PORT ASSIGNMENT  
(COMPONENT SIDE VIEW)



PIN-OUT INFORMATION  
(COMPONENT SIDE VIEW)

12	GRN (+)/DRG (-)
11	GRN (-)/DRG (+)
10	GND
9	TRCT1/2/3/4
8	TRD 4+
7	TRD 4-
6	TRD 3+
5	TRD 3-
4	TRD 2+
3	TRD 2-
2	TRD 1+
1	TRD 1-



THE SHADED AREA ON THE CUSTOMER BOARD ARE RECOMMENDED TO BE CLEAR OFF ANY VIA HOLE OR COMPONENT PAD.

ORIGINATED BY	DATE	TITLE 2X8 gigabit MagJack® (Extended temperatrue) 0863-2X8R-Y4-F PATENTED
LIU QIN	06-29-09	
DRAWN BY	DATE	PART NO. / DRAWING NO. 08632X8RY4-F
XIAN JIAXIN	06-29-09	

STANDARD DIM. TOL. IN INCH	[ ] METRIC DIM. AS REFERENCE
.X	UNIT : INCH [mm]
.XX	SCALE : N/A
.XXX	±0.004

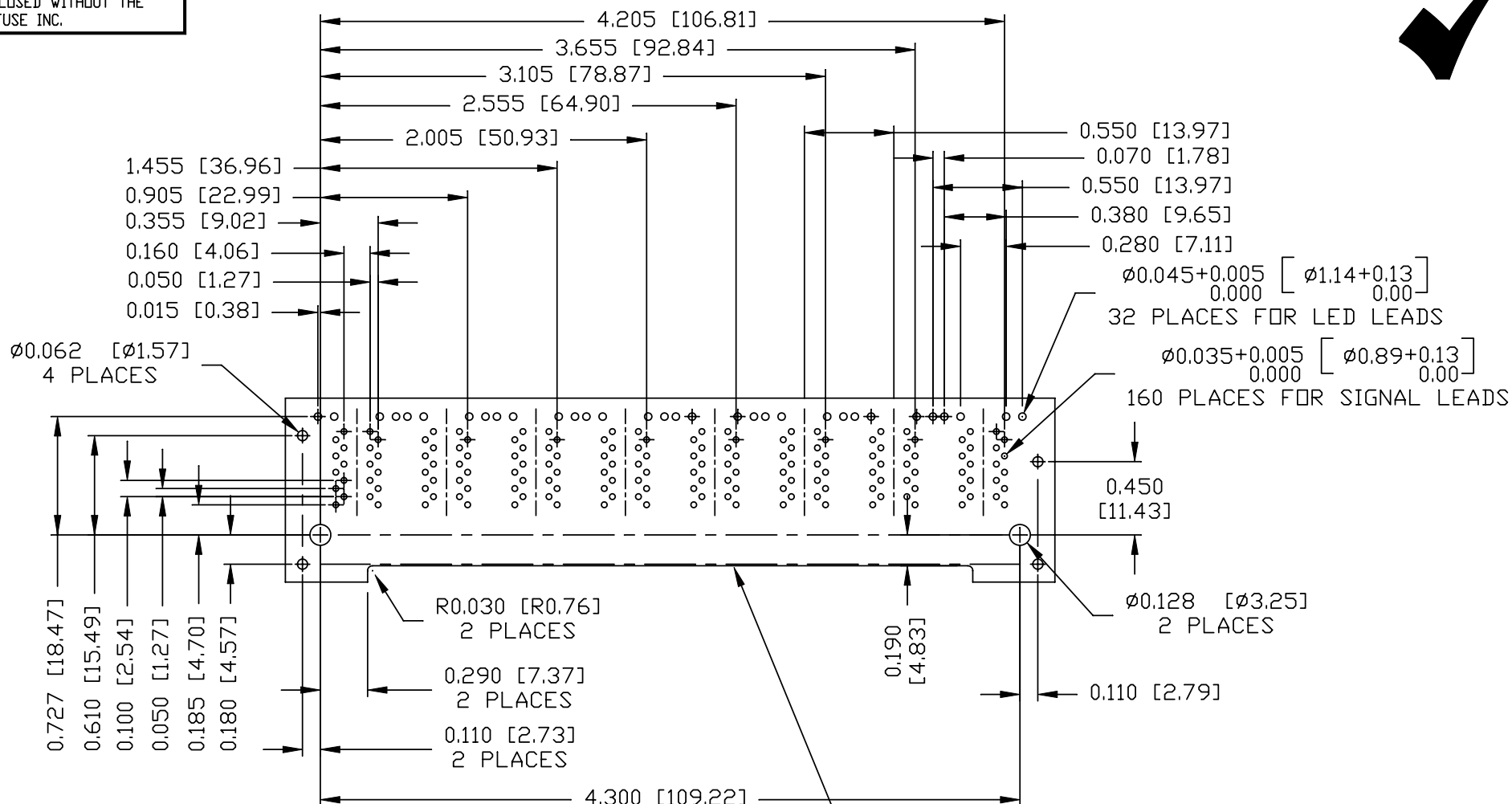
FILE NAME	08632X8RY4-F_B.DWG
REV. :	B
SIZE :	A4
PAGE :	4

UNIT : INCH [mm]	REV. : B
SCALE : N/A	SIZE : A4
±0.004	PAGE : 4



THE INFORMATION CONTAINED HEREIN IS CONSIDERED "PROPRIETARY" TO BEL FUSE INC. AND SHALL NOT BE COPIED, REPRODUCED OR DISCLOSED WITHOUT THE WRITTEN APPROVAL OF BEL FUSE INC.

RoHS  
2002/95/EC



SUGGESTED FOOTPRINT  
(COMPONENT SIDE VIEW)

Recommended PCB front edge cutout. The bottom shield ground tabs (front) should not be seated on the top of the PCB.

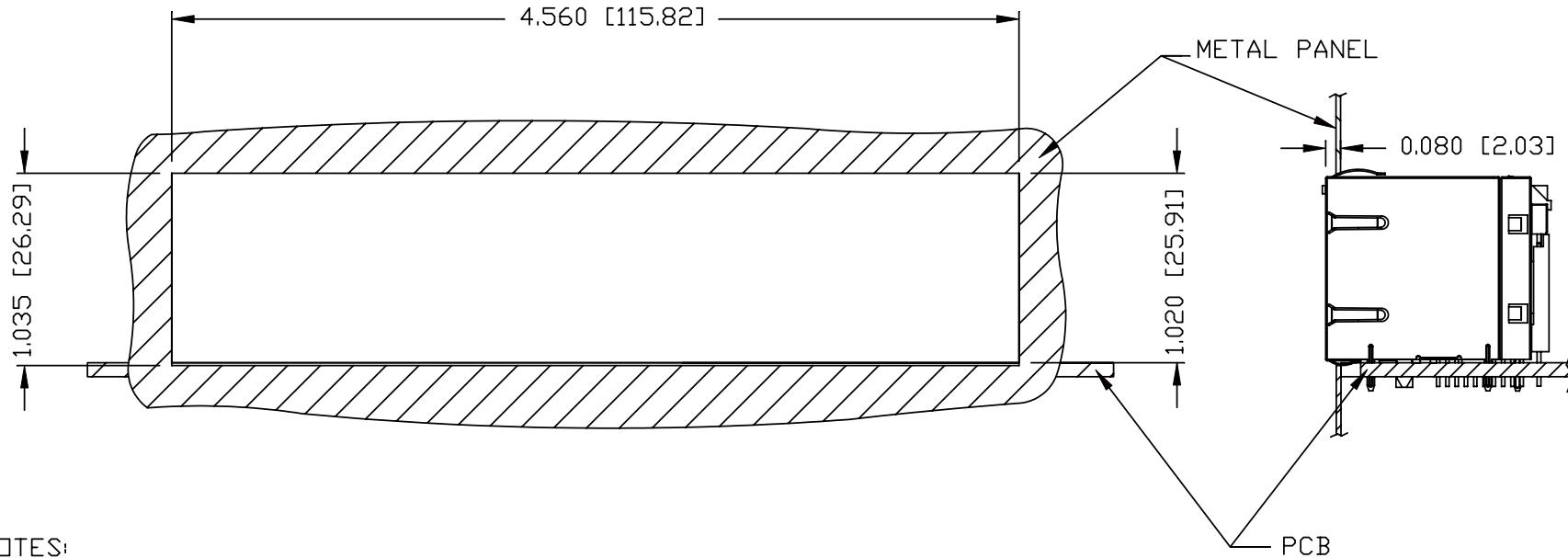
ORIGINATED BY LIU QIN	DATE 06-29-09	TITLE 2X8 gigabit MagJack® (Extended temperatrue) 0863-2X8R-Y4-F PATENTED	PART NO. / DRAWING NO. 08632X8RY4-F	STANDARD DIM.		[ ] METRIC DIM. AS REFERENCE		bel
				TOL. IN INCH		UNIT : INCH [mm]	REV. : B	
DRAWN BY XIAN JIAXIN	DATE 06-29-09		FILE NAME 08632X8RY4-F_B.DWG	.X	±0.004	SCALE : N/A	SIZE : A4	COMPONENTS FOR A CONNECTED PLANET
				.XX		UNIT : INCH [mm]	REV. : B	
				.XXX		UNIT : INCH [mm]	REV. : B	
					PAGE : 5			

THE INFORMATION CONTAINED HEREIN IS CONSIDERED "PROPRIETARY" TO BEL FUSE INC. AND SHALL NOT BE COPIED, REPRODUCED OR DISCLOSED WITHOUT THE WRITTEN APPROVAL OF BEL FUSE INC.

RoHS  
2002/95/EC



SUGGESTED PANEL OPENING



NOTES:

THE DISTANCE OF PANEL INSIDE SURFACE RELATIVE TO FRONT SURFACE OF PART IS ONLY A SUGGESTION. IN CASE THIS DISTANCE IS DIFFERENT, THE REQUIRED PANEL OPENING DIMENSIONS CHANGE ACCORDINGLY.

PACKING INFORMATION

PACKING TRAY : 0200-9999-B2 (TOP)  
0200-9999-B3 (BOTTOM)

PACKING QUANTITY : 10 PCS FINISHED GOODS PER TRAY  
7 TRAYS (70 PCS FINISHED GOODS) PER CARTON BOX

NOTE : CARDBOARDS ARE PLACED BETWEEN LAYERS OF PACKING TRAY INSIDE CARTON BOX  
(INCLUDE THE UPPERMOST AND LOWERMOST TRAY)

ORIGINATED BY LIU QIN	DATE 06-29-09	TITLE 2X8 gigabit MagJack® (Extended temperatruer) 0863-2X8R-Y4-F PATENTED	PART NO. / DRAWING NO. 08632X8RY4-F	STANDARD DIM. TOL. IN INCH		[ ] METRIC DIM. AS REFERENCE		REV. : B	bel
	DRAWN BY XIAN JIAXIN			DATE 06-29-09	FILE NAME 08632X8RY4-F_B.DWG	.X			
				.XX		SCALE : N/A			COMPONENTS FOR A CONNECTED PLANET
				.XXX	±0.004		PAGE : 6		