

DC BLOCKING TERMINATION

SMPM, 100 kHz - 50 GHz, 1/2 Watt

SPECIFICATIONS:

Models: 8541-MPF

RoHS
Compliant

AEROFLEX
A passion for performance.

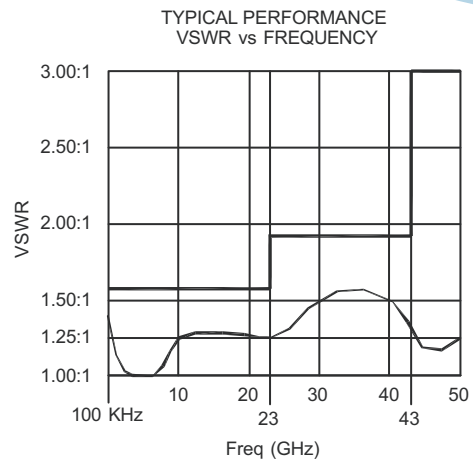
Electrical:

Frequency Range _____ 100 KHz - 50 GHz
 VSWR
 100 KHz - 23 GHz _____ 1.57:1 Max. (-13dB Return Loss)
 23 - 43 GHz _____ 1.92:1 Max. (-10dB Return Loss)
 43 - 50 GHz _____ 3.00:1 Max. (-6dB Return Loss)
 Input Power _____ 1/2 Watt Avg.
 Impedance _____ 50 Ohms
 Voltage Rating _____ 10 Volts Max DC
 Operating Temp. Range _____ -65°C to +125°C

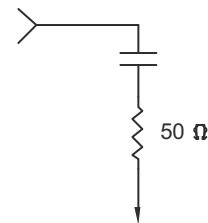
Mechanical:

SMPM Connectors _____ Gold Plated Beryllium Copper
 Mates with MILSTD-348 & GPPO™ Connectors
 Conductors _____ Gold Plated Beryllium Copper
 Housing _____ Gold Plated Beryllium Copper

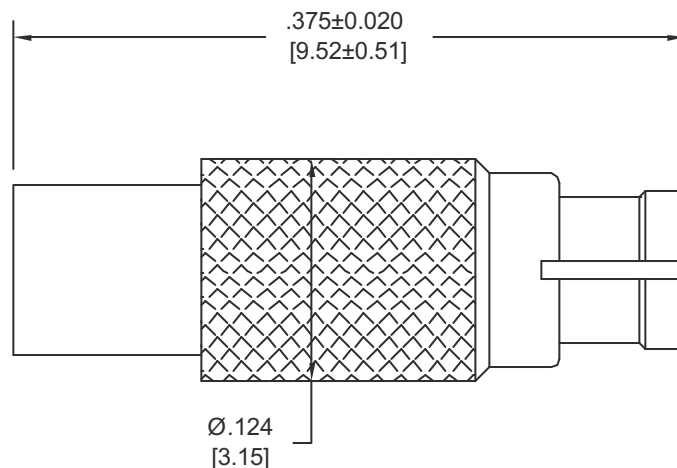
*GPPO is a trademark of Corning Gilbert Inc.



Model Number: **8541-MPF**



SCHEMATIC DIAGRAM



Note: Dimensions in Brackets are Expressed in Millimeters and are for Reference Only.

8541: REV -

AEROFLEX
INMET

Aeroflex / Inmet, Inc. • 300 Dino Drive, Ann Arbor, MI 48103 • U.S.A.
 888-244-6638 or 734-426-5553 • FAX: 734-426-5557
 www.aeroflex.com/inmet • inmet-sales@eroflex.com