

ADAPTERS, IN-SERIES

BNC, DC - 8 GHz,

SPECIFICATIONS:

Models: 5031, 5032, 5033

RoHS
Compliant

AEROFLEX
A passion for performance.

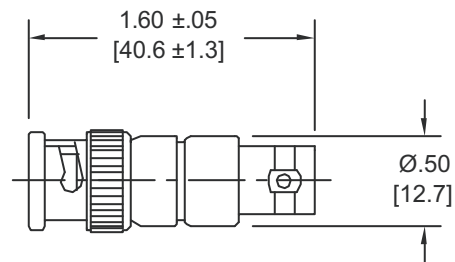
Electrical:

Frequency Range _____ DC - 8.0 GHz
VSWR _____ 1.25:1 Max.
Impedance _____ 50 Ohms
Operating Temp Range _____ -65°C to +125°C

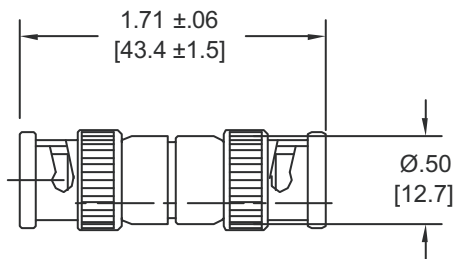
Mechanical:

Connectors _____ Nickel Plated Brass
Mates with MILSTD-348
Conductors _____ Gold Plated Beryllium Copper

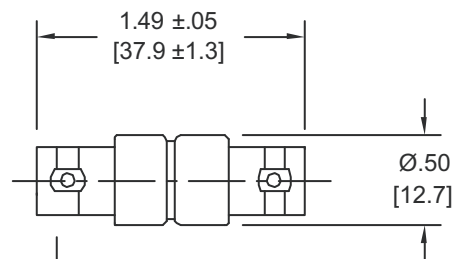
Model Number: **5031**
Male/Female Connectors



Model Number: **5033**
Male/Male Connectors



Model Number: **5032**
Female/Female Connectors



Note: Dimensions in Brackets are Expressed in Millimeters and are for Reference Only.

5031: REV C

AEROFLEX
INMET

Aeroflex / Inmet, Inc. • 300 Dino Drive, Ann Arbor, MI 48103 • U.S.A.
888-244-6638 or 734-426-5553 • FAX: 734-426-5557
www.aeroflex.com/inmet • inmet-sales@eroflex.com