

ADAPTERS, In-Series

1.85mm, DC - 65 GHz, Bulkhead Mount

SPECIFICATIONS:

Models: 5289, 5290

RoHS
Compliant

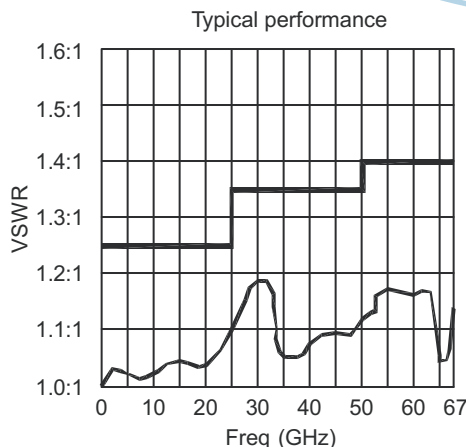
AEROFLEX
A passion for performance.

Electrical:

Frequency Range _____ DC - 65 GHz
 VSWR
 DC - 26.5 GHz _____ 1.25:1 Max.
 26.5 - 50 GHz _____ 1.35:1 Max.
 50 - 65 GHz _____ 1.40:1 Max.
 Impedance _____ 50 Ohms
 Operating Temp Range _____ -65°C to +125°C

Mechanical:

Connectors _____ Passivated Stainless Steel
 Mates with 2.4mm & V* connectors
 Conductors _____ Gold Plated Beryllium Copper
 O-Ring _____ 70 Durometer Buna N

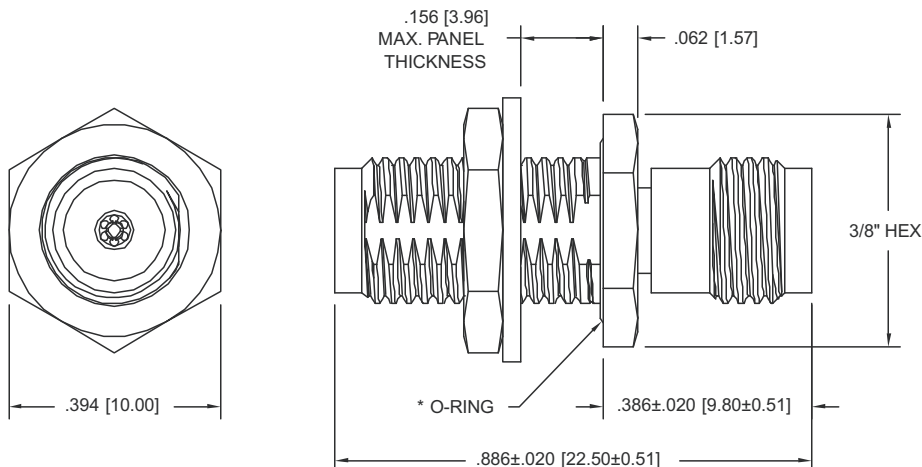
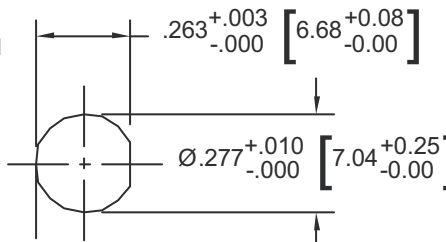


* V is a Trademark of Anritsu Corp.

Model Number: **5289**
 *Includes O-Ring as Shown

Model Number: **5290**
 No O-Ring Included

**Recommended
Mounting Hole**



Panel Nut, Lock Washer & O-Ring are Shipped Unassembled

Note: Dimensions in Brackets are Expressed in Millimeters and are for Reference Only.
 Design, specifications are subject to change without notice. Contact factory for technical specifications before purchasing and/or use.

5289: REV B

AEROFLEX
INMET

Aeroflex / Inmet, Inc. • 300 Dino Drive, Ann Arbor, MI 48103 • U.S.A.
 888-244-6638 or 734-426-5553 • FAX: 734-426-5557
 www.aeroflex.com/inmet • inmet@aeroflex.com