

THE INFORMATION CONTAINED HEREIN IS CONSIDERED "PROPRIETARY" TO BEL FUSE INC. AND SHALL NOT BE COPIED, REPRODUCED OR DISCLOSED WITHOUT THE WRITTEN APPROVAL OF BEL FUSE INC.

| LED 1 POLARITY |        |        | LED 2 POLARITY |        |        |
|----------------|--------|--------|----------------|--------|--------|
| PIN 17         | PIN 18 | COLOR  | PIN 19         | PIN 20 | COLOR  |
| -              | +      | YELLOW | +              | -      | ORANGE |
| /              | /      | /      | -              | +      | GREEN  |

PRELIMINARY



**ELECTRICAL CHARACTERISTICS @ 25°C**

**URNS RATIO**

|     |               |
|-----|---------------|
| TP2 | 1CT : 1CT ±2% |
| TP3 | 1CT : 1CT ±2% |
| TP4 | 1CT : 1CT ±2% |

**OC L @ 100kHz/100mVRMS (4CHANNEL)**

11mA DC BIAS 350µH MIN.

Compliant to IEEE 802.3at specification

**INS. LOSS**

|                  |             |
|------------------|-------------|
| 0.1MHz TO 1MHz   | -1.1 dB MAX |
| 1MHz TO 65MHz    | -0.8 dB MAX |
| 65MHz TO 100MHz  | -1.0 dB MAX |
| 100MHz TO 125MHz | -1.2 dB MAX |

**RET. LOSS (MIN)**

|              |                       |
|--------------|-----------------------|
| 0.5MHz-40MHz | -18 dB                |
| 40MHz-100MHz | -12+20LOG(f/80MHz) dB |

**CM TO CM REJ**

100kHz - 100MHz -30 dB MIN

**CM TO DM REJ**

100kHz - 100MHz -35 dB MIN

**HIPOT (Isolation Voltage):**

2250 VDC

100% OF PRODUCTION TESTED TO COMPLY

WITH IEEE 802.3 ISOLATION REQUIREMENTS

**BALANCED DC LINE CURRENT 720 mA MAX. @ 57 VDC CONTINUOUS**

1.2 A MAX. @ 57 VDC FOR 200 MILLISECONDS

**OPERATING TEMPERATURE:**

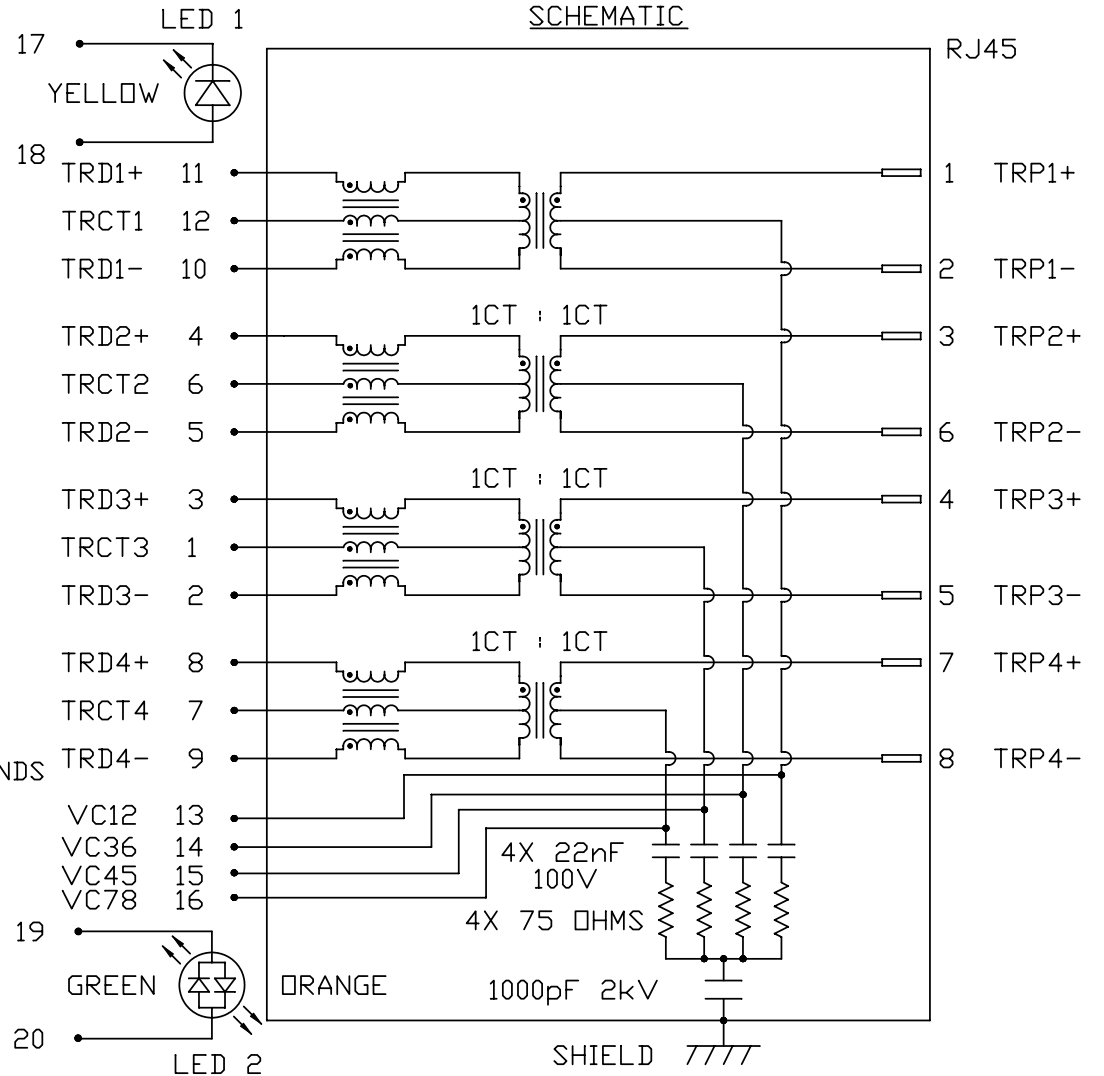
-40°C TO 85°C

**LED 1**

|                          |                |            |
|--------------------------|----------------|------------|
| VF (FORWARD VOLTAGE)     | IF=20mA YELLOW | 2.1V TYP.  |
| λD (DOMINANT WAVELENGTH) | IF=20mA YELLOW | 590nm TYP. |

**LED 2**

|                          |               |            |
|--------------------------|---------------|------------|
| VF (FORWARD VOLTAGE)     | IF=20mA GREEN | 2.2V TYP.  |
|                          | ORANGE        | 2.0V TYP.  |
| λD (DOMINANT WAVELENGTH) | IF=20mA GREEN | 565nm TYP. |
|                          | ORANGE        | 610nm TYP. |



|                      |             |
|----------------------|-------------|
| <b>ORIGINATED BY</b> | <b>DATE</b> |
| CHOW WANCHUNG        | 06-12-09    |
| <b>DRAWN BY</b>      | <b>DATE</b> |
| LI YONG FENG         | 06-12-09    |

|                               |  |
|-------------------------------|--|
| <b>TITLE</b>                  | 1X4 gigabit MagJack®<br>(PoEp, Extended Temperature) |
| <b>PART NO. / DRAWING NO.</b> | 08261X4TGH-F   |
| <b>FILE NAME</b>              | 0826-1X4T-GH-F<br>PATENTED<br>08261X4TGH-F_PB.DWG    |

|                                   |                              |
|-----------------------------------|------------------------------|
| <b>STANDARD DIM. TOL. IN INCH</b> | [ ] METRIC DIM. AS REFERENCE |
| .X                                | UNIT : INCH [mm]             |
| .XX                               | SCALE : N/A                  |
| .XXX                              | REV. : PB                    |
|                                   | SIZE : A4                    |
|                                   | PAGE : 2                     |

|                         |                  |
|-------------------------|------------------|
| <b>UNIT : INCH [mm]</b> | <b>REV. : PB</b> |
| <b>SCALE : N/A</b>      | <b>SIZE : A4</b> |
| <b>PAGE : 2</b>         |                  |



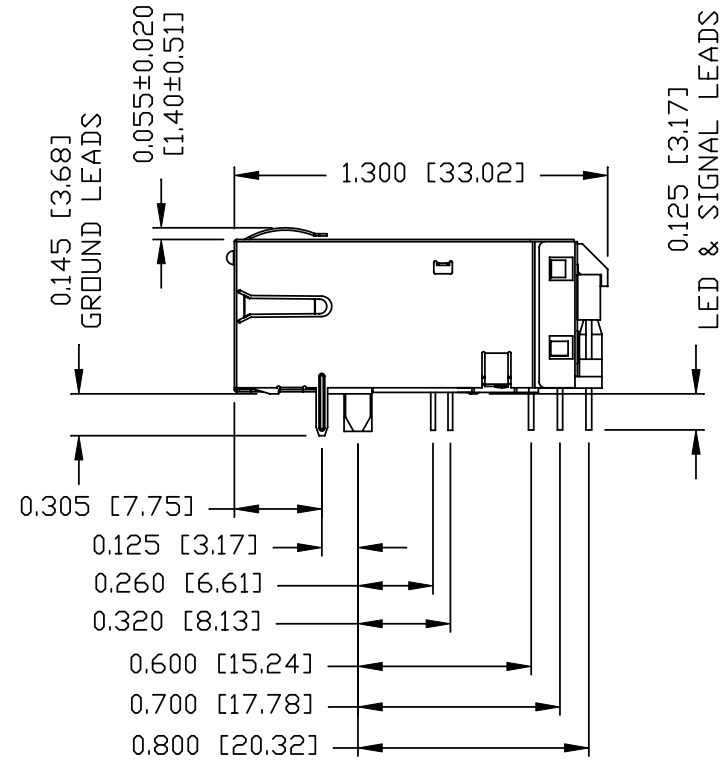
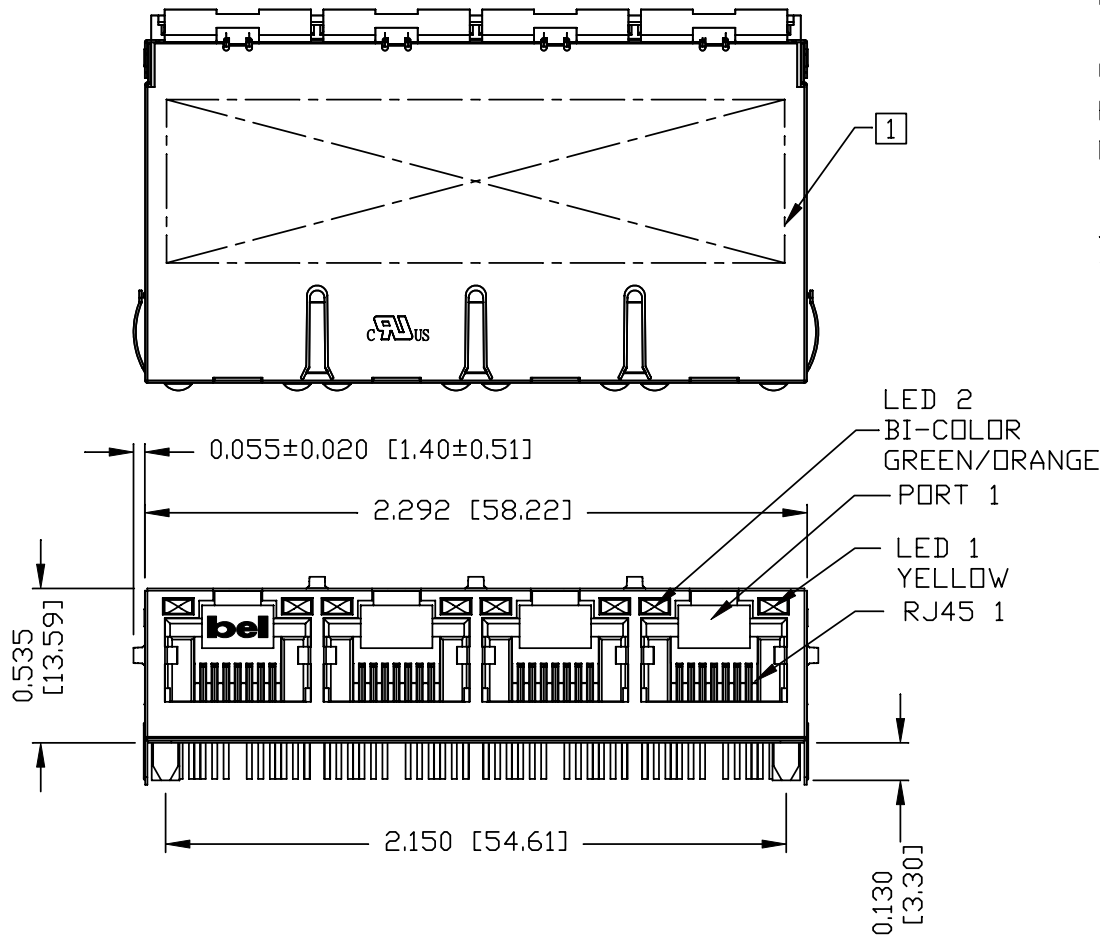
THE INFORMATION CONTAINED HEREIN IS CONSIDERED "PROPRIETARY" TO BEL FUSE INC. AND SHALL NOT BE COPIED, REPRODUCED OR DISCLOSED WITHOUT THE WRITTEN APPROVAL OF BEL FUSE INC.

PRELIMINARY



NOTES:

PLASTIC HOUSING: THERMOPLASTIC PBT  
 FLAMMABILITY RATING UL 94V-0  
 CONTACTS PLATING: 50 MICRO-INCH HARD GOLD PLATING  
 PINS: TIN-COATED COPPER WIRE, DIA 0.018 INCH.  
 METAL SHIELD: NICKEL PLATED ON COPPER ALLOY.  
 (ALL GROUND LEADS ARE SOLDER DIPPED)  
 JACK CAVITY CONFORMS TO FCC RULES AND REGULATIONS.  
 THE PRODUCT IS PATENTED, THE PATENT NUMBER IS U.S. PAT. 5,736,910.



1 MARK PART WITH MFG LOGO, MFG NAME, PART NUMBER DATE CODE AND PATENTED.

RoHS COMPLIANCE, PER EU DIRECTIVE 2002/95/EC.

**UL** US UL RECOGNIZED - FILE #E196366 AND E169987.

|                            |                  |   |  |                            |        |                              |           |   |
|----------------------------|------------------|---|--|----------------------------|--------|------------------------------|-----------|---|
| ORIGINATED BY<br>CHEN BILL | DATE<br>06-12-09 | TITLE<br>1X4 gigabit MagJack®<br>(PoEp, Extended Temperature) | PART NO. / DRAWING NO.<br>08261X4TGH-F | STANDARD DIM. TOL. IN INCH |        | [ ] METRIC DIM. AS REFERENCE |           | <b>bel</b><br>COMPONENTS FOR A CONNECTED PLANET |
|                            |                  |   |  | .X                         |        | UNIT : INCH [mm]             | REV. : PB |   |
| DRAWN BY<br>LIU QIN        | DATE<br>06-12-09 | 0826-1X4T-GH-F<br>PATENTED                                    | FILE NAME<br>08261X4TGH-F_PB.DWG       | .XX                        |        | SCALE : N/A                  | SIZE : A4 | PAGE : 3  |
|                            |                  |   |  | .XXX                       | ±0.010 |                              |           |   |

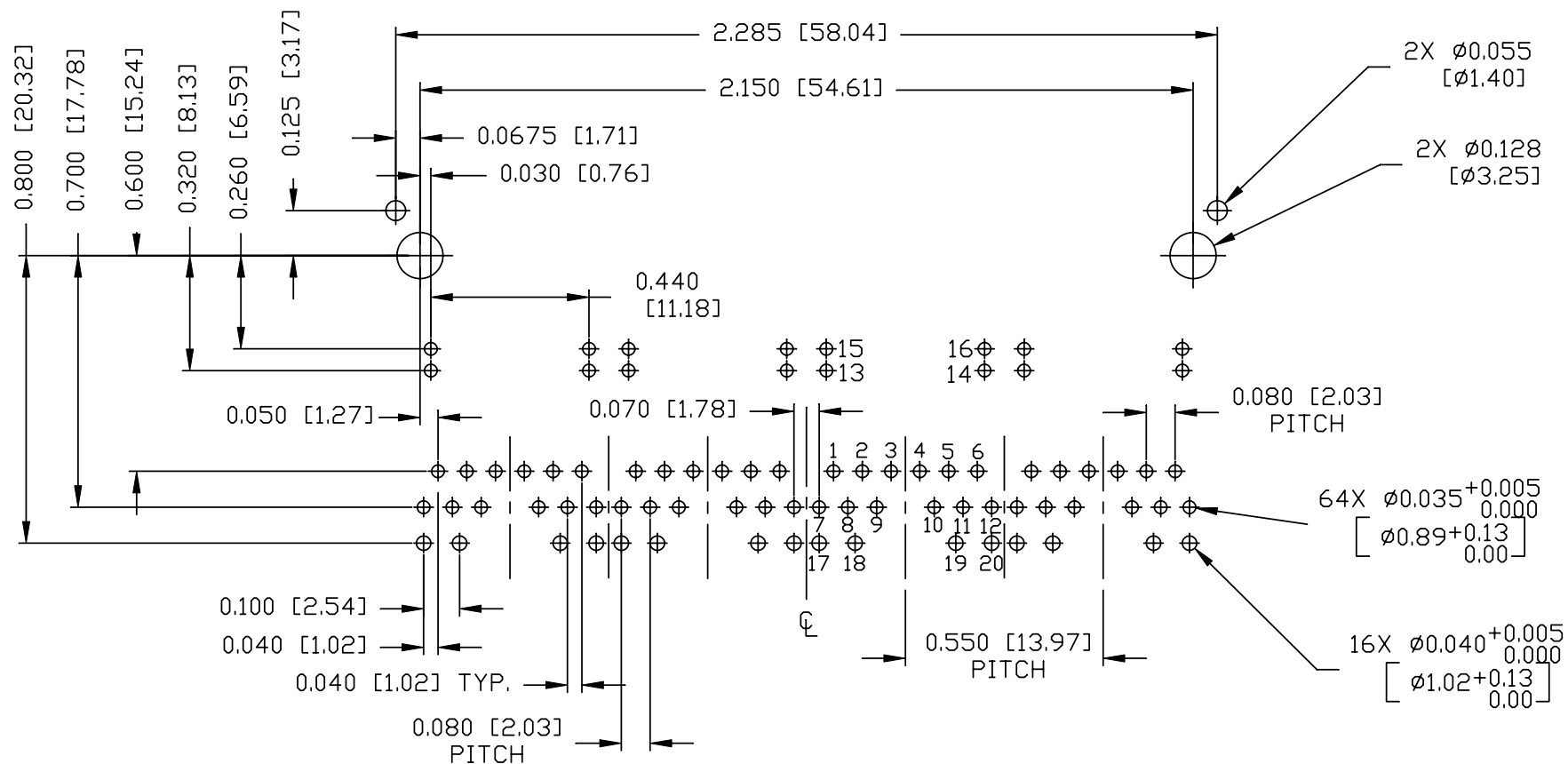
THE INFORMATION CONTAINED HEREIN IS CONSIDERED "PROPRIETARY" TO BEL FUSE INC. AND SHALL NOT BE COPIED, REPRODUCED OR DISCLOSED WITHOUT THE WRITTEN APPROVAL OF BEL FUSE INC.

RoHS  
2002/95/EC



RECOMMENDED PCB FOOTPRINT  
COMPONENT SIDE VIEW

PRELIMINARY

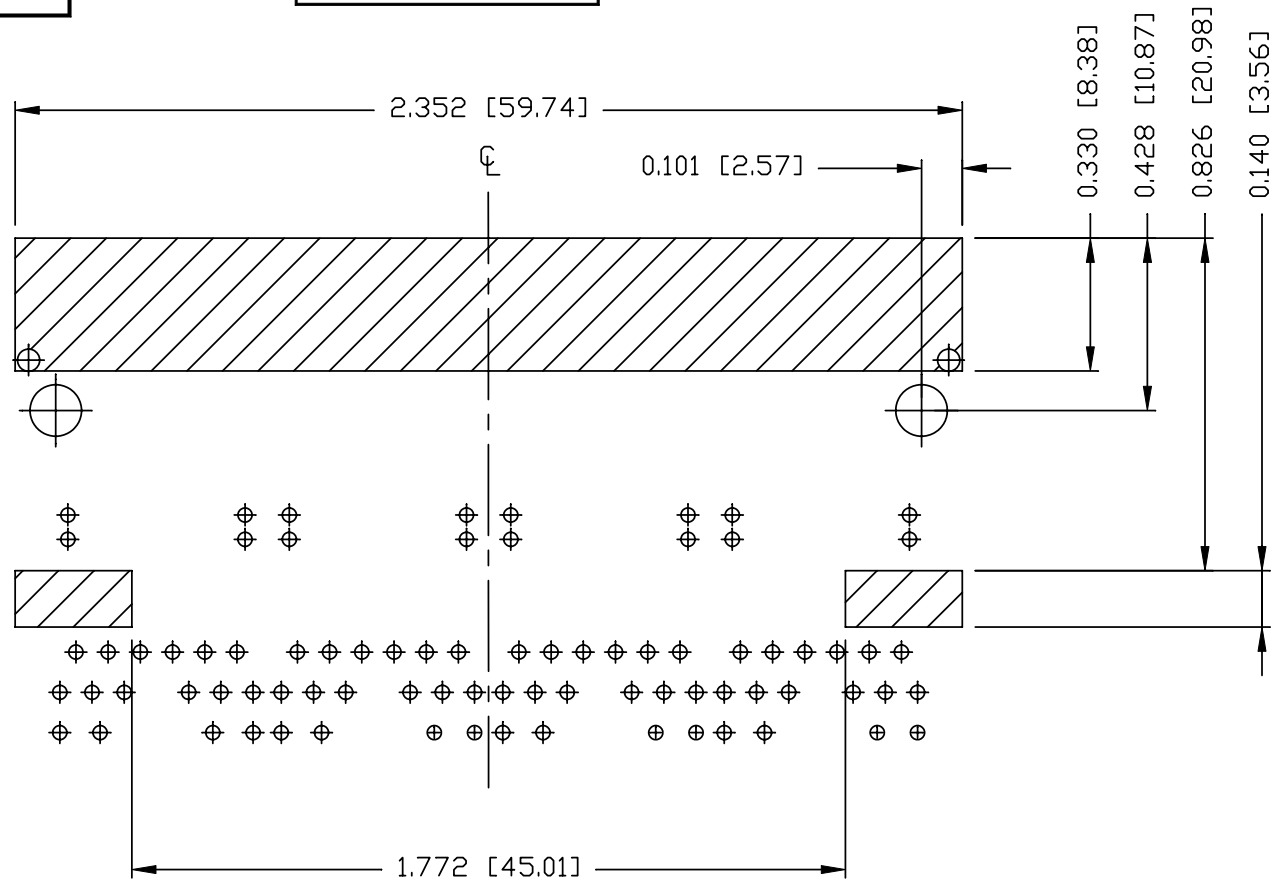


|                            |                  |   |  |                               |        |                              |           |
|----------------------------|------------------|---|--|-------------------------------|--------|------------------------------|-----------|
| ORIGINATED BY<br>CHEN BILL | DATE<br>06-12-09 | TITLE<br>1X4 gigabit MagJack®<br>(PoEp, Extended Temperature)<br>0826-1X4T-GH-F<br>PATENTED | PART NO. / DRAWING NO.<br>08261X4TGH-F | STANDARD DIM.<br>TOL. IN INCH |        | [ ] METRIC DIM. AS REFERENCE |           |
|                            |                  |   |  | .X                            |        | UNIT : INCH [mm]             | REV. : PB |
| DRAWN BY<br>LIU QIN        | DATE<br>06-12-09 |   | FILE NAME<br>08261X4TGH-F_PB.DWG       | .XX                           |        | SCALE : N/A                  | SIZE : A4 |
|                            |                  |   |  | .XXX                          | ±0.004 |                              | PAGE : 4  |



THE INFORMATION CONTAINED HEREIN IS CONSIDERED "PROPRIETARY" TO BEL FUSE INC. AND SHALL NOT BE COPIED, REPRODUCED OR DISCLOSED WITHOUT THE WRITTEN APPROVAL OF BEL FUSE INC.

PRELIMINARY



NOTES:

THE SHADED AREA ON THE CUSTOMER BOARD ARE RECOMMENDED TO BE CLEAR OFF ANY VIA HOLE OR COMPONENT PAD.

|                            |                     |   |  |   |                              |                  |           |          |   |
|----------------------------|---------------------|---|--|---|------------------------------|------------------|-----------|----------|---|
| ORIGINATED BY<br>CHEN BILL | DATE<br>06-12-09    | TITLE<br>1X4 gigabit MagJack®<br>(PoEp, Extended Temperature)<br>0826-1X4T-GH-F<br>PATENTED | PART NO. / DRAWING NO.<br>08261X4TGH-F | STANDARD DIM.<br>TOL. IN INCH<br>.X<br>.XX<br>.XXX ±0.004 | [ ] METRIC DIM. AS REFERENCE |                  | REV. : PB | PAGE : 5 | <br>COMPONENTS FOR A<br>CONNECTED<br>PLANET |
|                            | DRAWN BY<br>LIU QIN |   |  |   | DATE<br>06-12-09             | UNIT : INCH [mm] |           |          |   |
|                            |                     |   | FILE NAME<br>08261X4TGH-F_PB.DWG       | ±0.004  |                              |                  |           |          |   |
|                            |                     |   |  |   |                              |                  |           |          |   |

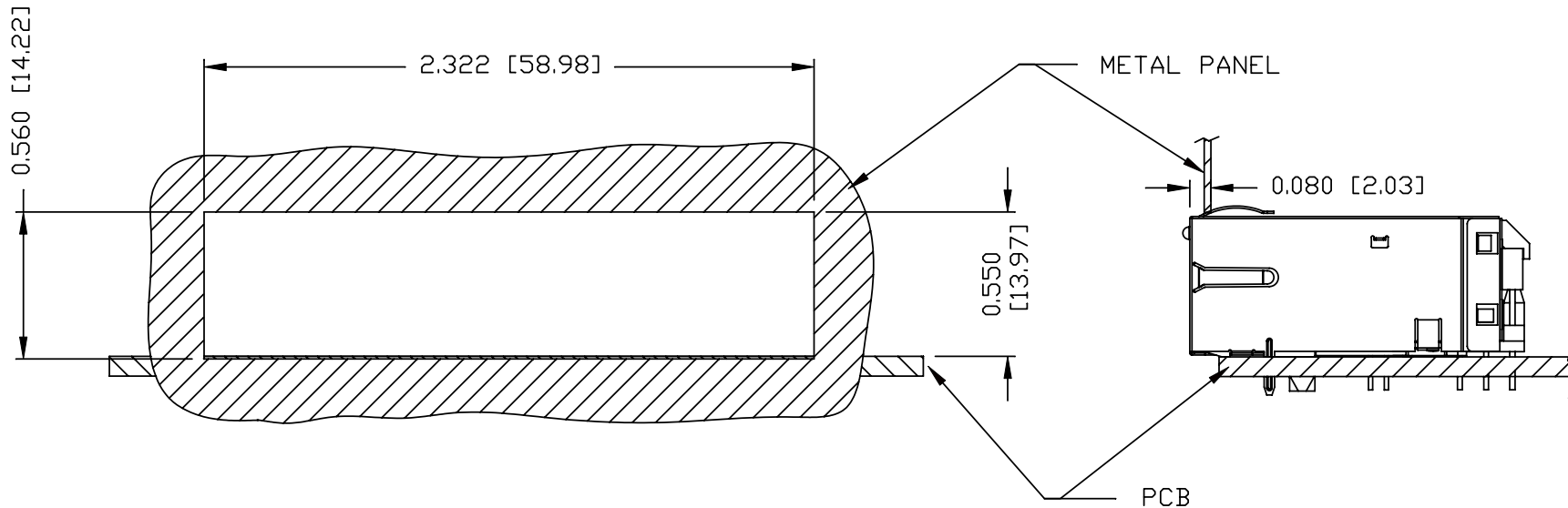
THE INFORMATION CONTAINED HEREIN IS CONSIDERED "PROPRIETARY" TO BEL FUSE INC. AND SHALL NOT BE COPIED, REPRODUCED OR DISCLOSED WITHOUT THE WRITTEN APPROVAL OF BEL FUSE INC.

RoHS  
2002/95/EC



PRELIMINARY

SUGGESTED PANEL OPENING



NOTES:

THE DISTANCE OF PANEL INSIDE SURFACE RELATIVE TO FRONT SURFACE OF PART IS ONLY A SUGGESTION. IN CASE THIS DISTANCE IS DIFFERENT, THE REQUIRED PANEL OPENING DIMENSIONS CHANGE ACCORDINGLY.

PACKING INFORMATION

PACKING TRAY : 0200-9999-B4 (TOP)

0200-9999-B5 (BOTTOM)

PACKING QUANTITY : 24 PCS FINISHED GOODS PER TRAY

10 TRAYS (240 PCS FINISHED GOODS) PER CARTON BOX

NOTE : CARDBOARDS ARE PLACED BETWEEN LAYERS OF PACKING TRAY INSIDE CARTON BOX

(INCLUDE THE UPPERMOST AND LOWERMOST TRAY)

|                            |                  |   |  |                            |        |                              |           |  |
|----------------------------|------------------|---|--|----------------------------|--------|------------------------------|-----------|--|
| ORIGINATED BY<br>CHEN BILL | DATE<br>06-12-09 | TITLE<br>1X4 gigabit MagJack®<br>(PoEp, Extended Temperature)<br>0826-1X4T-GH-F<br>PATENTED | PART NO. / DRAWING NO.<br>08261X4TGH-F | STANDARD DIM. TOL. IN INCH |        | [ ] METRIC DIM. AS REFERENCE |           | bel<br>COMPONENTS FOR A<br>CONNECTED<br>PLANET |
|                            |                  |   |  | .X                         |        | UNIT : INCH [mm]             | REV. : PB |  |
| DRAWN BY<br>LIU QIN        | DATE<br>06-12-09 |   | FILE NAME<br>08261X4TGH-F_PB.DWG       | .XX                        |        | SCALE : N/A                  | SIZE : A4 | PAGE : 6                                       |
|                            |                  |   |  | .XXX                       | ±0.004 |                              |           |  |