

<TRANSISTOR ARRAY>

M54562FP

8-UNIT 500mA DARLINGTON TRANSISTOR ARRAY WITH CLAMP DIODE
SOURCE TYPE

DESCRIPTION

M54562FP is an eight-circuit output-sourcing darlington transistor array. The circuits are made of PNP and NPN transistors. This semiconductor integrated circuit performs high current driving with extremely low input-current supply.

FEATURES

- High breakdown voltage ($BV_{CEO} \geq 50V$)
- High-current driving ($I_o(\max) = -500mA$)
- With clamping diodes
- Driving available with PMOS IC output of 6 ~ 16V or with TTL output
- Output current-sourcing type

APPLICATIONS

Drives of relays, printers, LEDs, fluorescent display tubes and lamps, and interfaces between MOS-bipolar logic systems and relays, solenoids, or small motors.

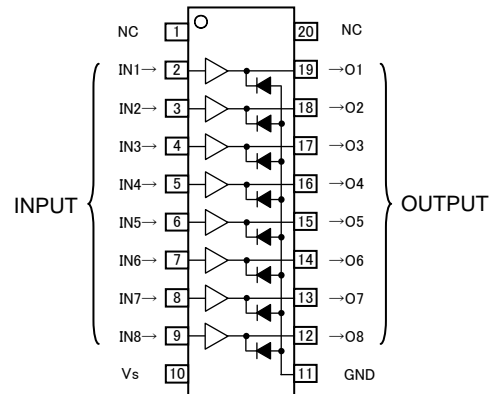
FUNCTION

The M54562FP each have eight circuits, which are made of input inverters and current-sourcing outputs.

The outputs are made of PNP transistors and NPN Darlington transistors. The PNP transistor base current is constant. A clamping diode is provided between each output and GND. VS and GND are used commonly among the eight circuits.

The inputs have resistance of 8.5k Ω , and voltage of up to 30V is applicable. Output current is 500 mA maximum. Supply voltage VS is 50V maximum.

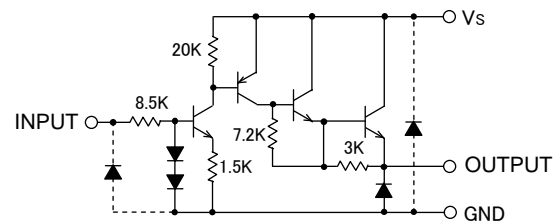
PIN CONFIGURATION



Package type 20P2N-A

NC : No connection

CIRCUIT DIAGRAM



The eight circuits share the VS and GND.

The diode, indicated with the dotted line, is parasitic, and cannot be used.

Unit : Ω

ABSOLUTE MAXIMUM RATINGS (Unless otherwise noted, $T_a = -20 \sim +75^\circ C$)

Symbol	Parameter	Conditions	Ratings	Unit
V_{CE0} #	Collector-emitter voltage	Output, L	-0.5 ~ +50	V
V_s	Supply voltage		50	V
V_i	Input voltage		-0.5 ~ +30	V
I_o	Output current	Current per circuit output, H	- 500	mA
I_F	Clamping diode forward current		- 500	mA
V_R #	Clamping diode reverse voltage		50	V
P_d	Power dissipation	$T_a = 25^\circ C$, when mounted on board	1.10	W
T_{opr}	Operating temperature		-20 ~ +75	$^\circ C$
T_{stg}	Storage temperature		-55 ~ +125	$^\circ C$

: Unused Input pins must be connected to GND.

<TRANSISTOR ARRAY>

M54562FP

8-UNIT 500mA DARLINGTON TRANSISTOR ARRAY WITH CLAMP DIODE SOURCE TYPE

RECOMMENDED OPERATING (Unless otherwise noted, $T_a = -20 \sim +75^\circ\text{C}$)

Symbol	Parameter	Limits			Unit	
		min	typ	max		
V_s	Supply voltage	0	—	50	V	
I_o	Output current (Current per 1 circuit when 8 circuits are coming on simultaneously)	Duty Cycle no more than 5%	0	—	-350	mA
		Duty Cycle no more than 30%	0	—	-100	
V_{IH}	"H" input voltage	2.4	5.0	30	V	
V_{IL}	"L" input voltage	0	—	0.2	V	

ELECTRICAL CHARACTERISTICS (Unless otherwise noted, $T_a = -20 \sim +75^\circ\text{C}$)

Symbol	Parameter	Test conditions	Limits			Unit
			min	typ*	max	
$I_{s(\text{leak})}$ #	Supply leak current	$V_s = 50\text{V}, V_i = 0.2\text{V}$	—	—	100	μA
$V_{CE(\text{sat})}$	Collector-emitter saturation voltage	$V_s = 10\text{V}, V_i = 2.4\text{V}, I_o = -350\text{mA}$	—	1.75	2.4	V
		$V_s = 10\text{V}, V_i = 2.4\text{V}, I_o = -100\text{mA}$	—	1.5	2.0	
I_i	Input current	$V_i = 5\text{V}$	—	0.48	0.75	mA
		$V_i = 25\text{V}$	—	2.8	4.7	
I_s	Supply current	$V_s = 50\text{V}, V_i = 5\text{V}$ (all input)	—	5.6	15.0	mA
V_F #	Clamping diode forward voltage	$I_F = -350\text{mA}$	—	-1.2	-2.4	V
I_R	Clamping diode reverse current	$V_R = 50\text{V}$	—	—	100	μA

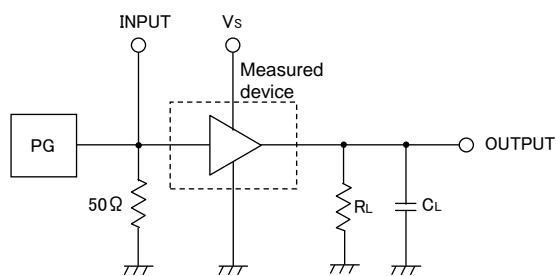
* : The typical values are those measured under ambient temperature (T_a) of 25°C . There is no guarantee that these values are obtained under any conditions.

: Unused Input pins must be connected to GND.

SWITCHING CHARACTERISTICS (Unless otherwise noted, $T_a = 25^\circ\text{C}$)

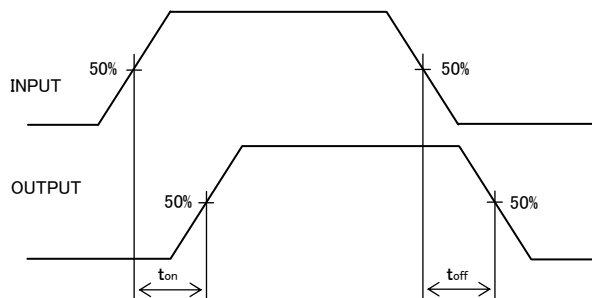
Symbol	Parameter	Test conditions	Limits			Unit
			min	typ	max	
t_{on}	Turn-on time	$C_L = 15\text{pF}$ (note 1)	—	110	—	ns
t_{off}	Turn-off time		—	5200	—	ns

NOTE 1 TEST CIRCUIT



- (1) Pulse generator (PG) characteristics: PRR = 1kHz, $t_w = 10\text{ms}$, $t_r = 6\text{ns}$, $t_f = 6\text{ns}$, $Z_o = 50\Omega$, $V_i = 0$ to 2.4V
- (2) Input-output conditions : $R_L = 30\Omega$, $V_s = 10\text{V}$
- (3) Electrostatic capacity C_L includes floating capacitance at connections and input capacitance at probes

TIMING DIAGRAM

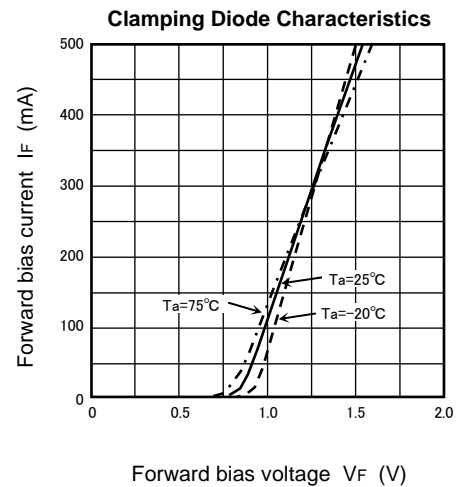
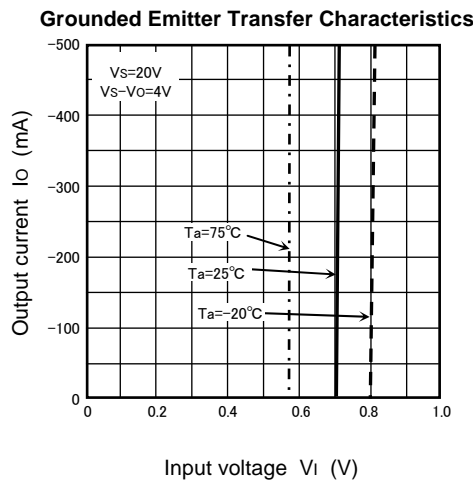
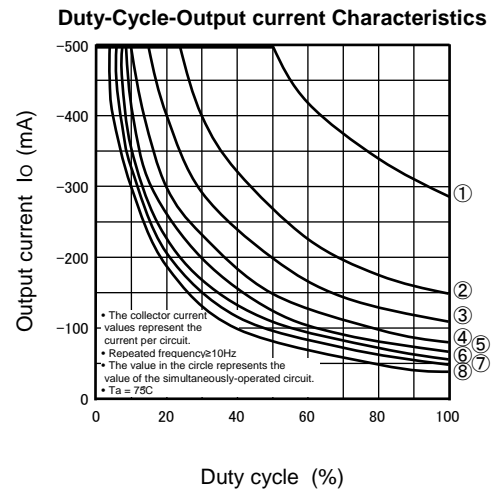
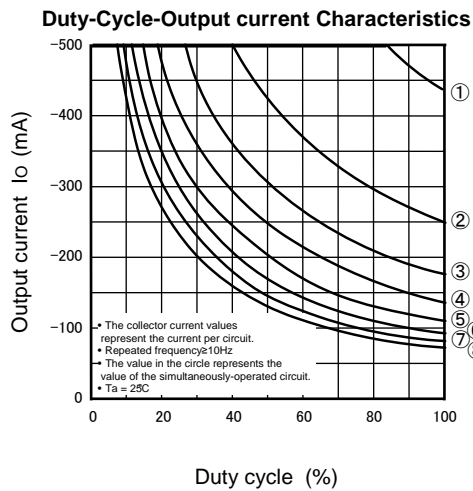
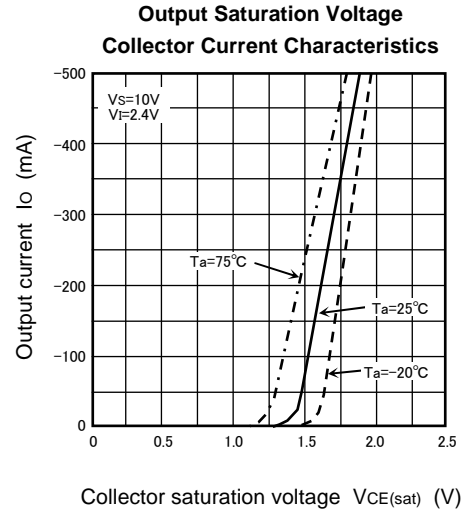
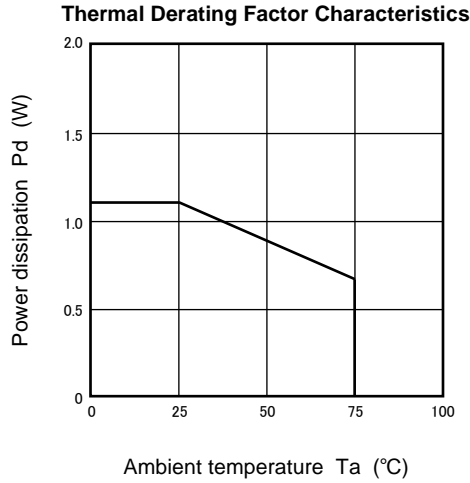


<TRANSISTOR ARRAY>

M54562FP

8-UNIT 500mA DARLINGTON TRANSISTOR ARRAY WITH CLAMP DIODE SOURCE TYPE

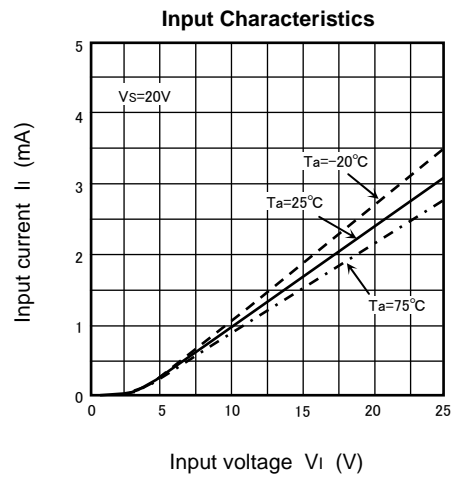
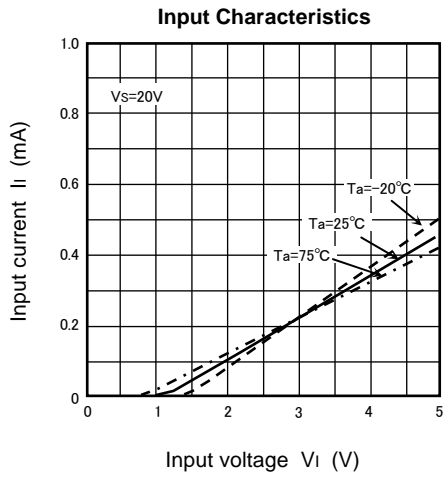
TYPICAL CHARACTERISTICS



<TRANSISTOR ARRAY>

M54562FP

8-UNIT 500mA DARLINGTON TRANSISTOR ARRAY WITH CLAMP DIODE
SOURCE TYPE



<TRANSISTOR ARRAY>

M54562FP

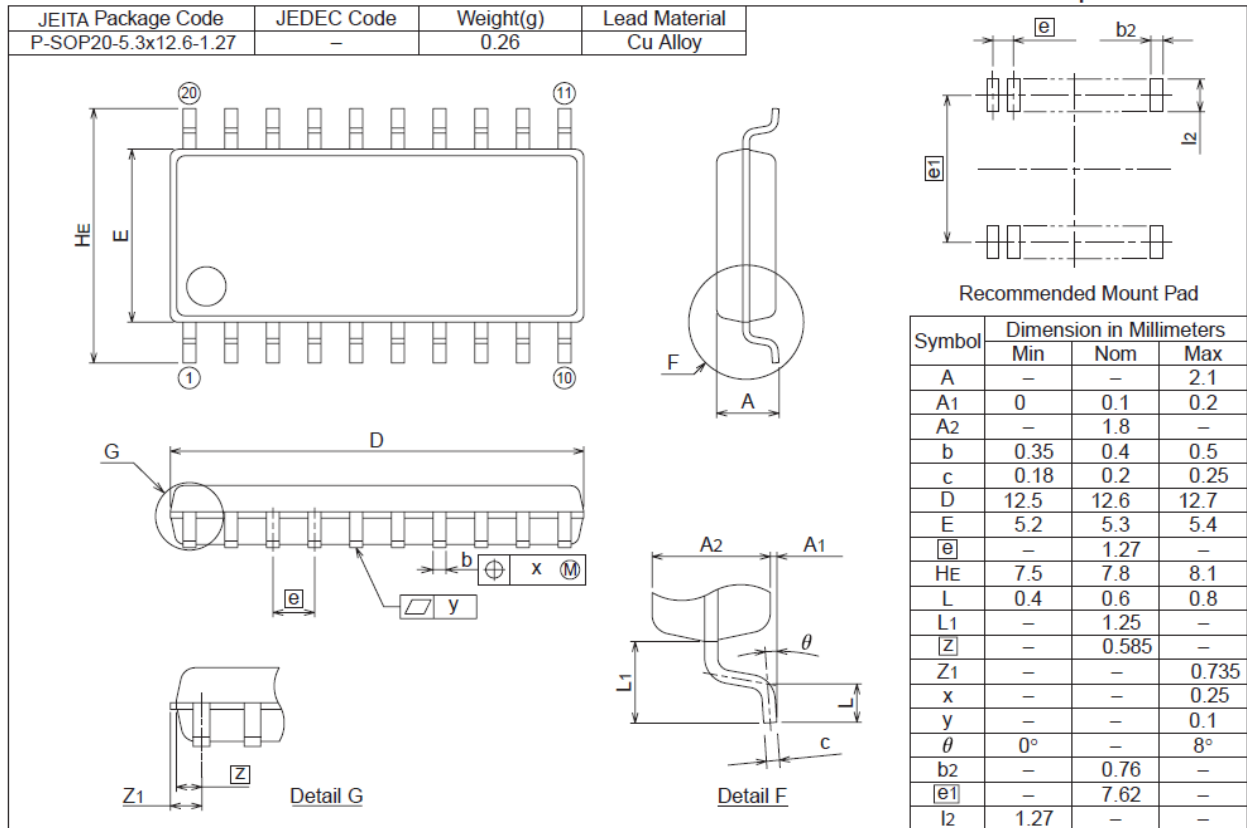
8-UNIT 500mA DARLINGTON TRANSISTOR ARRAY WITH CLAMP DIODE
SOURCE TYPE

PACKAGE OUTLINE

20P2N-A

JEITA Package Code	JEDEC Code	Weight(g)	Lead Material
P-SOP20-5.3x12.6-1.27	-	0.26	Cu Alloy

Plastic 20pin 300mil SOP



Keep safety first in your circuit designs!

Mitsubishi Electric Corporation puts the maximum effort into making semiconductor products better and more reliable, but there is always the possibility that trouble may occur with them. Trouble with semiconductors may lead to personal injury, fire or property damage. Remember to give due consideration to safety when making your circuit designs, with appropriate measures such as (i) placement of substitutive, auxiliary circuits, (ii) use of non-flammable material or (iii) prevention against any malfunction or mishap.

Notes regarding these materials

- These materials are intended as a reference to assist our customers in the selection of the Mitsubishi semiconductor product best suited to the customer's application; they do not convey any license under any intellectual property rights, or any other rights, belonging to Mitsubishi Electric Corporation or a third party.
- Mitsubishi Electric Corporation assumes no responsibility for any damage, or infringement of any third-party's rights, originating in the use of any product data, diagrams, charts, programs, algorithms, or circuit application examples contained in these materials.
- All information contained in these materials, including product data, diagrams, charts, programs and algorithms represents information on products at the time of publication of these materials, and are subject to change by Mitsubishi Electric Corporation without notice due to product improvements or other reasons. It is therefore recommended that customers contact Mitsubishi Electric Corporation or an authorized Mitsubishi Semiconductor product distributor for the latest product information before purchasing a product listed herein.

The information described here may contain technical inaccuracies or typographical errors. Mitsubishi Electric Corporation assumes no responsibility for any damage, liability, or other loss rising from these inaccuracies or errors.

Please also pay attention to information published by Mitsubishi Electric Corporation by various means, including the Mitsubishi Semiconductor home page (<http://www.MitsubishiElectric.com/>).

- When using any or all of the information contained in these materials, including product data, diagrams, charts, programs, and algorithms, please be sure to evaluate all information as a total system before making a final decision on the applicability of the information and products. Mitsubishi Electric Corporation assumes no responsibility for any damage, liability or other loss resulting from the information contained herein.
- Mitsubishi Electric Corporation semiconductors are not designed or manufactured for use in a device or system that is used under circumstances in which human life is potentially at stake. Please contact Mitsubishi Electric Corporation or an authorized Mitsubishi Semiconductor product distributor when considering the use of a product contained herein for any specific purposes, such as apparatus or systems for transportation, vehicular, medical, aerospace, nuclear, or undersea repeater use.
- The prior written approval of Mitsubishi Electric Corporation is necessary to reprint or reproduce in whole or in part these materials.
- If these products or technologies are subject to the Japanese export control restrictions, they must be exported under a license from the Japanese government and cannot be imported into a country other than the approved destination.
Any diversion or re-export contrary to the export control laws and regulations of Japan and/or the country of destination is prohibited.
- Please contact Mitsubishi Electric Corporation or an authorized Mitsubishi Semiconductor product distributor for further details on these materials or the products contained therein.