

Brightness Light Distribution Characteristics Measurement System C9920-11



Brightness, emission spectrum and chromaticity of light emitting devices are measured in relation to the detection angle.

The emission of devices like organic LEDs or other light sources varies strongly with the viewing angle. For proper characterization of such samples it is therefore necessary to measure brightness, chromaticity and the emission spectrum for different detection angles. Hamamatsu C9920-11 Brightness Light Distribution Characteristics Measurement meets these needs by using a rotating stage as sample mount and a highly sensitive detector.

The device is mounted on the rotating stage and placed inside a dark sample chamber. It is excited by constant current or voltage. The electroluminescence is collected by a condensing lens into the light guide. This is connected to the highly sensitive CCD spectrometer which measures instantaneously the whole emission spectrum.

The software measures the emission spectrum for each angle and displays besides each spectrum brightness, angle dependency, I-V-L characteristics and chromaticity.

Furthermore the external quantum efficiency under a Lambertian assumption be calculated, but it can be corrected using the emission angle distribution characteristics.

C9920-11 shares common configuration for C9920-02, -03 which measures an absolute quantum yields of photo-luminescent materials, and for C9920-12 which measures luminous efficiency of LEDs. C9920-02, -03 and/or C9920-12 can be configured by adding the optical parts, excitation light source, and dedicated measurement software.

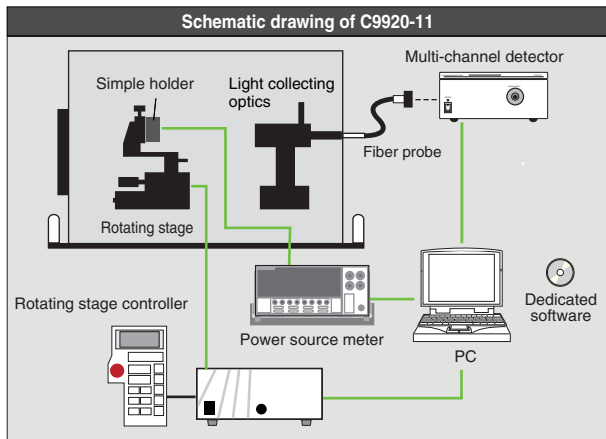
Applications

- Development of LED devices
 - Organic LEDs
 - Inorganic LEDs



Brightness, emission spectrum, and chromaticity are measured for each emission angle

While controlling the rotating stage, it is possible to measure brightness, emission spectrum and chromaticity for each angle. With the rotating stage and power source meter control, it is possible to measure the spectrum instantaneously at each current (voltage) step and display the measurement results in various graphs, including polar plots.



Features

- Brightness, emission spectrum and chromaticity are measured in relation to the emission angle.
- For each step the whole emission spectrum is measured instantaneously by our multi-channel detector.
- Using a high-performance BT (back thinned) cooled CCD, the system has ultra-high sensitivity.
- The power source meter (KEITHLEY 2400) is fully software controlled.
- Easy to handle intuitive software for measuring, calculating and controlling the system.
- Possibility of plotting different variables in several graphs (current, current density, voltage, luminous efficiency, chromaticity, etc.).
- The system can be easily extended to absolute PL quantum yield measurement and external quantum efficiency measurement systems.

Specifications

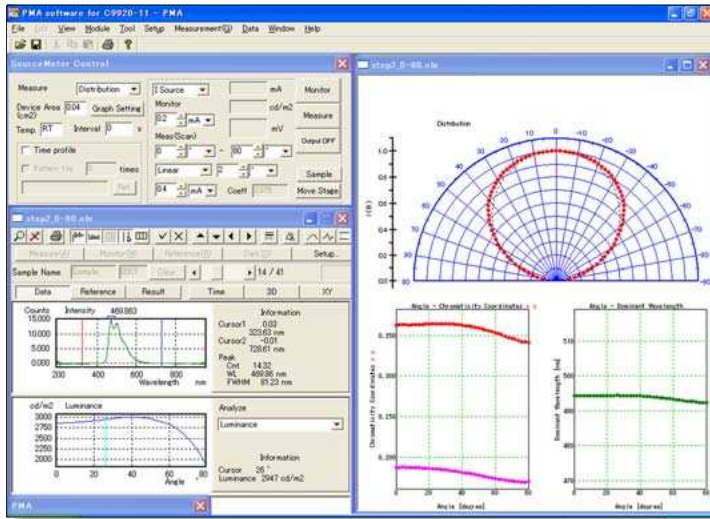
Rotating stage	Minimum angle setting 1°
Angle setting range	0° to 80°, -80° to 80°
Minimum step setting	1°
Resolution	0.1° or less
Detector	BT(back thinned) cooled CCD
Cooling temperature (CCD)	-15 °C
No. of photosensitive device channels	1024 ch
Wavelength measurement range	380 nm to 780 nm (detector: 200 nm to 950 nm)
Fiber probe	1.5 m
Measurement spot size	200 μm
Range for brightness measurements	10 cd/m ² to 10 000 cd/m ²

Simple and intuitive handling is realized through the dedicated analysis software.

The software provides two measurement modes for brightness and light distribution and luminous efficiency. Measurement conditions like minimum and maximum current/voltage, step width etc. are defined in one section of the screen. The raw data , e.g. the emission spectrum are shown below. The main screen monitors the measurement and displays the graphs defined before by the user. It is possible to display several graphs with different axis.

Two Measurement Modes

Light distribution measurement

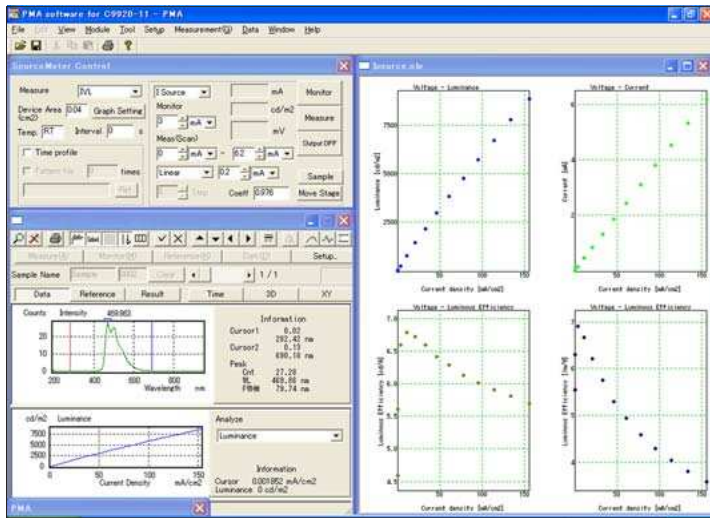


Graph Display

Results can be depicted in various graph formats. Current density can be replaced by voltage.

- Current density / Luminance (cd/m²)
- Current density / Luminous efficiency (lm/W)
- Current density / Luminous efficiency (cd/A)
- Current density / Chromaticity coordinates(x, y)
- Current density / Voltage
- Current density / External quantum efficiency
- Current density / Emission spectrum
- Time / Chromaticity coordinates (x, y)
- Time / Emission spectrum
- Time / Current (voltage)

Luminous efficiency measurement



Specifications

- Windows XP
- Standard PC with 4 USB ports and 1 RS232C(9 pins)
- Dongle protected.
- Respective calibration files

The luminous efficiency is calculated using the Lambertian assumption. It can be corrected by the emission angle distribution characteristics.

Luminous efficiency of an OLED device. Courtesy of Prof. Kido laboratory, Yamagata University.

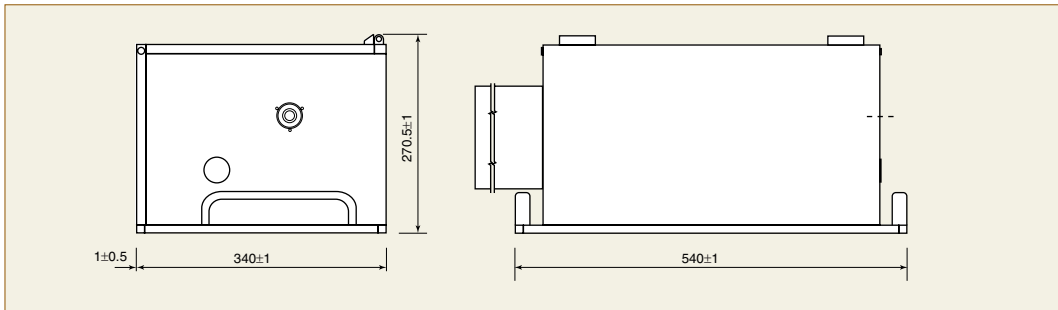
A wide variety of applications can be met by adding optional parts and components.

Options



Sample holder for brightness measurements (Pin Type) A9924-03. Alternate sample holder to the standard crocodile clamp type. It can be specially adapted to your devices.

Dimensional Outlines

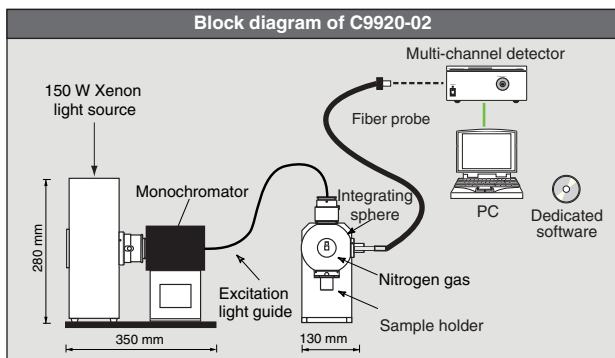


Related Products

The C9920 series offers various possibilities for combined configurations and easy upgrades to following products.

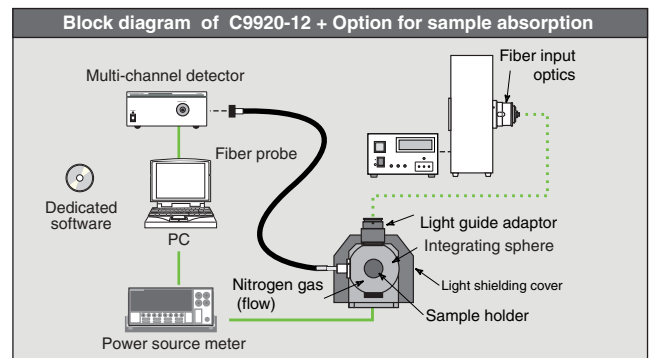
Absolute Quantum Yield Measurement System C9920-02,-03

These systems employ the PL method for measuring absolute fluorescence or photo-luminescence quantum yields for liquid samples, powders and thin films. As this is not a relative method no reference samples are necessary. The excitation wavelength is selected from the output of a 150W Xenon lamp.



External Quantum Efficiency Measurement System C9920-12

Highly precise measurements of emission efficiency do not depend on the emission angle distribution characteristics when using an integrating sphere. The C9920-12 allows for measurements of emission versus applied current as well as detecting effects like absorption of the light emitting part and glass substrate, reflective mirror efficiency, etc.



Product and software package names noted in this documentation are trademarks or registered trademarks of their respective manufacturers.

- Subject to local technical requirements and regulations, availability of products included in this promotional material may vary. Please consult your local sales representative.
- Information furnished by HAMAMATSU is believed to be reliable. However, no responsibility is assumed for possible inaccuracies or omissions. Specifications and external appearance are subject to change without notice.

© 2008 Hamamatsu Photonics K.K.

HAMAMATSU PHOTONICS K.K. www.hamamatsu.com

HAMAMATSU PHOTONICS K.K., Systems Division

812 Joko-cho, Higashi-ku, Hamamatsu City, 431-3196, Japan, Telephone: (81)53-431-0124, Fax: (81)53-435-1574, E-mail: export@sys.hpk.co.jp

U.S.A.: Hamamatsu Corporation: 360 Foothill Road, P. O. Box 6910, Bridgewater, N.J. 08807-0910, U.S.A., Telephone: (1)908-231-0960, Fax: (1)908-231-1218 E-mail: usa@hamamatsu.com

Germany: Hamamatsu Photonics Deutschland GmbH: Arzbergerstr. 10, D-82211 Herrsching am Ammersee, Germany, Telephone: (49)8152-375-0, Fax: (49)8152-2658 E-mail: info@hamamatsu.de

France: Hamamatsu Photonics France S.A.R.L.: 19, Rue du Saule Trapu, Parc du Moulin de Massy, 91882 Massy Cedex, France, Telephone: (33)1 69 53 71 00, Fax: (33)1 69 53 71 10 E-mail: infos@hamamatsu.fr

United Kingdom: Hamamatsu Photonics UK Limited: 2 Howard Court, 10 Tewin Road Welwyn Garden City Hertfordshire AL7 1BW, United Kingdom, Telephone: 44-(0)1707-294888, Fax: 44(0)1707-325777 E-mail: info@hamamatsu.co.uk

North Europe: Hamamatsu Photonics Norden AB: Thorshamnsgatan 35 SE-164 40 Kista, Sweden, Telephone: (46)8-509-031-00, Fax: (46)8-509-031-01 E-mail: info@hamamatsu.se

Italy: Hamamatsu Photonics Italia: S.R.L.: Strada della Moia, 1/E, 20020 Arese, (Milano), Italy, Telephone: (39)02-935 81 733, Fax: (39)02-935 81 741 E-mail: info@hamamatsu.it

China: Hamamatsu Photonics (China) Co., Ltd.: 1201 Tower B, Jiaming Center, 27 Dongsanhuan Road North, Chaoyang District, Beijing 100020, China, Telephone: (86)10-6586-6006, Fax: (86)10-6586-2866 E-mail: hpc@hamamatsu.com.cn