

# Camera Controller C2741-62

## Camera Controller for CCD Video Camera

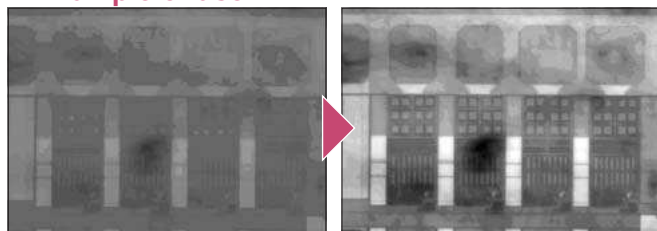


The C2741-62 is a compact and high-performance camera controller designed for CCD video cameras. Its most significant feature is the high image-processing ability. Its exceptional functions such as contrast enhancement, detail enhancement and averaging, which reduce noise on an image, contribute greatly for viewing low contrast objects clearly and more emphasized with easy control. It also provides shading correction. This function enables to correct shading, which is caused by light source and other optics.

### FEATURES

- **Clear and emphasized output image of CCD video camera by easy operation**
- **Variety of features such as contrast enhancement, detail enhancement, averaging and shading correction.**

### Example of use



▲ Before contrast enhancement    ▲ After contrast enhancement

### FUNCTIONS

#### ● **Contrast Enhancement**

The contrast enhancement function amplifies video signals that are above offset (threshold) level. Using this function, even very low contrast image can be changed into a clear image.

#### ● **Auto Contrast Enhancement**

When input light intensity is detected, an amplifier gain is adjusted automatically, and the contrast of image is kept constant.

#### ● **Shading Correction**

This function corrects shading caused by the optics such as light source and lenses. It enables horizontal and vertical correction as well as diagonal correction.

#### ● **Averaging Function**

This function averages an image data to reduce random noise and creates high-grade image.

#### ● **Detail Enhancement**

This function enhances edges of objects and intensity transitions. It dramatically improves the performance to display a vague image in detail.

#### ● **Gamma Correction**

Gamma Correction enables to modify the captured image data to display it more naturally and lower contrast portions clearly.

#### ● **Versatile interface of RS-232C**

#### ● **Level Indicators**

Two indicators which appear on the lower left corner of the monitor, indicates the appropriateness of incoming light volume. These indicators contribute to easy operation of brightness adjustment and help to display optimal image. In addition to the explanation above, this feature provides a visual notice to avoid excessive incoming of light, which may damage the camera.

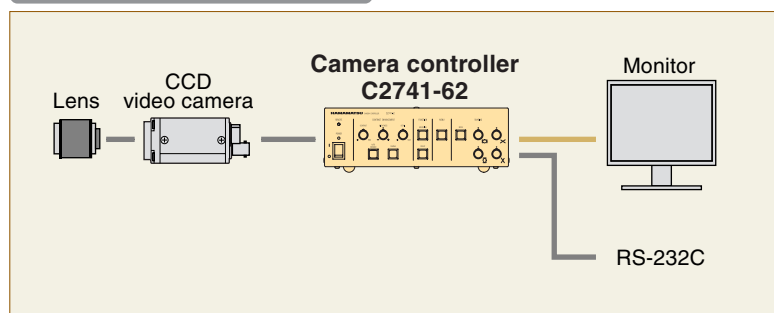
#### ● **Video Inverter**

This function inverts black and white of the image by reversing the video intensity values. It is used when the target object is concentrated in the dark portion of the image, rather than in the bright areas. It is more effective when the contrast enhancement is used simultaneously with this video inverter function.

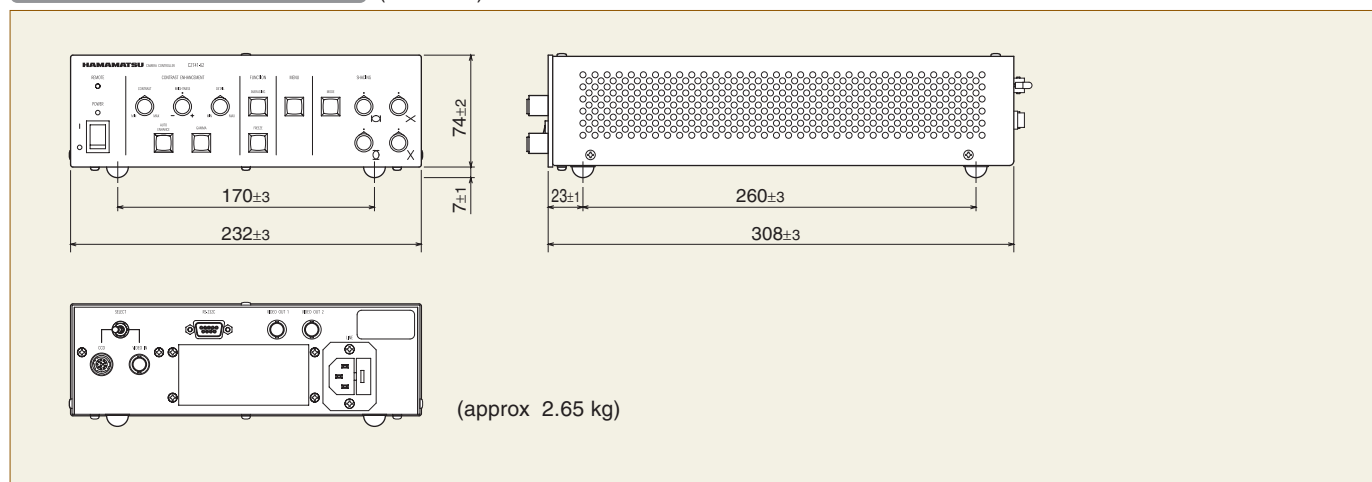
## SPECIFICATIONS

Synchronization system (selectable by software)	NTSC	CCIR
Output signal	15.734 kHz / 59.94 Hz	15.625 kHz / 50.00 Hz
	1 V p-p / 75 Ω 2 output terminals (BNC)	
Interface	2:1	
Aspect ratio	4:3 (Horizontal : Vertical)	
Input signal	Composite video signal (1 V p-p / 75 Ω BNC or 12 pin)	
Operating temperature	0 °C to 40 °C	
Operating humidity	20 % to 80 % (Non-Condensing)	
Storage temperature	-10 °C to 50 °C	
Storage humidity	20 % to 80 % (Non-Condensing)	
Power voltage	AC 100 V to 240 V, 50 Hz / 60 Hz	
Power consumption	60 VA or less	

## SYSTEM CONFIGURATION



## DIMENSIONAL OUTLINES (Unit : mm)



★ Product and software package names noted in this documentation are trademarks or registered trademarks of their respective manufacturers.

- Subject to local technical requirements and regulations, availability of products included in this promotional material may vary. Please consult your local sales representative.
- Information furnished by HAMAMATSU is believed to be reliable. However, no responsibility is assumed for possible inaccuracies or omissions. Specifications and external appearance are subject to change without notice.

© 2012 Hamamatsu Photonics K.K.

## HAMAMATSU PHOTONICS K.K. [www.hamamatsu.com](http://www.hamamatsu.com)

HAMAMATSU PHOTONICS K.K., Systems Division

812 Joko-cho, Higashi-ku, Hamamatsu City, 431-3196, Japan, Telephone: (81)53-431-0124, Fax: (81)53-435-1574, E-mail: [export@sys.hpk.co.jp](mailto:export@sys.hpk.co.jp)

U.S.A.: Hamamatsu Corporation: 360 Foothill Road, P. O. Box 6910, Bridgewater, N.J. 08807-0910, U.S.A., Telephone: (1)908-231-0960, Fax: (1)908-231-1218 E-mail: [usa@hamamatsu.com](mailto:usa@hamamatsu.com)

Germany: Hamamatsu Photonics Deutschland GmbH: Arzbergerstr. 10, D-82211 Herrsching am Ammersee, Germany, Telephone: (49)8152-375-0, Fax: (49)8152-2658 E-mail: [info@hamamatsu.de](mailto:info@hamamatsu.de)

France: Hamamatsu Photonics France S.A.R.L.: 19, Rue du Saule Trapu, Parc du Moulin de Massy, 91882 Massy Cedex, France, Telephone: (33)1 69 53 71 00, Fax: (33)1 69 53 71 10 E-mail: [infos@hamamatsu.fr](mailto:infos@hamamatsu.fr)

United Kingdom: Hamamatsu Photonics UK Limited: 2 Howard Court, 10 Tewin Road Welwyn Garden City Hertfordshire AL7 1BW, United Kingdom, Telephone: 44-(0)1707-294888, Fax: 44(0)1707-325777 E-mail: [info@hamamatsu.co.uk](mailto:info@hamamatsu.co.uk)

North Europe: Hamamatsu Photonics Norden AB: Thorshamnsgatan 35 SE-164 40 Kista, Sweden, Telephone: (46)8-509-031-00, Fax: (46)8-509-031-01 E-mail: [info@hamamatsu.se](mailto:info@hamamatsu.se)

Italy: Hamamatsu Photonics Italia: S.R.L.: Strada della Moia, 1/E, 20020 Arese, (Milano), Italy, Telephone: (39)02-935 81 733, Fax: (39)02-935 81 741 E-mail: [info@hamamatsu.it](mailto:info@hamamatsu.it)

China: Hamamatsu Photonics (China) Co., Ltd.: 1201 Tower B, Jiaming Center, 27 Dongsanhuan Road North, Chaoyang District, Beijing 100020, China, Telephone: (86)10-6586-6006, Fax: (86)10-6586-2866 E-mail: [hpc@hamamatsu.com.cn](mailto:hpc@hamamatsu.com.cn)

Cat. No. SCAS0037E03

NOV/2012 HPK

Created in Japan