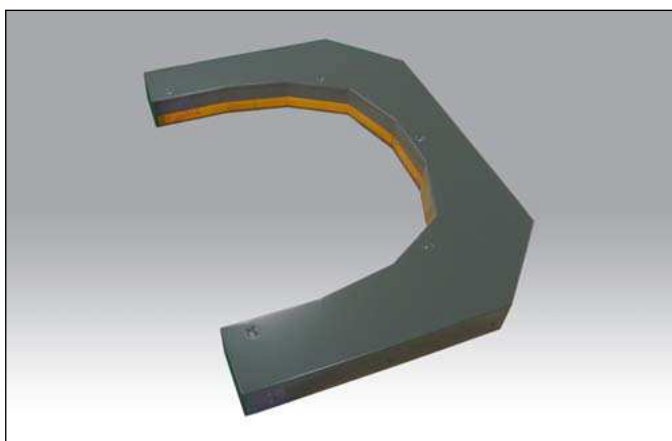


## Nondestructive X-ray inspection

### C-shaped X-ray Line Scan Camera

# C9750-27FCC,-27FCD



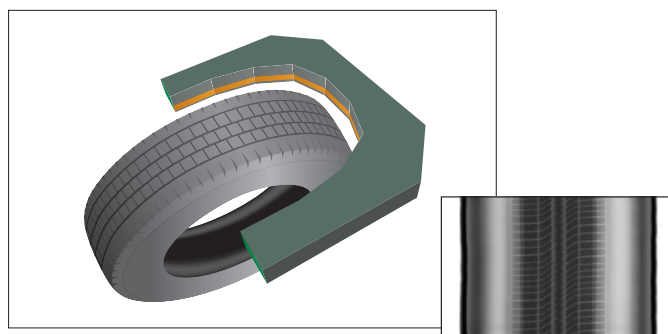
The C-shaped X-ray Line Scan Camera is to meet the demands in the tire inspection. It is based on the Hamamatsu C9750 Series X-ray line Scan Camera technologies, and it offers an image of 3456 pixels resolution horizontally with no gap (<1 pixel) for whole effective area while the tire rotate one revolution.

The high sensitivity and wide intensity dynamic range provide fast and excellent detectability for reliable inspection.

## FEATURES

- Sensitivity range : 25 kV to 160 kV
- Pixel pitch : 0.4 mm
- Line speeds : 4 m/min. to 36 m/min.
- A/D conversion : 12 bit
- RS-422·Camera link (Option)

## EXAMPLE OF USAGE



▲ Sample image

## SPECIFICATIONS

Type number		C9750-27FCC, -27FCD <sup>①</sup>	
Detection method		Scintillator method	
Scintillator		Gd-scintillator	
X-ray sensitivity range		Approx. 25 kV to 160 kV	
X-ray tolerance range <sup>②</sup>		160 kV, 500 W max.	
Pixel pitch		0.4 mm	
Detection widths		1382.4 mm, 3456 pixel	
Applicable line speeds <sup>③</sup>		4 m/min to 36 m/min. (0.167 kHz to 1.500 kHz) (PCL5.33 MHz)	
A/D conversion		12 bit	
Digital interface <sup>④</sup>		RS-422 (standard)	
External control		RS-232C	
Output signals	Image data	12 bit digital output	RS-422
	Synchronization signal	VALID signals	RS-422
		CLK signal (5.33 MHz) <sup>⑤</sup>	RS-422
Power supply <sup>⑤</sup>		DC+15 V / DC-15 V / DC+5 V	
Operating temperature		0 °C to +40 °C	
Storage temperature		-10 °C to +50 °C	
Humidity range		30 % to 80 % (with no condensation)	

① The difference of C9750-27FCC and C9750-27FCD depends on the location of connectors.

② When irradiating more than 160 kV, it is necessary to put additional Pb plate to protect circuits. Please contact hamamatsu subsidiary or local distributor.

③ Even when conveyor speed becomes faster than the line speed the detection can be done.\*OPTION : 4 m/min. to 54 m/min.(0.167 kHz to 2.292 kHz) (PCL8.0 MHz)

④ Camera Link interface (M10389-01) is available as option.

When X64 or Xcelera is used the M10389-01A is necessary as option. (CLK signal: 20 MHz)

⑤ AC adapter (A8206-21) is available as option.

# HAMAMATSU

●



●



- ★

©



<http://www.hamamatsu.com>

HAMAMATSU PHOTONICS K.K., Systems Division

U.S.A. and Canada: Hamamatsu Corporation: 360 Foothill Road, Bridgewater, N.J. 08807-0910, U.S.A., Telephone: (1) 908-231-0960, Fax: (1)908-231-0852, E-mail: [usa@hamamatsu.com](mailto:usa@hamamatsu.com)

Germany: Hamamatsu Photonics Deutschland GmbH: Arzbergerstr. 10, D-82211 Herrsching am Ammersee, Germany, Telephone: (49)8152-375-0, Fax: (49)8152-2658, E-mail: [info@hamamatsu.de](mailto:info@hamamatsu.de)

France: Hamamatsu Photonics France S.A.R.L.: 19, Rue du Saule Trapu, Parc du Moulin de Massy, 91882 Massy Cedex, France, Telephone: (33)1 69 53 71 00, Fax: (33)1 69 53 71 10, E-mail: [infos@hamamatsu.fr](mailto:infos@hamamatsu.fr)

**United Kingdom:** Hamamatsu Photonics UK Limited: 2 Howard Court, 10 Tewin Road, Welwyn Garden City, Hertfordshire, AL7 1BW, U.K., Telephone: (44) 1707-294888, Fax: (44) 1707-325777, E-mail: [info@hamamatsu.co.uk](mailto:info@hamamatsu.co.uk)

*North Europe:* Hamamatsu Photonics Norden AB: Smidesvägen 12, SE-171-41 Solna, Sweden, Telephone: (46)8-509-031-00, Fax: (46)8-509-031-01, E-mail: [info@hamamatsu.se](mailto:info@hamamatsu.se)

Italy: Hamamatsu Photonics Italia S.R.L.: Strada della Moia, 1/E 20020 Arese (Milano), Italy, Telephone: (39)02-935 81 733, Fax: (39)02-935 81 741, E-mail: info@hamamatsu.it

Cat. No. SFAS0021E03

APR/2009 HPK

Created in Japan