

# Housings, Flange

## Housing E1341-01/-02



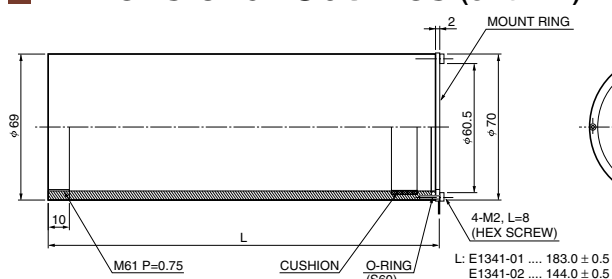
TACCF0177

The E1341-01/-02 are metal housings designed for the D-type socket assembly E5859 series (for 51 mm diameter head-on photomultiplier tubes; see page 101) operated at room temperature. To install the E5859 series socket assembly into the E1341-01/-02 and to ensure complete light-shielding, a magnetic shield case E989-62/-68 (sold separately) is required.

The E1341-01/-02 housings can be easily attached to a monochromator by preparing a simple adapter.

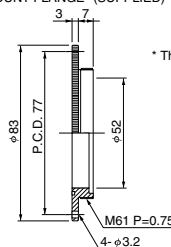
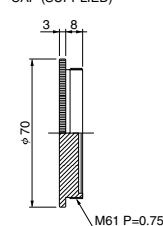
Type No.	Suitable Photomultiplier Tube	Magnetic Shield Case
E1341-01	R464, R649, R329-02, etc.	E989-62
E1341-02	R943-02	E989-68

### Dimensional Outlines (Unit: mm)



CAP (SUPPLIED)

MOUNT FLANGE\* (SUPPLIED)

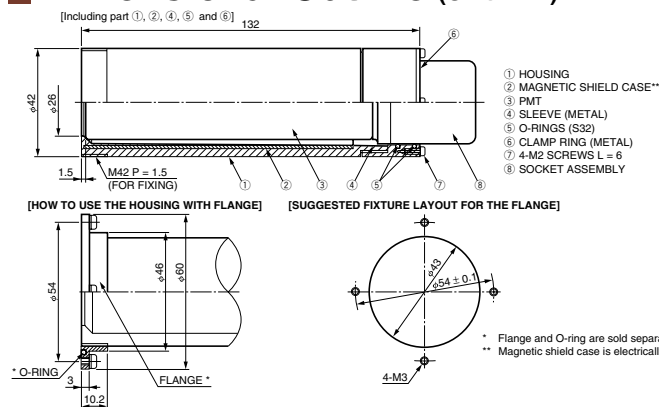


\* The O-ring (S56) is supplied.

TACCA0228EB

## Housing E7718

### Dimensional Outline (Unit: mm)



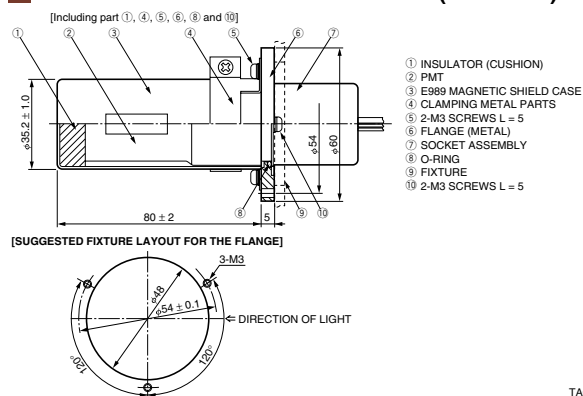
The E7718 housing contains a magnetic shield case and is designed for use with 28 mm diameter head-on photomultiplier tubes. It can be easily attached to another device by connecting the A7719 flange (sold separately).

Suitable PMT	Suitable Socket Assembly	
R374, R2228, R5929	DA type	C7246/-22, C7247/-22
R6094, R6095, etc.	DP type	C9028-01, C10344-03
	DAP type	C7950-01

TACCA0198EB

## Flange A7709

### Dimensional Outline (Unit: mm)



The A7709 is a flange for 28 mm diameter side-on photomultiplier tubes and is designed for use in combination with the E989 magnetic shield case (sold separately). It allows a photomultiplier tube to be integrated with a socket assembly.

Suitable PMT	Suitable Socket Assembly	
φ28 mm	D type	E717-63/-500
Side-on type	DA type	C7246-01/-23, C7247-01/-23
	DP type	C8991
	DAP type	C7950

\* A7708 dedicated flange is provided for C6270 and C6271.

TACCA0199EB

# Power and Signal Cables, Connector Adapters

## Power and Signal Cables E1168 Series, Connector Adapters A4184 Series

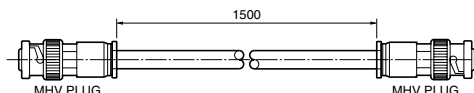


TACCF0153

Hamamatsu offers the E1168 series cables for connection of photomultiplier tube assemblies and their accessories. A variety of cables are available, for handling high voltage, low voltage and signals. In addition, Hamamatsu also provides the A4184 series connector adapters designed for SHV/MHV connector conversion.

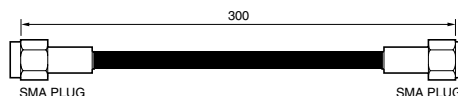
### Dimensional Outlines (Unit: mm)

E1168 Series



TACCA0141EA

A5026 Series



TACCA0052EA

## Selection Guide

### ● For High Voltage

Type No.	Cable Type	Cable Diameter	Maximum Voltage	Connector Types
E1168	RG-59B/U (Red)	$\phi 6.2$ mm	2.3 kV Max.	MHV Plug—MHV Plug
E1168-10				MHV Plug—SHV Plug
E1168-17				SHV Plug—SHV Plug
E1168-18	Custom High Voltage Cable (Red)	$\phi 6.15$ mm $\pm 0.3$ mm	5 kV Max.	MHV Plug—MHV Plug
E1168-19				SHV Plug—SHV Plug
E1168-20				MHV Plug—SHV Plug

### ● For Low Voltage

Type No.	Cable Type	Connector Types
E1168-24	Multiconductor Cable with Shield	SR30-10PQ-4P—DIN6P Plug
E1168-26		DIN6P Plug—DIN6P Plug

### ● For Signal

Type No.	Cable Type	Impedance	Connector Types
E1168-01	3D-2V	50 $\Omega$	N Plug—N Plug
E1168-02			N Plug—BNC Plug
E1168-03	3C-2V	75 $\Omega$	BNC Plug—BNC Plug
E1168-05	3D-2V	50 $\Omega$	BNC Plug—BNC Plug
A5026	SPECIAL COAXIAL CABLE	50 $\Omega$	SMA Plug—SMA Plug
A5026-01			SMA Plug—SMA Jack

### ● Connector Adapters

Type No.	Connector Types
A4184-02	MHV Plug—SHV Jack
A4184-03	SHV Plug—MHV Jack

### ● Relay Adapters

Type No.	Connector Types
A5074	SHV Jack—SHV Jack
A7992	BNC Jack—BNC Jack