

Silicon Doubled Balanced HMIC Mixer 1700 - 2500 MHZ

Rev. V2

Features

- Low Cost Miniature Plastic Package
- 5.5 dB Typical Conversion Loss at 2100 MHz
- 6.7 dB Typical Conversion Loss at 2500 MHz
- +7 to +13 dBm LO Drive
- HMIC™ Process
- Silicon Medium Barrier Schottky Diodes
- DC - 500 MHz IF Bandwidth
- RoHS* Compliant with 260 °C Reflow Capability
- 100% Matte Tin Plating

Description and Applications

M/A-COM's MAMX-000240-1225MT is a silicon monolithic 1700-2500 MHz double balanced mixer in a low cost miniature surface mount SOT-25 package. The die uses M/A-COM's unique HMIC™ silicon/glass process to achieve low loss passive elements while retaining the advantages of medium barrier silicon Schottky diodes.

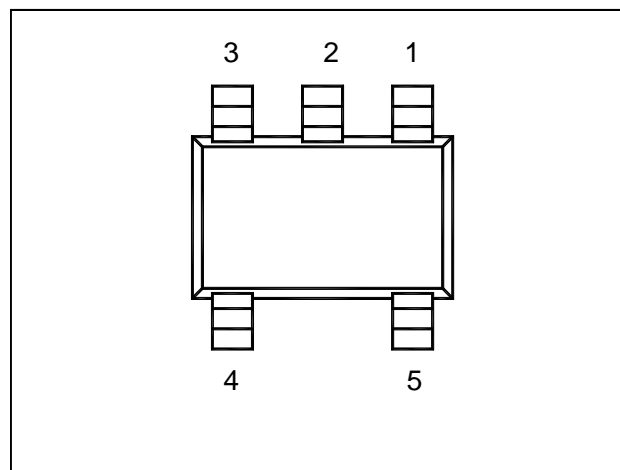
These mixers are well suited for high volume WLAN and cellular applications where small size and repeatability are required. Typical applications include frequency conversion, modulation, and demodulation for receivers and transmitters in both portable cellular and base station applications.

Absolute Maximum Ratings¹

Parameter	Maximum Ratings
Operating Temperature	-40 °C to +85 °C
Storage Temperature	-65 °C to +150 °C
Incident LO Power	+20 dBm
Incident RF Power	+20 dBm
Soldering Temperature	+260 °C max.

1. Exceeding these limits may cause permanent damage.

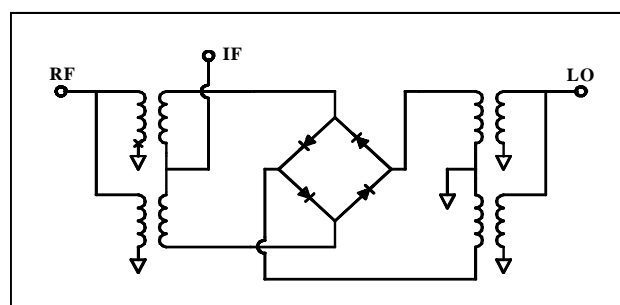
Package Outline



PIN Configuration

PIN	Function	PIN	Function
1	GND	4	RF
2	GND	5	LO
3	IF		

Functional Schematic



* Restrictions on Hazardous Substances, European Union Directive 2002/95/EC.

ADVANCED: Data Sheets contain information regarding a product M/A-COM Technology Solutions is considering for development. Performance is based on target specifications, simulated results, and/or prototype measurements. Commitment to develop is not guaranteed.

PRELIMINARY: Data Sheets contain information regarding a product M/A-COM Technology Solutions has under development. Performance is based on engineering tests. Specifications are typical. Mechanical outline has been fixed. Engineering samples and/or test data may be available. Commitment to produce in volume is not guaranteed.

- **North America** Tel: 800.366.2266 / Fax: 978.366.2266
- **Europe** Tel: 44.1908.574.200 / Fax: 44.1908.574.300
- **Asia/Pacific** Tel: 81.44.844.8296 / Fax: 81.44.844.8298

Visit www.macomtech.com for additional data sheets and product information.

M/A-COM Technology Solutions Inc. and its affiliates reserve the right to make changes to the product(s) or information contained herein without notice.

Silicon Doubled Balanced HMIC Mixer 1700 - 2500 MHz

Rev. V2

Electrical Specifications @ +25 °C

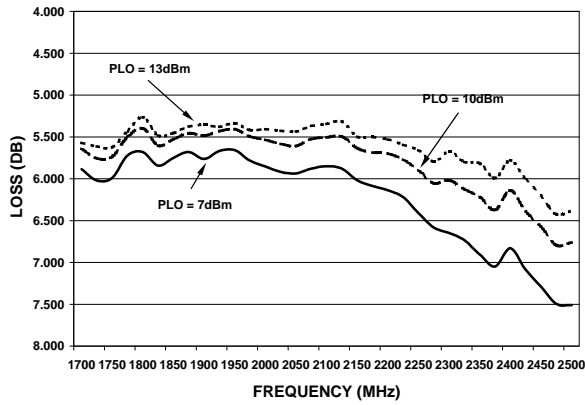
Parameter	Frequency Range	Test Conditions	Units	Min.	Typ.	Max.
Conversion Loss	2100 MHz 1700-2500 MHz	LO Drive = +10 dBm RF = -10 dBm, IF = 60 MHz	dB dB		5.5 6.2	6.0 7.5
L - R Isolation	2100 MHz 1700-2500 MHz	LO Drive = +10 dBm RF Level = -10 dBm	dB dB		17.0 16.0	
L - I Isolation	2100 MHz 1700-2500 MHz	LO Drive = +10 dBm RF Level = -10 dBm	dB dB		22.0 22.0	
R - I Isolation	2100 MHz 1700-2500 MHz	LO Drive = +10 dBm RF Level = -10 dBm	dB dB		12.0 13.0	
LO VSWR	2100 MHz 1700-2500 MHz	LO Drive = +10 dBm			2.3:1 2.5:1	
RF VSWR	2100 MHz 1700-2500 MHz	LO Drive = +10 dBm RF Level = -10 dBm			1.2:1 1.7:1	
IF VSWR	DC - 400 MHz	LO Drive = +10 dBm RF Level = -10 dBm			1.6:1	
Input IP3	2100 MHz 1700-2500 MHz	LO Drive = +10 dBm IF = 60 MHz	dBm dBm	16.0 12.0	18.0 15.5	
Input 1 dB Compression	2100 MHz 1700-2500 MHz	LO Drive = +10 dBm IF = 60 MHz	dBm dBm		5.3 6.0	
IF 1 dB Bandwidth			MHz	0		500.0

Silicon Doubled Balanced HMIC Mixer 1700 - 2500 MHZ

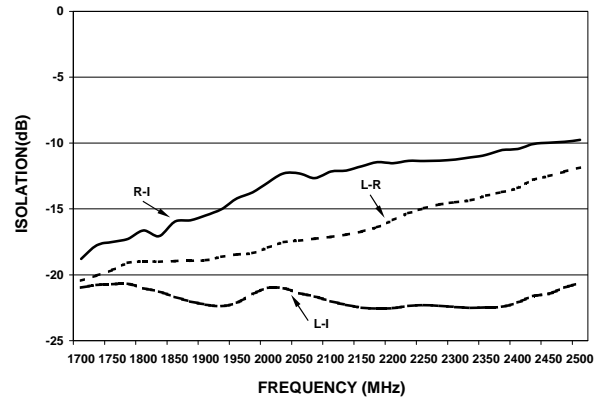
Rev. V2

Typical Performance Curves (LO Drive = +10 dBm, RF = -10 dBm, IF = 60 MHz)

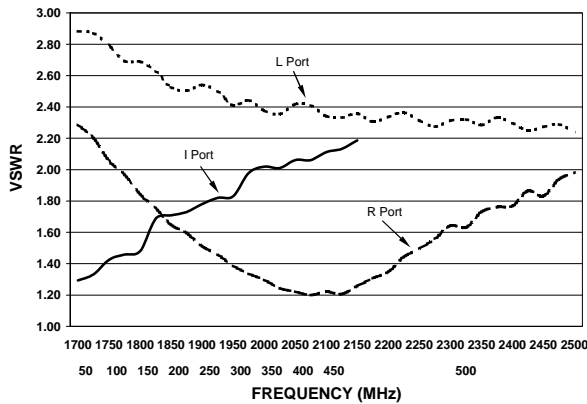
Conversion Loss



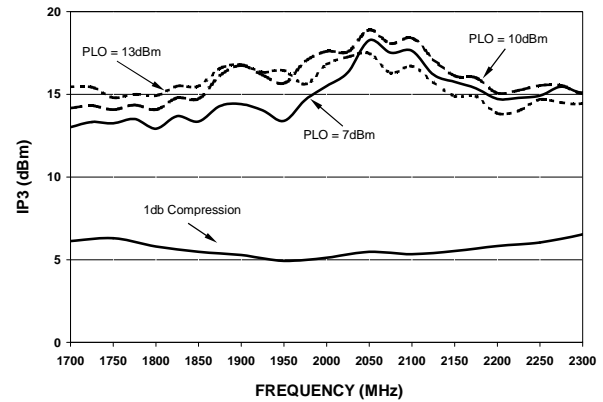
Isolation



VSWR



Input IP3 & 1 dB Compression Point



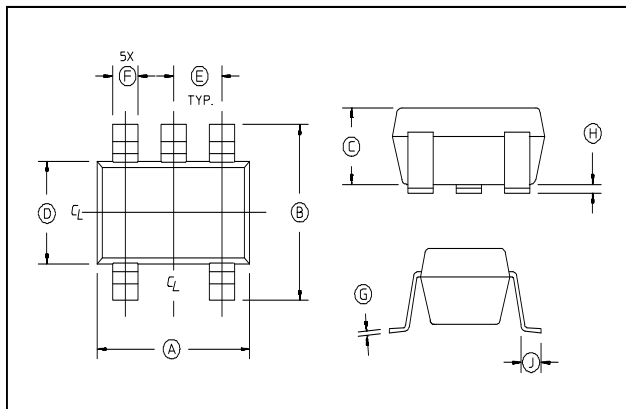
MAMX-000240-1225MT



Silicon Doubled Balanced HMIC Mixer
1700 - 2500 MHZ

Rev. V2

Case Style - SOT-25



SOT-25 Dimensions

Dim	Inches		Millimeters	
	Min.	Max.	Min.	Max.
A	.106	.122	2.70	3.10
B	.100	.118	2.54	3.00
C	—	.051	—	1.30
D	.063 REF.		1.60 REF.	
E	.032	.043	.80	1.10
F	.014	.020	.35	.50
G	.003	—	.08	—
H	.000	.006	.00	.15
J	.018 REF.		.45 REF.	

2. Leads Coplanarity should be 0.003 (0.08) max.

Ordering Information

Part Number	Package
MAMX-000240-1225MT	Tape and Reel

ADVANCED: Data Sheets contain information regarding a product M/A-COM Technology Solutions is considering for development. Performance is based on target specifications, simulated results, and/or prototype measurements. Commitment to develop is not guaranteed.
PRELIMINARY: Data Sheets contain information regarding a product M/A-COM Technology Solutions has under development. Performance is based on engineering tests. Specifications are typical. Mechanical outline has been fixed. Engineering samples and/or test data may be available. Commitment to produce in volume is not guaranteed.

- **North America** Tel: 800.366.2266 / Fax: 978.366.2266
 - **Europe** Tel: 44.1908.574.200 / Fax: 44.1908.574.300
 - **Asia/Pacific** Tel: 81.44.844.8296 / Fax: 81.44.844.8298
- Visit www.macomtech.com for additional data sheets and product information.

M/A-COM Technology Solutions Inc. and its affiliates reserve the right to make changes to the product(s) or information contained herein without notice.