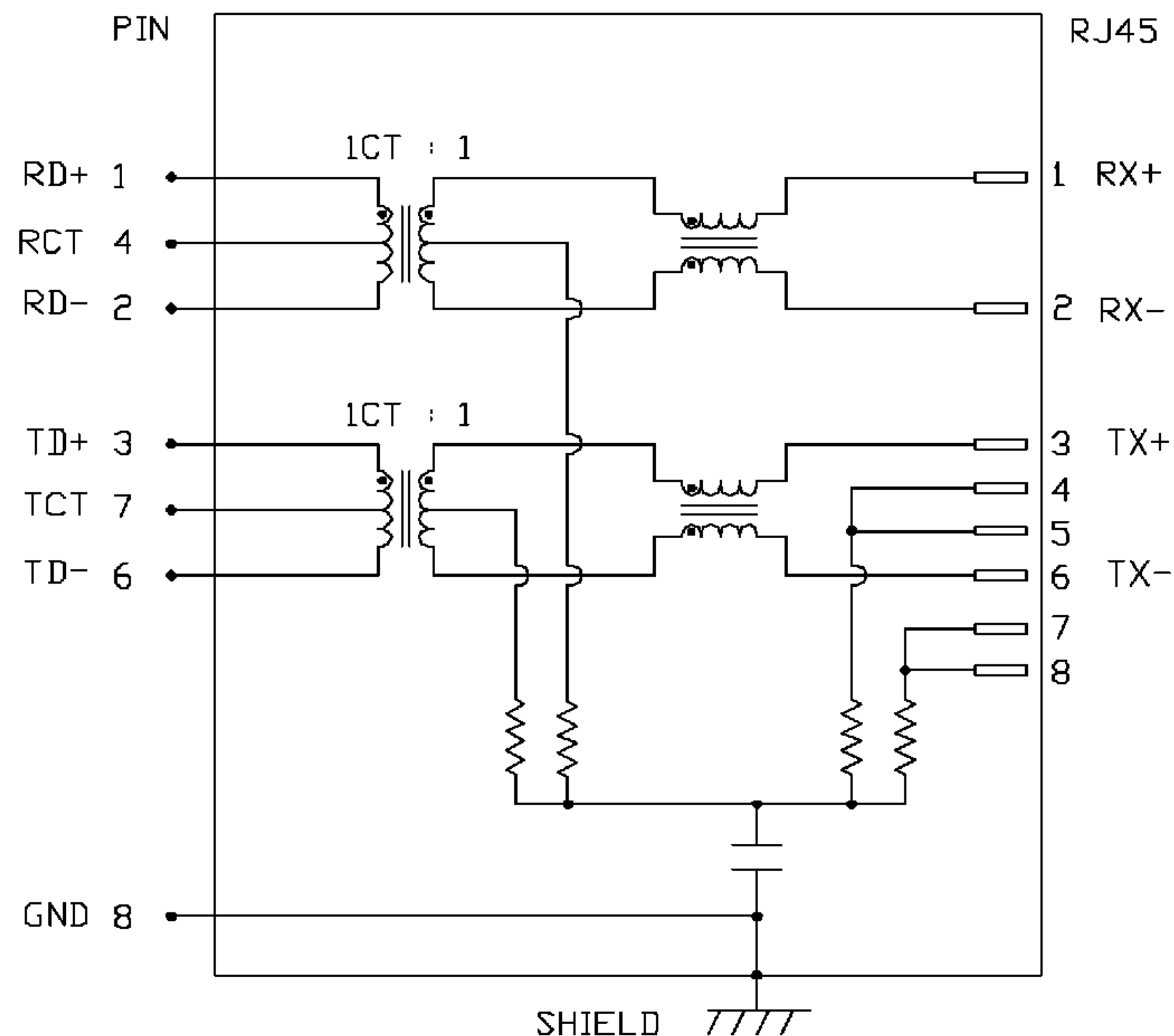


THE INFORMATION CONTAINED HEREIN IS CONSIDERED "PROPRIETARY" TO BEL FUSE INC. AND SHALL NOT BE COPIED, REPRODUCED OR DISCLOSED WITHOUT THE WRITTEN APPROVAL OF BEL FUSE INC.

ELECTRICAL CHARACTERISTICS @ 25°C

RETURN LOSS (MIN.)		
1MHz-30MHz	-18 dB	
60MHz-80MHz	-12 dB	
INSERTION LOSS		
100KHz TO 100MHz	-1.1 dB	
DCL @ 0.1V, 100KHz		
8mA DC BIAS	350μH MIN.	
TURNS RATIO	1CT : 1CT ±3%	
CM TO CM REJ		
100kHz - 100MHz	-35 dB MIN	
CM TO DM REJ		
100kHz - 100MHz	-40 dB MIN	
XTALK		
100KHz TO 100MHz	-35 dB MIN.	

SCHEMATIC



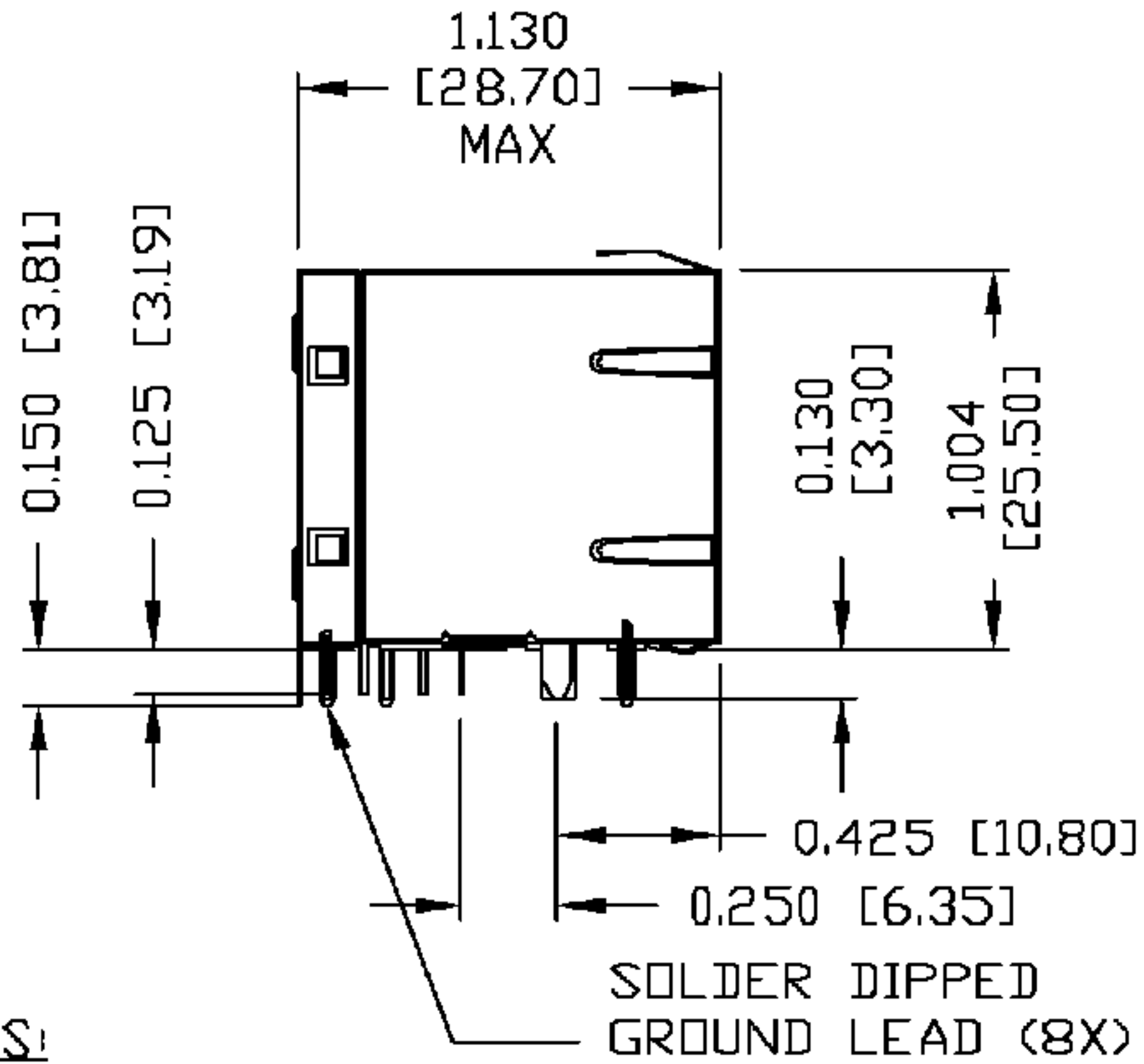
DRWN	DATE	TITLE
DE	12-12-04	2X8 MagJack™ (4 cores)
CHKD	DATE	
CHUNG	12-12-04	

PART NO. / DRAWING NO.	0811-2X8R-28
FILE NAME	08112X8R28C.DWG

STANDARD DIM.	[ ] METRIC DIM. AS REFERENCE
TOL. IN INCH	UNIT : INCH [mm] REV. : C
.X	SCALE : N/A SIZE : A4
.XX	⊕ --- PAGE : 2
.XXX	



THE INFORMATION CONTAINED HEREIN IS CONSIDERED "PROPRIETARY" TO BEL FUSE INC. AND SHALL NOT BE COPIED, REPRODUCED OR DISCLOSED WITHOUT THE WRITTEN APPROVAL OF BEL FUSE INC.

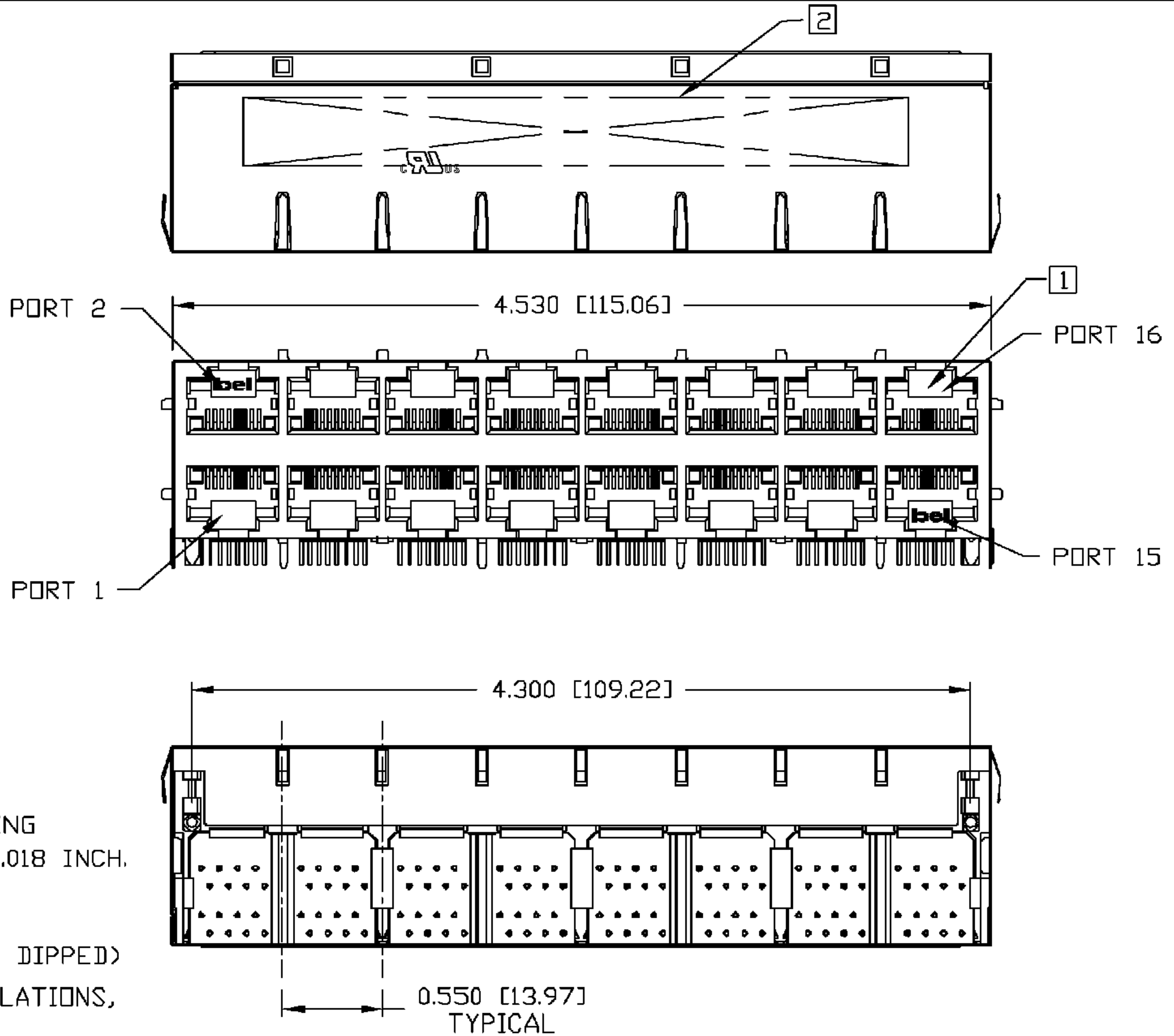



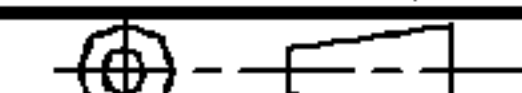
NOTES:

- PLASTIC HOUSING: THERMOPLASTIC PBT  
FLAMMABILITY RATING UL 94V-0
- CONTACT PLATING: 30 MICRO-INCH HARD GOLD PLATING
- OUTPUT PINS: TIN-COATED COPPER WIRE, DIA 0.018 INCH.
- SOLDERABILITY: PER MIL STD. 202, METHOD 208.
- METAL SHIELD: NICKEL PLATED COPPER ALLOY.  
(ALL GROUND LEADS ARE SOLDER DIPPED)

- 1] JACK CAVITY CONFORMS TO FCC RULES AND REGULATIONS, PART 68 SUBPART F.
- 2] MARKED PART WITH MFG. LOGO, MFG. NAME, PART NUMBER, DATE CODE.

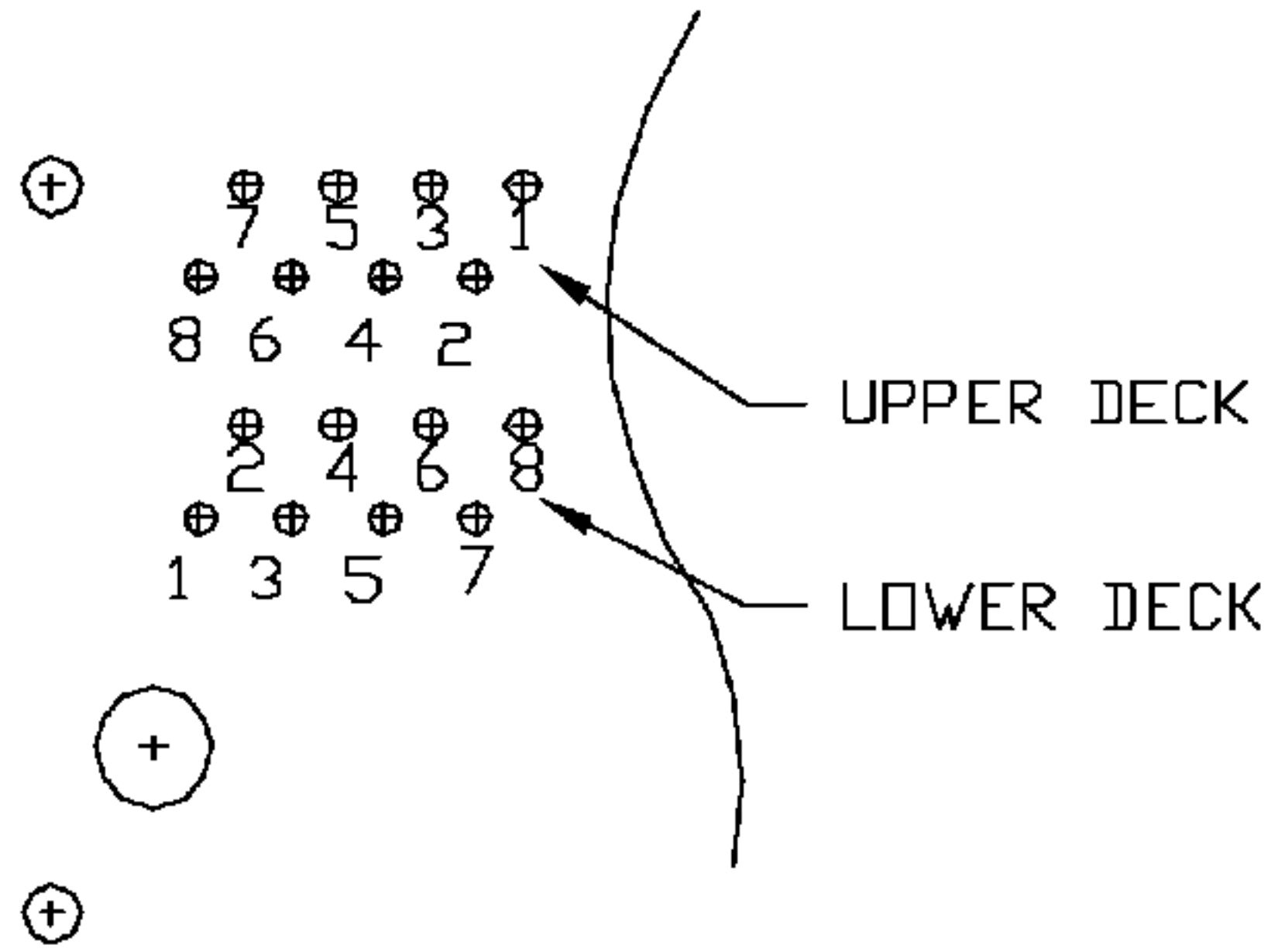
c  us UL RECOGNIZED - FILE #E196366 AND E169987.



DRWN	DATE	TITLE	PART NO. / DRAWING NO.	STANDARD DIM.	[ ] METRIC DIM. AS REFERENCE	
LING	12-12-04	2X8 MagJack™ (4 Cores)	0811-2X8R-28	TOL. IN INCH	UNIT : INCH [mm] REV. : C	
CHKD	DATE		FILE NAME	.X	SCALE : N/A SIZE : A4	
TAD/KEUNG	12-12-04		08112X8R28C.DWG	.XX	 PAGE : 3	
				.XXX	±0.010	

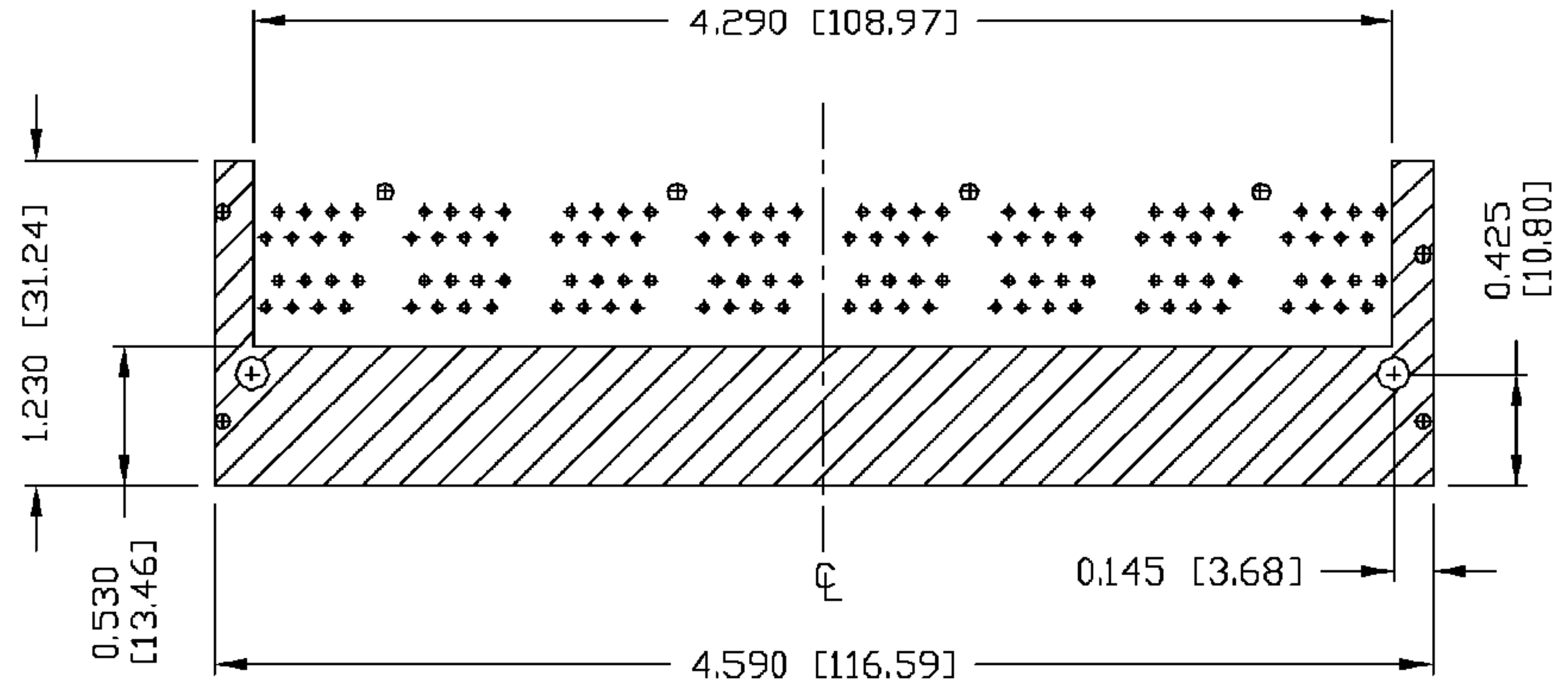
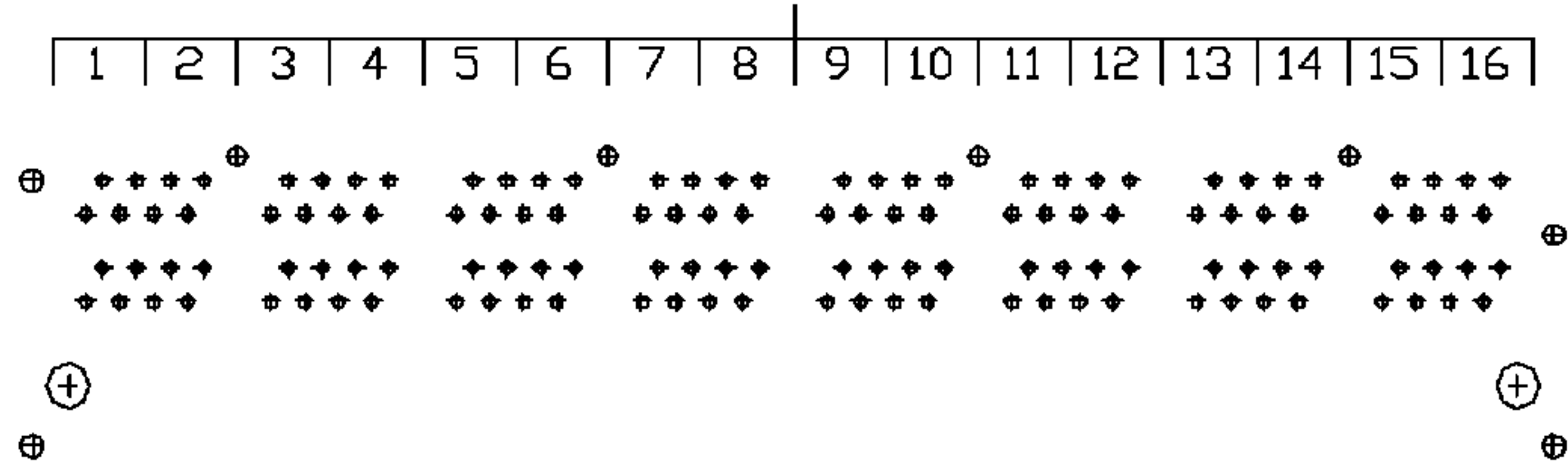
THE INFORMATION CONTAINED HEREIN IS CONSIDERED "PROPRIETARY" TO BEL FUSE INC. AND SHALL NOT BE COPIED, REPRODUCED OR DISCLOSED WITHOUT THE WRITTEN APPROVAL OF BEL FUSE INC.

PORT ASSIGNMENT  
(COMPONENT SIDE VIEW)



PIN-OUT INFORMATION  
(COMPONENT SIDE VIEW)

8	GND
7	TCT
6	TD-
5	NC
4	RCT
3	TD+
2	RD-
1	RD+



THE SHADED AREA OF BOTTOM SIDE OF PART

DRWN	DATE	TITLE
LING	12-12-04	2X8 MagJack™ (4 Cores)
CHKD	DATE	
TAD/KEUNG	12-12-04	

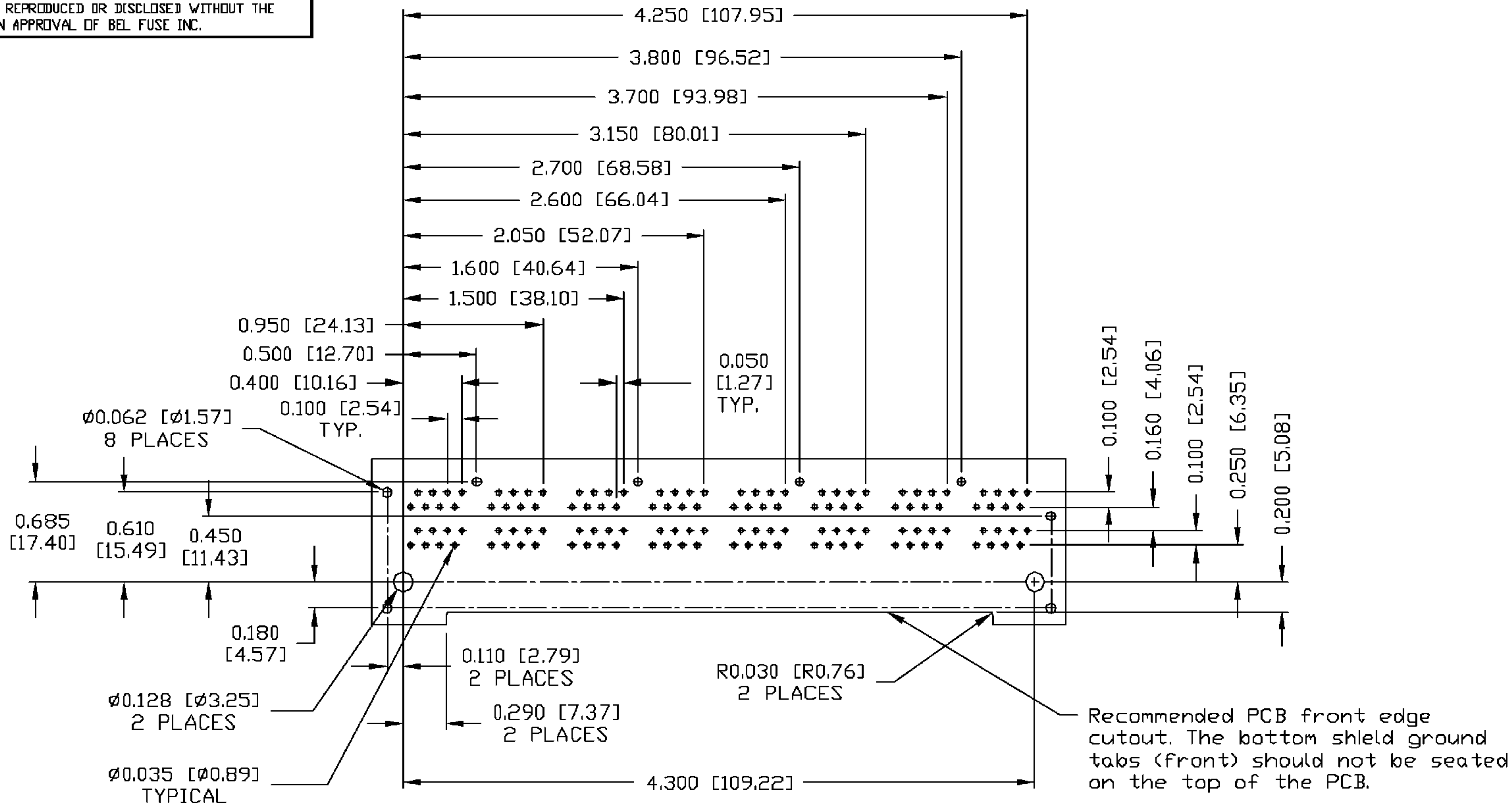
PART NO. / DRAWING NO.	0811-2X8R-28
FILE NAME	08112X8R28C.DWG

STANDARD DIM.	
TOL. IN INCH	
.X	
.XX	
.XXX	±0.010

[ ] METRIC DIM. AS REFERENCE	
UNIT : INCH [mm]	REV. : C
SCALE : N/A	SIZE : A4
	PAGE : 4



THE INFORMATION CONTAINED HEREIN IS CONSIDERED "PROPRIETARY" TO BEL FUSE INC. AND SHALL NOT BE COPIED, REPRODUCED OR DISCLOSED WITHOUT THE WRITTEN APPROVAL OF BEL FUSE INC.

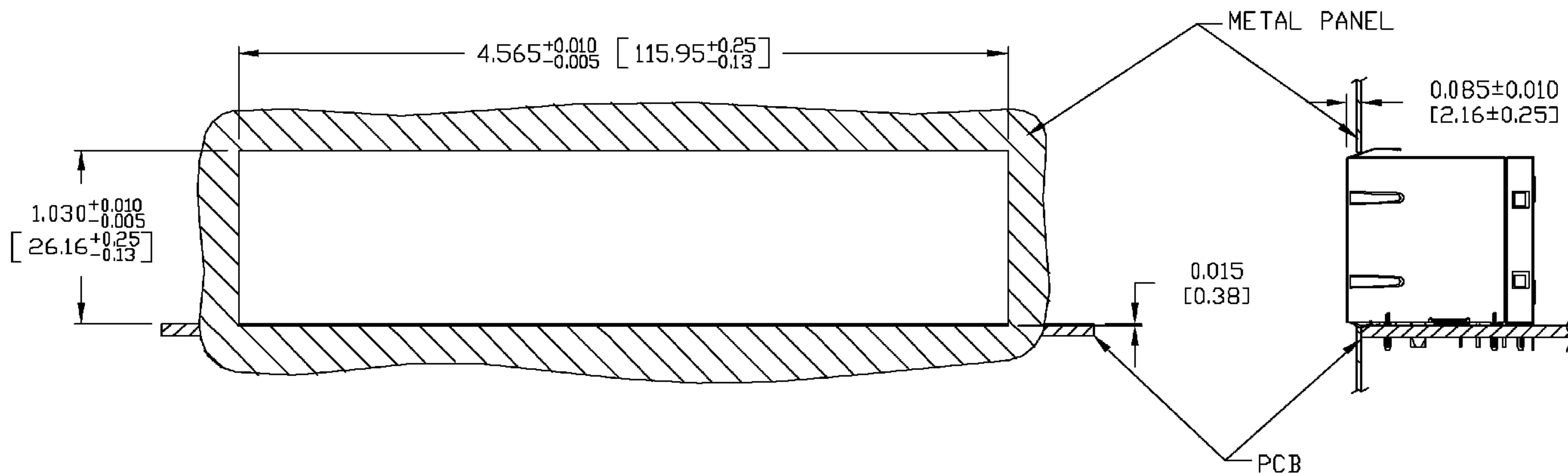


<b>DRWN</b> LING <b>DATE</b> 12-12-04 <b>TITLE</b> 2X8 MagJack™ (4 Cores)		<b>PART NO. / DRAWING NO.</b> 0811-2X8R-28 <b>FILE NAME</b> 08112X8R28C.DWG		<b>STANDARD DIM.</b> TOL. IN INCH .X .XX .XXX ±0.010	<b>[ ] METRIC DIM. AS REFERENCE</b> UNIT : INCH [mm] SCALE : N/A 	<b>REV. :</b> C <b>SIZE :</b> A4 <b>PAGE :</b> 5	
<b>CHKD</b> TAO/KEUNG <b>DATE</b> 12-12-04							

FORM NO. - ENG020B2001

THE INFORMATION CONTAINED HEREIN IS CONSIDERED "PROPRIETARY" TO BEL FUSE INC. AND SHALL NOT BE COPIED, REPRODUCED OR DISCLOSED WITHOUT THE WRITTEN APPROVAL OF BEL FUSE INC.

SUGGESTED PANEL OPENING



NOTE:

THE DISTANCE OF PANEL INSIDE SURFACE RELATIVE TO FRONT SURFACE OF PART IS ONLY A SUGGESTION. IN CASE THIS DISTANCE IS DIFFERENT, THE REQUIRED PANEL OPENING DIMENSIONS CHANGE ACCORDINGLY.

PACKING INFORMATION

PACKING TRAY : 0200-9999-B2 (TOP)  
0200-9999-B1 (BOTTOM)

PACKING QUANTITY : 10 PCS FINISHED GOODS PER TRAY  
7 TRAYS (70 PCS FINISHED GOODS) PER CARTON BOX

NOTE : CARDBOARDS ARE PLACED BETWEEN LAYERS OF PACKING TRAY INSIDE CARTON BOX  
(INCLUDE THE UPPERMOST AND LOWERMOST TRAY)

DRWN		DATE	TITLE	PART NO. / DRAWING NO.	STANDARD DIM. TOL. IN INCH	[ ] METRIC DIM. AS REFERENCE	REV. :
LING		12-12-04	2X8 MagJack™ (4 Cores)	0811-2X8R-28	.X	UNIT : INCH [mm]	C
CHKD		DATE		FILE NAME	.XX	SCALE : N/A	SIZE : A4
TAO/KEUNG		12-12-04		08112X8R28C.DWG	.XXX ±0.010	⊕	PAGE : 6

FORM NO. - ENG020B2001

