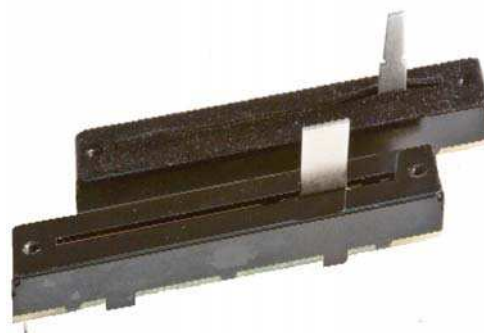


**Model PSxxG**  
**Slide Potentiometer**  
**With/Without Dust Cover**  
**Stable Sliding Force**  
**200,000 Cycle Life**  
**Metal Lever**  
**RoHS Compliant**



**MODEL STYLE**

Dual Gang , 45mm Travel	PS45G
Dual Gang , 60mm Travel	PS60G

**ELECTRICAL<sup>1</sup>**

Resistance Range, Ohms	10K -1M
Standard Resistance Tolerance	± 20%
Resistance Tapers	A,B,C
Residual Resistance	Less than 1.0 ohms
Input Voltage, Maximum	300Vdc
Power rating, Watts	<b>Linear B taper:</b> 0.25W <b>Other tapers:</b> 0.125W
Dielectric Strength	300Vac, 1 minute
Insulation Resistance, Minimum	10M ohms at 250Vdc/ 1 minute
Sliding Noise	Less than 100mV
Gang Error	±3dB (-40dB to 0dB)

**MECHANICAL**

Static Stop Strength, Minimum	5.0 Kg/cm
Operating Force	50gf max.

**DURABILITY**

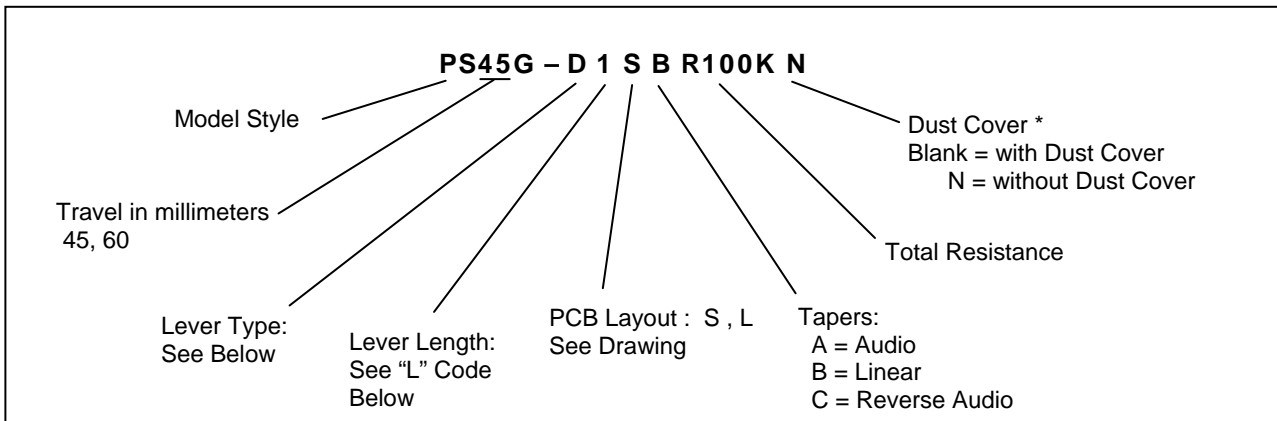
Sliding Life	200,000 cycles
--------------	----------------

<sup>1</sup> Specifications subject to change without notice.

# Model PSxxG

## ORDERING INFORMATION<sup>2</sup>

### Model PSxxG



## STANDARD RESISTANCE VALUES, OHMS

10K	20K	50K	100K	200K	500K	1 MEG
-----	-----	-----	------	------	------	-------

### Lever Types & Length

D-Type						B-Type					C-Type			A-Type			
L	12.5	15	17	20	25	L	8	12.5	13	20	F	10	M	11	12	12	
CODE	1	2	3	4	5	CODE	1	2	3	4	L	15	F	11	10	10	
											CODE	1	L	16	20	25	
													CODE	1	2	3	

\* Dust Cover option not offered for levers less than 10 mm in length

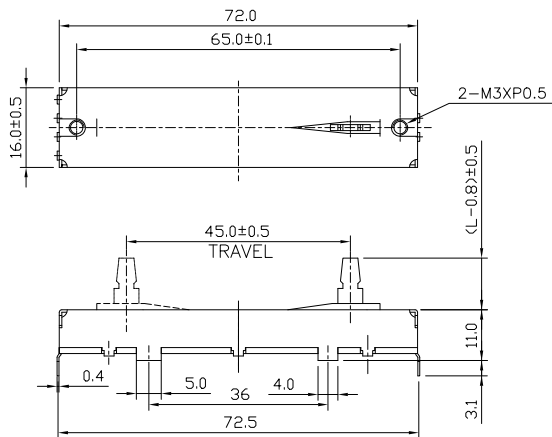
<sup>2</sup> Contact our customer service for custom designs and features.

# Model PSxxG

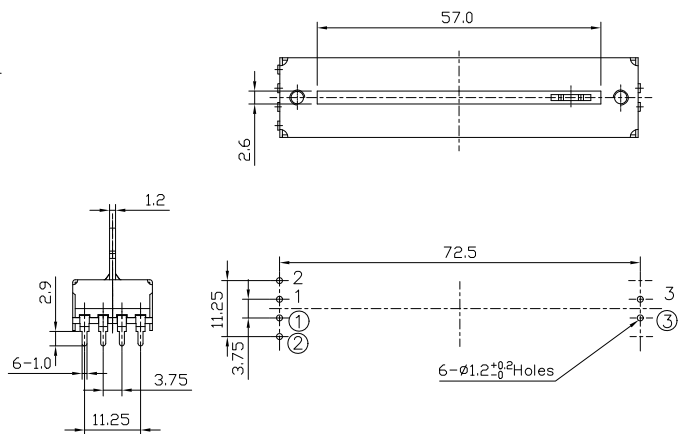
## OUTLINE DRAWING

### PS45G with L type PCB LAYOUT

With Dust Cover

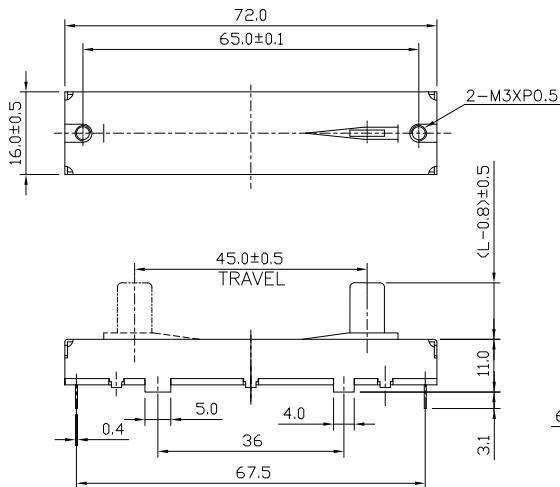


Without Dust Cover

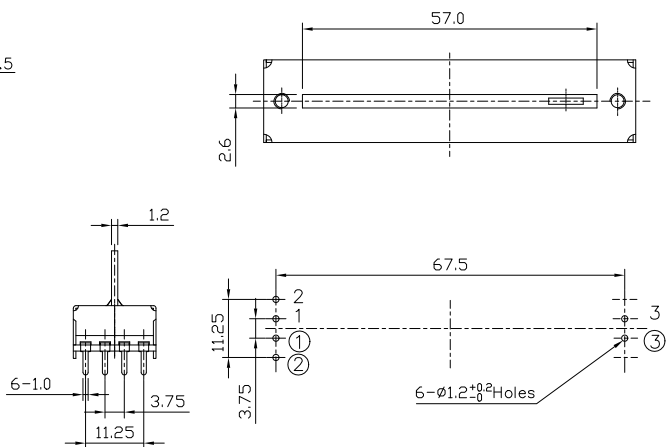


### PS45G with S type PCS LAYOUT

With Dust Cover



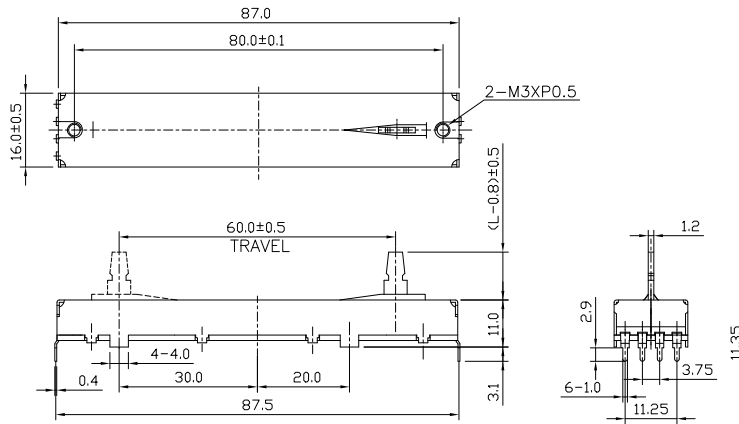
Without Dust Cover



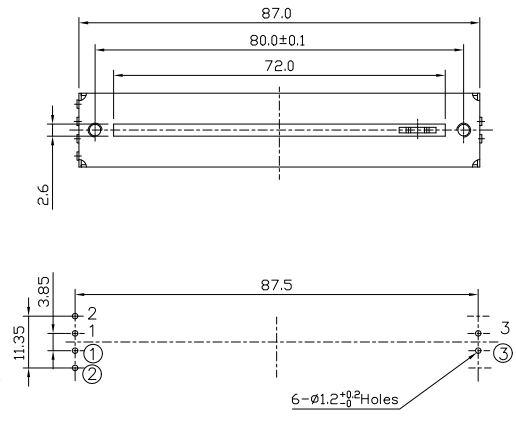
# Model PSxxG

## PS60G with L type PCB LAYOUT

With Dust Cover

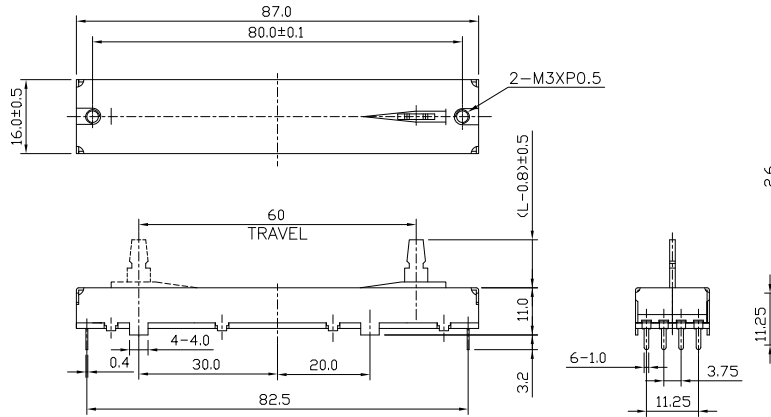


Without Dust Cover

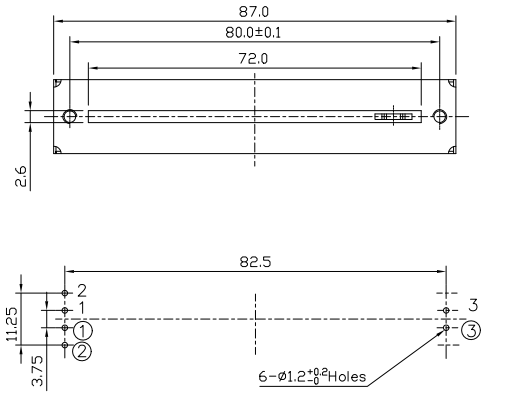


## PS60G with S type PCB LAYOUT

With Dust Cover

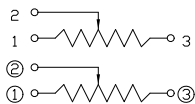


Without Dust Cover



## CIRCUIT DIAGRAM

### PSxxG Dual Gang



BI Technologies Corporation  
4200 Bonita Place, Fullerton, CA 92835 USA

Phone: 714 447 2345 Website: [www.bitechnologies.com](http://www.bitechnologies.com)

December 7, 2009

page 4 of 4

