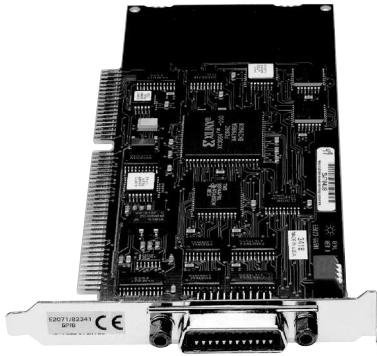


Agilent 82345G VEE Pro 6.0 PC ISA GPIB Automation Kit for Windows®

Data Sheet

- Hardware, I/O software, and application software bundled together in one convenient package
- Provides easy access to and control of your instrumentation via your PC
- Includes SICL, VISA, and Agilent VEE Pro graphical programming environment
- GPIB cable is included
- Priced 17% lower than individual components



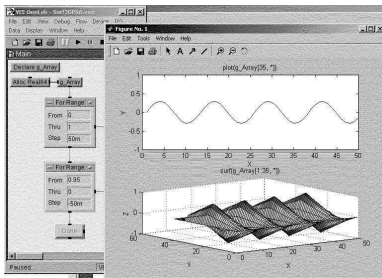
Description

Agilent Technologies has packaged together its low-cost, high-performance IEEE-488 interface card and software for ISA-based PCs with Agilent VEE Pro graphical programming environment to make configuring your system easier, and to make ordering more convenient—at the best possible price! The 82345G VEE Pro 6.0 PC ISA GPIB Automation Kit provides the hardware and software necessary to easily access and control your GPIB instrumentation via your PC.

The 82345G VEE Pro 6.0 PC ISA GPIB Automation Kit includes:

- The 82341C High-performance IEEE-488 Interface and software for ISA-based PCs
- Agilent VEE Pro graphical programming environment
- GPIB cable

The 82341C is a high-speed, 16-bit card with built-in buffering, which de-couples GPIB transfers from ISA bus transfers. The 82341C includes SICL and VISA I/O software for Windows 95/98/NT/2000. The GPIB interface card plugs into an ISA slot in the backplane of your PC, and via a GPIB cable connects to GPIB instruments.



Agilent VEE Pro 6.0 is a powerful graphical programming environment for fast measurement analysis results. The powerful analysis capability of MATLAB Script, fully integrated with Agilent VEE, gives users a wide selection of numeric computation tools, engineering graphics, and signal processing functions. VEE Pro 6.0 also supports ActiveX Controls that provide customization by adding application-specific functionality like barcode readers or video capabilities. Agilent VEE handles day-to-day programming tasks in instrument control, measurement processing, and test reporting. It simplifies test development with enhancements for system integration, debugging, structured program design, and documentation. It automates instrument configuration, accelerates the creation of operator interfaces, streamlines test sequencing, and simplifies application development and program enablement across the Internet.

Refer to the Agilent Technologies Website for instrument driver availability and downloading instructions, as well as for recent product updates, if applicable.

Product Specifications

Operating system:	Windows 95/98/NT/2000
Controller:	PC
I/O library:	SICL / VISA
Backplane:	ISA
Max. I/O speed:	750 KB/s
Buffering:	Built-in
Languages:	Agilent VEE Pro

Ordering Information

Description	Product No.	
VEE Pro 6.0 PC ISA GPIB Automation Kit	82345G	BUY 

Microsoft®, Windows®, MS Windows® and Windows NT®, are U.S. registered trademarks of Microsoft Corporation.

Agilent Technologies' Test and Measurement Support, Services, and Assistance

Agilent Technologies aims to maximize the value you receive, while minimizing your risk and problems. We strive to ensure that you get the test and measurement capabilities you paid for and obtain the support you need. Our extensive support resources and services can help you choose the right Agilent products for your applications and apply them successfully. Every instrument and system we sell has a global warranty. Support is available for at least five years beyond the production life of the product. Two concepts underlie Agilent's overall support policy: "Our Promise" and "Your Advantage."

Our Promise

Our Promise means your Agilent test and measurement equipment will meet its advertised performance and functionality. When you are choosing new equipment, we will help you with product information, including realistic performance specifications and practical recommendations from experienced test engineers. When you use Agilent equipment, we can verify that it works properly, help with product operation, and provide basic measurement assistance for the use of specified capabilities, at no extra cost upon request. Many self-help tools are available.

Your Advantage

Your Advantage means that Agilent offers a wide range of additional expert test and measurement services, which you can purchase according to your unique technical and business needs. Solve problems efficiently and gain a competitive edge by contracting with us for calibration, extra-cost upgrades, out-of-warranty repairs, and on-site education and training, as well as design, system integration, project management, and other professional engineering services. Experienced Agilent engineers and technicians worldwide can help you maximize your productivity, optimize the return on investment of your Agilent instruments and systems, and obtain dependable measurement accuracy for the life of those products.

By internet, phone, or fax, get assistance with all your test & measurement needs.

Online assistance:

www.agilent.com/find/assist

Phone or Fax

United States:
(tel) 1 800 452 4844

Canada:
(tel) 1 877 894 4414
(fax) (905) 282 6495

China:
(tel) 800 810 0189
(fax) 1 0800 650 0121

Europe:
(tel) (31 20) 547 2323
(fax) (31 20) 547 2390

Japan:
(tel) (81) 426 56 7832
(fax) (81) 426 56 7840

Korea:
(tel) (82 2) 2004 5004
(fax) (82 2) 2004 5115

Latin America:
(tel) (305) 269 7500
(fax) (305) 269 7599

Taiwan:
(tel) 080 004 7866
(fax) (886 2) 2545 6723

Other Asia Pacific Countries:
(tel) (65) 375 8100
(fax) (65) 836 0252
Email: tm_asia@agilent.com

Product specifications and descriptions in this document subject to change without notice.

© Agilent Technologies, Inc. 2001
Printed in USA August 1, 2001
5968-3924E



Agilent Technologies