

## **Agilent E4444A BenchLink Spectrum Analyzer**

### **PC Software for Portable Spectrum, EMC, and Sweep/Ingress Analyzers**

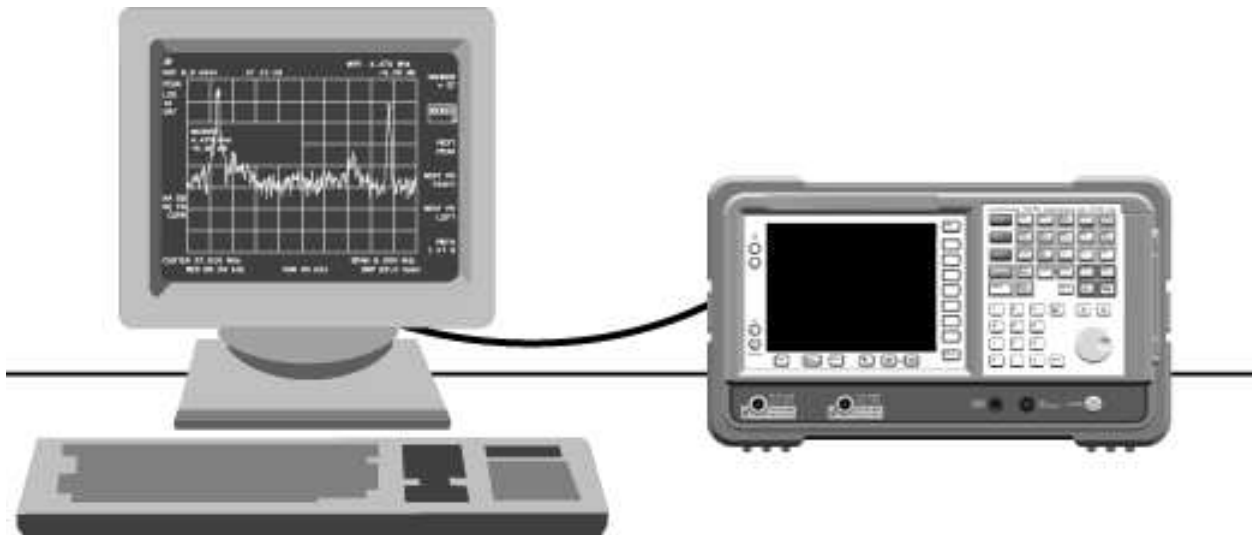
Product Overview

Easily transfer screen images and trace data from the Agilent Technologies 8560 series\*, 8590 series, and ESA-E/L series portable spectrum analyzers; the

E7400 series EMC analyzers; and the CaLan 2010/3010 series sweep/ingress analyzers over GPIB or RS-232 interfaces to a Windows®-based PC.

Capture your measurement results and:

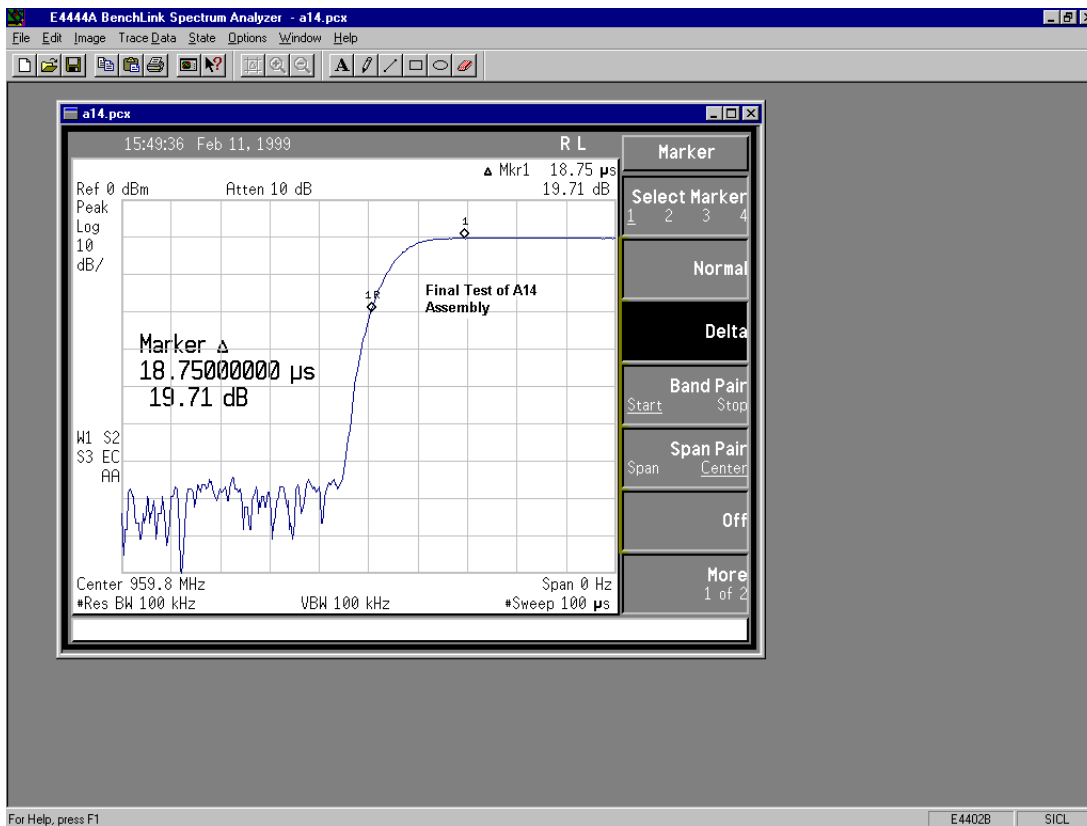
- Save
- Print
- Copy & paste
- Analyze
- E-mail
- Import
- Annotate
- Document



**Agilent Technologies**

### Easy to use

- We've done all the programming for you.
- The simple user interface is similar to that of other BenchLink products.
- On-line context-sensitive Help provides detailed support in many languages.
- Users of the Agilent 8590 series, ESA-L1500A, and ESA-E/L series spectrum analyzers can restore previous instrument setups for ease in capturing repetitive measurements.
- A multilanguage Getting Started guide and a full install/uninstall utility simplify installation.
- Convenient multicolor annotation tools add key information to screen images.



### Screen images

- Transfer a color picture of the analyzer screen to your PC to view, save, annotate, e-mail, or print.
- Capture the images in bitmap or HP-GL<sup>1,2</sup> formats and save them as PCX, TIF, GIF, BMP, or HP-GL<sup>1,2</sup> files for importing into your favorite applications.
- Use the Windows<sup>®</sup> clipboard to copy and paste images directly to your application.

1. HP-GL images can only be saved in an HP-GL file format.  
2. HP-GL images are not available from the Agilent ESA-L1500A, ESA-E/L series, E7400 series, or CaLan 2010/3010 series analyzers.

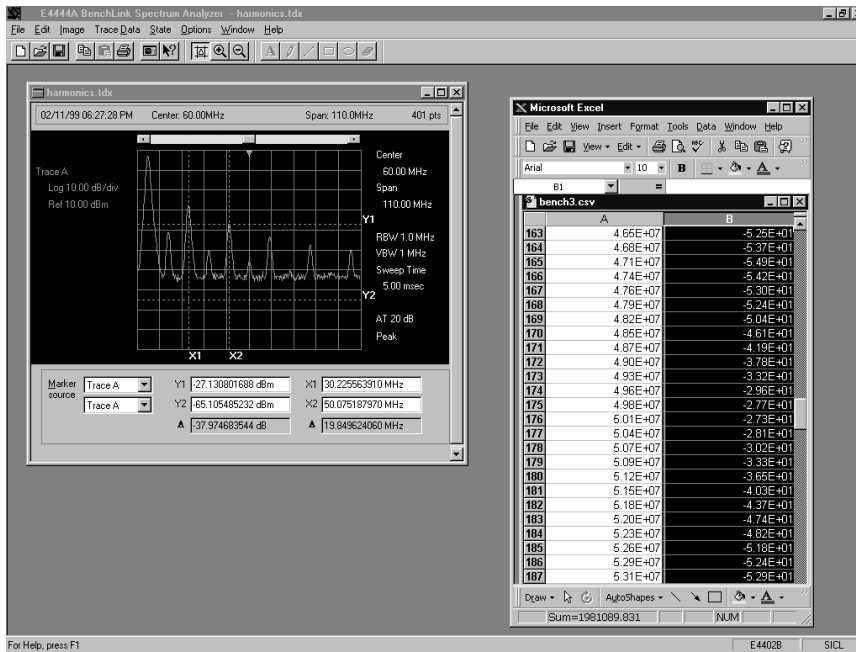
### Trace data

- Transfer the frequency/amplitude pairs of trace data and display them graphically on your PC.
- Use the BenchLink Pan, Zoom, and X/Y Marker features to analyze the traces.
- Copy trace data as frequency/amplitude pairs in comma- or tab-separated formats to spreadsheets or math applications for further analysis and manipulation.

### Compatibility

- The BenchLink Spectrum Analyzer supports these Agilent instruments:
  - 8560 series\*
  - 8590 series
  - 8590 EM-series
  - ESA-L1500A
  - ESA-E/L series
  - E7400 series
  - CaLan 2010/3010 series
- Supported PC operating systems are Windows 3.1 or higher (with MS-DOS® 4.0 or higher), Windows 95, Windows 98, and Windows NT® 4.0. Operation under MS-DOS or NT 3.51 is not supported.

- Minimum system requirements are: IBM or compatible PC with a 486/25 MHz processor, 8 MB RAM, 3 MB available disk space, MS-compatible mouse, color VGA/SVGA display, CD-ROM, or 3.5-inch high-density floppy drive. The program is provided on CD-ROM and includes 3.5-inch floppy disk installation/build capability and full uninstall.
- Supported interfaces include RS-232 and IEEE-488. Suitable IEEE-488 PC interface cards include Windows-compatible GPIB and most National Instrument cards.
- Compatible with the entire BenchLink family of PC software.



### Free trial demo

Evaluate a demo version of the BenchLink Spectrum Analyzer on your PC for up to four weeks. Visit Agilent Technologies' Web site at [www.agilent.com/find/BenchLinksa](http://www.agilent.com/find/BenchLinksa) to download this demo program to your PC.

## Ordering information

Model	Description
E4444A	BenchLink Spectrum Analyzer software

### Accessories

10833A	GPIB cable (1 meter)
24542U	RS-232 cable (3 meter, 9 pin F to 9 pin F)
24542G	RS-232 cable (3 meter, 25 pin M to 9 pin F)
13242G	RS-232 cable (5 meter, 25 pin M to 25 pin M)
8120-6188	RS-232 cable (3 meter, 9 pin F to 9 pin M)

### Additional BenchLink PC software

34810B	BenchLink Scope
34811A	BenchLink Arb
34812A	BenchLink Meter
34820A	BenchLink Suite

\*8560 Series does not include 8566/68 analyzers.

Windows, Windows NT, and MS-DOS are U.S. registered trademarks of Microsoft Corporation.

### Agilent Technologies' Test and Measurement Support, Services, and Assistance

Agilent Technologies aims to maximize the value you receive, while minimizing your risk and problems. We strive to ensure that you get the test and measurement capabilities you paid for and obtain the support you need. Our extensive support resources and services can help you choose the right Agilent products for your applications and apply them successfully. Every instrument and system we sell has a global warranty. Support is available for at least five years beyond the production life of the product. Two concepts underlie Agilent's overall support policy: "Our Promise" and "Your Advantage."

#### Our Promise

Our Promise means your Agilent test and measurement equipment will meet its advertised performance and functionality. When you are choosing new equipment, we will help you with product information, including realistic performance specifications and practical recommendations from experienced test engineers. When you use Agilent equipment, we can verify that it works properly, help with product operation, and provide basic measurement assistance for the use of specified capabilities, at no extra cost upon request. Many self-help tools are available.

#### Your Advantage

Your Advantage means that Agilent offers a wide range of additional expert test and measurement services, which you can purchase according to your unique technical and business needs. Solve problems efficiently and gain a competitive edge by contracting with us for calibration, extra-cost upgrades, out-of-warranty repairs, and on-site education and training, as well as design, system integration, project management, and other professional engineering services. Experienced Agilent engineers and technicians worldwide can help you maximize your productivity, optimize the return on investment of your Agilent instruments and systems, and obtain dependable measurement accuracy for the life of those products.

**By internet, phone, or fax, get assistance with all your test and measurement needs.**

#### Online assistance:

**[www.agilent.com/find/assist](http://www.agilent.com/find/assist)**

#### Phone or Fax

United States:  
(tel) 1 800 452 4844

Japan:  
(tel) (81) 426 56 7832  
(fax) (81) 426 56 7840

Canada:  
(tel) 1 877 894 4414  
(fax) (905) 282 6495

Korea:  
(tel) (82 2) 2004 5004  
(fax) (82 2) 2004 5115

China:  
(tel) 800 810 0189  
(fax) 1 0800 650 0121

Taiwan:  
(tel) 080 004 7866  
(fax) (886 2) 2545 6723

Europe:  
(tel) (31 20) 547 2323  
(fax) (31 20) 547 2390

Other Asia Pacific Countries:  
(tel) (65) 375 8100  
(fax) (65) 836 0252

Latin America:  
(tel) (305) 269 7500  
(fax) (305) 269 7599

Email: [tm\\_asia@agilent.com](mailto:tm_asia@agilent.com)

Product specifications and descriptions in this document subject to change without notice.

© Agilent Technologies, Inc. 2001  
Printed in USA, January 15, 2002  
5966-0676E

