

# Agilent Technologies E1852B *Bluetooth* Test Set

## Data Sheet



- A low-cost stand-alone solution
- Establishes a link using standard *Bluetooth*™ protocol
- Fast functional test and performance test over the RF-interface
- Additional features aid module calibration and diagnostics
- Qualified by the *Bluetooth* SIG



# Functionality

## Test Mode with or without frequency hopping

Ability to act as a *Bluetooth* Master, perform *Inquiry* and establish a *Paged* connection in test mode [*Bluetooth* Specification 1.1] with a *Bluetooth* device.

**DUT mode:** Transmitter mode or loopback mode, with or without data whitening

**Transmitter measurements:** Provide the following results:

- Average Power
- Peak Power
- Frequency Offset
- Frequency Drift
- Frequency Drift Rate
- Frequency Deviation [0F calibrated]
- Graphical results showing frequency vs. time, power vs. time, power vs. channel number

**Receiver measurement:**

- Number of test bits settable, up to 1.6 million
- Bit Error Rate
- Packet Error Rate

**Results averaging:** 1 to 200

**Poll period:** 1-255

**Packet types:** DH1, DH3, DH5, HV3, AUX1

**Packet length:** Variable, according to the *Bluetooth* specifications for each packet type supported

**Packet payload:** 00000000, 11111111, 01010101, 00001111, Pseudo-random (PN9), User-defined

**Power control:** Instruct DUT (Device Under Test) to increase/decrease RF output power

## Normal Mode

Ability to act as a *Bluetooth* Master, perform *Inquiry* and establish a *Paged* connection [*Bluetooth* Specification 1.1] with a *Bluetooth* device.

**Transmitter measurements:**

- Power & Frequency measurement results based on the use of a zero length payload
- Graphical results showing frequency vs. time, power vs. time, power vs. channel number

**Receiver measurements:**

- Packet Error Rate

**Results averaging:** 1 to 200

**Poll period:** 1

**Packet payload:** No payload is present in this mode

**Power control:** Instruct DUT (Device Under Test) to increase/decrease RF output power.

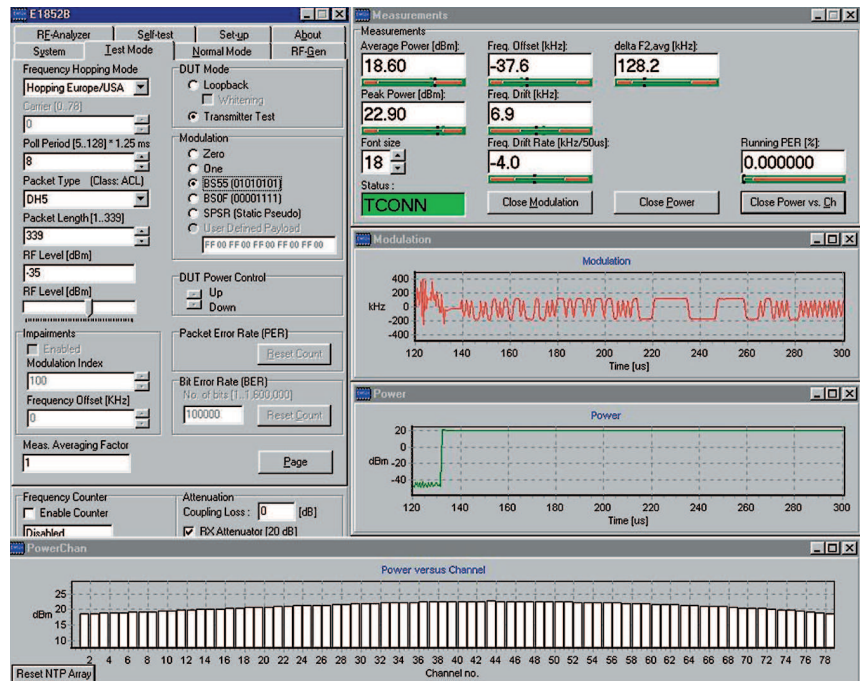
## RF-Analyzer

Transmitter measurements as described in Test Mode, but for use when no link is established. (DH1, DH3 or DH5 packets and 01010101, 00110011 or 00001111 payloads only)

## RF-Generator

Burst or continuous signal on any channel, with selectable power output and frequency offset. (01010101, 00110011, and 00001111 payloads supported)

The PC-based user interface is easy to learn and use. The measurement summary shows all transmitter and receiver measurements, with bar graphs using pass/fail limits.



## Performance

The test set will meet its specification after 2 hours of storage within the stated operating range, 60 minutes after turn on.

### RF-Generator

<b>Frequency:</b>	
Range	2402MHz - 2480MHz, 79 channels at 1 MHz spacing
Modulation	In accordance with <i>Bluetooth</i> Radio Specification Version 1.1
<b>Output Power:</b>	
Range	-85dBm to 0dBm
Resolution	0.1dB
Accuracy <sup>1,2</sup> over the output range	
-85 to -10 dBm	±1.0 dB at 25 °C ±3 °C (±1.4 dB over full operating temperature)
>-10 to 0 dBm	±1.1 dB at 25 °C ±3 °C (±1.9 dB over full operating temperature)

### RF-Analyzer

<b>Frequency:</b>	
Range	2402MHz - 2480MHz 79 channels at 1 MHz spacing
Demodulation	±400 kHz maximum
Error	±(Timebase error + 5 kHz) (nominal)
<b>Power Measurement:</b>	
Range	-55 dBm to +23 dBm
Resolution	0.1 dB
Accuracy <sup>3</sup> over the input range	
-30 to +23 dBm	±0.9 dB at 25 °C ±3 °C (±1.3 dB over full operating temperature)
<b>Frequency Counter Input</b>	
Range	10 kHz to 15 MHz
Frequency Error	±(Timebase error + 100 Hz) (nominal)
Resolution	1 Hz
Sensitivity	0.5V RMS (nominal)

### Frequency Reference

Internal Timebase:	
Drift due to temperature	±2.0 ppm
Aging	±1.0 ppm / year
Frequency Reference input:	
Frequency	10 MHz (nominal)
Sensitivity	150 mV into 50 Ω (nominal)



## General Specifications

### Impairments

Frequency Offset	-75kHz to +75kHz (settable in 1kHz steps)
Modulation Index	0.28 to 0.35 (settable in 0.01 steps)

### Input/Output Connectors

RF In/Out N(f), 50 Ω (nominal)
Counter In BNC(f), high impedance
GPIB Connector, IEEE 488 Standard
Parallel Port 25-pin D-sub(m)
Serial Port [RS-232] 9-pin D-sub(f) used for firmware downloads
Frequency reference input, BNC(f), 50 Ω nominal
Audio, BNC(f), 50 Ω nominal supports A-Law, μ-Law and CVSD codec formats
• Input
• Output
Analog Outputs, BNC(f), 50 Ω nominal
• <i>Bluetooth</i> Slot Clock (625μs interval)
• Received Data (inverted)
• Receive Slot Sync
• Power Envelope

### Environmental Conditions

Operating Temperature	+15°C to +45°C
Operating Humidity	Up to 95% relative humidity to 40°C (non-condensing)

### Power Consumption

Supply Voltage	100-120VAC, 200-240VAC 50-60Hz, 30VA maximum
----------------	---

### Mechanical

Dimensions	92mm(H) x 280mm(D) x 484mm(W) Designed for rack-mounting
Weight	3.6Kg

### Software Supplied

- PC-based user interface
- VXI *plug&play* driver (Agilent VEE, Labview, C++ & others)
- Scripting software and examples

### Computer Requirements

The test set requires the use of a PC (not supplied) with:

- Pentium® Processor or higher, 32MB RAM or more, 200MB available on hard drive
- Windows® 95, Windows® 98, Windows® 2000, Windows NT® 4.0(SP 3)
- GPIB or dedicated bi-directional parallel port
- 1024 x 768 resolution color monitor
- Microsoft Internet Explorer version 4.0 or higher/Netscape Communicator Version 4.0 or higher and internet connection required to download software/firmware upgrades

<sup>1</sup> A measurement uncertainty of 0.43 dB is included in these limits

<sup>2</sup> This specification is not applicable above -24dBm when used in frequency hopping mode

<sup>3</sup> A measurement uncertainty of 0.36 dB is included in these limits

These uncertainty values are calculated using ISO TAG4, in line with the 'Guide to the Expression of Uncertainty in Measurement' and are based on a standard uncertainty multiplied by a coverage factor of k = 2, providing a level of confidence of approximately 95%.

[www.agilent.com](http://www.agilent.com)

**Agilent Technologies' Test and Measurement Support, Services, and Assistance**

Agilent Technologies aims to maximize the value you receive, while minimizing your risk and problems. We strive to ensure that you get the test and measurement capabilities you paid for and obtain the support you need. Our extensive support resources and services can help you choose the right Agilent products for your applications and apply them successfully. Every instrument and system we sell has a global warranty. Support is available for at least five years beyond the production life of the product. Two concepts underlie Agilent's overall support policy: "Our Promise" and "Your Advantage."

**Our Promise**

Our Promise means your Agilent test and measurement equipment will meet its advertised performance and functionality. When you are choosing new equipment, we will help you with product information, including realistic performance specifications and practical recommendations from experienced test engineers. When you use Agilent equipment, we can verify that it works properly, help with product operation, and provide basic measurement assistance for the use of specified capabilities, at no extra cost upon request. Many self-help tools are available.

**Your Advantage**

Your Advantage means that Agilent offers a wide range of additional expert test and measurement services, which you can purchase according to your unique technical and business needs. Solve problems efficiently and gain a competitive edge by contracting with us for calibration, extra-cost upgrades, out-of-warranty repairs, and on-site education and training, as well as design, system integration, project management, and other professional engineering services. Experienced Agilent engineers and technicians worldwide can help you maximize your productivity, optimize the return on investment of your Agilent instruments and systems, and obtain dependable measurement accuracy for the life of those products.



**Agilent Email Updates**

[www.agilent.com/find/emailupdates](http://www.agilent.com/find/emailupdates)

Get the latest information on the products and applications you select.

**For more assistance with your test & measurement needs or to find your local Agilent office go to: [www.agilent.com/find/assist](http://www.agilent.com/find/assist)**

**More information on Agilent Technologies' *Bluetooth* solutions is available at: [www.agilent.com/find/bluetooth](http://www.agilent.com/find/bluetooth)**

**By internet, phone, or fax, get assistance with all your test & measurement needs**

**Online assistance:**  
[www.agilent.com/find/assist](http://www.agilent.com/find/assist)

**Phone or Fax**

**United States:**  
(tel) 1 800 452 4844

**Canada:**  
(tel) 1 877 894 4414  
(fax) (905) 282 6495

**China:**  
(tel) 800 810 0189  
(fax) 800 820 2816

**Europe:**  
(tel) (31 20) 547 2323  
(fax) (31 20) 547 2390

**Japan:**  
(tel) (81) 426 56 7832  
(fax) (81) 426 56 7840

**Korea:**  
(tel) (82 2) 2004 5004  
(fax) (82 2) 2004 5115

**Latin America:**  
(tel) (305) 269 7500  
(fax) (305) 269 7599

**Taiwan:**  
(tel) 0800 047 866  
(fax) 0800 286 331

**Other Asia Pacific Countries:**  
(tel) (65) 6375 8100  
(fax) (65) 6836 0252  
(e-mail) [tm\\_asia@agilent.com](mailto:tm_asia@agilent.com)

*Bluetooth* and the *Bluetooth* logos are trademarks owned by the *Bluetooth* SIG, Inc., U.S.A. and licensed to Agilent Technologies, Inc.

Microsoft Windows, 95, 98, 2000, and NT are U.S. registered trademarks of Microsoft Corporation. Pentium is a U.S. registered trademark of Intel Corporation.

Product specifications and descriptions in this document subject to change without notice.

© Agilent Technologies, Inc. 2002  
Printed in the USA May 15, 2002  
5988-4968EN



**Agilent Technologies**