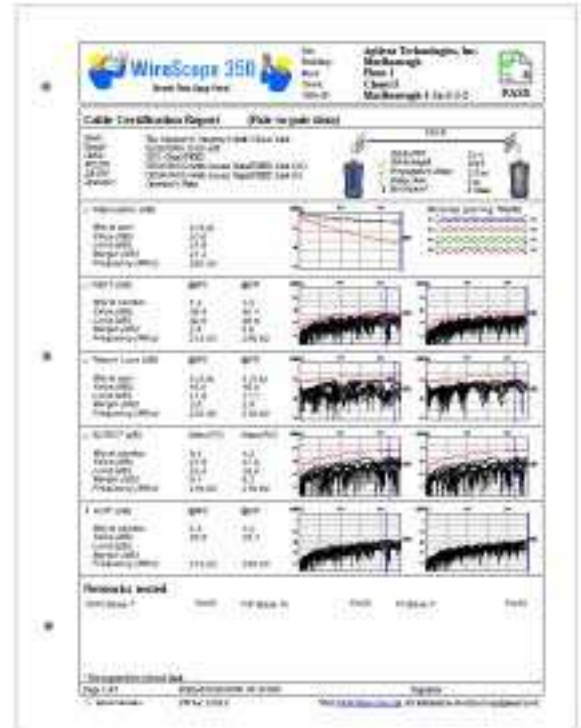


ScopeData Pro LAN Cable Certification

Features

- Prints professional-quality preformatted graphical test reports, complete with logos and data plots
- Uploads copper and fiber test results from both WireScope 155 and WireScope 350
- Settings Profile function allows users to pre-configure and lock test settings for multiple WireScopes to ensure consistency
- Limits Wizard function lets users define custom test limits and custom test configurations
- Organizes cable tests by site, building, floor, wiring closet, etc., to simplify record navigation
- Application can be freely distributed with test results to facilitate customer access to on-line test reports
- Stores test data in Microsoft Access® database format. Can be integrated with popular cable management software solutions.



Sample Test Report

Better Reporting

Until now, the standard output format for reports from field certification testers has been unformatted ASCII text. While this approach has been functional, many users find the text-based reports difficult to read and have requested a more compelling presentation of the test data. Cabling contractors have responded by importing test data into database and spreadsheet programs in order to print better-looking reports, adding an extra step that can add considerable time to the process of preparing project documentation.

Professional-Quality Printed Reports

ScopeData Pro addresses this need with professionally designed report formats incorporating logos, proportionally formatted text, circuit schematics and plots when plot data is available. The graphical format speeds comprehension of the otherwise potentially confusing volume of data contained in cable certification reports.

Advanced Cable Plant Database

While printed test report output quality is important, many project managers prefer to handle test result data in electronic form. Built on scalable relational database technology, ScopeData Pro is the ideal system for organizing and analyzing electronic test results for large projects or sites.

PC-Based Setup Assures Consistency

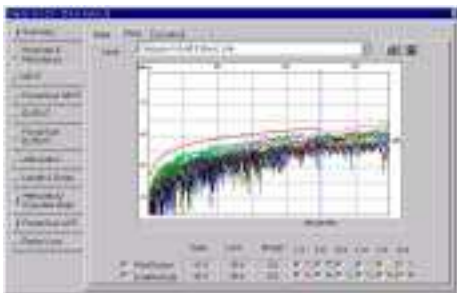
One of the challenges faced in certifying cabling at large sites is assuring that all of the test sets used are configured consistently. This challenge is especially acute when non-standard testing requirements or limits are specified. The ScopeData Pro Profile Wizard function addresses this problem by allowing the user to define and save WireScope 350 settings to a locked profile that can be downloaded to multiple WireScopes.



ScopeData Pro Results Explorer window



Test Viewer window, showing test summary tab



Test Viewer window, showing NEXT tab and plot detail

Simplified Navigation of Test Data

The new data navigation architecture embodied in ScopeData Pro streamlines support for large sites or client accounts that span multiple sites. Test records can be arranged in a collapsible hierarchy, organized by site, building, floor, closet, etc. This format is completely flexible and can be defined to match the requirements of each client or site.

Test Viewer Drills In For Detail

The tabbed Test Viewer window presents detailed test report data. Each tab displays a different aspect of the test report, ranging from high level summary diagrams to detailed configurable data plots. All plots can be printed individually or as part of the overall autotest reports.

Specifications

WireScope 155 Support

Uploads test parameters supported by WireScope 155 via serial port. Can run WireScope 155 autotest via serial port. Can upgrade WireScope 155 software.

WireScope 350 Support

Uploads test parameters supported by WireScope 350 via serial port, USB port or by directly reading files from CompactFlash™ memory cards. Can upgrade WireScope 350 software.

Operating Systems Supported

Windows 95, Windows 98, Windows NT version 4

System Requirements

25 MB of free hard disk space prior to installation

Ordering Information

Part Number	Description
N2605A-060	ScopeData Pro on CD-ROM

© Copyright Agilent Technologies, Inc. 2002 Rev 08/02

For more information about Agilent Technologies WireScope 350 product, applications, and services please contact:

Agilent sales representative
 Tel: 800-829-4444 or +1 877 424-4536
 E-mail: team_framescope@agilent.com
 Visit: <http://www.agilent.com/find/contactus>