

# Agilent N5980A

## 3.125 Gb/s Serial BERT

Data Sheet

Version 1.0

### Key Benefits

- Standard measurement rates between 125 Mb/s and 3.125 Gb/s
- Electrical and optical (SFP) interfaces (generator: concurrently)
- PRBS, K28.5 pattern or clock generation and integrated clock data recovery
- Smallest BERT available today
- Easy-to-use and cost efficient
- Controlled from user software running on an external Windows 2000 or XP PC connected by a USB 2.0 interface
- BERT can be fully programmed



The Agilent N5980A 3.125 Gb/s Serial BERT is ideal for manual or automated manufacturing test of electrical and optical devices running at speeds between 125 Mb/s to 3.125 Gb/s. It addresses all common standard speeds via selectable bit rates.

#### Easy-to-use and cost efficient

The software user interface has one standard or one advanced screen to ensure intuitive use for operators. It makes the instrument easy to use and easy to learn.

#### Twice the measurement throughput

By using both the electrical and optical (SFP) interfaces concurrently, you can double your measurement throughput (electrical in/optical out and vice versa).

#### Automation made easy

The remote programmability of the user interface, using SCPI-syntax, makes it simple to integrate the N5980A into other programs.

#### PRBS, K28.5 pattern or clock generation and integrated clock data recovery

The N5980A can generate standard PRBS polynomials, K28.5 ('Comma') characters and different sub-rate clocks ( $/2$  to  $/20$ ). It can also inject errors with an adjustable error ratio. The receiver has a clock-data-recovery (CDR) built-in and differential inputs (SMA) for signals from 50 mV<sub>pp</sub> to 2 V<sub>pp</sub> amplitude.

#### Standard (SFP) optical module plug-in

The instrument has a standard SFP-female connector. This enables all different kind of user-selectable optical modules (e.g for multi-mode/single-mode fiber at 850nm, 1310nm and 1550nm for the test set-up).

#### Small size

Its very small size allows the N5980A to fit on any bench and in any automated setup. The dimensions are, WxHxD, 228mm x 59mm x 246mm (Bench top dimensions.)



Agilent Technologies

## System Specifications

### Data rate

The same data rate applies for pattern generator electrical out and optical out, and for error detector electrical in and optical in.

### Data rates

Fast Ethernet	125 Mb/s
OC-3	155.52 Mb/s
OC-12	622.08 Mb/s
OC-48	2.48832 Gb/s
OC-48 with FEC	2.66606 Gb/s
1 x FC	1.0625 Gb/s
2 x FC	2.125 Gb/s
1 x Gigabit Ethernet	1.25 Gb/s
XAU1	3.125 Gb/s
Accuracy	± 50 ppm

### Operating system

The software supplied runs on Windows 2000 or XP with .NET v2.0, by a USB 2.0 interface.

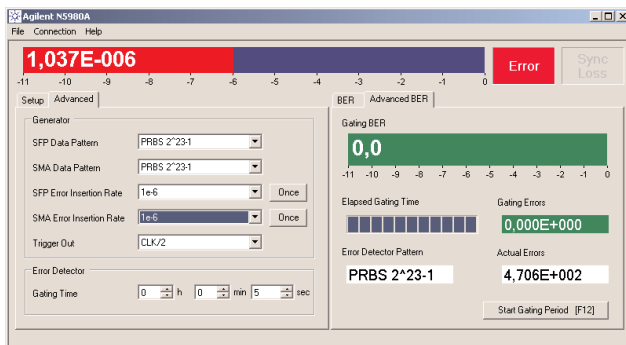


Figure 1: User interface-advanced mode

## Pattern Generator

### Pattern

The following patterns are supported:

PRBS:  $2^7-1$ ,  $2^{15}-1$ ,  $2^{23}-1$ ,  $2^{31}-1$ .

Data pattern: K28.5.

Clock pattern: data rate divide by n, n=2,4,8,10,16,20

The pattern can be **individually** adjusted for pattern generator electrical out and optical out.

### Error injection

Fixed electrical and optical error inject: Fixed error ratios of 1 error in  $10^n$  bits, n=3,4,5,6,7,8,9.

Single error injection. Separate error ratios can be adjusted for pattern generator electrical out and optical out.

### Pattern generator electrical out

A differential electrical output is provided on the front-panel.

### Out/ $\bar{O}$ ut

Output type	differential, AC-coupled, external 100 $\Omega$ differential termination
Amplitude, selectable ECL:	850 mV <sub>pp</sub> typ., single-ended 1700 mV <sub>pp</sub> typ., differential
LVDS:	400 mV <sub>pp</sub> typ., single-ended 800 mV <sub>pp</sub> typ., differential
Jitter peak-peak	0.05 UI typ. @ OC-12 0.08 UI typ. @ GbE 0.15 UI typ. @ OC-48
Connector	SMA, front panel

### Pattern generator optical out

A standard SFP housing is provided. Minimum number of insertion/deinsertion cycles: 200.

### Trigger output

A single-ended, electrical output is provided on the front-panel.

### Trigger out

Output type	single-ended
Impedance	50 $\Omega$ nominal, AC-coupled
Amplitude	850 mV typ.
Clock rate, selectable	divided by n, n=2,4,8,10,16,20
data rate	
Connector	SMA, front Panel

## Error Detector

A differential electrical input is provided on the front-panel. Data rate is the same as pattern generator.

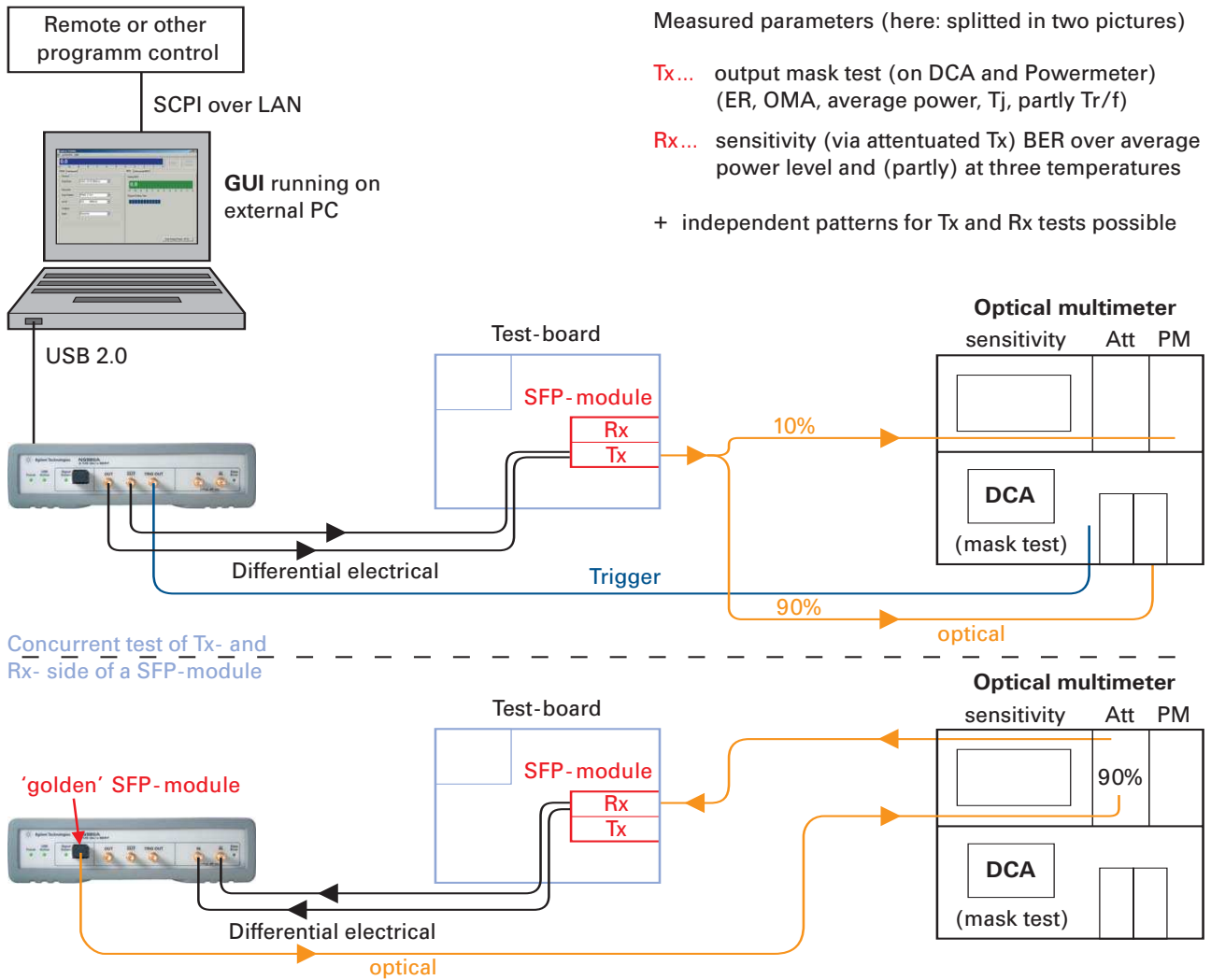
### Pattern

The following patterns are supported:

PRBS:  $2^7-1$ ,  $2^{15}-1$ ,  $2^{23}-1$ ,  $2^{31}-1$ .

### In/ $\bar{I}$ n

Input type	differential, AC-coupled
Max. input amplitude	1 V <sub>pp</sub> , single-ended 2 V <sub>pp</sub> , differential
Impedance	100 $\Omega$ nominal
Sensitivity	< 50 mV
Clocking mode	internal CDR
Synchronization	automatically on level, polarity, phase, bit and pattern
Connector	SMA, front panel



Measured parameters (here: splitted in two pictures)

**Tx...** output mask test (on DCA and Powermeter)  
(ER, OMA, average power, T<sub>j</sub>, partly Tr/f)

**Rx...** sensitivity (via attenuated Tx) BER over average power level and (partly) at three temperatures

+ independent patterns for Tx and Rx tests possible

Figure 2: Typical manufacturing tests of SFP-modules

## General

General	
Power supply	100 V to 240 V ~, 50-60 Hz
Power consumption	50 VA max
Operating temperature	0°C to 55°C
Operating altitude	up to 2000 m
Storage temperature	-30°C to 70°C
Interface	USB 2.0 standard
Language	SCPI syntax
Dimensions (W x H x D)	
Bench top (with bumper)	228 x 59 x 246 mm
Rack mount (without bumper)	1/2" 19" width, 1U height (213 x 44.5 x 245 mm)
Weight	1660 g
Safety designed to	IEC61010-1
EMC tested to	IEC61326
Warm-up time	10 min
Warranty	1 year standard

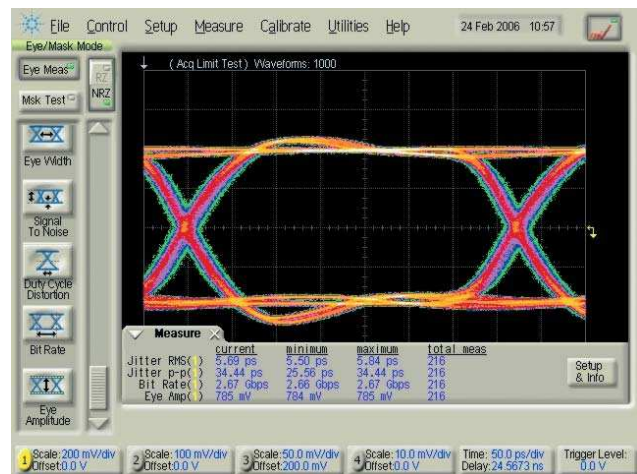


Figure 3: Typical eye diagram at 2.66 Gb/s

## Ordering Information

### Accessories Included

User Software and Demo CD includes:

- Application Presentation
- Data Sheet
- User documentation (User Guide with programming reference)
- User Software including offline demonstration

Local power cord, USB cable, SFP loopback connector

### Related Literature

### Publication Number

J-BERT N4903A High-Performance Serial BERT Brochure	5989-3882EN
J-BERT N4903A High-Performance Serial BERT Data Sheet	5989-2899EN
N4906B Serial BERT 12.5 Gb/s Data Sheet	5989-2406EN
Physical Layer Test Brochure	5988-9514EN
ParBERT 81250 Product Overview	5968-9188E
Infiniium DCA-J Wide-Bandwidth Oscilloscope Data Sheet	5989-0278EN
Infiniium 80000 Series Data Sheet	5989-1487ENUS
Fast Total Jitter Test Solution Application Note	5989-3151EN

## [www.agilent.com/find/manufacturing\\_BERT](http://www.agilent.com/find/manufacturing_BERT)

Product specifications and descriptions in this document subject to change without notice.

For the latest version of this document, please visit our website at [www.agilent.com/find/manufacturing\\_BERT](http://www.agilent.com/find/manufacturing_BERT) and go to the Key Library Information area or insert the publication number (5989-4752EN) into the search engine.



### Agilent Email Updates

[www.agilent.com/find/emailupdates](http://www.agilent.com/find/emailupdates)

Get the latest information on the products and applications you select.



### Agilent Direct

[www.agilent.com/find/agilentdirect](http://www.agilent.com/find/agilentdirect)

Quickly choose and use your test equipment solutions with confidence.

## [www.agilent.com](http://www.agilent.com)

### Agilent Technologies' Test and Measurement Support, Services, and Assistance

Agilent Technologies aims to maximize the value you receive, while minimizing your risk and problems. We strive to ensure that you get the test and measurement capabilities you paid for and obtain the support you need. Our extensive support resources and services can help you choose the right Agilent products for your applications and apply them successfully. Every instrument and system we sell has a global warranty. Two concepts underlie Agilent's overall support policy: "Our Promise" and "Your Advantage."

### Our Promise

Our Promise means your Agilent test and measurement equipment will meet its advertised performance and functionality. When you are choosing new equipment, we will help you with product information, including realistic performance specifications and practical recommendations from experienced test engineers. When you receive your new Agilent equipment, we can help verify that it works properly and help with initial product operation.

### Your Advantage

Your Advantage means that Agilent offers a wide range of additional expert test and measurement services, which you can purchase according to your unique technical and business needs. Solve problems efficiently and gain a competitive edge by contracting with us for calibration, extra-cost upgrades, out-of-warranty repairs, and onsite education and training, as well as design, system integration, project management, and other professional engineering services. Experienced Agilent engineers and technicians worldwide can help you maximize your productivity, optimize the return on investment of your Agilent instruments and systems, and obtain dependable measurement accuracy for the life of those products.



### Agilent Open

#### [www.agilent.com/find/open](http://www.agilent.com/find/open)

Agilent Open simplifies the process of connecting and programming test systems to help engineers design, validate and manufacture electronic products. Agilent offers open connectivity for a broad range of system-ready instruments, open industry software, PC-standard I/O and global support, which are combined to more easily integrate test system development.

#### United States:

(tel) 800 829 4444

(fax) 800 829 4433

#### Canada:

(tel) 877 894 4414

(fax) 800 746 4866

#### China:

(tel) 800 810 0189

(fax) 800 820 2816

#### Europe:

(tel) 31 20 547 2111

#### Japan:

(tel) (81) 426 56 7832

(fax) (81) 426 56 7840

#### Korea:

(tel) (080) 769 0800

(fax) (080)769 0900

#### Latin America:

(tel) (305) 269 7500

#### Taiwan:

(tel) 0800 047 866

(fax) 0800 286 331

#### Other Asia Pacific

#### Countries:

(tel) (65) 6375 8100

(fax) (65) 6755 0042

Email: [tm\\_ap@agilent.com](mailto:tm_ap@agilent.com)

Contacts revised: 05/27/05

For more information on Agilent Technologies' products, applications or services, please contact your local Agilent office. The complete list is available at:

[www.agilent.com/find/contactus](http://www.agilent.com/find/contactus)

© Agilent Technologies, Inc. 2006

Printed in the USA, May 18th, 2006

5989-4752EN



Agilent Technologies