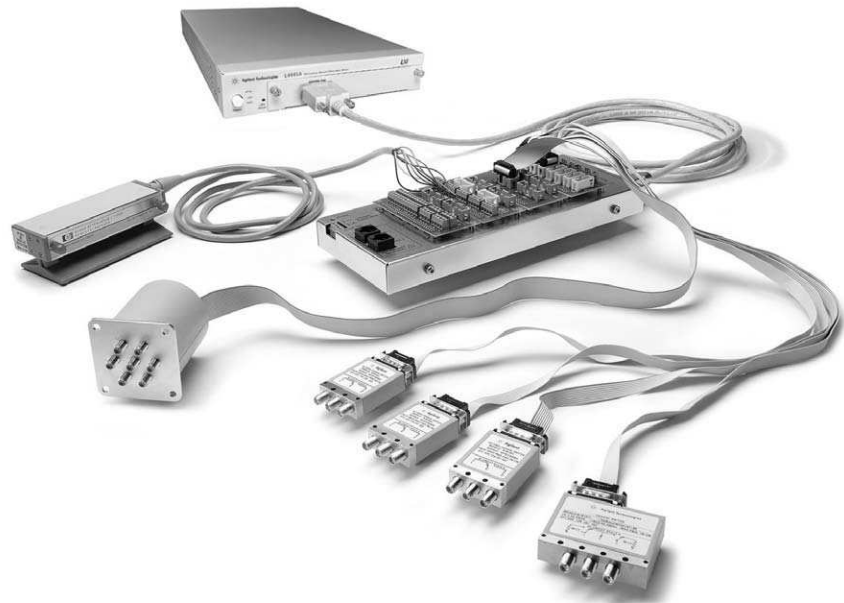


# Agilent L4445A Microwave Switch/Attenuator Driver

Data Sheet



- LXI compliance includes built-in Ethernet connectivity
- Fully-featured graphical Web interface
- Control of most popular microwave switches and attenuators
- Expandable with 34945EXT
- Distribution boards allow for easy wiring
- Switch read-back capabilities
- External power option for simultaneous switching
- Software drivers for most common programming environments

## **Microwave switch/attenuator driver offers support of most common microwave switches with distribution boards for easy configuration**

The Agilent L4445A is a LXI Class C compliant instrument that controls external switches and attenuators. With its small size and Ethernet connectivity, the switch/attenuator driver can be placed wherever your application needs it.

The Agilent L4445A provides digital outputs to control switches, attenuators, and other devices that are typically used to route signals in a high frequency system. Many of the most popular microwave switches

and attenuators are supported through the distribution boards. The distribution boards enable fast and easy connection to the microwave devices.

Using this LXI instrument, you'll get all the benefits of an Ethernet connection, instrument Web server, standard software drivers and more. The LXI standard is supported by multiple vendors, enabling lower cost of test with accelerated test integration and development.



**Agilent Technologies**

### **Microwave switch driver for easy routing of high frequency signals in your system**

The L4445A allows you to control switches, attenuators and other devices close to your device under test. The L4445A combined with the 34945EXT provides the power and control signals to drive up to 64 switch coils—that's 32 standard SPDT switches.

The L4445A can be extended by adding additional 34945EXT extenders. The first 34945EXT is powered by the L4445A. You can add up to seven additional 34945EXT extenders with user supplied power. Multiple switch operations are performed in sequential order, or for faster, simultaneous switching, you can connect an external power supply to the 34945EXT.

The digital outputs can also be used to drive LEDs for indication of the switch position. The L4445A/34945EXT also has digital inputs so that you can read back the actual position of the switch or attenuator.

The L4445A comes with a standard 9-pin connector for simple connection to the 34945EXT. The Y1150A-Y1155A distribution boards plug onto the 34945EXT and are used to route the power and control signals from the driver to the switches using user supplied cables. This enables simple connections to the external switches without a lot of complicated wiring.

The following microwave switches and attenuators are supported with the Y1150A-Y1155A distribution boards:

- N181x/U9397x series SPDT switches
- 8762/3/4 series SPDT switches (screw terminals)
- 8765x coaxial switches
- 8766x/8767x/8768x multiport switches
- 87104x/106x/L710xx/L720xx multiport switches
- 87406x series matrix switches
- 87204x/206x series multiport switches

- 87606x series matrix switches
- 87222x/L7222 transfer switches
- 849x series attenuators
- 8490x series attenuators
- Screw terminal connections

### **Ethernet connectivity enables simple connection to the network and remote access to measurements**

The Ethernet interface offers high-speed connections that allow for remote access and control. You can set up a private network to filter out unwanted LAN traffic and speed up the I/O throughput, or take advantage of the remote capabilities and distribute your tests worldwide. Monitor, troubleshoot, or debug your application remotely. Ethernet communication also can be used with the support of LAN sockets connections.

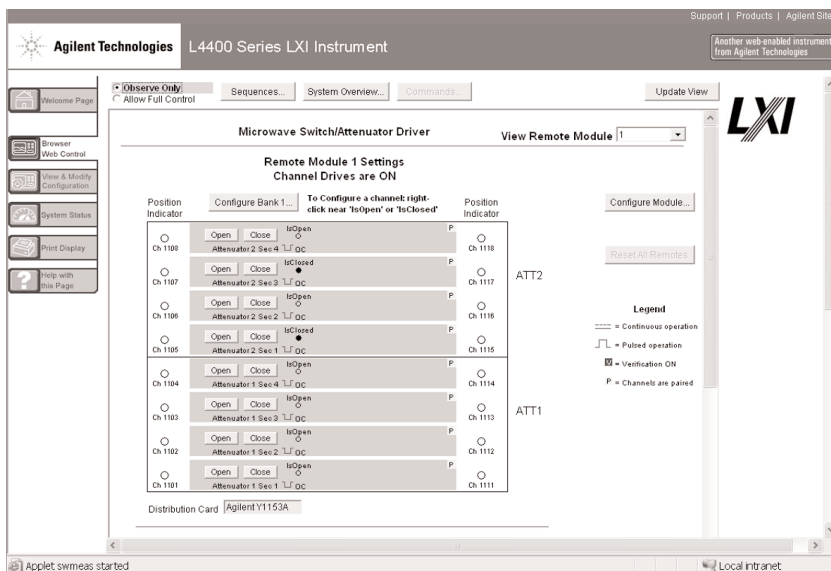
The optional GPIB interface has many years of proven reliability and can be used for easy integration into existing applications.

The L4445A ships with the Agilent E2094 I/O Libraries Suite making it easy for you to configure and integrate instruments into your system – even if your system includes instruments from multiple vendors.

**Fully-featured graphical Web interface makes it easy to set-up and troubleshoot your tests from anywhere in the world**

The built-in Web browser interface provides remote access and control of the instrument via a Java-enabled browser such as Internet Explorer. Using the Web interface, you can set up, troubleshoot, and maintain your instrument from remote locations.

- View and modify instrument setup
- Configure switch channels and switch pairs
- Open or close switches
- Send, receive and view SCPI commands
- Define and execute switch sequences
- View error queue
- Get status reports on relay cycle counts, firmware revisions, and more



**Figure 1.** The Web interface makes it easy to set up, troubleshoot and maintain your test remotely

Additionally, since the Web server is built into the instrument, you can access it on any operating system that supports the Web browser without having to install any special software. Password protection and LAN lockout are also provided to limit access for additional security.

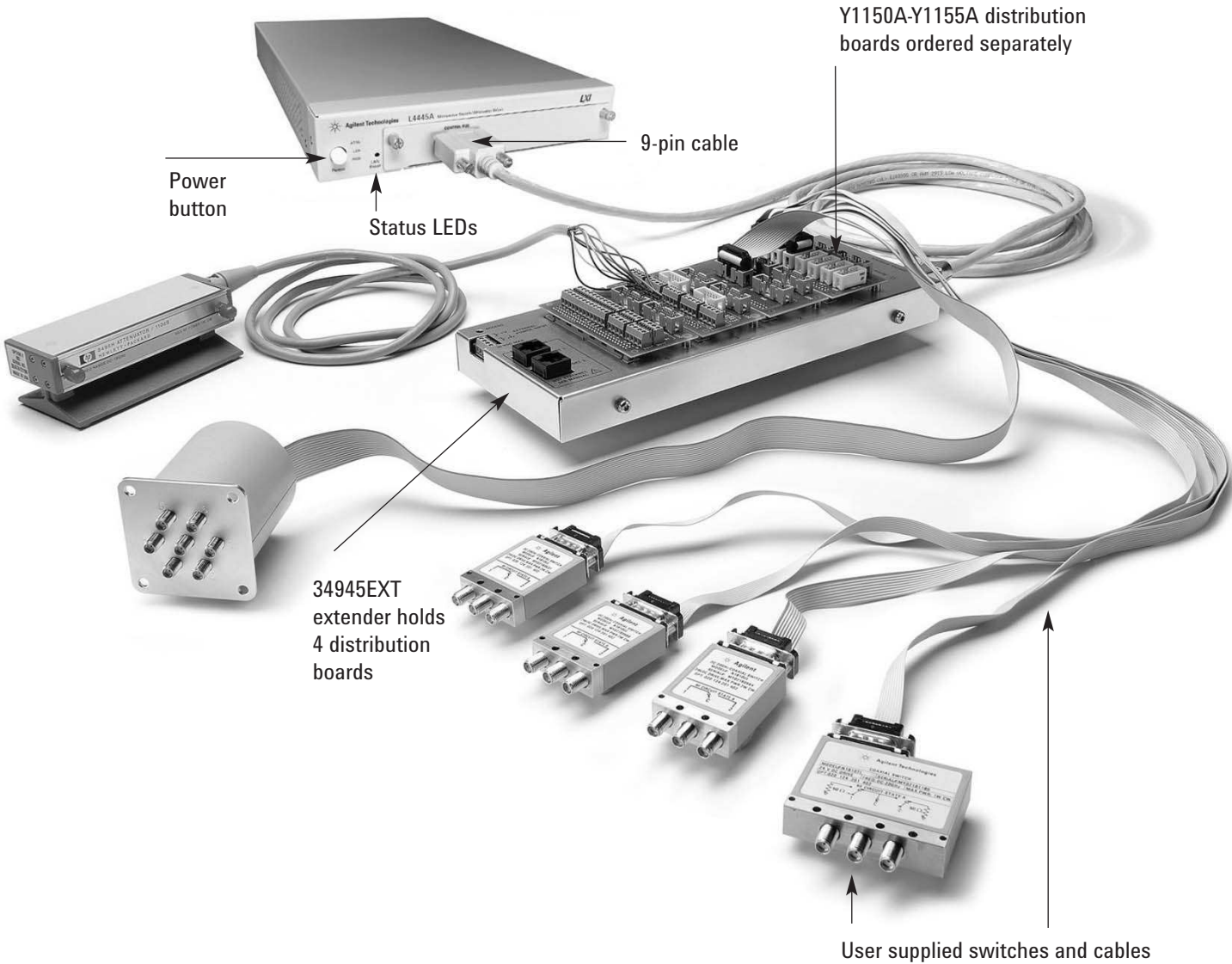
**Software for most popular programming environments**

Full support for standard programming environments ensures compatibility and efficiency. You can use direct I/O with the software you already have and know, or use standard

IVI and LabVIEW™ software drivers that provide compatibility with the most popular development environments:

- Agilent T&M Toolkit for Microsoft Visual Studio®.NET and Agilent VEE Pro
- National Instruments LabVIEW, LabWindows/CVI, TestStand, and Switch Manager
- Microsoft C/C++® and Visual Basic®

**High-performance switching wherever your application needs it**



Power button

Status LEDs

9-pin cable

Y1150A-Y1155A distribution boards ordered separately

34945EXT extender holds 4 distribution boards

User supplied switches and cables

## Product Specifications

### Specifications and Characteristics

#### 34945EXT switch drive

64 channels, low side drive mode	Driver off voltage (max)	30 V
	Driver off leakage current	500 $\mu$ A
	Driver on current (max)	600 mA
	Driver on voltage (max)	0.5 V @ 600 mA
64 channels, TTL drive mode	Hi output voltage	3 V @ I <sub>out</sub> = 2 mA
	Lo output voltage	0.4 V @ I <sub>in</sub> = 20 mA
	Lo input current	20 mA

#### 34945EXT position indicator sense inputs

Channels	64
Lo input voltage (max)	0.8 V
Hi input voltage (min)	2.5 V
Input resistance	>100 k $\Omega$ @ V <sub>in</sub> $\leq$ 5 V >20 k $\Omega$ @ V <sub>in</sub> > 5 V
Maximum input voltage	30 V

#### 34945EXT switch drive power supply (34945EXT powered by 34945A)

Voltage	24 V nominal (external power supply required for switches needing different voltages)
Current	100 mA continuous + 200 mA (15 ms pulse, 25% duty cycle)

#### 34945EXT external power connection

Voltage range	4.75 V to 30 V
Current limit	2 A

#### LED indicator (Current mode drivers)

Channels	64
Supply voltage	5 V nominal
LED drive current	5 mA nominal (prog 1-20 mA)
Driver compliance voltage	0.8 V

#### Maximum 8 34945Ext's per L4445A

## Product Specifications (continued)

### Memory

States	5 instrument states with user label in non-volatile memory
--------	--

### General specifications

Power supply	Universal 100 V to 240 V $\pm 10\%$
Power line frequency	50 Hz to 60 Hz $\pm 10\%$ automatically sensed
Power consumption	15 VA
Operating Environment	Full accuracy for 0°C to 55°C Full accuracy to 80% R.H. at 40 °C
Storage environment	-40°C to 70°C
Dimensions (H x W x L)	40.9 x 212.3 x 379.3 mm 1.61 x 8.36 x 14.93 in
34945EXT dimensions	38.1 x 114.3 x 284.5 mm 1.5 x 4.5 x 11.2 in with distribution boards installed
Weight	3.6 kg, 8.0 lbs
Safety conforms to	CSA, UL/IEC/EN 61010-1
EMC conforms to	IEC/EN 61326-1, CISPR 11
Warranty	1 year

## Product Specifications (continued)

### Software

Agilent connectivity software included	Agilent I/O Libraries Suite 14 or greater (E2094N)
--	--

### Minimum system requirements

PC hardware	Intel Pentium 100 MHz, 64 Mbyte RAM, 210 Mbyte disk space Display 800x600, 256 colors, CD-ROM drive
Operating system <sup>1</sup>	Windows <sup>®</sup> 98 SE/NT/2000/XP

### Computer interfaces

Standard LAN 10BaseT/100BaseTx
Optional IEEE 488.2 GPIB

### Software driver support for programming languages

Software drivers	IVI-C and IVI-COM for Windows NT <sup>®</sup> /2000/XP LabVIEW
------------------	---

### Compatible with programming tools and environments

Agilent	VEE Pro T&M Toolkit (reqs Visual Studio.NET)
National Instruments	TestStand Measurement Studio LabWindows/CVI LabVIEW Switch Executive
Microsoft	Visual Studio.NET <sup>®</sup> C/C++ Visual Basic 6 <sup>®</sup>

<sup>1</sup> Load I/O Libraries Version M for Windows NT support or version 14.0 for Windows 98 SE support

## Ordering information

### Example configuration:

A test system is being built that requires the following Microwave Switching:

- (qty 2) Agilent 87206B SP6T Switches
- (qty 8) Agilent N1810UL SPDT Switches

Select the quantity of distribution boards for the required switches using the ordering info below:

- Qty 2 Y1152A Distribution boards to control qty 2 87206B switches.
- Qty 1 Y1150A Distribution board to control qty 8 N1810UL switches.

Notice that each Y1152A can also drive two N181x switches. Therefore if you only needed to drive 4 N1810 switches, then you could have controlled those switches via the Y1152A distribution boards already selected.

### Here is the final recommended configuration:

- (qty 2) 87206B DC-20 GHz SP6T Switches
- (qty 8) N1810UL DC-20 GHz SPDT Switches
- (qty 1) L4445A Switch/Attenuator Driver (when ordering the L4445A, the 34945EXT is automatically added for controlling switches)
- (qty 2) Y1152A Distribution Boards
- (qty1) Y1150A Distribution Board
- Either build own cables using off-the-shelf parts, or order qty 1 Y1159A 16-to-16 pin connect kit (supplies for 2 cables) and qty 2 Y1157A 9-to-10 pin cable kit (supplies for 4 cables).

We recommend that the switch be ordered with options for 24 V coils, position indicators, and socket connectors. Since 24 V latching relays are specified, there is no need for an external power supply. The L4445A instrument can provide power for a single 34945EXT. Easy-to-build ribbon cables can be built to interface each of the switches to the Y1150A and Y1152A distribution boards. See the Application note: Configuring an RF/ Microwave Switch System (5989-2272EN) for additional configuration details.

**Ordering information (Continued)**

**L4445A Microwave Switch/  
Attenuator driver**

Includes User's guide on CD,  
test report, power cord, and  
Quick Start package

**Option - GPIB**

Adds GPIB interface

**Option 0B0**

Deletes printed manual set,  
full documentation included  
on CD ROM

**Option ABA**

English printed manual set

**L4445A Accessories**

Distribution boards are required  
for control of external switches.

One 34945EXT external driver  
required for each 64 coils –  
holds 4 distribution boards  
per 34945EXT extender

**Y1150A**

34945EXT distribution board  
for 8 N181x SPDT switches

**Y1151A**

34945EXT distribution board  
for two 87104x/106x multiport  
or 87406B matrix switches

**Y1152A**

34945EXT distribution board  
for one 87204x/206x or 87606B  
switch and two N181x switches

**Y1153A**

34945EXT distribution board  
for two 84904/5/6/7/8 or  
8494/5/6 step attenuators

**Y1154A**

34945EXT distribution board  
for two 87222 transfer switches  
and six N181x SPDT switches

**Y1155A**

34945A distribution board  
w/ generic screw terminals  
for driving 16 switch coils

**Cable kits for connecting  
switches to distribution boards:**

**Y1157A**

9-to-10 pin cable kit for  
Y1150A, Y1152A, Y1154A -  
supplies to build 4 cables

**Y1158A**

10-to-10/10-to-14 pin cable kit  
for Y1153A, Y1154A -  
supplies to build 2 cables

**Y1159A**

16-to-16 pin cable kit for  
Y1150A/51A/52A/53A/54A/55A-  
supplies to build 2 cables

**Other accessories**

**Y1160A**

**Rack mount kit for  
L4400 series instruments-  
racks 2 instruments side-by-side  
with sliding tray**

For additional information  
please visit:

<http://www.agilent.com/find/L4445A>



### Agilent Email Updates

[www.agilent.com/find/emailupdates](http://www.agilent.com/find/emailupdates)  
Get the latest information on the products and applications you select.



### Agilent Direct

[www.agilent.com/find/agilentdirect](http://www.agilent.com/find/agilentdirect)  
Quickly choose and use your test equipment solutions with confidence.



### Agilent Open

[www.agilent.com/find/open](http://www.agilent.com/find/open)  
Agilent Open simplifies the process of connecting and programming test systems to help engineers design, validate and manufacture electronic products. Agilent offers open connectivity for a broad range of system-ready instruments, open industry software, PC-standard I/O and global support, which are combined to more easily integrate test system development.



### LXI

[www.lxistandard.org](http://www.lxistandard.org)  
LXI is the LAN-based successor to GPIB, providing faster, more efficient connectivity. Agilent is a founding member of the LXI consortium.

## Related Agilent literature

### Data Sheets

**5988-6302EN**

Agilent VEE Pro

**5989-1441EN**

Agilent W1140A-TKT

T&M Toolkit 2.0 with  
Test Automation

**5989-1439EN**

Agilent E2094N  
I/O Libraries Suite 14

**5989-2272EN**

Configuring an  
RF/Microwave Switch System

## Remove all doubt

Our repair and calibration services will get your equipment back to you, performing like new, when promised. You will get full value out of your Agilent equipment throughout its lifetime. Your equipment will be serviced by Agilent-trained technicians using the latest factory calibration procedures, automated repair diagnostics and genuine parts. You will always have the utmost confidence in your measurements.

Agilent offers a wide range of additional expert test and measurement services for your equipment, including initial start-up assistance onsite education and training, as well as design, system integration, and project management.

For more information on repair and calibration services, go to:

[www.agilent.com/find/removealldoubt](http://www.agilent.com/find/removealldoubt)

## www.agilent.com

For more information on Agilent Technologies' products, applications or services, please contact your local Agilent office. The complete list is available at:

[www.agilent.com/find/contactus](http://www.agilent.com/find/contactus)

### Americas

Canada	(877) 894-4414
Latin America	305 269 7500
United States	(800) 829-4444

### Asia Pacific

Australia	1 800 629 485
China	800 810 0189
Hong Kong	800 938 693
India	1 800 112 929
Japan	81 426 56 7832
Korea	080 769 0800
Malaysia	1 800 888 848
Singapore	1 800 375 8100
Taiwan	0800 047 866
Thailand	1 800 226 008

### Europe

Austria	0820 87 44 11
Belgium	32 (0) 2 404 93 40
Denmark	45 70 13 15 15
Finland	358 (0) 10 855 2100
France	0825 010 700
Germany	01805 24 6333*
	*0.14€/minute
Ireland	1890 924 204
Italy	39 02 92 60 8484
Netherlands	31 (0) 20 547 2111
Spain	34 (91) 631 3300
Sweden	0200-88 22 55
Switzerland (French)	41 (21) 8113811(Opt 2)
Switzerland (German)	0800 80 53 53 (Opt 1)
United Kingdom	44 (0) 118 9276201

Other European Countries:

[www.agilent.com/find/contactus](http://www.agilent.com/find/contactus)

Revised: May 7, 2007

Product specifications and descriptions in this document subject to change without notice.

© Agilent Technologies, Inc. 2007  
Printed in USA, May 17, 2007  
5989-4828EN



Agilent Technologies