

## Agilent E9524A MicroBlaze Trace Toolset

Data Sheet

### **Easily trace MicroBlaze software execution with Agilent's MicroBlaze trace core and inverse assembler**

Agilent Technologies and Xilinx have developed a logic analysis trace solution for Xilinx's MicroBlaze embedded processor that overcomes the traditional difficulties of tracing software execution using a logic analyzer. Combining the capabilities of a MicroBlaze inverse assembler with a specialized trace core simplifies measurement setup and reduces the number of pins required. In addition, the trace core overcomes the lack of visibility you encounter when you employ cache and pipelining, and unlocks the power of the logic analyzer to make accurate measurements. You get easy access to the insight you need to increase the quality of your design and ensure its timely completion.

### **MicroBlaze inverse assembly**

For PC board layout, you enable the inverse assembler by first choosing the level of visibility you need and then routing the corresponding MicroBlaze signals to pins. The MicroBlaze inverse assembler allows a choice of instruction-side and/or data-side decoding, and can accommodate variations of bus widths and different combinations of the signals to allow maximum flexibility. For example, instruction-side decoding would require routing at least the MicroBlaze program counter signals (PC\_Ex) and the

valid cycle signal (Valid\_Instr) to pins. Routing these signals to a specified layout allows for fast connection to a logic analyzer via mictor, Samtec, or soft touch probing. Or, you can connect the logic analyzer to these signals with individual flying leads attached to a berg strip or header.

Because FPGAs with MicroBlaze cores are reprogrammable, they can be traced late in the development cycle. As long as you have reserved a sufficient number of pins for debug, you can route required MicroBlaze signals to a specified pinout without PC board changes.

The Agilent inverse assembler for MicroBlaze reconstructs program flow by capturing the address of each executed instruction and looking up the associated opcode in the OMF (object module format) file. It



**Agilent Technologies**

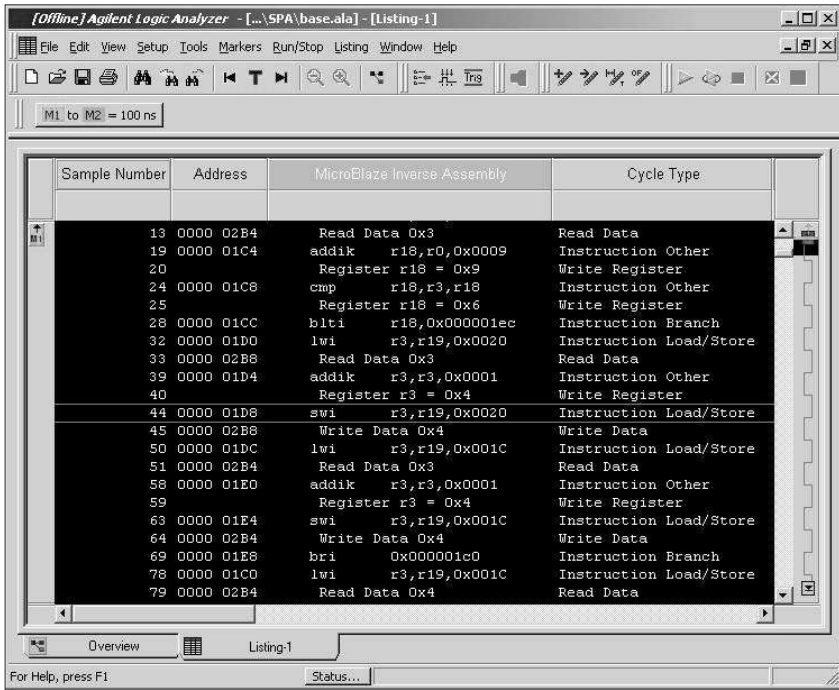
then decodes the opcode into a MicroBlaze instruction, as shown in **Figure 1**.

Agilent logic analyzers also come standard with a source correlation window so you can setup a measurement at the assembly or source level.

### Debug using fewer pins

Pins available for debug are often scarce, so the inverse assembler includes a capability that reduces the number of required pins. Although the MicroBlaze architecture has 32 PC\_Ex signals, the number of external signals needed for capturing a logic analysis trace is typically significantly less than 32.

This reduction is accomplished using two different techniques. First, any upper address bits that are static do not need to be traced, so one pin can be eliminated for each static upper address bit in the program counter. You can specify this information via the logic analysis user interface. Second, the lower



**Figure 1.** Agilent’s MicroBlaze inverse assembler reconstructs program flow. Results may be displayed in waveform or listing displays.

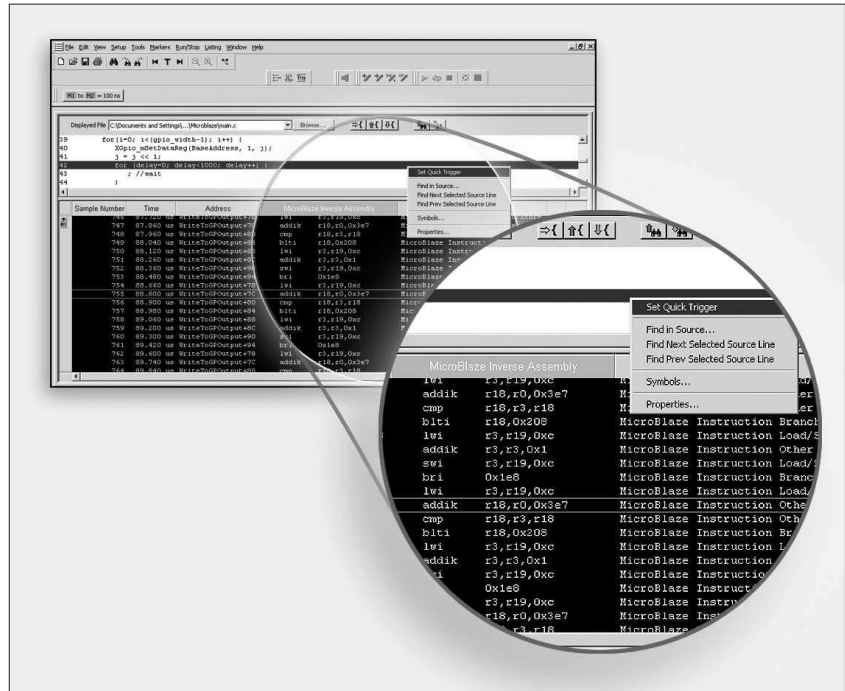
two address bits also do not need to be traced, since all instructions start on 4-byte boundaries. Using these techniques, tracing software execution of a 1-Mbyte program requires only 18 pins (plus 1 clock pin and 1 control

pin). Agilent’s MicroBlaze trace core provides further pin reduction by using a 2:1 time-domain-multiplexing capability in conjunction with the Agilent logic analyzer. This enables an additional 50% reduction in pins required for trace.

**Correlate assembly mnemonics with high-level source code, even with cache enabled**

MicroBlaze execution can be tracked deterministically, even when cache is enabled, since captured signals are routed from the execution stage of the MicroBlaze pipeline. This also makes the trace impervious to unused prefetches.

Agilent logic analyzers come standard with a source correlation window. By reading a symbol file (.elf format), the logic analyzer can associate captured addresses with the high-level software mapped to that address. When you step through assembly instructions, the equivalent line in the source code for this instruction is also highlighted. Or, step through high-level source code while the logic analyzer simultaneously displays the associated instruction mnemonics in the lower window. Right click in the source code to quickly set up the logic analysis trigger (trace specification) for the next acquisition, as shown in **Figure 2**.

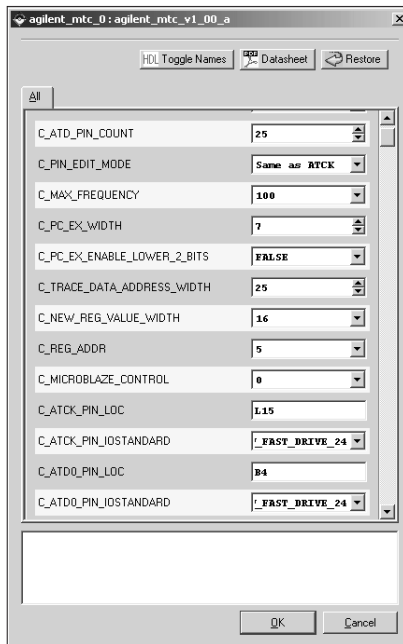


**Figure 2.** Agilent logic analyzers come standard with a source correlation window that provides correlation between assembly mnemonics and high-level source code. One-click trigger specification simplifies triggering on a specific line in the source code.

**MicroBlaze trace core**

The MicroBlaze trace core (MTC) reduces setup time and the number of pins required to trace a MicroBlaze processor instance. The MTC core, co-developed by Agilent and Xilinx, works exclusively with the Xilinx Platform Studio, which is included with the

Xilinx embedded development kit (EDK) design flow. It allows you to graphically add an MTC core to your design. Core parameters include data values, status signals, pin compression using time division multiplexing, pin location, and I/O standard.



**Figure 3.** Agilent’s MicroBlaze trace core (MTC) is inserted in your design using the tools supplied in Xilinx’s EDK. When you select the MTC core to insert it, you can specify all of the relevant parameters of the core graphically to make it specific to your design.

The MTC core works together with Agilent’s FPGA dynamic probe logic analyzer software to provide four key benefits:

1. The MTC core connects required MicroBlaze signals to FPGA pins (pre-synthesis).
2. The core can be configured to reduce the number of pins required by a factor of two. Two MicroBlaze signals are time-division-multiplexed onto a single pin with data valid on the rising edge of the clock for signal one and data valid on the falling edge of the clock for signal two. A demux clocking mode in the logic analyzer decompresses the information and splits it into two separate logic analysis channels.
3. The MTC core includes auto pin-mapping that reduces initial setup time from hours to seconds and eliminates manual errors that can happen during the PC board layout. Tracing MicroBlaze can be done late in product

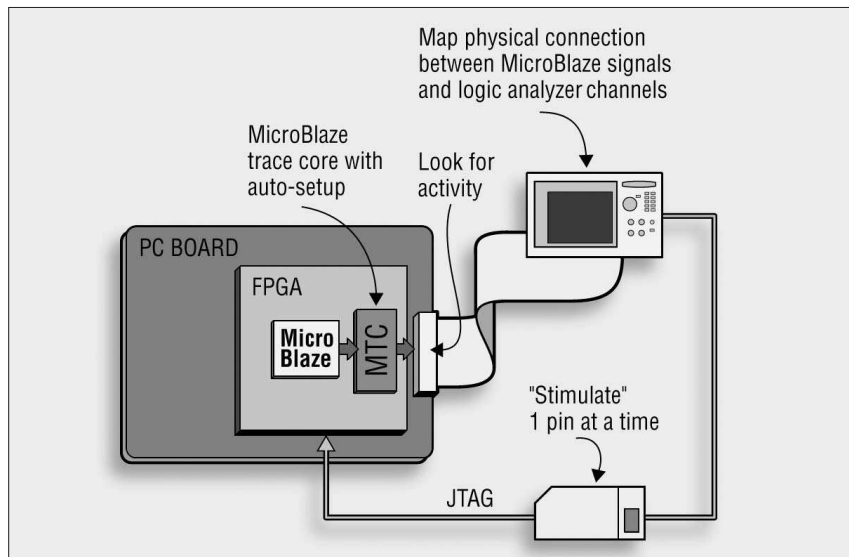
development, as the MTC core eliminates the need to layout a PC board with a specific MicroBlaze signal pattern (see figure 4).

4. Via JTAG, the logic analyzer sends an auto setup message to the MTC core. The core outputs a training pattern on a specific MTC pin. The logic analyzer looks for this training pattern across its channels and discovers which channel is connected to the MTC pin. By repeating this process for each MTC output pin, the logic analyzer learns how each MTC core input is routed through the core to pins and through connectors and/or probes to the logic analyzer.

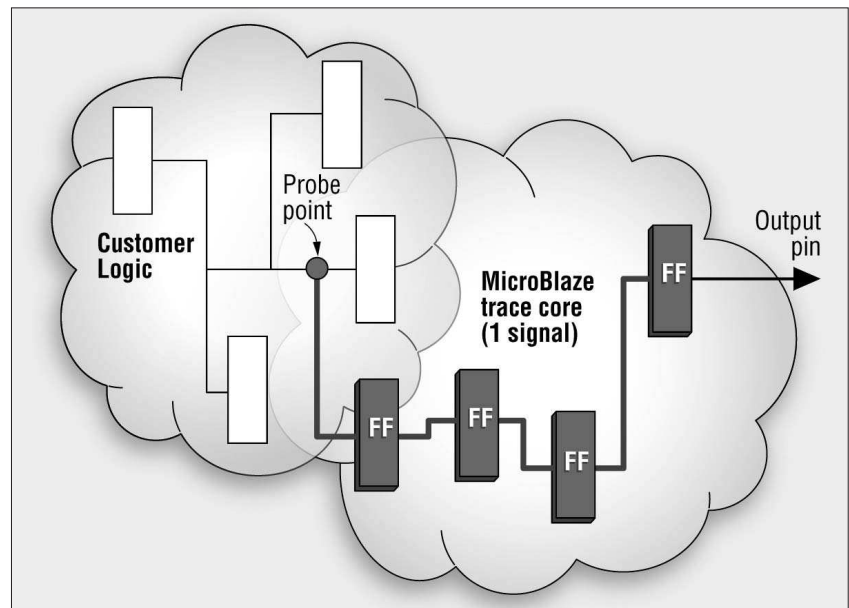
4. The MTC core, constructed entirely of flops and LUTs, uses a multi-stage pipeline (typically four stages), as shown in **Figure 5**, to minimize the core's impact on the timing of your design. MTC cores are designed to be very small in terms of device resource consumption. An MTC core in a XC2V3000 device consumes roughly 1% of the LUTs and flops.

Agilent logic analyzers are equipped with precise time resolution, allowing them to correlate MicroBlaze execution history with other software or hardware events acquired simultaneously. This allows you to quickly isolate problems associated with hardware and software interaction. Agilent's royalty-free MTC core, distributed as part of the Xilinx EDK, minimizes the time to setup the measurement and eliminates the need for a specific PC board layout.

For more information visit [www.agilent.com/find/microblaze](http://www.agilent.com/find/microblaze).



**Figure 4.** Agilent's MTC reduces the setup time for an initial trace measurement. You can literally connect a logic analyzer to a connector with MTC core outputs routed to it, and within seconds, the logic analyzer becomes ready to take a MicroBlaze trace measurement. In addition, the MTC core's pin compression technology reduces the number of required pins for tracing MicroBlaze processors by 50%.



**Figure 5.** The thick lines show the flops and routes added by the MTC core. Since there is a flop in the fabric in addition to one at the I/O buffer, the router can use timing solely within the MTC core to move a signal across the chip, thereby minimizing the impact of the MTC core on the design's timing.

## Quick tour of the application

### Design step 1:

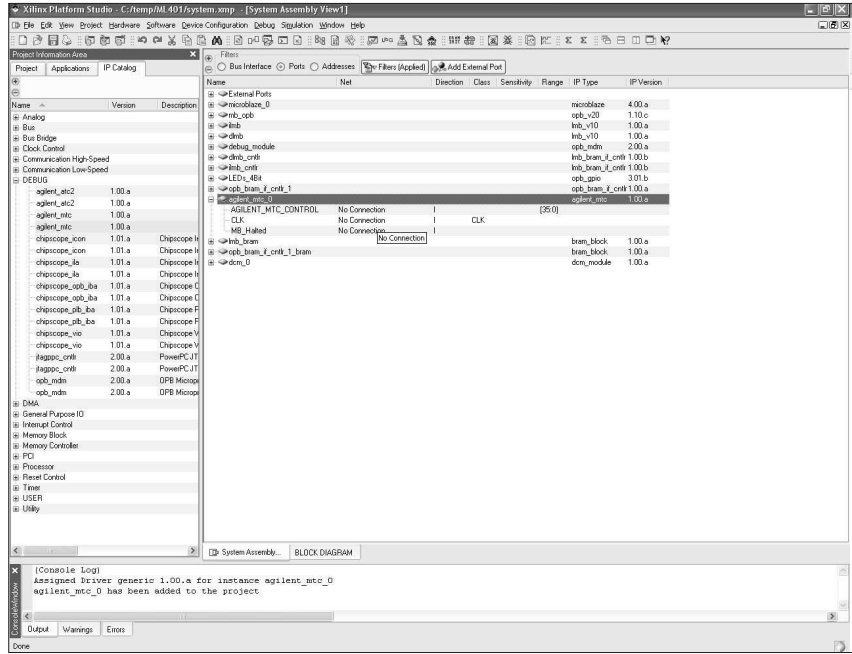
#### Create and instantiate an MTC core

Use Xilinx Platform Studio to select the MTC core and specify the parameters that best match your design needs. Parameters include data compression, status signals, and location.

### Design step 2:

#### Implement your Xilinx FPGA design with MicroBlaze and MTC cores in place

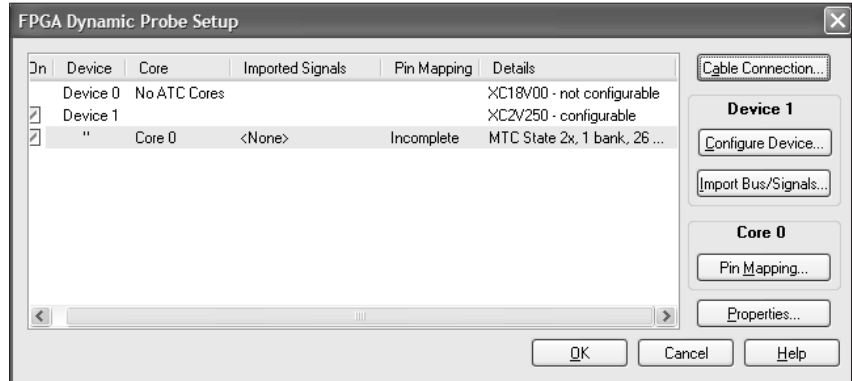
Once the design is ready for prototyping in the FPGA, use the Xilinx tools to implement the design (generate the bitstream) including the MicroBlaze and MTC cores. You're then ready to set up the logic analyzer for measurement.



### Measurement setup step 1:

#### Activate FPGA probe: Identify MTC core

The FPGA dynamic probe application allows you to query the MTC core (via JTAG) and quickly set up the logic analyzer for a MicroBlaze measurement. It establishes a connection between the logic analyzer and a Xilinx cable, and shows what devices are present on the JTAG scan chain. You can define core and device names.

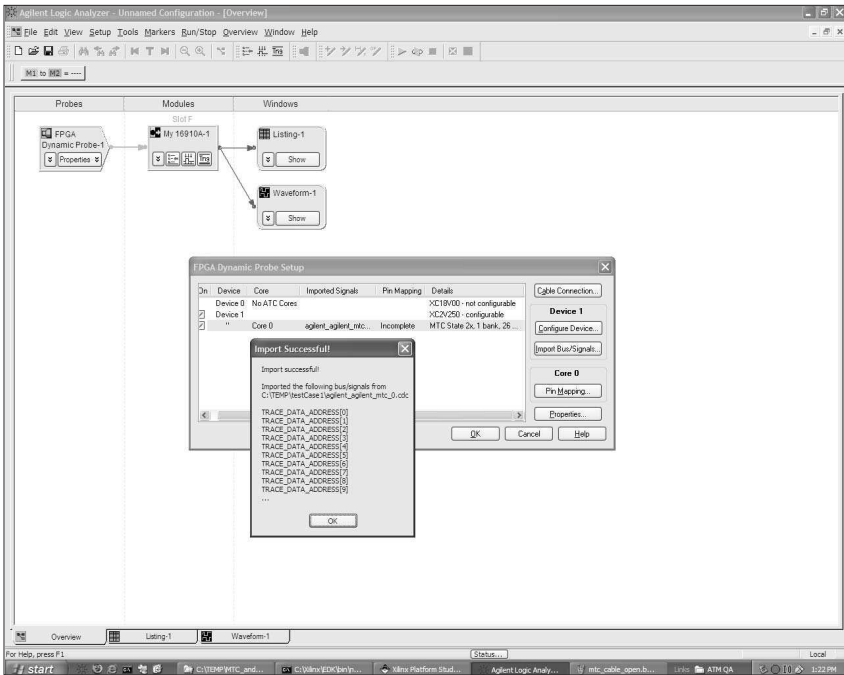


## Quick tour of the application (Continued)

### Measurement setup step 2:

#### Import signal names

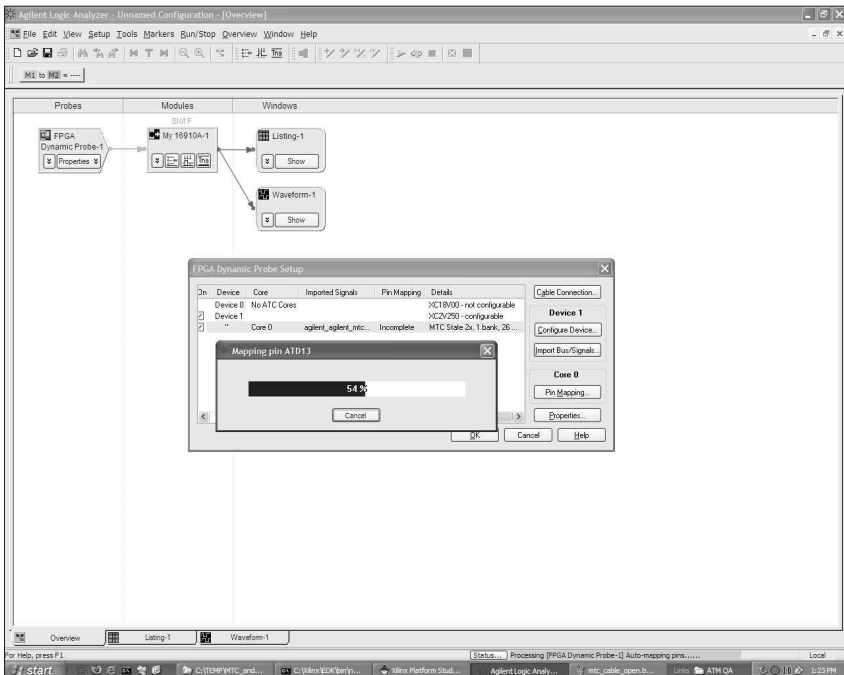
The FPGA dynamic probe application reads a .cdc file produced by the Xilinx EDK. The names of your MicroBlaze signals will now automatically show on your logic analyzer listing and waveform windows.



### Measurement setup step 3:

#### Map pins automatically in seconds!

Mapping the signals from the pins of the device to the proper logic analyzer channels is often a time-consuming and error-prone task. The MicroBlaze trace core includes an automatic pin mapping feature that reduces this tedious task to a few seconds and automates the entire process to eliminate errors.

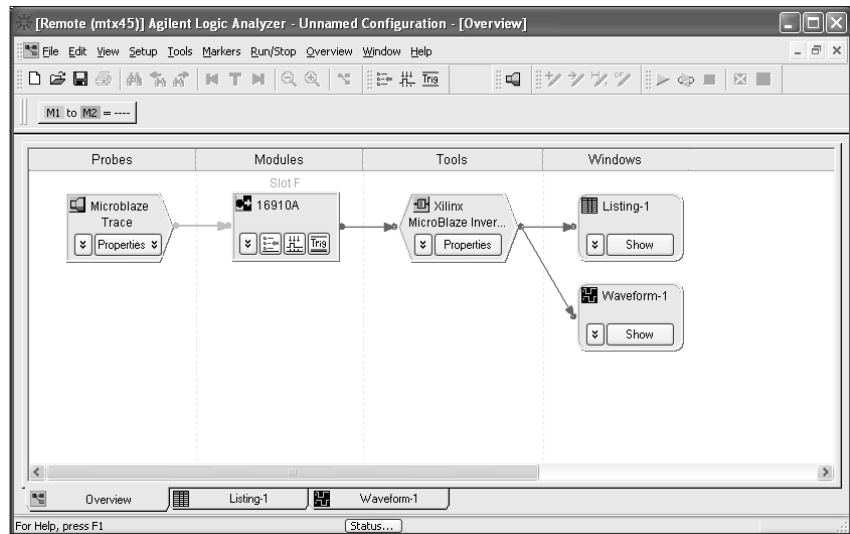


## Quick tour of the application (Continued)

### Measurement setup step 4:

#### Load the MicroBlaze inverse assembler:

Load the MicroBlaze configuration file and inverse assembler from the logic analyzer application software.



### Setup complete:

#### Make measurements!:

You're now ready to make trace measurements on your MicroBlaze embedded processor.

## E9524A Specifications and Characteristics

### Supported logic analyzers

Portable and PC-hosted logic analyzers	16800 Series, 1690 Series, 1680 Series
Modular logic analysis systems	16900 Series with one or more state/timing modules: A single node-locked license will enable all modules within a 16900 Series system
Triggering capabilities	Determined by logic analyzer
Supported Xilinx FPGA families	Virtex-4, Virtex-II Pro series, Virtex-II series, Spartan-3 series
Supported Xilinx cables (required)	Parallel 3 and 4, Platform Cable USB
Supported probing mechanisms	Soft touch (34-channel and 17-channel), Mictor, Samtec, Flying lead

### FPGA dynamic probe software application

Maximum number of devices supported on a JTAG scan chain	256
Maximum number of ATC2 and MTC cores supported per FPGA device	15

### MicroBlaze trace core characteristics

Number of output signals	User definable: Clock line plus 4 to 128 signals in 1 signal increments
Inputs	User definable: Program Counter, Trace Data Address, Control Signals
Compression	Optional 2X pin compression via time division multiplexing. Logic analyzer decompresses the data stream
FPGA Resource consumption	Consumes no BUFGs, DCM or Block RAM resources. See resource calculator at <a href="http://www.agilent.com/find/MicroBlaze">www.agilent.com/find/MicroBlaze</a>

### Compatible design tools

EDK (Embedded Development Kit)	1680, 1690, 16800, 16900 Series SW Version	Primary New Features
8.2i	3.5 or higher	Support for MTC core using EDK flow

Additional information available via the Internet: [www.agilent.com/find/MicroBlaze](http://www.agilent.com/find/MicroBlaze) and [www.agilent.com/find/fpga\\_FAQ](http://www.agilent.com/find/fpga_FAQ).

## Ordering Information

The Agilent E9524A MicroBlaze trace toolset includes:

### Option 10:

- Entitlement certificate for perpetual node locked license
- CD with application software

### Option 20:

- Entitlement certificate for perpetual floating license
- CD with application software

## Related Literature

Publication Title	Publication Type	Publication Number
<i>Agilent Technologies 16900 Series Logic Analysis Systems</i>	Color brochure	5989-0420EN
<i>Agilent Technologies Measurement Modules for the 16900 Series</i>	Data sheet	5989-0422EN
<i>Probing Solutions for Agilent Technologies Catalog Logic Analyzers</i>	Catalog	5968-4632E
<i>Agilent 16800 Series Logic Analyzers</i>	Data sheet	5989-5063EN
<i>Agilent 16800 Series Logic Analyzers</i>	Color Brochure	5989-5062EN
<i>Agilent 1680 and 1690 Series Logic Analyzers</i>	Data Sheet	5988-2675EN
<i>Planning Your Design for Debug: FPGA Dynamic Probe</i>	Design Guide	5989-1593EN

For copies of this literature, contact your Agilent representative or visit [www.agilent.com/find/logic](http://www.agilent.com/find/logic)



### Agilent Email Updates

[www.agilent.com/find/emailupdates](http://www.agilent.com/find/emailupdates)

Get the latest information on the products and applications you select.



### Agilent Direct

[www.agilent.com/find/quick](http://www.agilent.com/find/quick)

Quickly choose and use your test equipment solutions with confidence.



[www.agilent.com/find/open](http://www.agilent.com/find/open)

Agilent Open simplifies the process of connecting and programming test systems to help engineers design, validate and manufacture electronic products. Agilent offers open connectivity for a broad range of system-ready instruments, open industry software, PC-standard I/O and global support, which are combined to more easily integrate test system development.

## Remove all doubt

Our repair and calibration services will get your equipment back to you, performing like new, when promised. You will get full value out of your Agilent equipment throughout its lifetime. Your equipment will be serviced by Agilent-trained technicians using the latest factory calibration procedures, automated repair diagnostics and genuine parts. You will always have the utmost confidence in your measurements.

Agilent offers a wide range of additional expert test and measurement services for your equipment, including initial start-up assistance onsite education and training, as well as design, system integration, and project management.

For more information on repair and calibration services, go to

[www.agilent.com/find/removealldoubt](http://www.agilent.com/find/removealldoubt)

## [www.agilent.com](http://www.agilent.com)

For more information on Agilent Technologies' products, applications or services, please contact your local Agilent office. The complete list is available at:

[www.agilent.com/find/contactus](http://www.agilent.com/find/contactus)

### Phone or Fax

#### United States:

(tel) 800 829 4444  
(fax) 800 829 4433

#### Canada:

(tel) 877 894 4414  
(fax) 800 746 4866

#### China:

(tel) 800 810 0189  
(fax) 800 820 2816

#### Europe:

(tel) 31 20 547 2111

#### Japan:

(tel) (81) 426 56 7832  
(fax) (81) 426 56 7840

#### Korea:

(tel) (080) 769 0800  
(fax) (080) 769 0900

#### Latin America:

(tel) (305) 269 7500

#### Taiwan:

(tel) 0800 047 866  
(fax) 0800 286 331

#### Other Asia Pacific Countries:

(tel) (65) 6375 8100  
(fax) (65) 6755 0042  
Email: [tm\\_ap@agilent.com](mailto:tm_ap@agilent.com)

Revised: 09/14/06

Product specifications and descriptions in this document subject to change without notice.

© Agilent Technologies, Inc. 2006  
Printed in USA, September 28, 2006  
5989-5187EN



**Agilent Technologies**