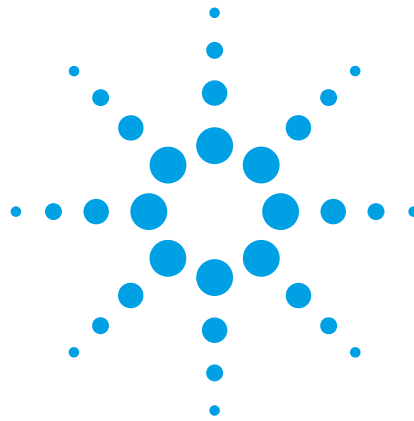


Agilent N4916A De-Emphasis Signal Converter

Data Sheet

Version 1.1



De-emphasis signal converter N4916A

De-Emphasis Signal Injection Enables Robust Receiver and Board Designs:

- Industry-first de-emphasis signal converter
- Variable de-emphasis post-cursor up to 12 dB in 0.1 dB steps
- Differential outputs
- Supports data rates up to 13.5 Gb/s
- Convenient operation with integrated user interface for the Agilent J-BERT N4903A and the 81141/81142A serial pulse data generators
- Worst-case testing with jitter feed-through capability
- Simple upgrade for installed Agilent equipment



Agilent Technologies

Industries First De-Emphasis Signal Converter

Robust Receiver Designs

The Agilent N4916A de-emphasis signal converter enables design and test engineers to accurately characterize gigabit serial ports and channels that operate with de-emphasized signals. This results in more robust receiver designs, with reliable operation in real PC board environments.

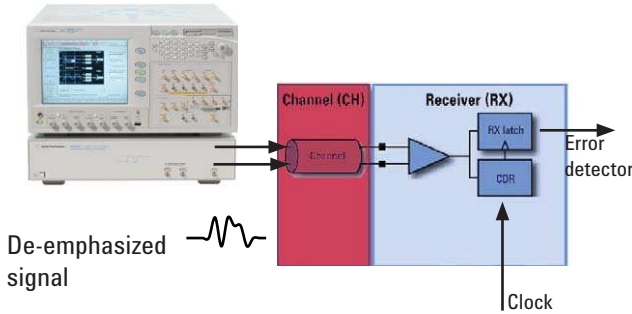


Figure 1: The de-emphasis signal converter allows emulating a transmitter by varying the de-emphasis in a wide range. This enables to check if the receiver works properly with a real-world channel that generates ISI (Inter Symbol Interference) effects. Alternatively injecting de-emphasized signals allows minimizing the ISI effects caused by the test board environment, helpful when testing receivers with most ideal inputs signal conditions.

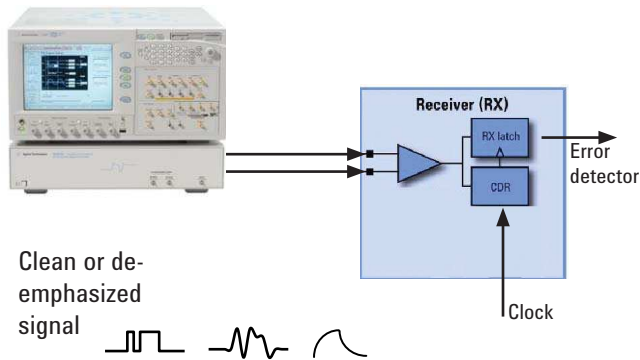


Figure 2: When the receiver is tested directly, the de-emphasized signal can be used to characterize if the receiver works properly with over- and under-compensation of channel effects. Jitter can be added on top for worst case stress testing of the receiver port.

De-emphasis is a commonly used technique for transmitting electrical signals at gigabit data rates to compensate for signal degradations caused by printed circuit boards, e.g. by motherboards, add-in cards or backplanes.

The most popular high-speed electrical standards require transmitter de-emphasis, sometimes also called pre-emphasis. These standards are: PCI Express, SATA 3 Gb/s, fully buffered DIMM, Hypertransport, CEI, and 10 Gb Ethernet.

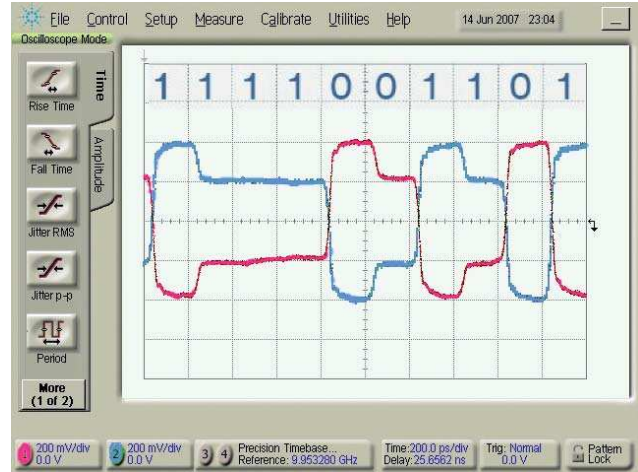


Figure 3: De-emphasized differential signal generated with the N4916A and the J-BERT N4903A at 5 Gb/s data rate, 400 mV, 6 dB de-emphasis. Screen shot captured with an Agilent 86100C DCA-J with 70 GHz remote sampling module 86118A.

User Interface

The N4916A de-emphasis signal converter can be controlled from the graphical user interface of the J-BERT N4903A high-performance serial BERT and the 81141A/81142A serial pulse data generators.

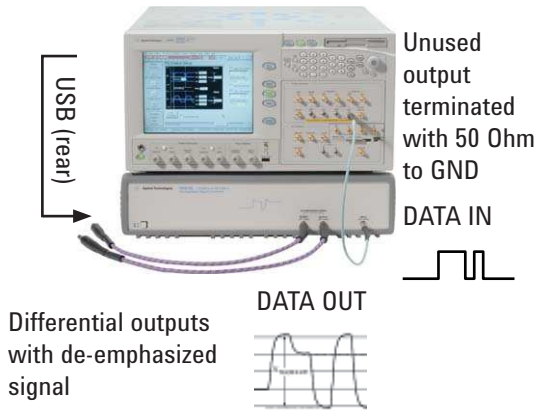


Figure 4: A configuration example for generating a differential de-emphasis signal when controlling the N4916A with the J-BERT N4903A.

The de-emphasis signal parameters can be controlled via the user interface of the Agilent J-BERT N4903A or 81141/81142A serial pulse data generators.

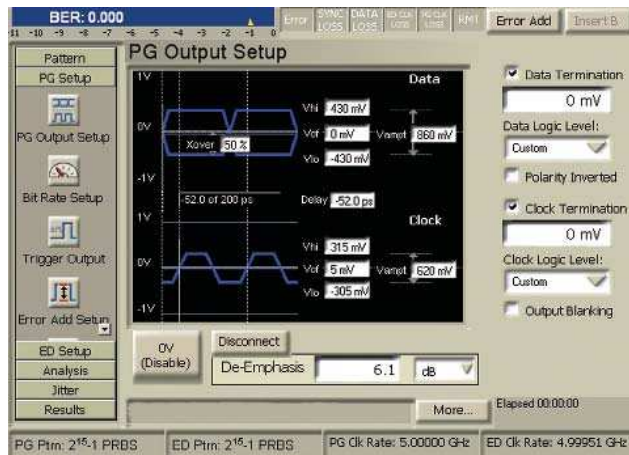


Figure 5: The de-emphasis amplitude can be set conveniently as dB or % value in the pattern generator output setup window.

Specifications



Figure 6: Front panel connectors of N4916A

De-emphasized Signal Output (OUTPUT)

Table 1: Output characteristics. All timing parameters are measured at ECL levels.

Range of operation	1.5 Gb/s to 13.5 Gb/s (12.5 Gb/s max. with J-BERT N4903A)
Format	NRZ
Output amplitude	Single-ended: 100 mV to 0.8 V, 5 mV resolution Differential: 200 mV to 1.6 V, 10 mV resolution
Output voltage window	-1.2 V to +1.8 V if terminated to GND. Addresses PECL (3.3 V) terminated to +1.3 V, ECL terminated to -2 V, LVDS, CML.
De-emphasis amplitude ratio of post-cursor	0 dB to 12.0 dB in 0.1 dB steps. Entry in dB or %.
Transition time	< 30 ps (20% to 80%) typical
Total jitter	< 30 ps peak-peak typical (with jitter injection disabled in J-BERT and 81141/81142A)
External termination voltage	-2 V to +3V ¹⁾
Jitter feed-through	Yes
Interface	Differential or single-ended, DC-coupled, 50 Ω. Terminate unused output.
Connector	2.4 mm, female

1) For positive termination voltage or termination GND, external termination voltage must be less than 3 V below VOH. For negative termination voltage, the external termination voltage must be less than 2 V below VOH. The external termination voltage must be less than 3 V above VOL.

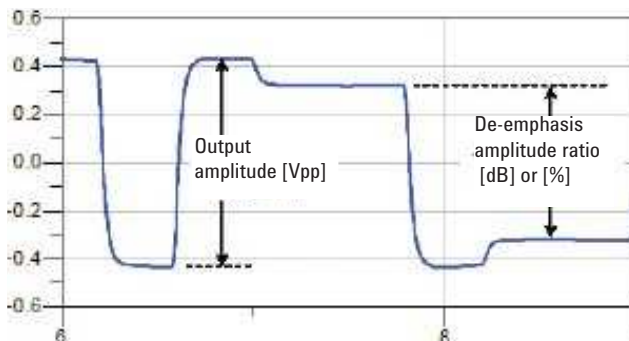


Figure 7: Definition of nominal output voltage and de-emphasis amplitude

Data Input (INPUT)

Signals have to be used from DATA OUT of the J-BERT N4903A or the 81141/2A serial pulse data generator. The unused output has to be terminated with 50 Ω to GND.

Table 2: Input characteristics

Levels	Automatically handled by generator
Mark density of input pattern	45 % to 55 %
Interface	Single-ended, DC-coupled, 50 Ω to Ground
Connector	2.4 mm, female

General Characteristics

Table 3: Mainframe characteristics

Operating temperature	5 °C to 40 °C
Storage temperature	-40 °C to + 70 °C
Operating humidity	95 % relative humidity non- condensing
Storage humidity	50% relative humidity
Power requirements	100-240 Vac, ± 10%, 50-60 Hz; 100-120 Vac, ± 10%, 400 Hz.
Power consumption	170 VA max.
Physical dimensions	Width: 426 mm Height: 89 mm Depth: 521 mm
Weight (net)	10 kg
Weight (shipping max)	12.5 kg
Sound power level	LWA < 55 dB (A) according to ISO 77795
Recommended re-calibration period	1 year. See order instruc- tions for calibration services.
Warranty period	1 year return to Agilent. See order instructions for extended warranty.

Rear Panel Connectors

USB 2.0, power



Figure 8: Rear panel of the N4916A

Remote Control Interfaces

Via USB 2.0 to the controlling instruments N4903A or 81141/2A. These offer GPIB (IEEE 488), LAN, and USB 2.0

Remote Control Languages

SCPI or via the web server of the Agilent J-BERT N4903A or the 81141/2A.

Regulatory Standards

Safety

IEC 61010-1:2001; EN 61010-1:2001;
CAN/CSA-C22.2 No. 61010-1-04; ISA – 82.02.01: 2004
UL 61010-1: 2004

EMC

IEC 61326-1:1997 + A1: 1998;
EN 61326-1:1997 + A1: 1998

Quality Management

ISO 9004, ISO 14000

Software Control

These software revisions are a pre-requisite to control the N4916A de-emphasis signal converter:
J-BERT N4903A requires SW revision 4.8 or later.
81141/2A requires SW revision 4.8 or later.
See www.agilent.com/find/n4916 for software downloads.

Specification Assumption

The specifications in this document describe the instrument's warranted performance. Non-warranted values are described as typical. All specifications are valid in a temperature range from 5 °C to 40 °C ambient temperatures after a warm-up phase of 30 minutes. If not otherwise stated, all inputs and outputs need to be terminated with 50 Ω to Ground. All specifications, if not otherwise stated, use the recommended cable set N4910A (2.4 mm, 24" matched pair) and the N4915A-004 2.4 mm cable from the generator output to the de-emphasis signal converter input.

Order Instructions

De-emphasis signal converter

N4916A

Includes one 50 Ω termination (SMA), one 2.4 mm to SMA adapter, a USB cable, a commercial calibration report and certificate ("UK6"), and a getting started guide.

Warranty

Extended warranty

R1280A

Calibration

Calibration services

R1282A

Productivity assistance

Remote or on-site
Productivity assistance

R1380-N49xx
PS-S20 and PS-S20-02

Recommended accessories

One 2.4 mm cable (m-m)
2.4 mm cable kit (matched pair)
Rack mount kit

N4915A-004
N4910A
81110A-1CM



Figure 9: 2.4 mm cable N4915A-004 for connecting N4916A

Related Literature

J-BERT N4903A
Data Sheet

81141/2A Serial Pulse
Data Generator
Data Sheet

De-emphasized Signal Generation
with the Agilent N4916A
De-Emphasis Signal Converter
Product Note

Pub. No. www.agilent.com

5989-2899EN

5989-3052EN

5989-7193EN

 www.agilent.com/find/n4916

Product specifications and descriptions in this document are subject to change without notice.

For the latest version of this document, please visit our website at www.agilent.com/find/n4916 and go to the Key Library Information and insert the publication number (**5989-6062EN**) into the search engine.

Agilent Email Updates

www.agilent.com/find/emailupdates

Get the latest information on the products and applications you select.

Agilent Open

www.agilent.com/find/open

Agilent Open simplifies the process of connecting and programming test systems to help engineers design, validate and manufacture electronic products. Agilent offers open connectivity for a broad range of system-ready instruments, open industry software, PC-standard I/O and global support, which are combined to more easily integrate test system development.

Remove all doubt

Our repair and calibration services will get your equipment back to you, performing like new, when promised. You will get full value out of your Agilent equipment throughout its lifetime. Your equipment will be serviced by Agilent-trained technicians using the latest factory calibration procedures, automated repair diagnostics and genuine parts. You will always have the utmost confidence in your measurements.

Agilent offers a wide range of additional expert test and measurement services for your equipment, including initial start-up assistance onsite education and training, as well as design, system integration, and project management.

For more information on repair and calibration services, go to:

www.agilent.com/find/removealldoubt

Agilent Direct

www.agilent.com/find/agilentdirect

Quickly choose and use your test equipment solutions with confidence.

For more information on Agilent Technologies' products, applications or services, please contact your local Agilent office. The complete list is available at:

www.agilent.com/find/contactus

Phone or Fax

United States:

(tel) 800 829 4444

(fax) 800 829 4433

Europe:

(tel) 31 20 547 2111

Korea:

(tel) (080) 769 0800

(fax) (080) 769 0900

Other Asia Pacific Countries:

(tel) (65) 6375 8100

(fax) (65) 6755 0042

China:

(tel) 800 810 0189

(fax) 800 820 2816

Japan:

(tel) (81) 426 56 7832

(fax) (81) 426 56 7840

Latin America:

(tel) (305) 269 7500

Taiwan:

(tel) 0800 047 866

(fax) 0800 286 331

Email: tm_ap@agilent.com

Revised: 09/14/06

© Agilent Technologies, Inc. 2007, 2005

Printed in USA, July 25th 2007

5989-6062EN



Agilent Technologies