

# Agilent WireScope™ Pro Professional Network Test Option N2640A-010

Network Turn-Up and  
Gigabit Ethernet Troubleshooting

Technical Data, Software Release 3.0

## Network Turn-Up with the WireScope Pro

Agilent's WireScope Pro is a handheld Category 6A/ Class E<sub>A</sub> and Class F LAN cabling tester with a 1 GHz frequency range. The new Professional Network Test option enables LAN cabling installers and solution integrators to turn up Gigabit speed networks with one set of testers. It allows network administrators to troubleshoot networks across layers 1 to 4, and to locate network issues and bottlenecks at any line rate up to 1 Gbit/s.

Pre-defined performance tests and online manuals make the WireScope Pro very easy to use. Expert users can assist technicians in difficult cases through the optional remote control and web based access to test results.



## Features and Benefits

- **Automatic Network Discovery** simplifies the documentation of network resources and stations
- **Autotest application performance testing** allows for quick isolation of protocol, configuration and resource performance problems.
- **Supports 802.3ab and 802.3z compliant 10/100/1000BASE-T copper and 1000BASE-SX/-LX Gigabit fiber SFP interfaces.**
- **Optional remote control via web browser** allows troubleshooting, monitoring, and reporting from central office, eliminating costly dispatches
- **Full-screen, color LCD displays clear and complete results**
- **Touch-screen interface and online manuals** enhance ease of use.



Agilent Technologies

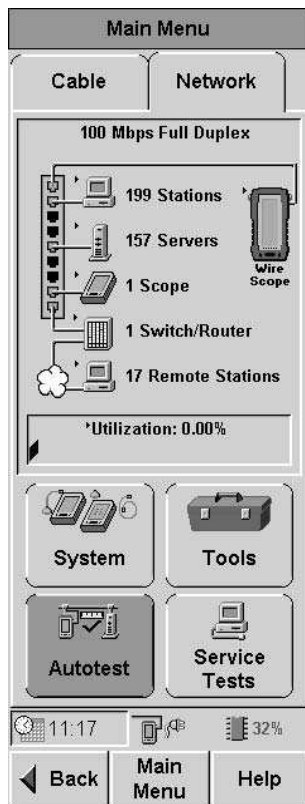
## Quickly Diagnose and Troubleshoot Network Problems

WireScope Pro Professional Network Test contains a complete arsenal for troubleshooting tools from Ping and Trace Route to and statistical analysis of the traffic breakdown.

With just a few clicks, the instrument allows to identify 10/100/1000 Mbit/s Ethernet utilization, broadcasts, pause frames, collisions, and errors, or pinpoint incorrectly assigned subnet masks, misconfigured servers, and duplicate IP addresses.

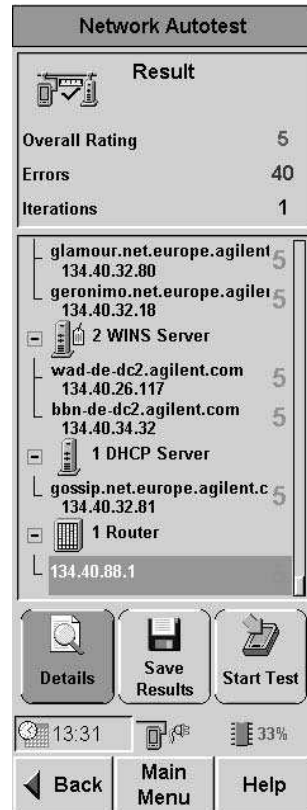
## Automatic Network Discovery

Once connected, the WireScope Pro automatically surveys the network and displays all devices in a switched network, providing instant visibility of IP and IPX devices on different subnets, along with their MAC addresses, network addresses, and names. Using the Network database populated by the network discovery function, the asset of network stations and services can be documented; rogue stations and unauthorized services can be identified.



## Automated and Simplified Network Service Testing and Pre-Qualification

WireScope Pro Autotest uses a unique technique to objectively measure and benchmark the performance of network application servers, and produces detailed reports on the performance metrics. This feature is useful for both troubleshooting and network turn-up.



## Connectivity to a Range of Protocols and Physical Media

Enabling Professional Network Test on the WireScope Pro activates the unit's built-in network test ports. The instrument is equipped with an RJ45 test port for 10/100/1000 Mbit/s over copper and an SFP (Small Form-factor Pluggable) interface for Gigabit Ethernet over fiber. A USB-powered media converter for 100BASE-FX and a range of SFP Gigabit Ethernet optical transceivers are optionally available.

## General Specifications

### User Interface

56 mm x 150 mm (2.2" x 5.9")  
touch-sensitive color LCD display

### Dimensions

Size: 232 mm x 126 mm x 86.7 mm  
(9.13" x 4.96" x 3.41")

Weight: approx. 1.36 kg  
(approx. 3.0 lbs.)

### Test Interfaces

- Electrical 10/100/1000BASE-T RJ45 interface, full and half duplex
- Supported SFP fiber interfaces: 1000BASE-SX and -LX

### Ports

- Universal Serial Bus (USB 1.1)
- Talkset Interface: 3.5 mm stereo jack
- Auxiliary 10/100BASE-T RJ45 interface for remote control and web access to the instrument; requires option N2640A-041 for activation.

### Power Supply

- Removable/Rechargeable Li-Ion batteries; provide 5 to 8 hours of continuous operation.
- AC Power adapter: 100~240 V AC, 12 V/3.3 A DC, plugs directly into the battery. Battery can be recharged separate from the instrument.

### Data Storage

- 64 MByte internal flash memory, 15.6 MByte user accessible; shared with cable test application.
- 256 MByte USB Flash Drive included. Allows storing Network Station Database, Network Settings, Test Results Database, and Test Suites.

### Software Upgrade

Semi-automated software upgrade using USB Flash Drive or special USB cable (included).

### Administration Functions

Remote control from any PC on the network; requires installation of a small applet.

Access to measurement results through web browser

Generation of printable reports through web browser

### Available User Interface Languages

English, French, Spanish, Italian, German, Simplified Chinese, Korean, Japanese-

### Environmental Conditions

Operating Temperature  
0°C to +40°C

Storage Temperature  
-10°C to +55°C

Relative Humidity  
10% to 80%

Operating Altitude  
up to 3000 meters

Pollution Degree: 2

## Professional Network Testing, Option N2640A-010

Supported Protocols	IP, IPX, NetBIOS
Addressing	DHCP
Autotest Supported RFCs Supported Services	RFC 2617 (HTTP Basic Authentication Scheme), RFC 959 (FTP) Email, Web, File, DNS, DHCP, WNS, Novell, Print, FTP, Primary DC, Secondary DC Servers, Switches and Routers
Traffic Statistics	Protocol statistics Top talker analysis Local utilization and error statistics Local error source
Network Discovery	automatic network discovery, active and passive
Tools	Ping, Trace route, Locate Switch Port, Error (problem) log Demo (training) mode Comprehensive built-in help function
SNMP Query Functions	Locate Switch Port SNMP public MIBs SNMP community setup
Report Generation Formats Tests Statistics	Comma Separated Value (csv, raw data) html (formatted report with tables) Autotest Network Station List, Network Statistics

## Ordering Information

N2640A-010  
Professional Network Test software  
license

N2640A-041  
Remote control and web access to the  
instrument via Auxiliary Port; enabled  
by individual software license  
(available from May 2008).

For upgrades of existing WireScope  
Pro LAN Cabling testers with the  
Professional Network Test option, an  
individual license code must be  
entered in the System menu of the  
WireScope Pro.

To acquire an upgrade license, please  
contact your Agilent Sales  
Representative, and have your  
instrument's serial number available.

## Recommended Accessories

N2620A-050  
Multimode SFP Transceiver,  
1000BASE-SX

N2620A-051  
Single Mode SFP Transceiver,  
1000BASE-LX

N2620A-053  
100BASE-FX Media Converter, USB  
powered

[www.agilent.com](http://www.agilent.com)

[www.agilent.com/find/wirescope](http://www.agilent.com/find/wirescope)

## Sales, Service and Support

### United States

1 800 829 4444  
1 800 829 4433 (FAX)

### Canada

1 877 894 4414  
1 888 900 8921 (FAX)

### Europe

(31) (0) 20 547 2111  
(31) (0) 20 547 2190 (FAX)

### Latin America

(55) 11 4197 3600  
(55) 11 4197 3800 (FAX)

### Australia

1 800 629 485  
1 800 142 134 (FAX)

### Hongkong

800 930 871  
(852) 2506 9233 (FAX)

### Singapore

1800-375 8100  
(65) 6755 0042 (FAX)

### Malaysia

1 800 888 848  
1 800 801 664 (FAX)

### China

800 810 0189  
800 820 2816 (FAX)

### Taiwan

0800 047 866  
0800 286 331 (FAX)

### India

1800 112 929  
1800 113 035 (FAX)

### Thailand

(66) (2) 268 1345  
(66) (2) 268 1346 (FAX)

### Japan

0120 421 345  
0120 421 678 (FAX)

This information is subject to change without notice.

Copyright © 2008 Agilent Technologies  
March 01, 2008

**5989-7957EN**



**Agilent Technologies**