



Agilent Modulation Domain and Time Interval Analyzers Pulse Analyzer System (PAS) Z2090B-170

Technical Overview

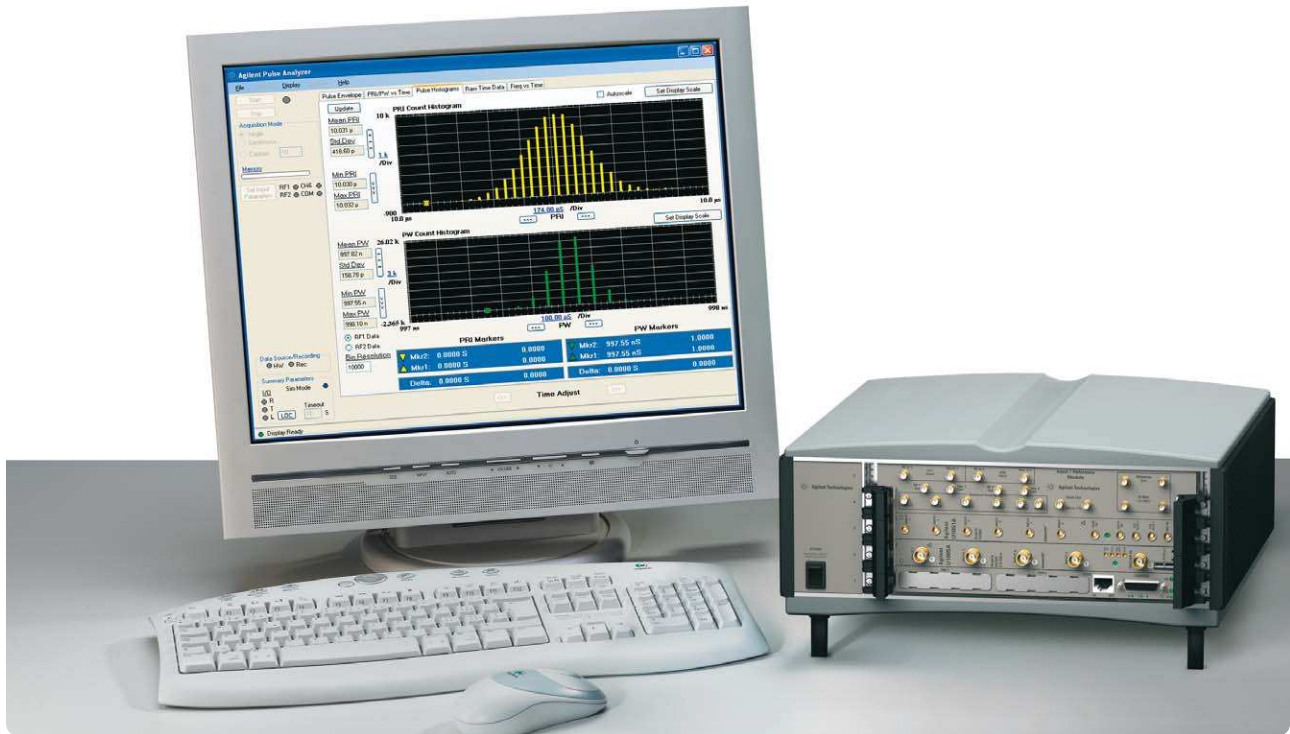


Figure 1. Agilent pulse analyzer system

Extreme speed ...

- 1 M events/sec capture rate
- 25 M events/sec data throughput

Extreme accuracy ...

- 50 picoseconds

Introduction

The Agilent PAS, pulse analyzer system provides precise, fast and efficient frequency and time interval analysis measurements for your RADAR Systems. Pulsed RF signal parameters are easily viewed and analyzed providing a comprehensive view of your RADAR system operation. See precise measurements, statistics, and histograms for RF pulse width and pulse repetition interval over time, clearly showing the timing accuracy and mode changes in your system.

www.agilent.com/find/pas



Agilent Technologies

Extreme measurement efficiency

The advantages are clear when performing time interval analysis based on zero dead time, time-to-data-converter (TDC) technology. Extreme efficiency in memory use and data transfer can be achieved by eliminating the dead time when measuring pulsed RF signals. By storing only the precise times for rising and falling edges of the RF pulse, the PAS makes optimal use of the 4M event memory in the Agilent TDC. The dual memory architecture of this TDC supports unrestricted time capture length at rates as high as 1M events per second. Extreme accuracy and time resolution of 50 ps is achieved independent of time record length. The PAS system provides a wide bandwidth, 2 channel RF input reference module (IRM) with built-in detectors and an ultra low noise/low jitter 10 MHz reference oscillator. This IRM combines all of the necessary signal routing, TDC clock and 10 MHz reference outputs. These features along with the flexible internal and external triggering functions allow you to synchronize the PAS and other measurement instruments with your RADAR system operation.

Time interval analysis using the Agilent pulse analyzer system

For applications focused on time interval analysis of RADAR signals, use the PAS system to make measurements such as:

- RF pulse width (PW) versus time
- RF pulse repetition interval (PRI or PRF) versus time
- PW and PRI histograms and statistics (min/max, mean, std deviation)
- Raw time interval data and frequency versus time data
- Flexible internal and external triggering functions
- Markers and zooming features

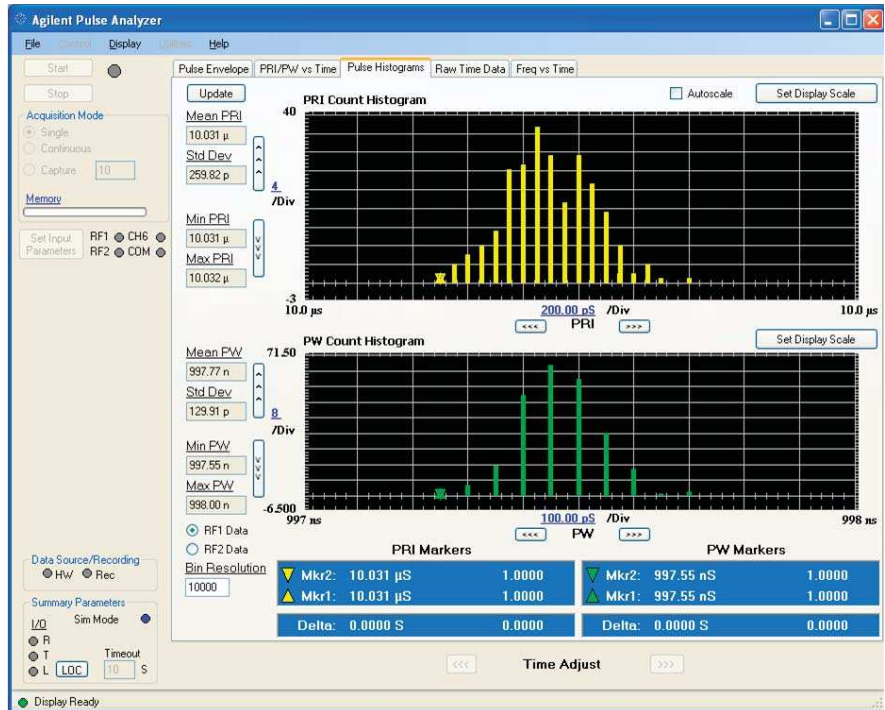


Figure 2. Histogram and statistics on PRI (yellow) and PW (green)

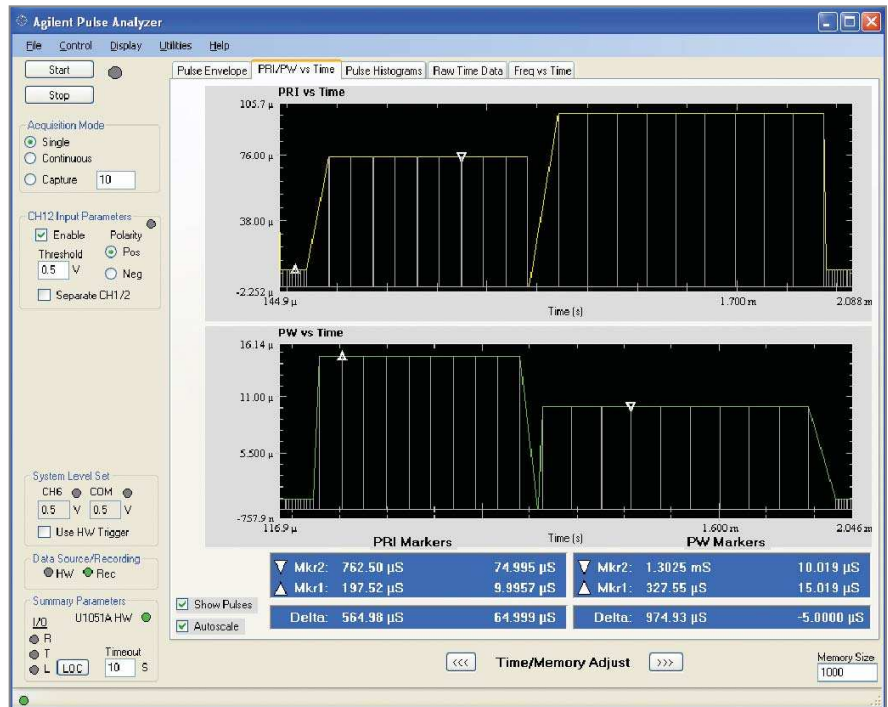


Figure 3. PAS system shows the RADAR mode changes with PRI vs time and PW vs time

Add the 4-channel digitizer for up to 8 GS/sec sampling with 10-bit resolution

The digitizer option includes a 4-channel digitizer with 2 of the channels available as direct inputs and 2 channels connected through the IRM in parallel to the TDC for simultaneous operation in both measurement modes. Capture and store digitized samples (to a file) for off-line analysis or for direct control via the 89601A VSA software. This enables measurements such as:

- Detected pulse envelope vs time
- Pulse power measurements
- Measure RF power (peak and average) of an input pulsed RF signal

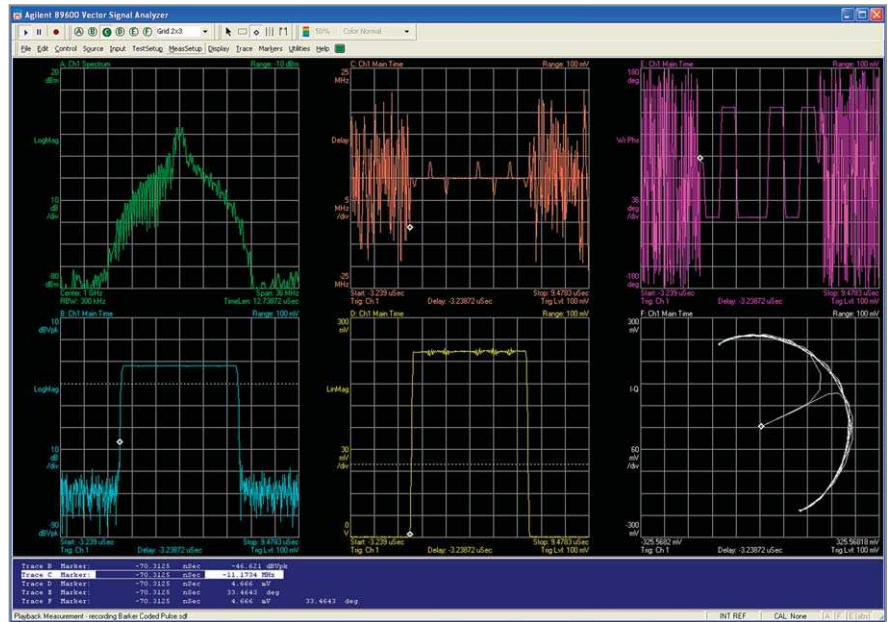


Figure 4. Barker coded pulsed RF showing frequency, delay, phase, time (log), time (linear), and I/Q

Add VSA software for extensive demodulation and analysis capability

With the Agilent 89601A VSA software, the PAS has extensive signal demodulation and analysis capability for a wide variety of RADAR signal and modulation types. This unique combination of extreme efficiency, accuracy, speed, and signal analysis capability make the Agilent PAS ideal for your modern RADAR system testing needs. Make additional measurements such as:

- Pulse carrier frequency measurements
- Pulse amplitude and power vs time (peak, average, overshoot)
- Modulation on pulse measurements (FM chirp, barker, Doppler, etc.)

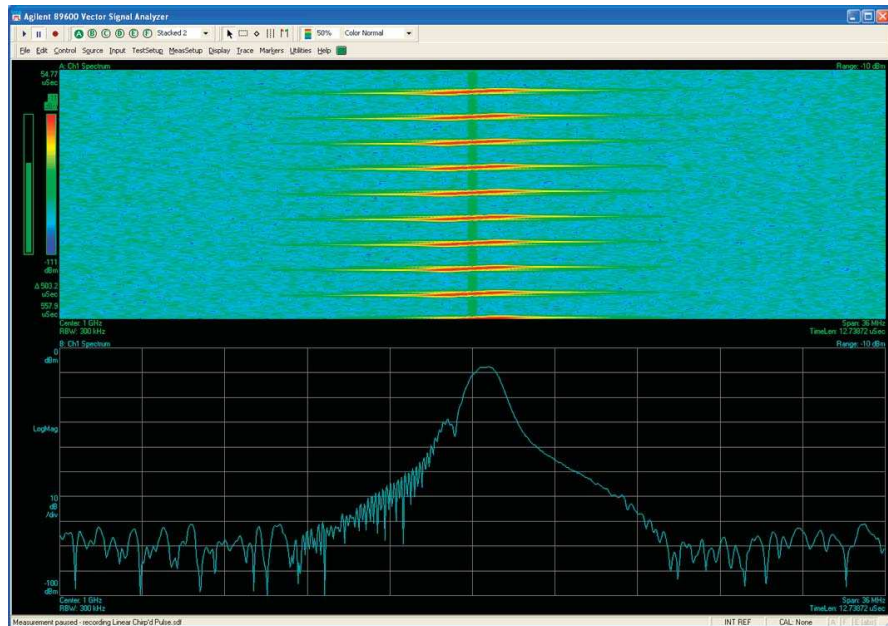


Figure 5. Pulsed RF linear chirp with spectrogram and frequency spectrum

Agilent PAS system characteristics compared to legacy HP systems

System characteristics	Agilent PAS system	HP 5371A / 5372A	HP 53310A
Channels	2 channel TDC; optional 4 channel digitizer	2 channel; optional 3rd channel	2 channel; optional 3rd channel
Frequency range	18 GHz (TDC via IRM detector) 2 GHz on digitizer	500 MHz/2 GHz; 3rd channel optional; external mixer/detector and LO source for 2 to 18 GHz	200 MHz/2.5 GHz 3rd channel optional; external mixer/detector and LO source for 2 to 18 GHz
Bandwidth	80 MHz (TDC) 2 GHz (digitizer)	500 MHz/2 GHz optional	200 MHz/2.5 GHz optional
Time interval and resolution	Unrestricted time capture with 50 ps resolution	Up to 8 seconds with 150 ps resolution	Up to 1 second with 200 ps resolution
Sustainable system capture rate	1 M events/second	N/A; accumulate statistics and histogram data only	N/A; accumulate statistics and histogram data only
Data transfer rate	25M events/second over PCI bus	25k measurements/second over GPIB	25k measurements/second over GPIB
System controller	Embedded compact PCI controller	External via GPIB	External via GPIB
Measurement memory	4M events (TDC) 1 Gsample (digitizer)	8k measurements	8k measurements; 32k optional
Minimum PW	250 ps	1 ns	1 ns
Minimum PRI	15 ns	75 ns	75 ns
Measurement functions	PW, PRI, PRF vs time, statistics, and histograms; Raw frequency and time interval data; Extensive vector modulation analysis with VSA option	PW, PRI, PRF vs time, statistics, histograms, duty cycle; Jitter and Allan variance Raw frequency and time interval data (very limited capture time) Basic modulation analysis	PW, PRI, PRF vs time, statistics, histograms, duty cycle jitter and Allan variance Raw frequency and time interval data (very limited capture time) Basic modulation analysis
Triggering functions	Internal and external	Internal and external; some advanced arming functions to optimize use of limited time capture	Internal and external; some advanced arming functions to optimize use of limited time capture

Standard pulse analyzer system (PAS)

Z2090B-170

- Multi-stop time-to-digital converter with multi-start acquisition mode
- 50 pico second timing resolution
- Large internal memory buffer, with up to 4 million events
- External 10 MHz reference input
- Fast DMA readout mode for increased data throughput
- Data streaming mode allows continuous acquisition and readout
- Low power consumption (< 24 W)
- Time to digital converter card
- PAS application software
- Embedded controller card
- Keyboard, 17-inch LCD, mouse
- Modular 5-slot PXI/Compact PCI mainframe



Custom configurations available to meet your specific application needs.

Add 4 channel, 10-bit digitizer card

Z2090B-171

- Up to 8 GS/s sampling rate with 10-bit ADC resolution
- 2 GHz bandwidth, 50 Ω , DC or AC coupled, with internal DC calibration
- 1 GSample acquisition memory
- High-resolution trigger time interpolator (TTI) for accurate timing measurements
- Sustained data transfer rates up to 400 MB/s
- Compatible with 89601A vector signal analysis software

Add VSA software

Z2090B-172

- Extensive signal demodulation analysis
- Additional RADAR signal analysis capability

Remove all doubt

Our repair and calibration services will get your equipment back to you, performing like new, when promised. You will get full value out of your Agilent equipment throughout its lifetime. Your equipment will be serviced by Agilent-trained technicians using the latest factory calibration procedures, automated repair diagnostics and genuine parts. You will always have the utmost confidence in your measurements.

Agilent offers a wide range of additional expert test and measurement services for your equipment, including initial start-up assistance onsite education and training, as well as design, system integration, and project management.

For more information on repair and calibration services, go to:

www.agilent.com/find/removealldoubt



Agilent Email Updates

www.agilent.com/find/emailupdates

Get the latest information on the products and applications you select.



Agilent Direct

www.agilent.com/find/agilentdirect

Quickly choose and use your test equipment solutions with confidence.



www.agilent.com/find/open

Agilent Open simplifies the process of connecting and programming test systems to help engineers design, validate and manufacture electronic products. Agilent offers open connectivity for a broad range of system-ready instruments, open industry software, PC-standard I/O and global support, which are combined to more easily integrate test system development.



www.lxistandard.org

LXI is the LAN-based successor to GPIB, providing faster, more efficient connectivity. Agilent is a founding member of the LXI consortium.

www.agilent.com/find/pas

For more information on Agilent Technologies' products, applications or services, please contact your local Agilent office. The complete list is available at:

www.agilent.com/find/contactus

Americas

Canada	(877) 894-4414
Latin America	305 269 7500
United States	(800) 829-4444

Asia Pacific

Australia	1 800 629 485
China	800 810 0189
Hong Kong	800 938 693
India	1 800 112 929
Japan	0120 (421) 345
Korea	080 769 0800
Malaysia	1 800 888 848
Singapore	1 800 375 8100
Taiwan	0800 047 866
Thailand	1 800 226 008

Europe & Middle East

Austria	0820 87 44 11
Belgium	32 (0) 2 404 93 40
Denmark	45 70 13 15 15
Finland	358 (0) 10 855 2100
France	0825 010 700*
	*0.125 €/minute
Germany	01805 24 6333**
	**0.14€/minute
Ireland	1890 924 204
Israel	972-3-9288-504/544
Italy	39 02 92 60 8484
Netherlands	31 (0) 20 547 2111
Spain	34 (91) 631 3300
Sweden	0200-88 22 55
Switzerland	0800 80 53 53
United Kingdom	44 (0) 118 9276201

Other European Countries:

www.agilent.com/find/contactus

Revised: February 15, 2008

Product specifications and descriptions in this document subject to change without notice.

© Agilent Technologies, Inc. 2008
Printed in USA, April 3, 2008
5989-8349EN



Agilent Technologies