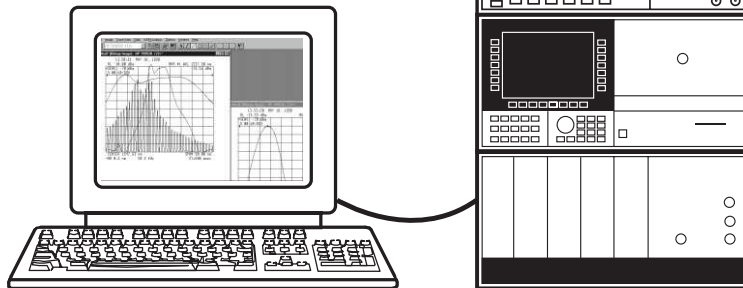


# Agilent N1031A BenchLink Lightwave Product Overview

## PC Software for Lightwave Instruments

Capture your measurement results and ...

- Save
- Print
- Copy & paste
- Analyze
- E-mail
- Import
- Annotate
- Document



*Easily transfer screen images and trace data from Agilent lightwave instruments over GPIB interfaces to a Windows-based PC*



**Agilent Technologies**  
Innovating the HP Way

Agilent N1031A BenchLink Lightwave allows you to easily transfer measurement results from a variety of lightwave instruments over an GPIB (IEEE 488) link into your PC or laptop for the purpose of archiving, printing and further analysis.

### Easy-to-Use

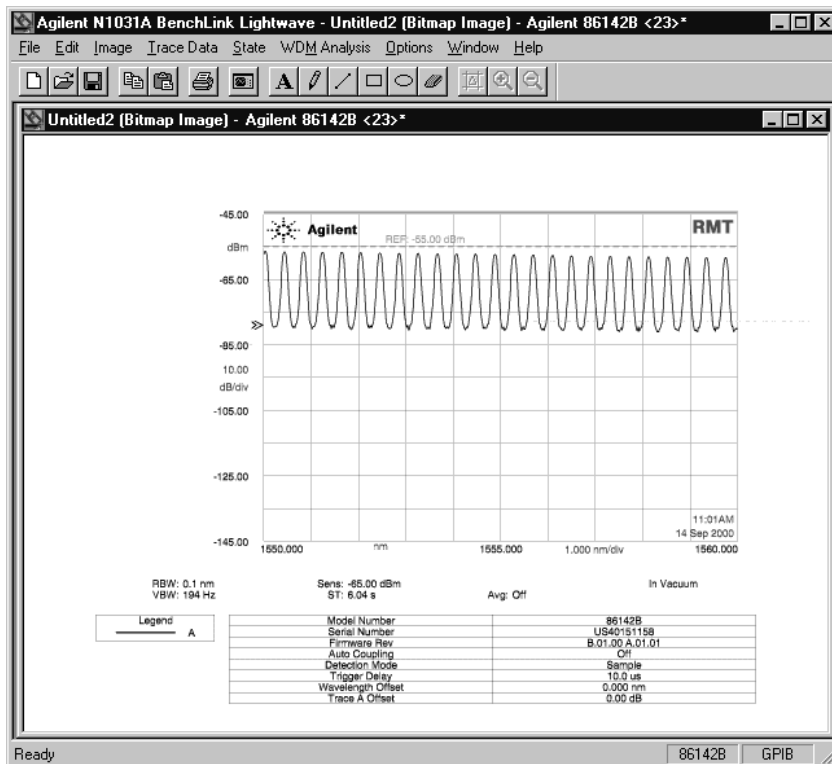
- Focus only on your job. Agilent has done all the programming for you.
- The simple-to-learn user interface is a member of the Agilent BenchLink family of software that takes full advantage of the familiar PC Windows interface.
- On-line context-sensitive help system provides detailed support.
- Instrument state lets users restore previous instrument setups for ease in capturing repetitive measurements.
- File transfer: Backup and restore the data that you have saved internally in the Agilent 8614XB family of OSAs.
- Convenient multi-color annotation tools add key information to screen images.
- Dense wavelength-division multiplexing (DWDM) spectrum analysis calculates wavelength, power and optical signal-to-noise ratio (SNR) of all channels.

### Supported Instruments and Features

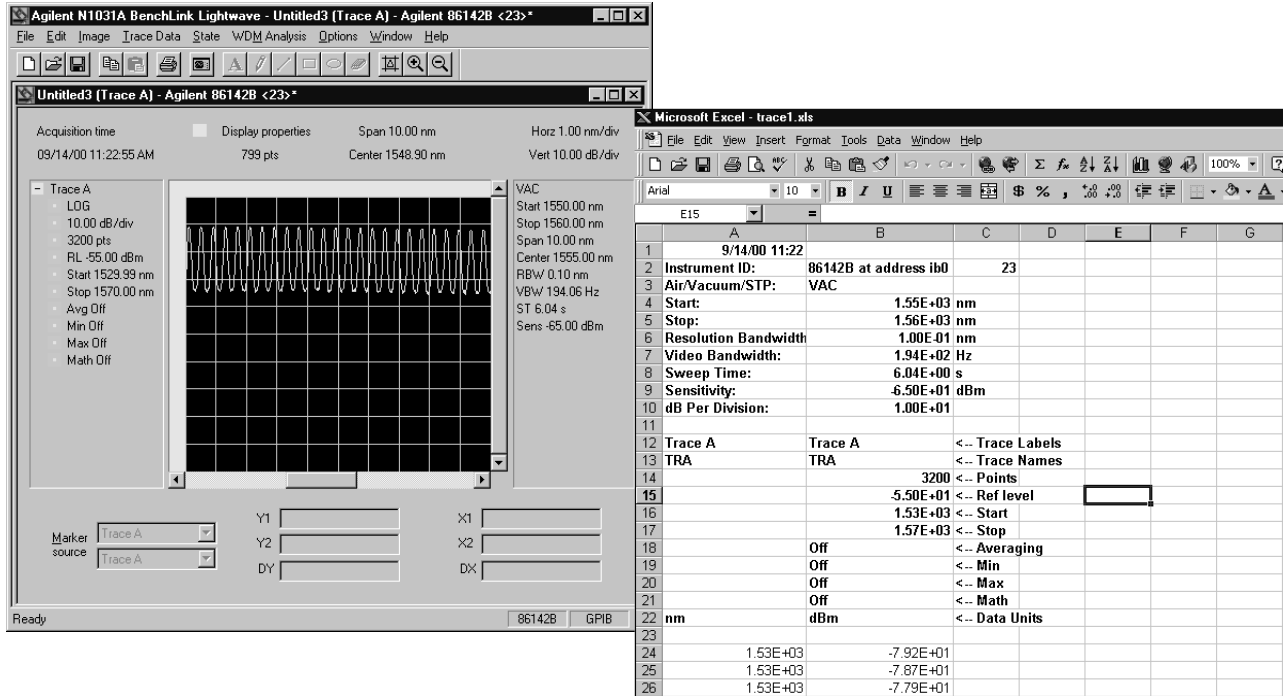
	Screen Images	Trace Data	Instr. States	DWDM Analysis	File Transfer
Agilent 8153A		•			
Agilent 8504B	•	•	•		
Agilent 8702B/D	•	•	•		
Agilent 8703A	•	•	•		
Agilent 70004A	•				
Agilent 71400C/1C	•	•	•		
Agilent 7145XA/B	•	•	•	•	
Agilent 83480A	•	•	•		
Agilent 86120A/B/C	•	•		•	
Agilent 8614XA/B	•	•	•	•	•

### Screen Images

- Transfer a color picture from the instrument's screen to your PC to view, save, annotate, e-mail or print.
- Capture the images and save them as PCX, TIF, GIF, BMP, or HP-GL<sup>1</sup> files for importing into your favorite applications.
- Or, use the Windows clipboard to copy-and-paste images from BenchLink directly to your application.



<sup>1</sup> HP-GL images can only be saved as an HP-GL (Hewlett-Packard Graphics Language) file format. Available for Agilent 70004A based instruments only.



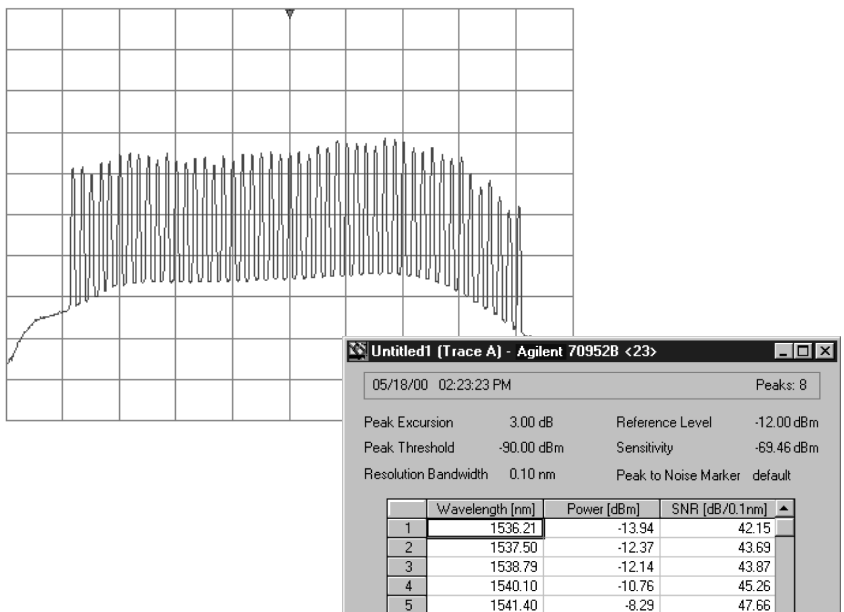
### Trace Data

Transfer the wavelength (time, frequency) amplitude pairs of trace data and display them graphically on your PC.

- Then, use the BenchLink Pan, Zoom, and X/Y marker features to analyze the traces.
- Copy trace data as wavelength (time) amplitude pairs in comma or tab separated formats to spread sheets or math applications for further analysis and manipulation.

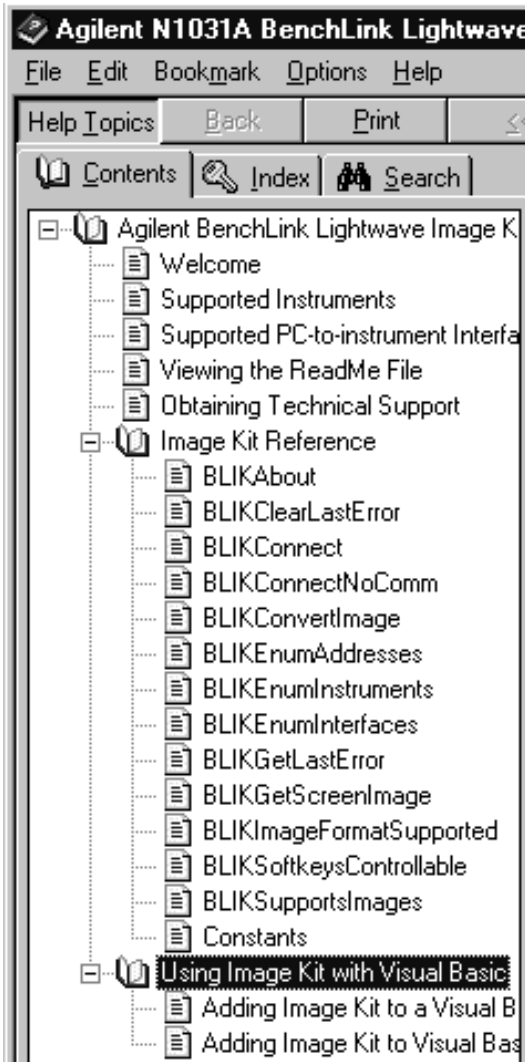
### DWDM Spectrum Analysis

The DWDM Analysis function characterizes wavelength, power and signal-to-noise ratio (SNR) of all channels within a few seconds. The resultant table can be stored in a text file (comma or tab separated) and easily imported into a spread-sheet, database, or math program.



## Convert Instrument Graphics Formats to PC Formats

Agilent N1031A BenchLink Lightwave internally uses a library to transfer images from supported instruments and then convert them into common PC graphics formats. This library can be accessed by your own program. The Image Kit is a standard MS Windows \*.OCX file and is therefore accessible from common programming platforms that support ActiveX® OLE controls. Detailed programming information and samples are included in its HELP system.



## Compatibility

Supported PC operating systems are Windows® 95, Windows® 98, and Windows NT® 4.0. Operation under MS-DOS®, Windows 3.X or NT 3.51 is not supported.

## Minimum system requirements

---

IBM® or compatible PC  
 Intel Pentium® (or compatible) 90 MHz processor  
 32 MB RAM memory  
 15 MB disk space  
 VGA graphics (SVGA or better recommended)  
 CD ROM (floppies can be built from the install program)  
 Microsoft compatible mouse

---

## Supported Interfaces

	95	98	NT 4
<b>Agilent Technologies</b>			
Agilent 823335B	•		
Agilent 82340A	•	•	•
Agilent 82341B			•
Agilent 82341C	•	•	•
Agilent 82341D	•	•	
Agilent 82350A	•	•	•
<b>National Instruments</b>			
National PCI-GPIB	•	•	•
National PCMCIA-GPIB	•	•	•
National PCMCIA-GPIB+	•	•	
National AT-GPIB/TNT(pnp)	•	•	•
National AT-GPIB/TNT+(pnp)	•	•	•
National AT-GPIB	•	•	•
National AT-GPIB/TNT	•	•	
National EISA-GPIB	•		
RS-232 <sup>2</sup>	•	•	•

<sup>2</sup> RS-232 communications options are not provided with most instruments supported by Agilent BenchLink Lightwave.

- Compatible with the entire Agilent BenchLink family of PC software.

## Ordering Information

Model	Description
Agilent N1031A	BenchLink Lightwave Software

### Additional Agilent BenchLink PC Software

Agilent 34810B	BenchLink Scope
Agilent 34811A	BenchLink Arb
Agilent 34812A	BenchLink Meter
Agilent 34820A	BenchLink Suite
Agilent E4444A	BenchLink Spectrum Analyzer

ActiveX, Windows, Windows NT, MS-DOS, MS Word and MS Excel, are U.S. registered trademarks of Microsoft Corporation.

IBM is a U.S. registered trademark of International Business Machines.

Pentium is a U.S. registered trademark of Intel Corporation.

For more information about Agilent Technologies test and measurement products, applications, services, and for a current sales office listing, visit our web site,

[www.agilent.com/comms/lightwave](http://www.agilent.com/comms/lightwave)

You can also contact one of the following centers and ask for a test and measurement sales representative.

#### United States:

Agilent Technologies  
Test and Measurement Call Center  
P.O. Box 4026  
Englewood, CO 80155-4026  
(tel) 1 800 452 4844

#### Canada:

Agilent Technologies Canada Inc.  
5150 Spectrum Way  
Mississauga, Ontario  
L4W 5G1  
(tel) 1 877 894 4414

#### Europe:

Agilent Technologies  
Test & Measurement  
European Marketing Organization  
P.O. Box 999  
1180 AZ Amstelveen  
The Netherlands  
(tel) (31 20) 547 2000

#### Japan:

Agilent Technologies Japan Ltd.  
Call Center  
9-1, Takakura-Cho, Hachioji-Shi,  
Tokyo 192-8510, Japan  
(tel) (81) 426 56 7832  
(fax) (81) 426 56 7840

#### Latin America:

Agilent Technologies  
Latin American Region Headquarters  
5200 Blue Lagoon Drive, Suite #950  
Miami, Florida 33126, U.S.A.  
(tel) (305) 267 4245  
(fax) (305) 267 4286

#### Australia/New Zealand:

Agilent Technologies Australia Pty Ltd  
347 Burwood Highway  
Forest Hill, Victoria 3131, Australia  
(tel) 1-800 629 485 (Australia)  
(fax) (61 3) 9272 0749  
(tel) 0 800 738 378 (New Zealand)  
(fax) (64 4) 802 6881

#### Asia Pacific:

Agilent Technologies  
24/F, Cityplaza One, 1111 King's Road,  
Taikoo Shing, Hong Kong  
(tel) (852) 3197 7777  
(fax) (852) 2506 9284

Technical data subject to change  
Copyright © 1999, 2000  
Agilent Technologies  
Printed in U.S.A. 10/00  
5968-2743E



**Agilent Technologies**

Innovating the HP Way