



# CAN, LIN and FlexRay Protocol Triggering and Decode for Infiniium 90000 Series Oscilloscopes

Data sheet



**This application is available in the following license variations.**

- Order N8803A for a user-installed license
- Order option 008 for a factory-installed license with new 90000 Series oscilloscopes
- Order N5435A option 033 for a server-based license that works on both 9000 and 90000 Series oscilloscopes



**Agilent Technologies**

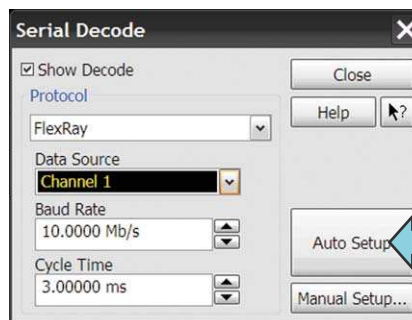
## CAN, LIN and FlexRay serial buses

CAN, LIN and FlexRay serial buses are the backbone for communication among many separate controllers, sensors, actuators, and ECUs located throughout automotive and industrial designs. These serial bus interfaces provide content-rich points for debug and test. However, since these protocols transfer bits serially, using a traditional oscilloscope has limitations. Manually converting captured 1's and 0's to protocol requires significant effort, can't be done in real-time, and includes potential for human error. As well, traditional scope triggers are not sufficient for specifying protocol-level conditions.

Extend your scope capability with Agilent's CAN, LIN and FlexRay triggering and decode application. This application makes it easy to debug and test designs that include these buses using your Infiniium 90000 Series oscilloscope.

- Set up your scope to show CAN, LIN or FlexRay protocol decode in less than 30 seconds.
- Get access to a rich set of integrated protocol-level triggers.
- Save time and eliminate errors by viewing packets at the protocol level.
- Use time-correlated views to quickly troubleshoot serial protocol problems back to their timing or signal integrity root cause.

Setup	Trigger	Measure	Analyze	Util
1	Channel 1...		Ctrl+1	
2	Channel 2...		Ctrl+2	
3	Channel 3...		Ctrl+3	
4	Channel 4...		Ctrl+4	
	Probes...		Alt+P	
	Serial Decode...		Alt+S	
	Serial Search...			



### Easy to find

Turn decode on/off in the "Setup" menu. View decode embedded on the waveform display or in the protocol viewer listing window. (See pages 4-5.)

### 30 second CAN, LIN or FlexRay Setup

Configure your oscilloscope to display protocol decode in under 30 seconds. Use "Auto Setup" to automatically configure sample rate, memory depth, threshold and trigger levels, and clock recovery for FlexRay

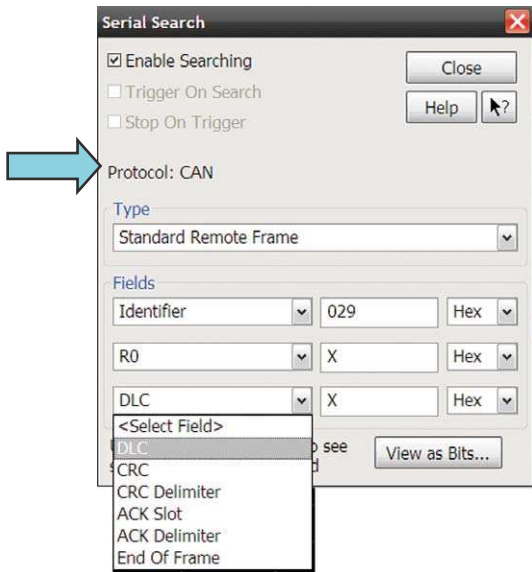
### Support for analog channels

Acquire serial buses using any combination of scope channels.

# CAN, LIN and FlexRay setup and protocol triggering

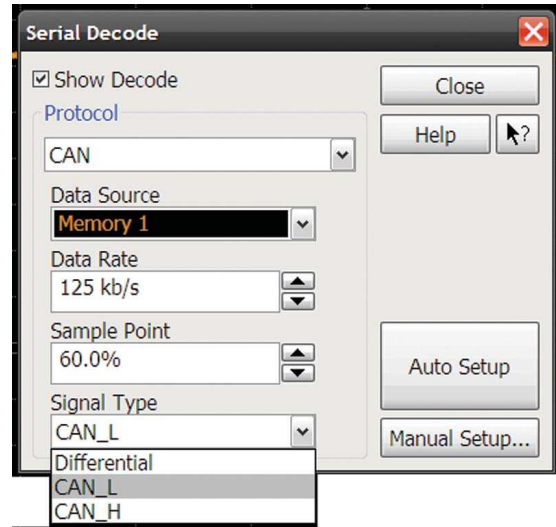
Get access to a rich set of integrated protocol-level triggers. The application includes a suite of configurable protocol-level trigger conditions specific to CAN, LIN, and FlexRay. When serial triggering is selected, the application uses software-based triggering.

With software-based protocol triggering, the oscilloscope takes signals acquired using either scope or digital channels and reconstructs protocol frames after each acquisition. It then inspects these protocol frames against specified protocol-level trigger conditions and triggers when the condition is met.



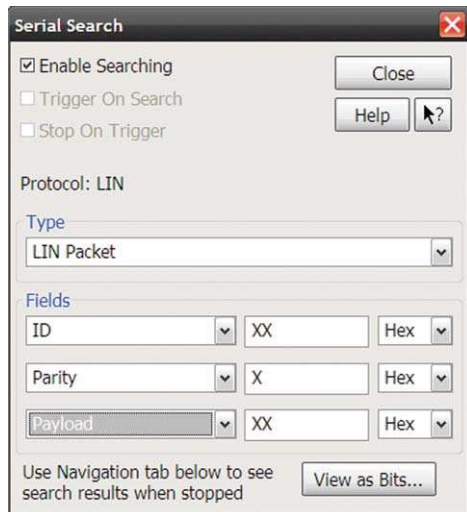
### CAN trigger

Quickly set up trigger for a unique frame or error condition.



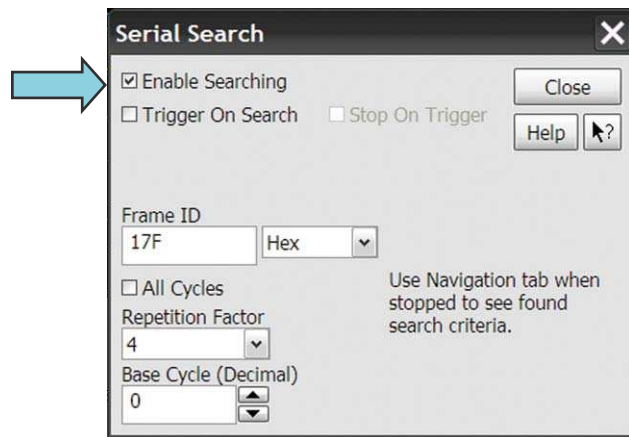
### Specify the CAN signal type.

Use single-ended probes or differential probes.



### LIN Trigger

For triggering on LIN packets, choose a combination of ID, parity, and payload values.

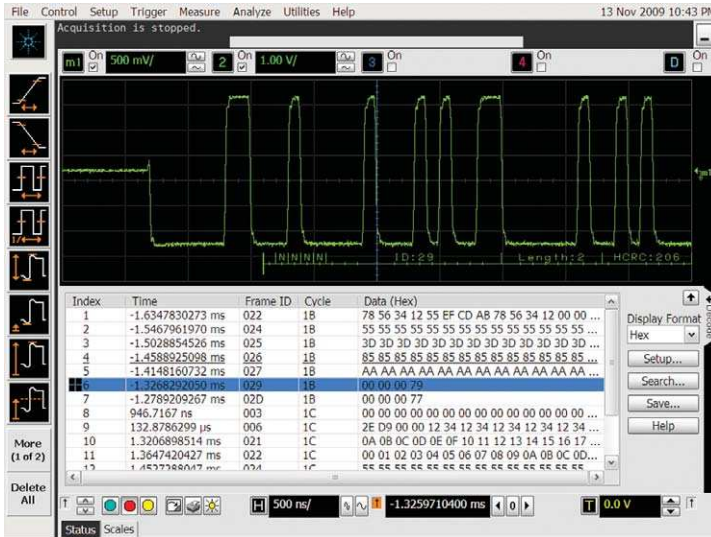


### FlexRay trigger

Quickly specify frame ID and repetition factor (optional) for software-based triggering and searching



# FlexRay protocol decode

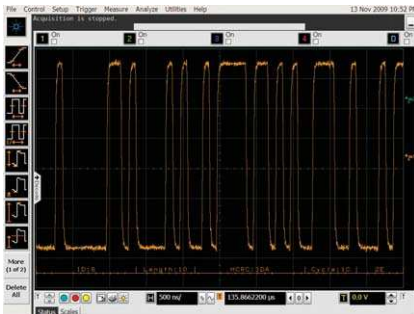


Quickly move between FlexRay physical and protocol layer information using the time-correlated tracing marker. Display protocol content using embedded decode in the waveform area. Or, see protocol events in a compact listing format. Minor tick marks indicate clock transitions. Major tick marks indicate segments of the serial packets.

The dialog box is titled "Clock Recovery" and contains the following settings:

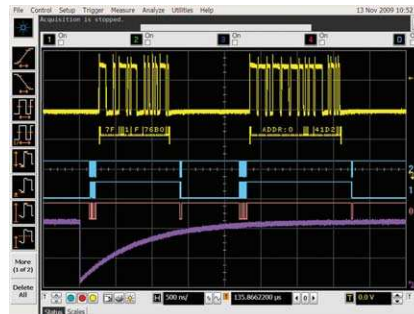
- Clock recovery applies to high speed serial data analysis, RJ DJ, and TIE jitter measurements.
- Clock Recovery Method: FlexRay Receiver
- Baud Rate: 10.0000 Mb/s
- Frame ID: XX (Hex)
- All Cycles
- Repetition Factor: 1
- Base Cycle (Decimal): 0

Solution includes FlexRay receiver clock recovery necessary for protocol decode and triggering.



## FlexRay Packet Decode

See FlexRay decode in waveform area display, or use the protocol viewer to see in a listing format



## Time correlation with other system activity

Protocol measurements are automatically time-correlated with measurements taken on other analog or digital (on MSO models) channels.

The menu shows the following information:

- Identifier: Remote
- Data (Decimal): 0
- 0 Navigating serial search stopped
- Serial search index: 3
- Number of searches found: 5
- Buttons: Home, Left, Down, Right, End, and a numeric keypad with '3' selected.
- Setup Search... button

## Post-acquisition searching

Search acquired protocol listings using a menu that is identical to the trigger menu. Quickly move to next occurrence of a specified event.

## CAN, LIN and FlexRay application specifications and characteristics

CAN	
CAN sources	Analog channels 1, 2, 3, or 4 Any waveform memories The application relies on probing and trigger/measurement thresholds to properly condition the signal for triggering and decode. Differential probing may be required.
Data rate	100 bp/s up to 1 Mb/s
Signal type	Differential, CAN_L, or CAN_H
Auto setup	Automatically configures scope settings for proper CAN decode and SW-based protocol triggering including memory depth, edge triggering, holdoff, sample rate, and measurement thresholds
Decoded fields	All including extended frame format
Triggering (software-based)	Start of frame Data frame (frame containing node data for transmission) user specified value for data byte 0 in hex, binary, or decimal Immediately followed by data byte specified in hex, binary, or decimal Remote frame (frame requesting the transmission of a specific identifier) User specified identifier in hex, binary, or decimal Data or remote frame Error frame (frame transmitted by any node detecting an error)

LIN	
LIN sources	Analog channels 1, 2, 3, or 4 Any waveform memories The application relies on probing and trigger/measurement thresholds to properly condition the signal for triggering and decode. Differential probing may be required.
Data rate	2400 bp/s to 626 kb/s
Auto setup	Automatically configures scope settings for proper FlexRay decode and SW-based protocol triggering including memory depth, edge triggering, holdoff, sample rate, and measurement thresholds, and clock recovery.
Decoded fields	All
Triggering (software-based)	LIN packets, including user-specified values for ID, parity, and payload wakeup, or errors including: parity, check, sync, frame length, header length or wakeup

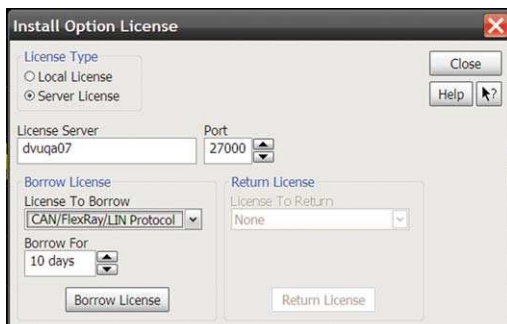
## FlexRay

FlexRay sources	Analog channels 1, 2, 3, or 4 Any waveform memories The application relies on probing and trigger/measurement thresholds to properly condition the signal for triggering and decode. Differential probing may be required.
Data rate	Up to 20 Mb/s
Cycle time	100 ns up to 100 ms
Auto setup	Automatically configures scope settings for proper FlexRay decode and SW-based protocol triggering including memory depth, edge triggering, holdoff, sample rate, and measurement thresholds, and clock recovery.
Decoded fields	All
Triggering (software-based)	Cycle TSS Any TSS User specified frame ID in hex, decimal, or binary. All cycles Repetition factor of 1, 2, 4, 8, 16, 32, or 64 Base cycle (decimal)

## Ordering Information

This application is compatible with all 90000 Series oscilloscope models.

Software applications	Factory-installed option for new scope purchases	User-installed stand-alone product number	Server-based license (N5435A option)
CAN, LIN, and FlexRay triggering and decode	008	N8803A	033



### Using multiple scopes?

Server-based licensing allows users to borrow an application for a specified period of time.

## Agilent Email Updates

[www.agilent.com/find/emailupdates](http://www.agilent.com/find/emailupdates)  
Get the latest information on the products and applications you select.

## Agilent Direct

[www.agilent.com/find/agilentdirect](http://www.agilent.com/find/agilentdirect)  
Quickly choose and use your test equipment solutions with confidence.

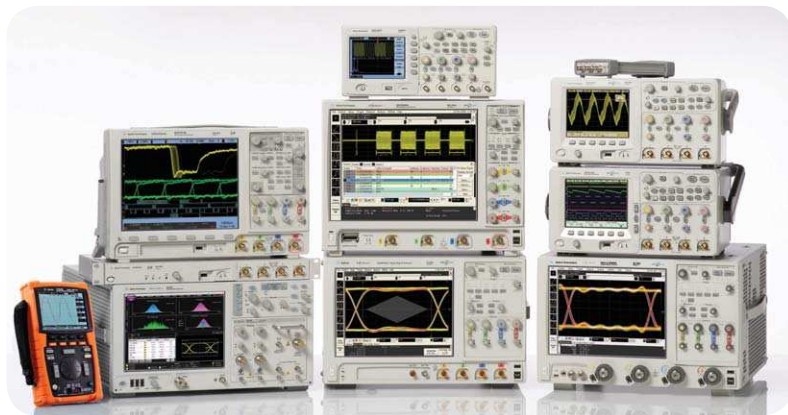
## Agilent Channel Partners

[www.agilent.com/find/channelpartners](http://www.agilent.com/find/channelpartners)  
Get the best of both worlds: Agilent's measurement expertise and product breadth, combined with channel partner convenience.

## LXI

[www.lxistandard.org](http://www.lxistandard.org)  
LXI is the LAN-based successor to GPIB, providing faster, more efficient connectivity. Agilent is a founding member of the LXI consortium.

Windows® is a U.S. registered trademark of Microsoft Corporation.



## Agilent Technologies Oscilloscopes

Multiple form factors from 20 MHz to >90 GHz | Industry leading specs | Powerful applications

## Remove all doubt

Our repair and calibration services will get your equipment back to you, performing like new, when promised. You will get full value out of your Agilent equipment throughout its lifetime. Your equipment will be serviced by Agilent-trained technicians using the latest factory calibration procedures, automated repair diagnostics and genuine parts. You will always have the utmost confidence in your measurements.

Agilent offers a wide range of additional expert test and measurement services for your equipment, including initial start-up assistance onsite education and training, as well as design, system integration, and project management.

For more information on repair and calibration services, go to

[www.agilent.com/find/removealldoubt](http://www.agilent.com/find/removealldoubt)

## [www.agilent.com](http://www.agilent.com)

[www.agilent.com/find/9000\\_CAN-LIN](http://www.agilent.com/find/9000_CAN-LIN)

For more information on Agilent Technologies' products, applications or services, please contact your local Agilent office. The complete list is available at:

## [www.agilent.com/find/contactus](http://www.agilent.com/find/contactus)

### Americas

Canada	(877) 894-4414
Latin America	305 269 7500
United States	(800) 829-4444

### Asia Pacific

Australia	1 800 629 485
China	800 810 0189
Hong Kong	800 938 693
India	1 800 112 929
Japan	0120 (421) 345
Korea	080 769 0800
Malaysia	1 800 888 848
Singapore	1 800 375 8100
Taiwan	0800 047 866
Thailand	1 800 226 008

### Europe & Middle East

Austria	43 (0) 1 360 277 1571
Belgium	32 (0) 2 404 93 40
Denmark	45 70 13 15 15
Finland	358 (0) 10 855 2100
France	0825 010 700*

\*0.125 €/minute

Germany	49 (0) 7031 464 6333
Ireland	1890 924 204
Israel	972-3-9288-504/544
Italy	39 02 92 60 8484
Netherlands	31 (0) 20 547 2111
Spain	34 (91) 631 3300
Sweden	0200-88 22 55
Switzerland	0800 80 53 53
United Kingdom	44 (0) 118 9276201

Other European Countries:

[www.agilent.com/find/contactus](http://www.agilent.com/find/contactus)

Product specifications and descriptions in this document subject to change without notice.

October 1, 2009

© Agilent Technologies, Inc. 2010  
Printed in USA, July 3, 2010  
5990-4099EN



## Agilent Technologies