

**Agilent**  
U2100A Series Digital IO, 32-Terminal Devices

Data Sheet



## Features

- **Up to 32 input terminals and 32 output terminals**
- **Supports input voltage ranging from 0 V to 24 V**
- **5 V to 24 V external supply for external load**
- **Opto-isolated IO channels with maximum transient voltage of 1500 V<sub>peak</sub>**
- **SCPI compatible**
- **Compatible with a wide range of Application Development Environments**
- **Fuse-protected output channels (shared by eight terminals)**

## Introduction

The Agilent U2100A Series devices are portable USB Digital IO (DIO) device that offers you cost-effective and affordable digital data acquisition solution.

The U2100A Series DIO devices are suitable for highly demanding industrial applications such as driving relays, actuators, and valves. It also acts as an interface to industrial sensors; limit applications include industrial control and automation, isolated data communication, logic level interface, and laboratory automation. In addition, the DIO device provides isolation to allow robust industrial automation applications.

There are three U2100A Series DIO models:

- **U2121A** – 16-Terminal Digital Input and 16-Terminal Digital Output
- **U2122A** – 32-Terminal Digital Input
- **U2123A** – 32-Terminal Digital Output

### Flexibility to Meet Industrial Demands with Various Features

- Quick and easy USB setup
- Opto-isolation for more reliable and improved signal quality
- High isolated transient voltage protection of the digital IO lines is able to protect your system from being damaged
- Programmable power-up state ensures glitch-free operations when connected to industrial automation instruments
- Watchdog timer protects your instruments against any unexpected crisis with its fail-safe feature
- Digital-filtering function filters out unwanted glitches and pulses
- Edge detection detects change of input signal without continuously reading the input



### Glitch-free operations with programmable power-up states

The programmable power-up state is an important function because it allows you to preconfigure the state of all the output lines of the device to a desired state when powering up. This function is incorporated in the U2121A/U2123A DIO. It ensures glitch-free operations for use with automation instruments such as motors, valves, and relays. These user-configurable power-up states help ensure that the device powers up in a known state. They can be programmed using Agilent DIO Diagnostics software or specific SCPI commands.

### Fail-safe feature with watchdog timer

The watchdog timer is incorporated into U2121A/U2123A DIO as a fail-safe feature. It is useful whenever the device is connected to industrial actuators such as motors, valves, and relays. It is a robust timer that allows you to set critical output lines to a known state in the event of crisis such as software failure, driver crash, or loss of any USB communication link. This is an important function because it protects you against any unexpected crisis.

## Software initialization with edge detection

You can monitor the change of states on all the input lines of U2121A/U2122A DIO through this edge-detection capability. With edge detection, you can also set the configuration of the individual interrupt enable register and the desired positive and/or negative edge-detection register masks before any of the input lines perform edge detection on the input signal. The maximum rate of edge detection is determined by the software response time that varies from system to system.

## Filter undesired glitches and Noises with digital filtering

This versatile digital-filtering functionality is another important feature for ensuring correct and precise readings. It is incorporated in the U2121A/U2122A DIO. This function is important for applications in noisy industrial environments because it helps you filter out undesired glitches or unwanted pulses from entering the input lines to prevent false and inaccurate readings. The digital filtering can be configured to filter out pulses that are shorter than the preprogrammed timing interval. All the input lines have this digital-filtering feature and can be enabled individually.

## Affordable, portable, and reliable

Highly portable at only 154.60 mm high, 120.00 mm wide, and 32.60 mm deep, it is ideal for both industrial and scientific environments. The U2100A Series DIO can operate within its rated specifications from 0 °C up to 55 °C and at altitudes up to 3000 m.

The robust design of the U2100A Series DIO guarantees reliable operation extending across industrial and education environments. It has also been tested in accordance to major safety and regulatory standards.

## Quick and easy connectivity

The U2100A Series DIO comes with simple and reliable USB (12 Mbps) connectivity. The USB interface is USBTMC-USB488 compatible, making system connections quick and easy. Besides that, the U2100A Series DIO interfaces with detachable terminal blocks for ease in field wiring, which gives you a simple and trouble-free setup. The detachable terminal blocks also offer you long-term ease of maintenance.

The U2100A Series DIO comes with Agilent IO Libraries Suite 14.2 and Agilent DIO Diagnostics software. The IO Libraries provide robust instrument control and work with the software development environment of your choice.

## SCPI, IVI-C, and IVI-COM compatible

You can use either the Agilent U2121 IVI Driver or SCPI commands (in any programming environment) to communicate with the U2100A Series DIO. This helps you save time and allows you to work with the software of your choice.

For more information on the Agilent U2121A Series Digital IO and other instrument drivers and software, visit <http://www.agilent.com/find/U2121A>

## System Requirements

---

### Agilent connectivity software included

Agilent IO Libraries Suite 14.2 or higher

---

#### Minimum system requirements

- |                          |  |
|--------------------------|--|
| • PC hardware            | 1.6 GHz Pentium IV or higher, 512 MB RAM or higher, 1 GB hard disk space, CD-ROM drive                                 |
| • Operating system       | Windows® XP Professional or Home Edition, Service Pack 1 or later, Windows® 2000 Professional, Service Pack 4 or later |
| • Connectivity interface | USB 2.0 Full Speed   |
- 

#### Software driver support for programming languages

- Software driver: IVI-COM
  - Compatible with programming environments: Agilent VEE, Microsoft Visual Studio® .NET™, C/C++, Microsoft Visual Basic® 6, LabVIEW, and LabWindows/CVI
-

## Product Specifications

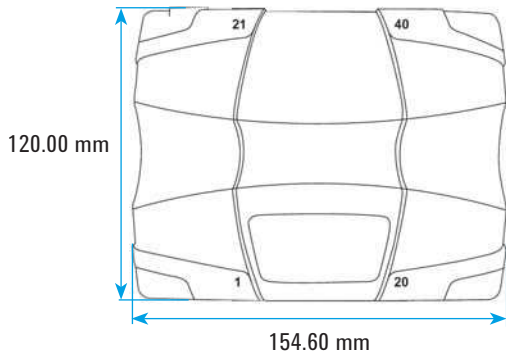
	Agilent U2121A	Agilent U2122A	Agilent U2123A
Digital IO lines	16 input, 16 output	32 input	32 output
<b>INPUT CHARACTERISTICS</b>			
Input voltage	0 V to 24 V	0 V to 24 V	
Input logic low voltage	< 1.3 V	< 1.3 V	
Input logic low current source	3 mA Max	3 mA Max	
Input logic high voltage	> 3.5 V	> 3.5 V	
Maximum rating Input voltage	26 V Max	26 V Max	
Input propagation delay	100 $\mu$ s (Opto-isolator)	100 $\mu$ s (Opto-isolator)	
Maximum Transient Voltage <sup>1</sup>	1500 V <sub>peak</sub>	1500 V <sub>peak</sub>	
<b>OUTPUT CHARACTERISTICS</b>			
Output load voltage	24 V max		24 V max
Output low voltage	1.2 V max		1.2 V max
Max output sink current per terminal with only one terminal "on"	400 mA max		400 mA max
Max output sink current per terminal for all terminals "on" in a channel	100 mA per terminal		100 mA per terminal
Max output sink current per channel (8 terminals per channel)	800 mA (max 1600 mA for 2 channels)		800 mA (max 3200 mA for 4 channels)
Maximum rating Max voltage Fuse protected	26 V max 1.5 A per channel (nominal)		26 V max 1.5 A per channel (nominal)
Output propagation delay	100 $\mu$ s (Opto-isolator)		100 $\mu$ s (Opto-isolator)
Maximum Transient Voltage <sup>2</sup>	1500 V <sub>peak</sub>		1500 V <sub>peak</sub>
<b>OTHER FEATURES</b>			
Device type	Software timed		
Additional features	<ul style="list-style-type: none"> <li>• Programmable power-up states</li> <li>• Watchdog timer</li> <li>• Edge detection</li> <li>• Digital filter</li> </ul>	<ul style="list-style-type: none"> <li>• Edge detection</li> <li>• Digital filter</li> </ul>	<ul style="list-style-type: none"> <li>• Programmable power-up states</li> <li>• Watchdog timer</li> </ul>
<b>USB POWER REQUIREMENTS</b>			
USB	USB 2.0 Full Speed		
USB voltage	5 V (4.75 to 5.25 V)		
USB current consumption	100 mA min, 500 mA max, 120 mA nominal	100 mA min, 500 mA max, 120 mA nominal	100 mA min, 500 mA max, 120 mA nominal
USB suspend	200 $\mu$ A min, 2.5 mA max, 250 $\mu$ A nominal	200 $\mu$ A min, 2.5 mA max, 250 $\mu$ A nominal	200 $\mu$ A min, 2.5 mA max, 250 $\mu$ A nominal

<sup>1</sup> Maximum transient voltage between DI<sub>in</sub> and V-

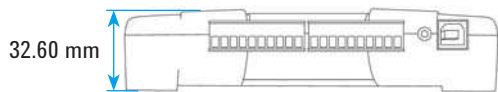
<sup>2</sup> Maximum transient voltage between DO and V-

## Product Outlook and Dimensions

### Top View



### Front View



## General Characteristics

### OPERATING ENVIRONMENT

- Full accuracy at 0 °C to 55 °C
- Full accuracy up to 90 % RH at 40 °C (Non-condensing)
- Altitude up to 3000 m

### STORAGE COMPLIANCE

-40 °C to 70 °C

### SAFETY COMPLIANCE

Certified with:

- IEC 61010-1:2001 / EN 61010-1:2001 (2nd Edition)
- USA: UL61010-1: 2004
- Canada: CSA C22.2 No.61010-1:2004

### ENVIRONMENTAL CONTROL

Pollution Degree 2

### EMC COMPLIANCE

IEC/EN 61326: 1998 / CISPR 11, Group 1, Class A

### SHOCK & VIBRATION

IEC / EN 60086-2

### PHYSICAL CHARACTERISTICS

- I/O connectors: USB series B receptacle, 10 position terminal block (4 pieces)
- Terminal block I/O wiring: AWG 18 to 26 conductor wires with insulation stripped from the end by 7 mm. Use suitable ferrule for multistranded wires (do not solder).
- Terminal block screw torque: 2 kg-cm

### DIMENSION (WxDxH)

154.60 mm x 120.00 mm x 32.60 mm

### WEIGHT

270 g / 0.595 lbs

### WARRANTY

Three years

## Standard Shipped Components



- Agilent U2100A Series Digital IO, 32-Terminal device
- USB Interface Cable
- Terminal Block
- DIN Rail Clamp
- Connector Pin Labeling
- Quick Start Guide
- Product Reference CD-ROM
- Agilent Automation-Ready CD (contains the Agilent IO Libraries Suite)

# Optional Accessory

## U2121A-101 RF Switch Driver Board

### Features

- **Controls and monitors up to five multiple RF switches at any one time**
- **Quick and easy setup with bundled RF switch driver software and cables**
- **Hassle-free connection setup to minimize complex DC connections, enabling more focus on RF signal routing**
- **Programmable U2100A Series DIO power-up configurations to allow storage of predefined RF switch states**
- **Watchdog timer provides fail-safe capability to preserve known states**
- **Supports fail-safe and latching-relay switches for maximum flexibility**

### Introduction

The Agilent U2121A-101 (also known as U2931A) RF switch driver with cable is an adapter board designed for use with the Agilent U2121A digital IO device. This solution (consist of U2121A device and U2931A board) is suitable for small, low-cost RF switching test systems using multiple signal sources. You can easily control various types of RF switches using the RF switch driver board in your application. It comprises five RF switch driver channels and one general IO terminal. Each channel is preprogrammed to drive three different types of Agilent RF switches, namely the Agilent 8762/63/64 coaxial switches, microwave 8765x SPDT switches, and N1810/11/12 coaxial switches<sup>1</sup>.

Setup and configuration of the RF switch driver board are effortless. In fact, a simple and intuitive graphical user interface (GUI) programmatic control is made readily available with your purchase to allow you to monitor up to five channels in the switch board. This is ideal for R&D, design validation, and education environments, which typically require multiple switches and multiple instruments in the test configuration.

<sup>1</sup> See Table 1 for details.

### High-performance, low-cost switching to meet your needs

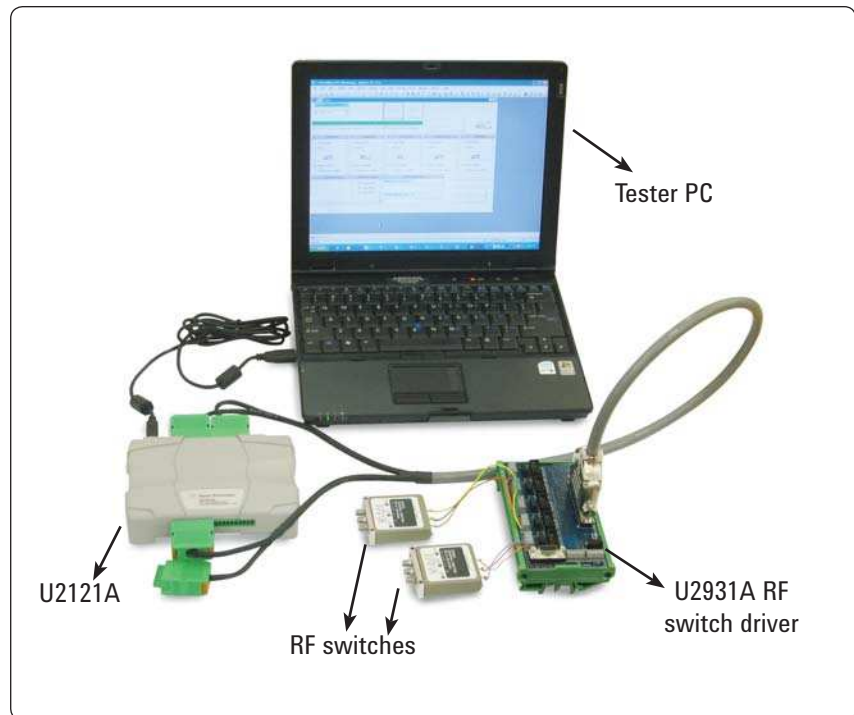


Figure 1. Example of a general RF test system

## Features You Need

### Supports multiple switches

The U2121A-101 board supports three types of Agilent RF switches and has the flexibility to drive up to five RF switch driver channels at any one time. You can choose to drive the same switches in all five channels or a combination of three different switches for the five channels. The board is designed for simplicity such that only one type of switch can be used in a channel at a time.

### Easy-to-use bundled software

The bundled RF switch driver software is simple and easy to use. The software comes with a GUI that allows you to configure and control your RF switch driver board without performing any programming. Control instructions and examples are available in multiple platforms for users who prefer to customize their software.

### Hassle-free hardware connection

The U2121A-101 board is connected to the U2121A DIO device using the provided interface cable. The cable is equipped with a 37-pin D-sub connector on one end and four 10-way terminal block connectors on the other. The switches are powered by the provided 24 VDC, 2.5 A power adapter. This straightforward connection is portable and simplifies the system hardware connection.

### Programmable power-up configuration

The bundled software allows you to save your current configurations as the default U2121A DIO device's power-up configuration. This allows your defined RF switch states to be restored. Upon powering up, the saved RF switches' directions and paths will be restored as its power-up settings.

### Unique watchdog timer

The watchdog timer provides fail-safe capability to restore saved configurations in the event of a software timeout, for instance, your PC freezes or reboots. It allows the DIO device to reset its RF switches' directions and paths back to your preset safe configuration to ensure that your connected devices remain in a safe configuration environment.

For more information on the Agilent U2121A-101 RF switch driver board and other instrument drivers and software, visit <http://www.agilent.com/find/U2931A>

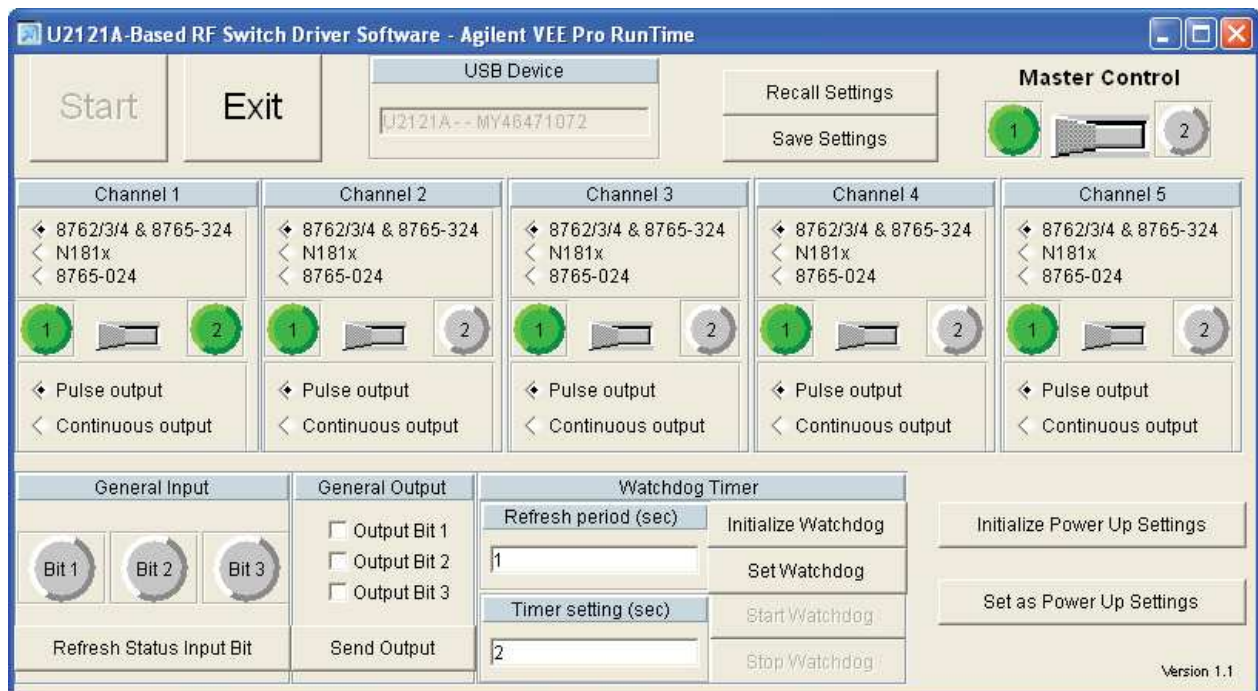
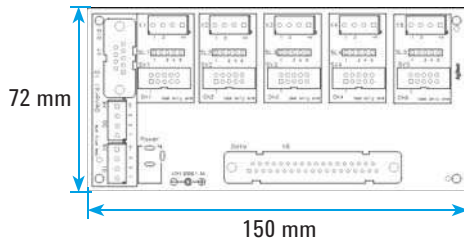


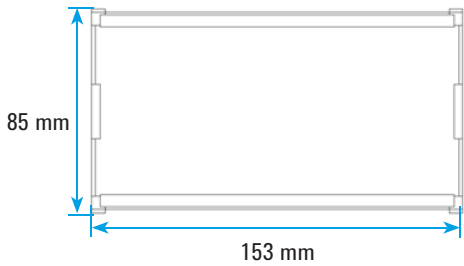
Figure 2. Easy-to-use RF switch driver application software GUI

## Product Outlook and Dimensions

### Top view (without casing)



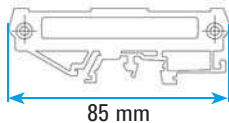
### Top view (with casing)



### Front view (with casing)



### Side view (with casing)



## Supported Switches

**Table 1.** Types of switches supported by U2121A-101 RF switch driver board

Switch/ Attenuator	Coil Voltage	Connection Type	Drive Options
N1810UL/TL N1811TL N1812TL	Option 124 24 VDC	Option 201 D-Sub 9-pin female	Option 402 Position Indicators
8762A/B/C/F 8763A/B/C 8764A/B/C	Option 024 24 VDC	Solder lugs	STD Direct coil for open drain
8765A/B/C/D	Option 324 24VDC	Solder terminals	STD Direct coil for open drain
8765A/B/C/D	Option 024 24 VDC	Ribbon cable terminated with single in-line	STD Direct coil for open drain

## U2121A-101 RF Switch Driver Application Software Requirements

### Agilent connectivity software included

Agilent IO Libraries Suite 15.0 or higher

### Minimum system requirements

- PC hardware
  - 1.6 GHz Pentium IV or higher, 512 MB RAM or higher, 1 GB hard disk space, CD-ROM driv
- Operating system
  - Windows XP Professional or Home Edition, Service Pack 1 or later, Windows 2000 Professional, Service Pack 4 or later

### Software required

- Agilent VEE
  - Runtime version 8.5<sup>[1]</sup> or higher
- Agilent U2121A IVI Driver
  - Version 1.0.9.0<sup>[1]</sup> or higher
- Microsoft® .NET Framework
  - Version 1.1 and 2.0<sup>[1]</sup>

<sup>[1]</sup> Bundled with Agilent RF Switch Driver Application Software installer.

## General Characteristics and Specifications

---

### POWER CONSUMPTION

- +24 VDC, 2.5 A
  - Isolated ELV supply source
- 

### OPERATING TEMPERATURE

0 °C to 40 °C

---

### STORAGE TEMPERATURE

-40 °C to 70 °C

---

### OPERATING HUMIDITY

Up to 85% at 40 °C (non-condensing)

---

### STORAGE HUMIDITY

5% to 90% RH (non-condensing)

---

### EMC COMPLIANCE

- IEC 61326:2002/EN61326:1997+A1:1998+A2:2001+A3:2003
  - Canada: ICES-001:2004
  - Australia/New Zealand: AS/NZS CISPR11:2004
- 

### SAFETY

IEC 61010-1:2001/EN 61010-1:2001 (2nd edition)

---

### DRIVING CURRENT PER CHANNEL

300 mA (max)

---

### TOTAL CURRENT

1500 mA (max)

---

### IO CHANNELS FOR RF SWITCH

5 channels

---

### GENERAL IO

3 digital inputs and 3 digital outputs

---

### BOARD DIMENSIONS (W x D)

150 mm x 72 mm

---

### CASING DIMENSIONS (W x D x H)

153 mm x 85 mm x 38 mm

---

### WEIGHT

- With casing: 146 g
  - Without casing: 86 g
- 

### WARRANTY

One year

---

## Ordering Information

To order the U2931A RF switch driver, please select the U2121A and U2121A-101 ordering options. This will include the U2121A digital IO device and U2121A-101 RF switch driver board and cable. You can also order the U2931A RF switch driver board as a standalone unit by choosing the U2931A-101 ordering option.

Ordering Option (with U2121A)	Ordering Option (as standalone)	Description
U2121A-101	U2931A-101	U2121A-101 RF switch driver board
	U2931A-102	U2121A-101 RF switch driver board cable

### Optional accessory

Ordering Options	Description
Y1157A	9-to-10 pin extension cable for N181x — supplies to build 4 cables

## Related Agilent Literature

### Application Note

*Creating a Small, Low-cost RF Switching System*

Pub. No. 5989-8069EN



**Agilent Email Updates**

[www.agilent.com/find/emailupdates](http://www.agilent.com/find/emailupdates)  
Get the latest information on the products and applications you select.

Microsoft, Windows, and Visual Studio are registered trademarks of Microsoft Corporation in the United States and/or other countries.

**Remove all doubt**

Our repair and calibration services will get your equipment back to you, performing like new, when promised. You will get full value out of your Agilent equipment throughout its lifetime. Your equipment will be serviced by Agilent-trained technicians using the latest factory calibration procedures, automated repair diagnostics and genuine parts. You will always have the utmost confidence in your measurements.

Agilent offers a wide range of additional expert test and measurement services for your equipment, including initial start-up assistance, onsite education and training, as well as design, system integration, and project management.

For more information on repair and calibration services, go to:

[www.agilent.com/find/removealldoubt](http://www.agilent.com/find/removealldoubt)

For more information on Agilent Technologies' products, applications or services, please contact your local Agilent office. The complete list is available at:

[www.agilent.com/find/contactus](http://www.agilent.com/find/contactus)

**Americas**

Canada	(877) 894 4414
Latin America	305 269 7500
United States	(800) 829 4444

**Asia Pacific**

Australia	1 800 629 485
China	800 810 0189
Hong Kong	800 938 693
India	1 800 112 929
Japan	0120 (421) 345
Korea	080 769 0800
Malaysia	1 800 888 848
Singapore	1 800 375 8100
Taiwan	0800 047 866
Thailand	1 800 226 008

**Europe & Middle East**

Austria	43 (0) 1 360 277 1571
Belgium	32 (0) 2 404 93 40
Denmark	45 70 13 15 15
Finland	358 (0) 10 855 2100
France	0825 010 700* <small>*0.125 €/minute</small>
Germany	49 (0) 7031 464 6333
Ireland	1890 924 204
Israel	972-3-9288-504/544
Italy	39 02 92 60 8484
Netherlands	31 (0) 20 547 2111
Spain	34 (91) 631 3300
Sweden	0200-88 22 55
Switzerland	0800 80 53 53
United Kingdom	44 (0) 118 9276201

Other European Countries:  
[www.agilent.com/find/contactus](http://www.agilent.com/find/contactus)

Revised: October 1, 2009

Product specifications and descriptions in this document subject to change without notice.

© Agilent Technologies, Inc. 2010  
Printed in USA, July 10, 2010  
5989-5725EN

