



# Agilent Technologies U7246A SD UHS-I Card Compliance Test Application for Infiniium 9000 and 90000 Series Oscilloscope

## Data sheet

### Features

The SD UHS-I card compliance test application offers several features to simplify the validation of your SD UHS-I card designs:

- Setup wizard for quick setup, configuration and test
- User-selected tests and configurations based on SD version 3.0 specifications and Test Spec for Card Ver3.00.
- Integrated DUT control capability to provide read-write burst signal separation on the same bus in real-time mode, allowing a precise waveform capture as defined in SD UHS-I card compliance condition.
- Test framework provides powerful characterization through multiple trials that show a full array of statistics for each measurement and returns the worst measurement value



The Agilent Technologies U7246A SD UHS-I card compliance test application provides a fast and easy way to test, debug and characterize your SD UHS-I card designs. The tests performed by the SD UHS-I compliance test software are based on the SD<sup>1</sup> version 3.0 specifications and Test Spec for Card Ver3.00. The test application offers a user-friendly setup wizard and a comprehensive report that includes margin analysis.

The next-generation SDXC memory card specification with increased bus interface of UHS-I speeds up to 104MB per second or higher, dramati-

cally improves consumers' digital lifestyles by increasing storage capacity to 2 TB. The compliance test offers bus timing analysis on the command and data lines with eye diagram measurements for all UHS-I speed modes including Default and High speed mode. The compliance test also covers current consumption tests for all UHS-I speed modes including Default and High speed mode. The U7246A SD UHS-I card compliance test application is compatible with Agilent Infiniium 9000 and 90000 Series oscilloscopes.

<sup>1</sup> The SD (Secure Digital) is a set of industry standards and promotes Secure Digital (SD) product acceptance in a variety of applications.

<sup>2</sup> Integrated DUT Control capability is provided by Tokyo Electron Devices's SD Host Emulator board.

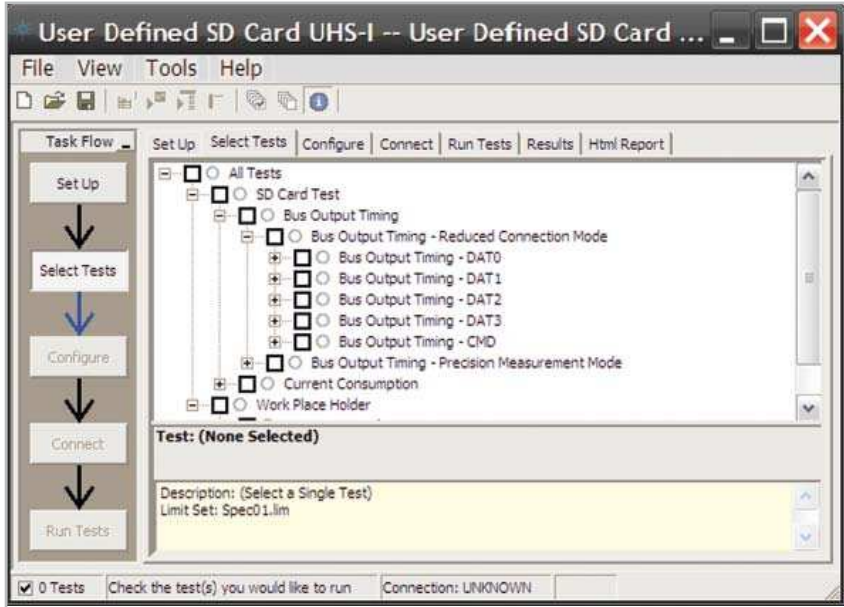


## Comprehensive test coverage

With the SD UHS-I card compliance test application, you can use the same oscilloscope you use for everyday debugging to perform automated testing and margin analysis based on the SD timing and current consumption specifications. The application automatically configures the oscilloscope for each test and provides informative results. It includes margin analysis indicating how close your device comes to passing or failing the test for each specification. Some of the difficulties in performing the compliance tests are connecting to the target device, configuring the oscilloscope, performing the tests and analyzing the measured results. The SD UHS-I card compliance test application does most of this work for you by using the automated test engine platform with the integrated DUT control capability<sup>2</sup>.

## Easy test definition

The test application enhances the usability of Agilent Infiniium oscilloscopes for testing SD UHS-I card devices. The Agilent automated test framework guides you quickly through the steps required to define the setup, perform the tests and view the test results. You can select a category of tests or specify individual tests. The user interface is designed to minimize unnecessary reconnections, which saves time and minimizes potential operator error. You can save the tests and configurations as project files and recall them later for quick testing and review of previous results. Clear menus let you perform tests with minimum mouse clicks.



**Figure 1. The Agilent automated test engine filters the test selection based on your test setup. You can easily select individual tests or groups of tests with a mouse-click.**

<sup>1</sup> The SD (Secure Digital) is a set of industry standards and promotes Secure Digital (SD) product acceptance in a variety of applications.

<sup>2</sup> Integrated DUT Control capability is provided by Tokyo Electron Devices's SD Host Emulator board.

## Configurability and guided connection

The SD UHS-I card compliance test application provides flexibility in your test setup. The SD UHS-I card compliance test application provides you with user-defined controls for critical test parameters such as sampling rate, number of acquisition points used for analysis and customizable violation settings. Once you have configured the tests, the connection page will display the connection diagram for the test you have selected. With the multiple test trial capability, you can extensively characterize the performance of your SD UHS-I card devices. You can run the selected tests until the stop condition is met. The application will then save the worst-case conditions and help you track down the anomalies in your signals.

In addition to providing you with measurement results, the U7246A SD UHS-I card compliance test application reports how close you are to the specified limit. You can specify the level at which warnings are to be issued. You are provided with a full array of statistics for each measurement, and you can save worst-case conditions to extensively test the performance of your device.

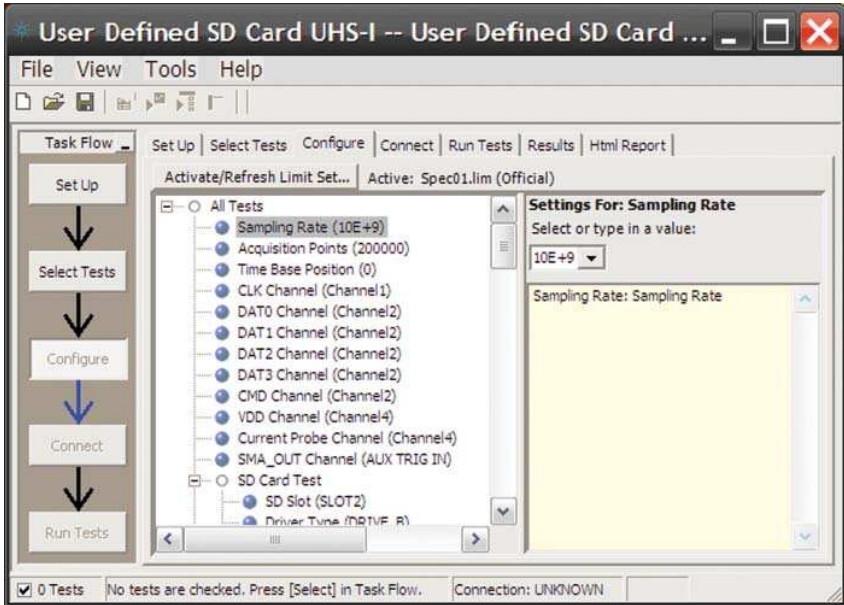


Figure 2. The software provides user-defined controls for test parameters such as sampling rate.

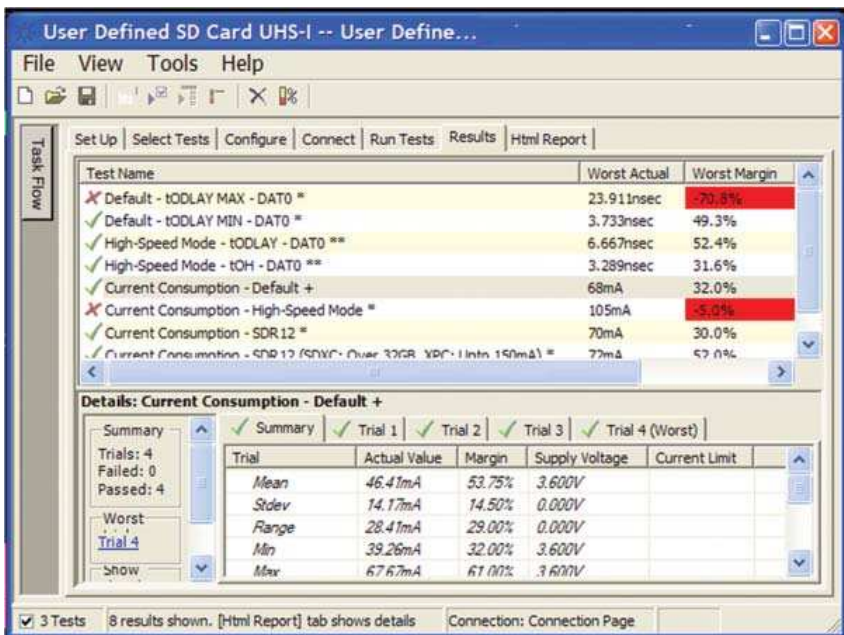


Figure 3. The SD UHS-I test application documents your test parameters, pass or fail status, test specification range, measured values and pass/fail margin.

1 The SD (Secure Digital) is a set of industry standards and promotes Secure Digital (SD) product acceptance in a variety of applications.

2 Integrated DUT Control capability is provided by Tokyo Electron Devices's SD Host Emulator board.

## Thorough performance reporting

The U7246A SD UHS-I card compliance test application generates thorough HTML reports that capture the performance, status and margins of your device. It also captures screen shots of critical measurements for your reference and documentation. This report is suitable for printing and sharing with your vendors, customers or colleagues.



### Application Test Report

Overall Results: 0 of 20 Tests Failed

Test Configuration Details	
Device Description	
User Comments:	
Test Session Details	
Infiniium SW Version	02.10.0008
Infiniium Model Number	MSO9254A
Infiniium Serial Number	MY49250145
Application SW Name	User Defined SD Card UHS-I
Application SW Version	0.02.0670
Pass Limits (official)	Spec01.lim
Last Test Date	6/8/2010 4:57:47 PM

### Summary of Results

Margin Thresholds	
Warning	< 2 %
Critical	< 0 %

Pass	# Failed	# Trials	Test Name	Actual Value	Margin	Spec Range
✓	0	1	Default - tODLAY MAX - DAT0	8.267nsec	41.0 %	VALUE <= 14.000nsec
✓	0	1	Default - tODLAY MIN - DAT0	4.267nsec	70.7 %	VALUE >= 2.500nsec

Figure 4. The test application generates a summary report where you can see your device's test results quickly and clearly. Details are available for each test including the test limits, test description and test results, including saved waveforms. In addition, the pass/fail margin is indicated to give you further insight.

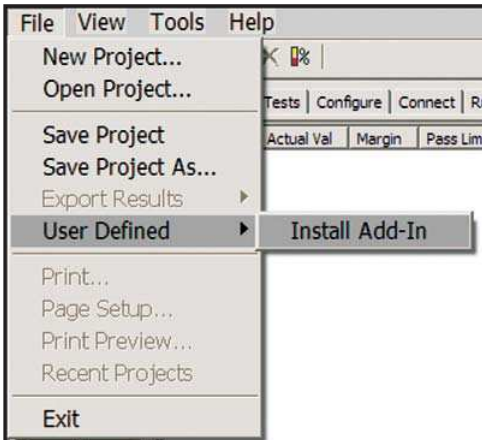
1 The SD (Secure Digital) is a set of industry standards and promotes Secure Digital (SD) product acceptance in a variety of applications.  
 2 Integrated DUT Control capability is provided by Tokyo Electron Devices's SD Host Emulator board.

## Extensibility

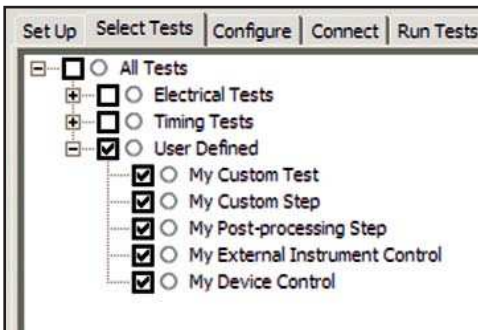
You may add additional custom tests or steps to your application using the N5467A User Defined Application (UDA) development tool ([www.agilent.com/find/uda](http://www.agilent.com/find/uda)). Use UDA to develop functional "Add-Ins" that you can plug into your application.

Add-ins may be designed as:

- Complete custom tests (with configuration variables and connection prompts)
- Any custom steps such as pre or post processing scripts, external instrument control and your own device control



**Figure 5. Importing a UDA Add-In into your test application.**



**Figure 6. UDA Add-In tests and utilities in your test application.**

## Automation

You can completely automate execution of your application's tests and Add-Ins from a separate PC using the included N5452A Remote Interface feature (download free toolkit from [www.agilent.com/find/scope-apps-sw](http://www.agilent.com/find/scope-apps-sw)). You can even create and execute automation scripts right inside the application using a convenient built-in client.

The commands required for each task may be created using a command wizard or from "remote hints" accessible throughout the user interface.

Using automation, you can accelerate complex testing scenarios and even automate manual tasks such as:

- Opening projects, executing tests and saving results
- Executing tests repeatedly while changing configurations
- Sending commands to external instruments
- Executing tests out of order

Combine the power of built-in automation and extensibility to transform your application into a complete test suite executive:

- Interact with your device controller to place it into desired states or test modes before test execution.
- Configure additional instruments used in your test suite such as a pattern generator and probe switch matrix.
- Export data generated by your tests and post-process it using your favorite environment, such as MATLAB, Python, LabVIEW, C, C++, Visual Basic etc.
- Sequence or repeat the tests and "Add-In" custom steps execution in any order for complete test coverage of the test plan.

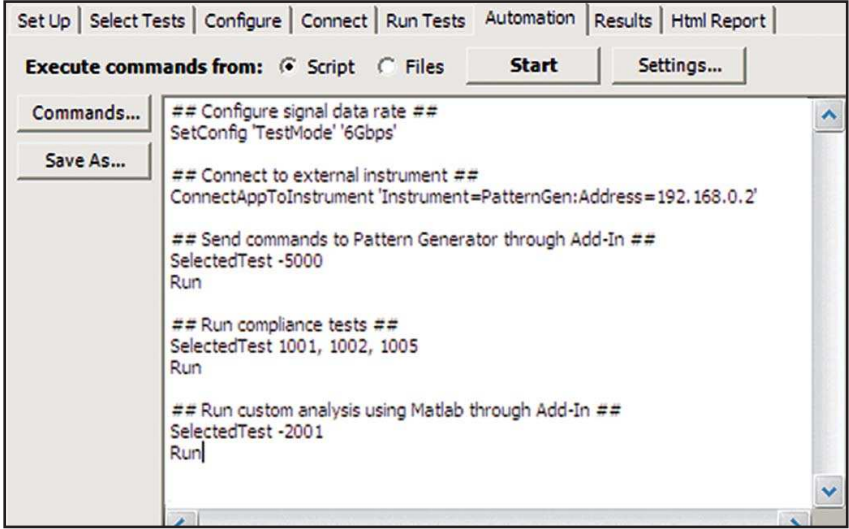


Figure 7. Remote Programming script in the Automation tab.

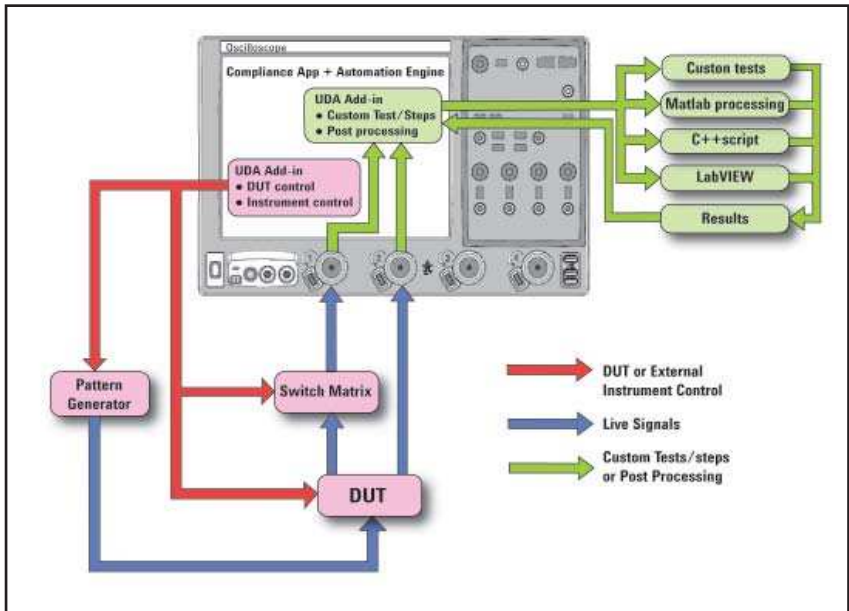


Figure 8. Combine the power of built-in automation and extensibility to transform your application into a complete test suite executive.

## Ordering information

To purchase the Agilent U7246A SD UHS-I card compliance test application for your new or existing Infiniium 9000/90000A/X, Series oscilloscope, order the following:

Model number	Description
9000/90000A/X,	Infiniium Series oscilloscopes. Bandwidth over 2.5 GHz is recommended for UHS-I tests.
U7246A	SD UHS-I Compliance Test Application
E2688A	High-speed serial data analysis and clock recovery software (Option 003 on new 9000 or 90000 Series oscilloscope)
115xA/113xA <sup>1</sup>	InfiniiMax I/II probe amplifier (quantity 2). Minimum 1.5 GHz bandwidth is recommended for SDR104 testing
E2678A	InfiniiMax socketed probe head (quantity 2)
N278xA	N278xA current probe with N2779A power supply and E2697A high impedance adapter
BIT-1080-0000-0	SD UHS-I Test Fixture Kit. See ordering information from <a href="http://www.bitifeye.com/cms/front_content.php?idcat=125">http://www.bitifeye.com/cms/front_content.php?idcat=125</a>

<sup>1</sup>Ensure that the probe amplifier meets the bandwidth requirement for your signal measurements.

The U7246A SD UHS-I Card Compliance Test Application performs the following tests regarding Transmitter of SD Card as per SD Card Compliance Test Specification 3.0.

Test Category	Speed Mode
Bus Output Timing	Default, High Speed, SDR12, SDR25, SDR50, SDR104 and DDR50
Current Consumption	Default, High Speed, SDR12, SDR25, SDR50, SDR104 and DDR50

Note: For Card Receiver Test, Tokyo Electron Devices provides software which is included in their SD Host Emulation board. Information about the emulation board is available at [www.bitifeye.com/cms/front\\_content.php?idcat=125](http://www.bitifeye.com/cms/front_content.php?idcat=125)

## Related literature

Related literature	Publication title	Publication number
<i>Agilent Infiniium DSO/DSA 90000A Series Oscilloscopes and InfiniiMax Series Probes</i>	Data sheet	5989-7819EN
<i>Agilent Technologies E2688A, N5384A High-Speed Serial for Infiniium Series Oscilloscopes</i>	Data sheet	5989-0108EN
<i>Agilent Oscilloscope Probe and Accessories</i>	Data sheet	5989-6162EN

<sup>1</sup> The SD (Secure Digital) is a set of industry standards and promotes Secure Digital (SD) product acceptance in a variety of applications.

<sup>2</sup> Integrated DUT Control capability is provided by Tokyo Electron Devices's SD Host Emulator board.



### Agilent Email Updates

[www.agilent.com/find/emailupdates](http://www.agilent.com/find/emailupdates)

Get the latest information on the products and applications you select.



[www.lxistandard.org](http://www.lxistandard.org)

LXI is the LAN-based successor to GPIB, providing faster, more efficient connectivity. Agilent is a founding member of the LXI consortium.

### Agilent Channel Partners

[www.agilent.com/find/channelpartners](http://www.agilent.com/find/channelpartners)

Get the best of both worlds: Agilent's measurement expertise and product breadth, combined with channel partner convenience.

Agilent  
Advantage  
Services



Agilent Advantage Services is committed to your success throughout your equipment's lifetime. We share measurement and service expertise to help you create the products that change our world. To keep you competitive, we continually invest in tools and processes that speed up calibration and repair, reduce your cost of ownership, and move us ahead of your development curve.

[www.agilent.com/find/advantageservices](http://www.agilent.com/find/advantageservices)



[www.agilent.com/quality](http://www.agilent.com/quality)

[www.agilent.com](http://www.agilent.com)  
[www.agilent.com/find/U7246A](http://www.agilent.com/find/U7246A)

For more information on Agilent Technologies' products, applications or services, please contact your local Agilent office. The complete list is available at:

[www.agilent.com/find/contactus](http://www.agilent.com/find/contactus)

#### Americas

Canada	(877) 894 4414
Brazil	(11) 4197 3500
Mexico	01800 5064 800
United States	(800) 829 4444

#### Asia Pacific

Australia	1 800 629 485
China	800 810 0189
Hong Kong	800 938 693
India	1 800 112 929
Japan	0120 (421) 345
Korea	080 769 0800
Malaysia	1 800 888 848
Singapore	1 800 375 8100
Taiwan	0800 047 866
Other AP Countries	(65) 375 8100

#### Europe & Middle East

Belgium	32 (0) 2 404 93 40
Denmark	45 70 13 15 15
Finland	358 (0) 10 855 2100
France	0825 010 700*
	*0.125 €/minute
Germany	49 (0) 7031 464 6333
Ireland	1890 924 204
Israel	972-3-9288-504/544
Italy	39 02 92 60 8484
Netherlands	31 (0) 20 547 2111
Spain	34 (91) 631 3300
Sweden	0200-88 22 55
United Kingdom	44 (0) 131 452 0200

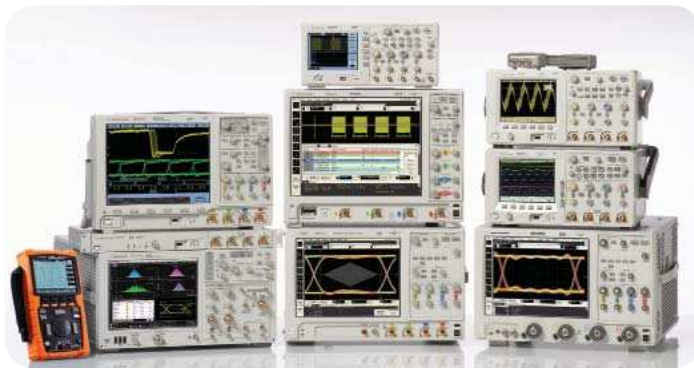
For other unlisted countries:

[www.agilent.com/find/contactus](http://www.agilent.com/find/contactus)

Revised: June 8, 2011

Product specifications and descriptions in this document subject to change without notice.

© Agilent Technologies, Inc. 2011  
Published in USA, December 13, 2011  
5990-6417EN



### Agilent Technologies Oscilloscopes

Multiple form factors from 20 MHz to >90 GHz | Industry leading specs | Powerful applications



**Agilent Technologies**