

Agilent M9168C PXI Programmable Step Attenuator Module

DC to 26.5 GHz



Data Sheet

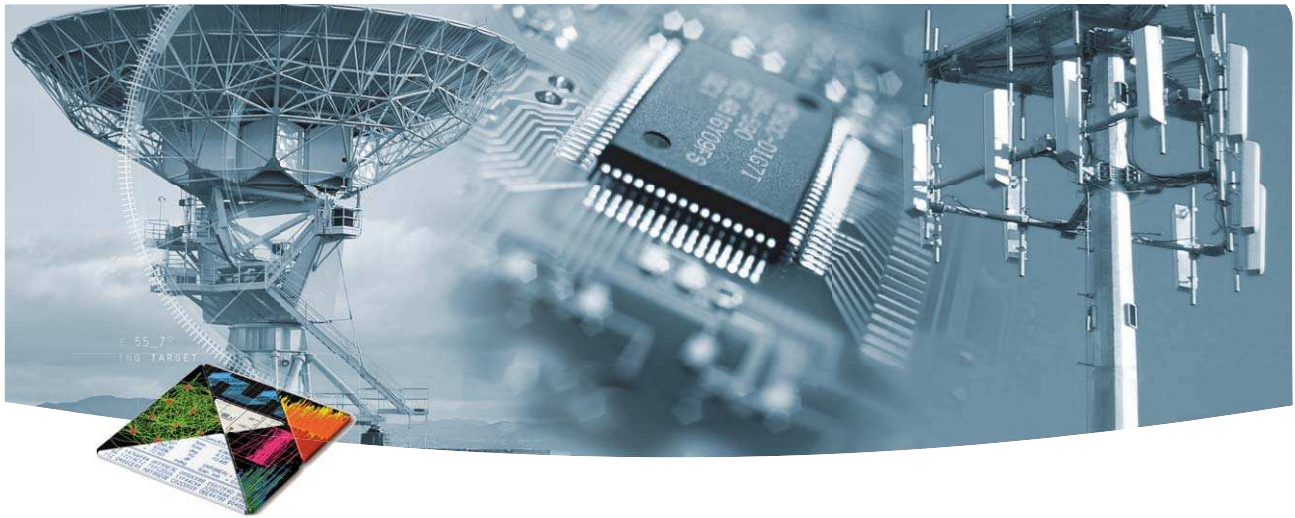


DISCOVER the Alternatives...

... Agilent **MODULAR** Products



Agilent Technologies



OVERVIEW

Introduction

Agilent has been a leading designer and manufacturer of RF and microwave step attenuators in the global marketplace for more than 60 years. RF and microwave attenuators are used extensively in microwave test systems for signal conditioning between transmitting and receiving of a device under test (DUT). Agilent designs and manufactures a comprehensive range of RF and microwave attenuators to meet your signal attenuation requirements. There is a broad range of fixed, manual, and programmable step attenuators with operating frequencies from DC up to 4/18/26.5/40/50 GHz.

Product Description

Other than connectorized standalone attenuators, Agilent also offers step attenuator modules that operate across a broad frequency range of DC to 26.5 GHz. The M9168C is a programmable step attenuator module based on the PXI hybrid platform, with a guaranteed 0.03 dB insertion loss repeatability for each section throughout the 5 million cycles operating life. Its excellent attenuation accuracy across a wide operating temperature range ensures precise measurements. The M9168C is a signal conditioning module that enhances the measurement accuracy and flexibility of PXI based RF and microwave test systems.

Applications

- RF signal path attenuation simulation
- Engineering verification
- RF receiver sensitivity test
- Adjacent channel interference

Features

- Guaranteed 0.03 dB insertion loss repeatability throughout the operating life of up to 5 million cycles per section
- Broad attenuation range of 0 to 101 dB with 1 dB step
- High attenuation accuracy and flatness of +0.4 dB at 26.5 GHz
- Soft front panel is available for ease of use

Customer values

- Peace of mind in technology from Agilent who has a proven track record of providing versatile, quality, RF and microwave step attenuators
- Reduce downtime for recalibration, improve testing efficiency and therefore maximizing throughput
- Maximize measurement accuracy and system flexibility
- Guaranteed precise measurements and stability across a wide temperature range

EASY SETUP ... TEST ... AND MAINTENANCE

Hardware platform

Connectors

Connections are made via front panel mounted 3.5 mm (f) (SMA compatible) high quality RF coaxial connectors for 50 Ω.

Compliance

The M9168C is PXI compliant, using either a PXI-H, PXI-1 or cPCI slot. Designed to benefit from fast data interfaces, the M9168C can be integrated with other test and automation modules into PXI, Compact PCI, and Hybrid chassis. The PXI format offers high performance in a small, rugged package, and it's an ideal platform for many automated test systems. A wide array of complementary PXI products are currently available and include multimeters, waveform generators, local oscillators, digitizers, and switch multiplexers.

Software platform

Drivers

Agilent's M9168C comes complete with software drivers for Windows XP, Windows Vista, Windows 7, and LabVIEW. Also included are application code examples for LabVIEW, LabWindows/CVI, Visual Studio, C, C++, MATLAB.

Soft Front Panel

The M9168C graphical user interface guides developers through the module setup process. Users can quickly configure the module parameters. The interfaces are implemented using the IVI standard supporting both IVI-COM and IVI-C.

Soft front panel of M9168C provides an intuitive approach for program simulation and troubleshooting. The soft front panel comes in Uncorrected and Corrected instance.

Uncorrected

User sees the nominal value of the attenuation in this instance, regardless of operating frequency.

Corrected

Calibration data is burnt in the module EEPROM at factory and is unique to each step attenuator module. The corrected data is the attenuation value by frequency. User could read the actual attenuation value that changes with frequency, and with accuracy up to 2 decimal points.



Figure 1a. Uncorrected instance of M9168C soft front panel

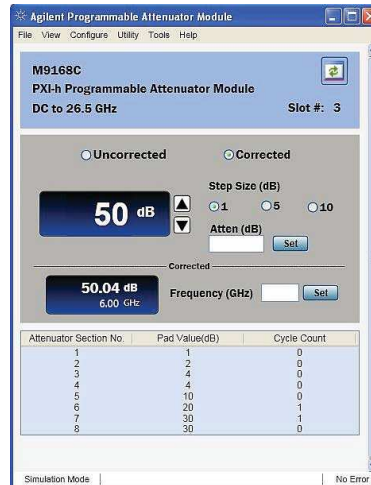


Figure 1b. Corrected instance of M9168C soft front panel

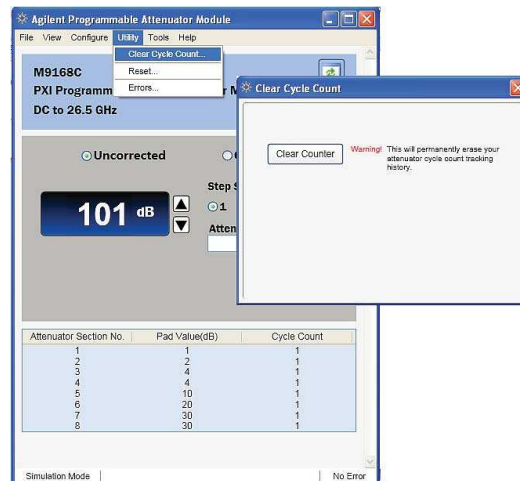


Figure 1c. Onboard cycle count per attenuation section tracking eases maintenance and reduces unexpected system downtime

EASY SETUP ... TEST ... AND MAINTENANCE continued

Easy software integration

Agilent's M9168C comes complete with software drivers for Windows XP, Windows Vista, Windows 7, and LabView. Also included are application code examples for LabView, LabWindows/CVI, Visual Studio, C, C++, C#, Visual Basic, and MATLAB, which provides the M9168C with setup and basic switching functionality. The application code examples are easily modified to quickly integrate the module into your measurement system.

Calibration intervals

The M9168C is factory calibrated and shipped with an ISO-9001, NIST-traceable calibration certificate. The recommended calibration interval is 12 months.

TECHNICAL SPECIFICATIONS

Specifications				
Frequency range	DC to 26.5 GHz			
Attenuation resolution	1 dB step			
Repeatability	0.03 dB guaranteed			
Lifecycle	5 million life cycles per section guaranteed			
Insertion loss (at 0 dB)	DC to 6 GHz: 2.5 dB 6 GHz to 18 GHz: 4.0 dB 18 GHz to 26.5 GHz: 5.0 dB			
Return loss (VSWR)	DC to 6 GHz: 16 dB (1.35) 6 GHz to 18 GHz: 11 dB (1.78) 18 GHz to 26.5 GHz: 7 dB (2.61)			
Maximum input power	1 W (+30 dBm) average 50 W peak (10 μ s max)			
Maximum reverse power	1 W (+30 dBm) average 50 W peak (10 μ s max)			
Switching speed	20 ms			
RF connector	3.5 mm (f), SMA compatible			
Connector compatibility	cPCI, PXI-H, PXI-1			
Attenuation accuracy				
Specified across operating frequency of 0°C to 50°C				
Attenuation setting for step ranges (dB)	DC to 18 GHz		18 to 26.5 GHz	
1 to 2	0.35		0.4	
3 to 6	0.55		0.7	
7 to 10	0.7		0.8	
11 to 20	1.2		1.4	
21 to 40	1.4		1.6	
41 to 60	1.9		2.5	
61 to 80	2.5		2.7	
81 to 101	3.7		4.0	
Power requirements				
Power consumption from the backplane supply is as follows:				
Voltage	+3.3 V	+5 V	-12 V	+12 V
Current	0.5 A (typical 0.2 A)	5.8 A (typical 5.5 A)	0	0.37 A (typical 0.34 A)

TECHNICAL SPECIFICATIONS continued

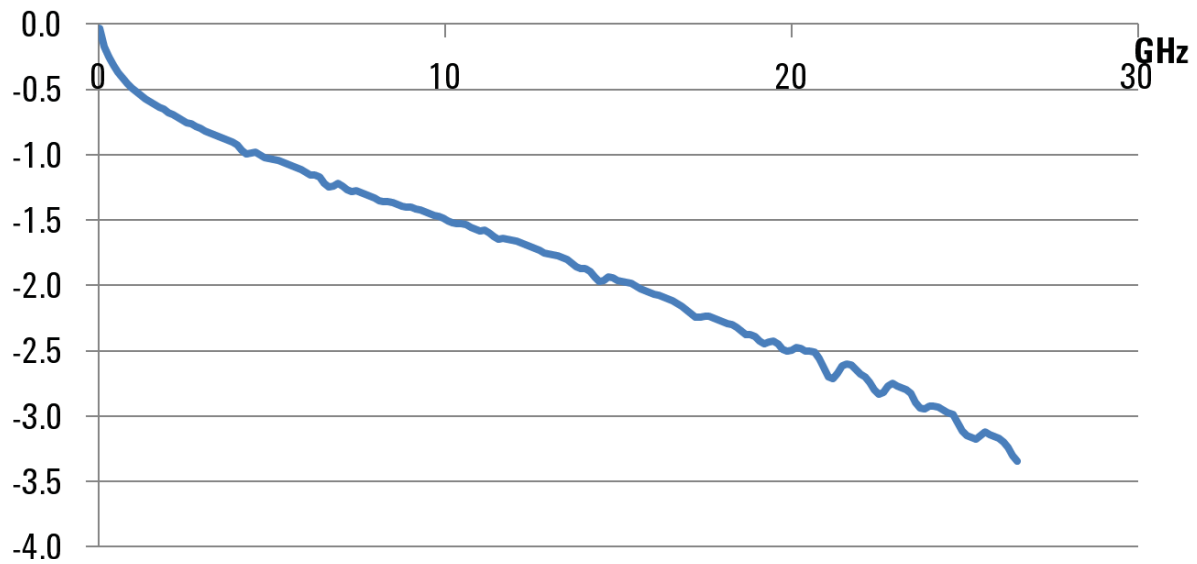
Environmental and Physical Specifications	
Temperature range	
Operating	0° to 55°C
Non-operating	-40° to 70°C
Relative humidity	
Operating	95% RF at 40°C, 24 hours cycling, repeated 5 times
Non-operating	95% RH at 40°C, 5 cycles
Vibration	
Operating random	5—500 Hz, 0.3 g RMS
Survival random vibration	5—500 Hz, 3.41 g RMS
Shock	
End use handling shock	Half sine wave form, 120 in/s, duration < 3 ms
Transportation shock	Trapezoidal, 50 g
Altitude test	
Operating/non-operation	15,000 ft (4600 m)
ESD immunity	
Air discharge	15 kV per IEC61000-4-2
Direct discharge	8 kV per IEC61000-4-2
Safety	This product has input power below the requirements as specified in the Low Voltage Directive (2006/95/EC)
EMC	EMC Standard: IEC 61326-1:2005 / EN 61326-1:2006 Emissions: CISPR 11:2003 / EN55011:2007 Immunity: IEC 61000-4-3:2002 / EN 61000-4-3:2002 Electrostatic Discharge: IEC 61000-4-2:2001 / EN 61000-4-2-:1995+A1:1998+A2:2001 EMC/EMI:CE, C-Tick
CE compliance	EMC Compatibility Directive (EMC): 2004/108/EC
Warm-up time	Refer to PXI Chassis warm-up time
Dimensions	
M9168C	3U PXI/Compact PCI standard Front panel complies with IEEE 1101.10 certification and compliance. 174.8 x 128.7 x 40.3 mm
Weight	0.93 kg
Contact Material	Beryllium copper, gold plated
Connector compatibility	PXI-H, PXI-1, cPCI

SUPPLEMENTAL SPECIFICATIONS AND CHARACTERISTICS

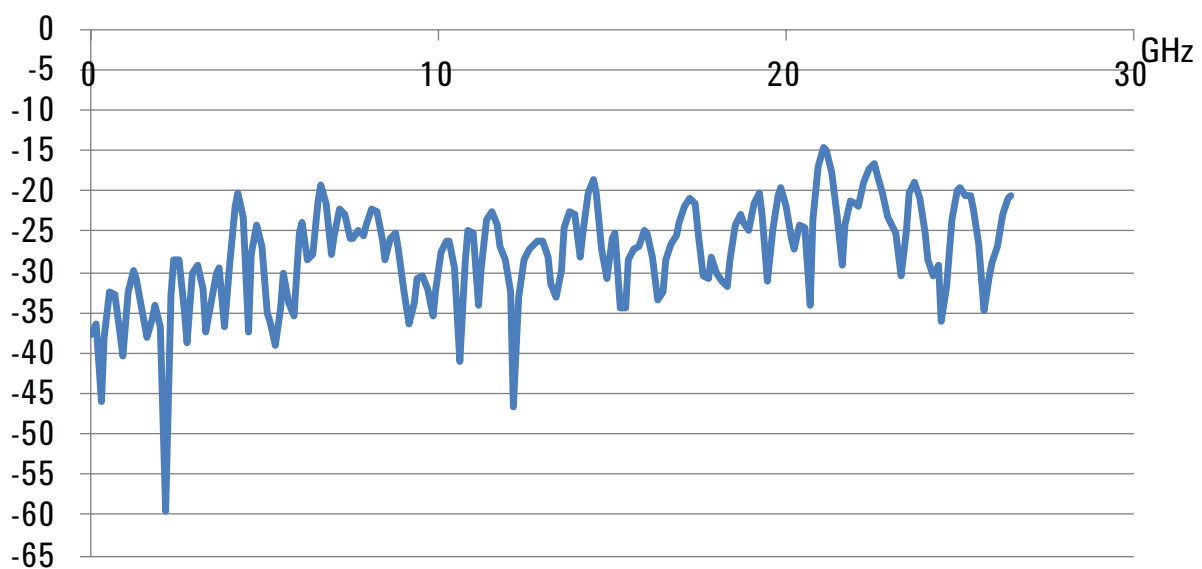
Supplemental characteristics are intended to provide useful information. They are typical but non-warranted performance parameters.

Typical Performance Graphs

Insertion loss



Return loss

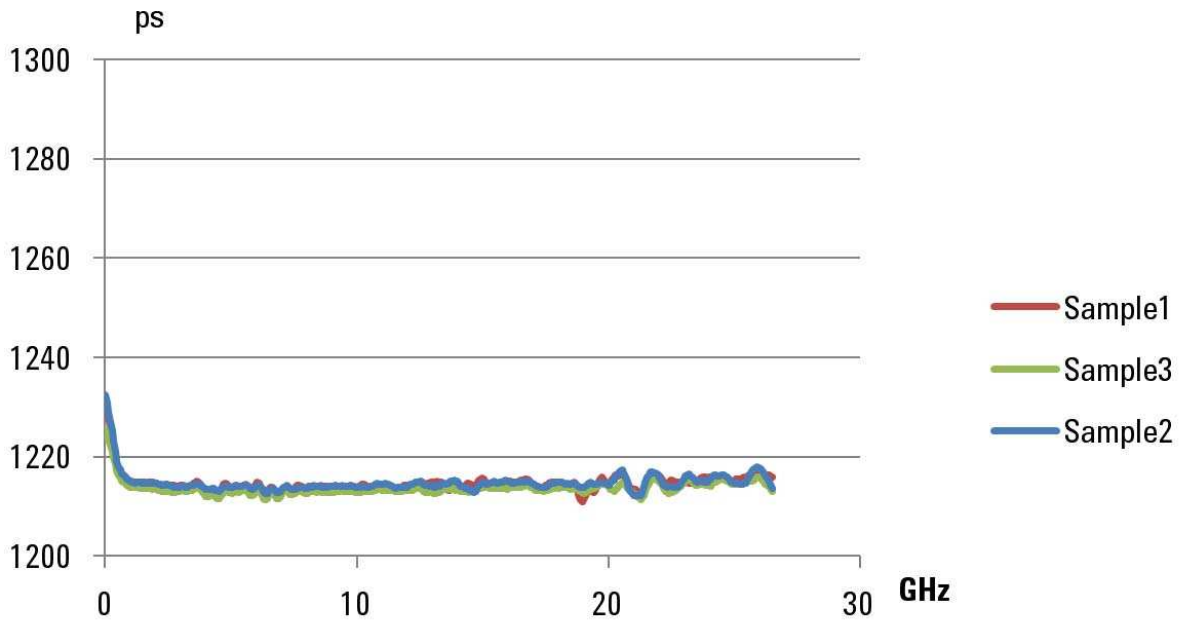


SUPPLEMENTAL SPECIFICATIONS AND CHARACTERISTICS

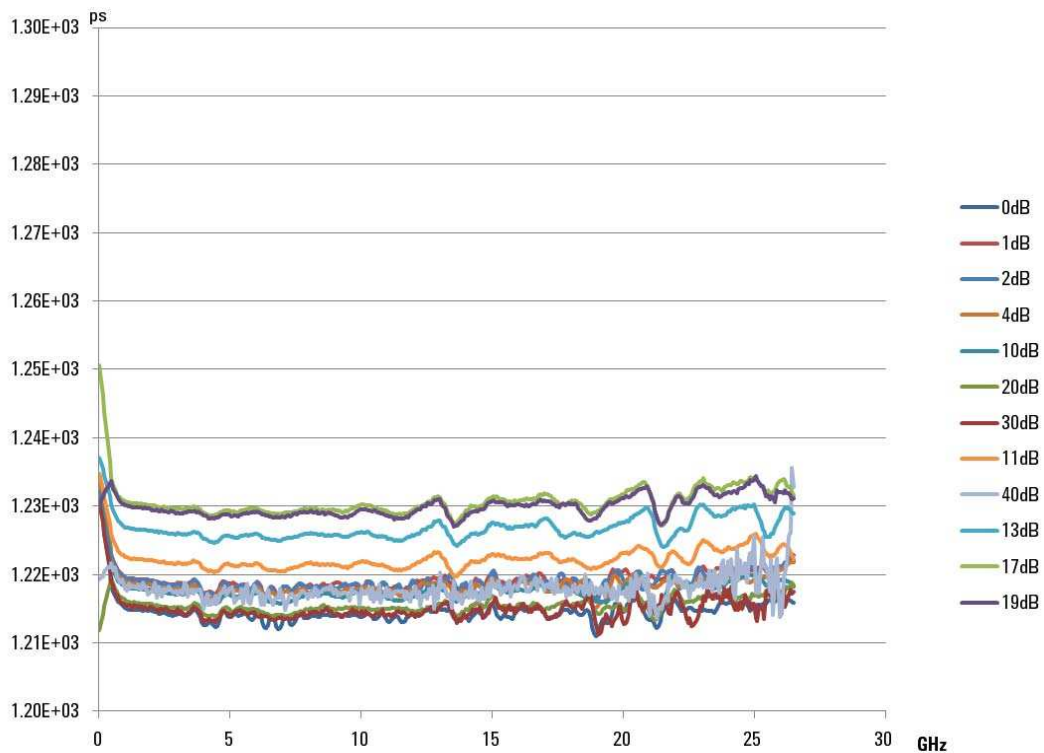
Supplemental characteristics are intended to provide useful information. They are typical but non-warranted performance parameters.

Typical Performance Graphs

Group delay at 0 dB



Group delay at different attenuator values



CONFIGURATION AND ORDERING INFORMATION

Software

Model	Description
Software development platform	Microsoft Visual Studio with C/C++ Microsoft Visual Studio .NET with C# or Visual Basic, National Instruments LabVIEW, National Instruments LabWindows CVI, The MathWorks MATLAB, Agilent VEE
Supported operating systems	Windows XP SP3, 32-bit Windows Vista 32/64-bit Windows 7 32/64-bit
Drivers provided	IVI-COM, IVI-C, LabView, MATLAB
Included GUI	Soft front panel
Application code examples	C, C++, C#, Visual Basic, VEE, MATLAB

Recommended Configuration

Model	Description
M9018A	PXIe Chassis, 18-slots, 3U, 8 GB/s
M9202A	PXIe IF Digitizer: 12-Bit, 1 GHz
M9361A	PXI Downconverter: 2.75 to 26.5 GHz
M9168C	PXI-h Programmable Step Attenuator Module, DC to 26.5 GHz

Ordering Information Typical Configuration

Model	Description
M9168C	PXI-h Programmable Step Attenuator Module, DC to 26.5 GHz

Related products

Model	Description
M9392A	PXI Vector Signal Analyzer
M9351A	PXI Downconverter, 50 MHz to 2.9 GHz
M9360A	PXI Attenuator/Preselector
M9155/6/7C	PXI Switch Modules, DC to 26.5 GHz

Model and chassis compatibility

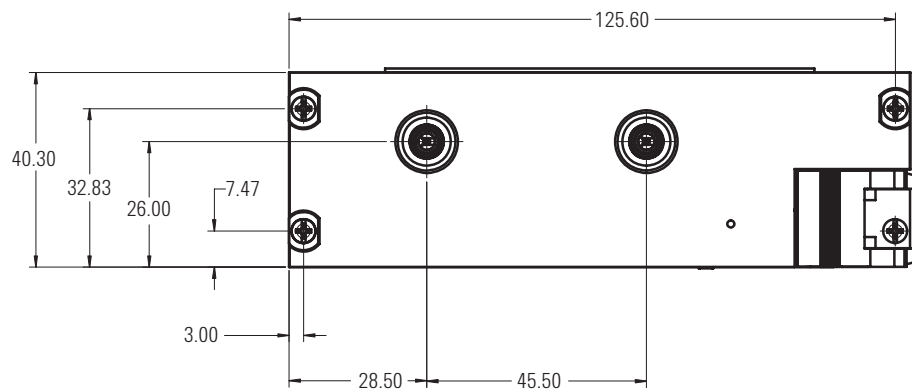
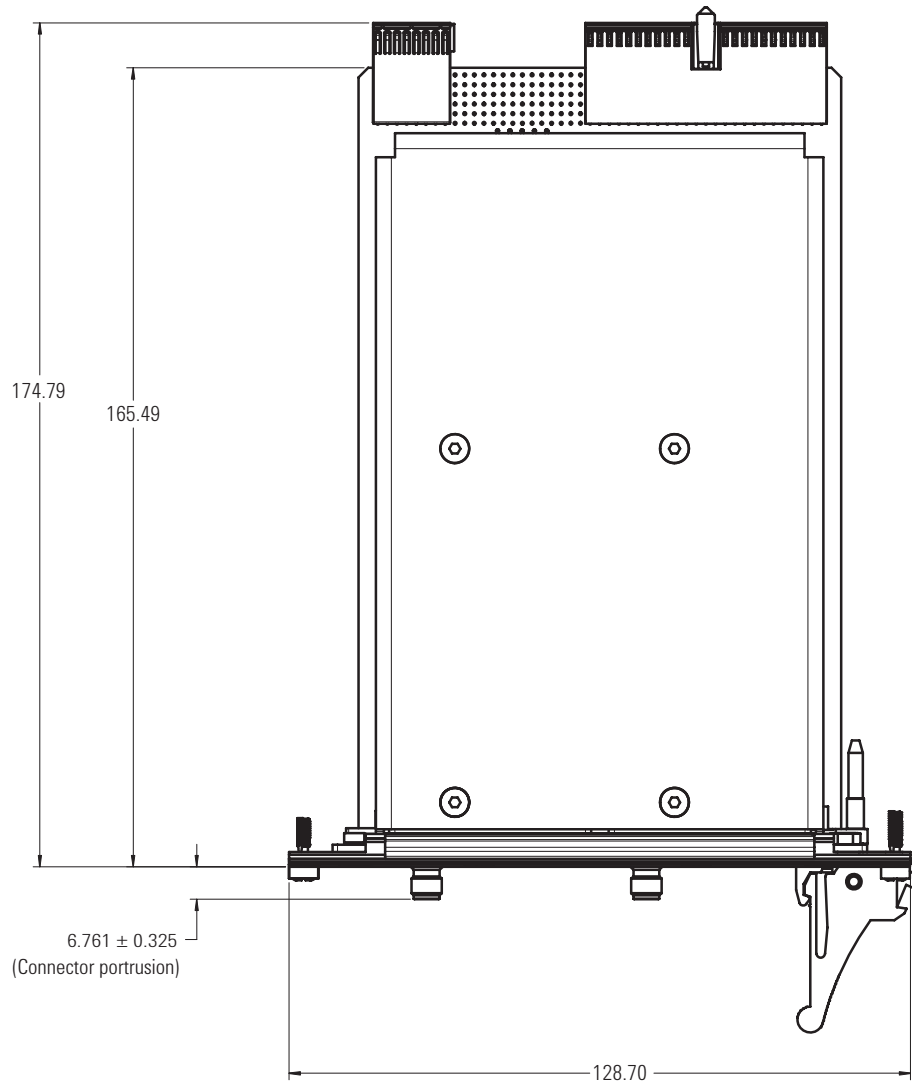
PXI chassis compatibility
Compatible with all chassis conforming to the 3U PXI and 3U cPCI specifications
Compatible with Agilent M9018A PXIe chassis, 18-slots, 3U, 8 Gb/s

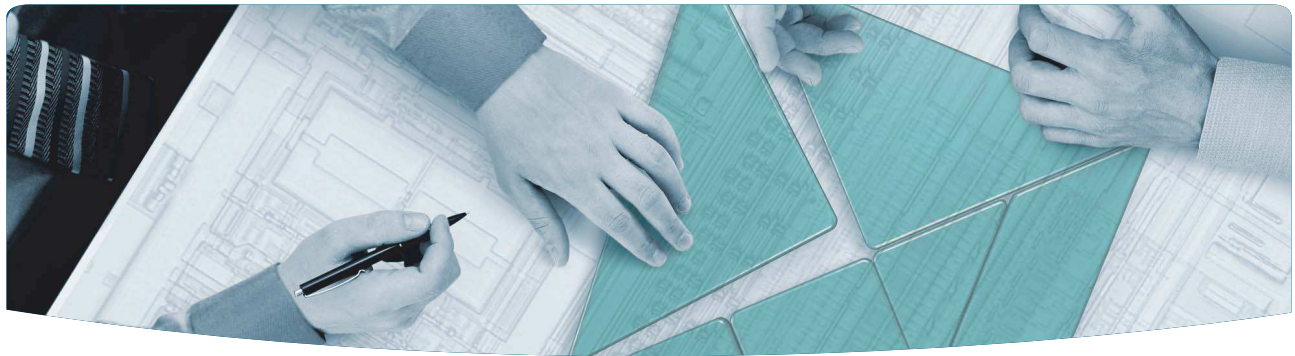
Warranty and Calibration

Advantage Services: Calibration and Warranty	
Agilent Advantage Services is committed to your success throughout your equipment's lifetime.	
M9168C-UK6	Commercial calibration certificate with test data
R-51B-001-C	1 year Return-to-Agilent warranty
R-51B-001-3C	Agilent Calibration Upfront Support Plan 3 years coverage
R-51B-001-5C	Agilent Calibration Upfront Support Plan 5 years coverage

MECHANICAL INFORMATION

Dimensions are in mm nominal, unless otherwise specified.





The Modular Tangram

The four-sided geometric symbol that appears throughout this document is called a tangram. This seven-piece puzzle originated in China a few centuries ago. The goal is to create shapes—from simple to complex—that form an identifiable silhouette. As with a tangram, the possibilities may seem infinite as you begin to create a new test system. With a set of clearly defined elements—architecture, hardware, software—Agilent can help you create the system you need, from simple to complex.



DISCOVER the Alternatives ...
... Agilent **MODULAR** Products

PXI www.pxisa.org

AXIe www.axiestandard.org

Agilent Channel Partners

www.agilent.com/find/channelpartners



Agilent Advantage Services is committed to your success throughout your equipment's lifetime.

www.agilent.com/find/advantageservices



Agilent Email Updates

www.agilent.com/find/emailupdates

PICMG and the PICMG logo, CompactPCI and the CompactPCI logo, AdvancedTCA and the AdvancedTCA logo are US registered trademarks of the PCI Industrial Computers Manufacturers Group. "PCIe" and "PCI EXPRESS" are registered trademarks and/or service marks of PCI-SIG. Microsoft, Windows, Visual Studio, Visual C++, Visual C#, and Visual Basic are either registered trademark or trademarks of Microsoft Corporation in the United States and/or other countries.

www.agilent.com

www.agilent.com/find/modular

www.agilent.com/find/PXlattenuator

For more information on Agilent Technologies' products, applications or services, please contact your local Agilent office. The complete list is available at: www.agilent.com/find/contactus

Americas

Canada	(877) 894 4414
Brazil	(11) 4197 3600
Mexico	01800 5064 800
United States	(800) 829 4444

Asia Pacific

Australia	1 800 629 485
China	800 810 0189
Hong Kong	800 938 693
India	1 800 112 929
Japan	0120 (421) 345
Korea	080 769 0800
Malaysia	1 800 888 848
Singapore	1 800 375 8100
Taiwan	0800 047 866
Other AP Countries	(65) 375 8100

Europe & Middle East

Belgium	32 (0) 2 404 93 40
Denmark	45 45 80 12 15
Finland	358 (0) 10 855 2100
France	0825 010 700*
	*0.125 €/minute
Germany	49 (0) 7031 464 6333
Ireland	1890 924 204
Israel	972-3-9288-504/544
Italy	39 02 92 60 8484
Netherlands	31 (0) 20 547 2111
Spain	34 (91) 631 3300
Sweden	0200-88 22 55
United Kingdom	44 (0) 118 927 6201

Revised: January 6, 2012

Product specifications and descriptions in this document subject to change without notice.

© Agilent Technologies, Inc. 2012 Published in USA, January 24, 2012 5990-8586EN



Agilent Technologies