



# I<sup>2</sup>C and SPI Protocol Triggering and Decode for Infiniium 90000 Series Oscilloscopes

Data sheet



**This application is available in the following license variations.**

- Order N5391A for a user-installed license
- Order Option 007 for a factory-installed license with new 90000 Series oscilloscopes
- Order N5435A Option 006 for a server-based license that works on the 9000 or 90000, Series oscilloscopes

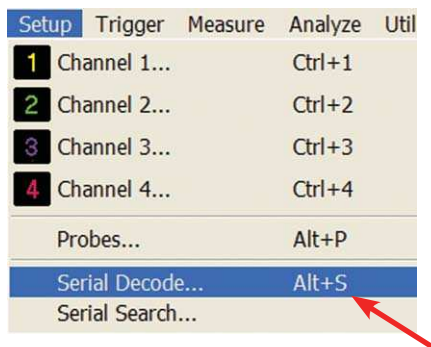


# Easily debug and test designs that include I<sup>2</sup>C or SPI protocols using your Infiniium 90000 or 8000 Series scope

Lower-speed serial bus interfaces such as I<sup>2</sup>C (inter-integrated circuit) and SPI (serial peripheral interface) are widely used today in electronic designs for chip-to-chip communication. In many designs these serial buses tend to provide content-rich points for debug and test. However, since these protocols transfer bits serially, using a traditional oscilloscope has limitations. Manually converting captured 1's and 0's to protocol requires significant effort, can't be done in real-time, and includes potential for human error. In addition, traditional scope triggers are not sufficient for specifying protocol-level conditions.

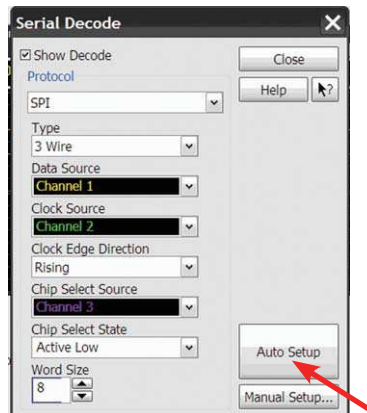
Extend your scope capability with I<sup>2</sup>C and SPI Triggering and Decode application. This application makes it easy to debug and test designs that include I<sup>2</sup>C or SPI protocols using your Infiniium 90000 or 8000 Series scope.

- Set up your scope to show I<sup>2</sup>C or SPI protocol decode in less than 30 seconds.
- Get access to a rich set of integrated protocol-level triggers.
- Save time and eliminate errors by viewing packets at the protocol level.
- Use time-correlated views to quickly troubleshoot serial protocol problems back to their timing or signal integrity root cause.



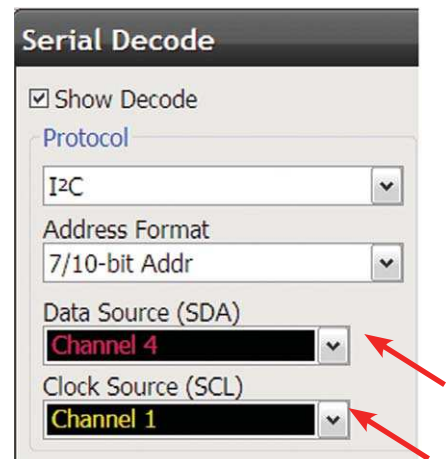
### Easy to find

Turn decode on/off in the "Setup" menu. View decode embedded on the waveform display or in the protocol viewer listing window. (See pages 4-5).



### 30 Second SPI or I<sup>2</sup>C Setup

Configure your oscilloscope to display protocol decode in under 30 seconds. Use "Auto Setup" to automatically configure sample rate, memory depth and threshold and trigger levels.



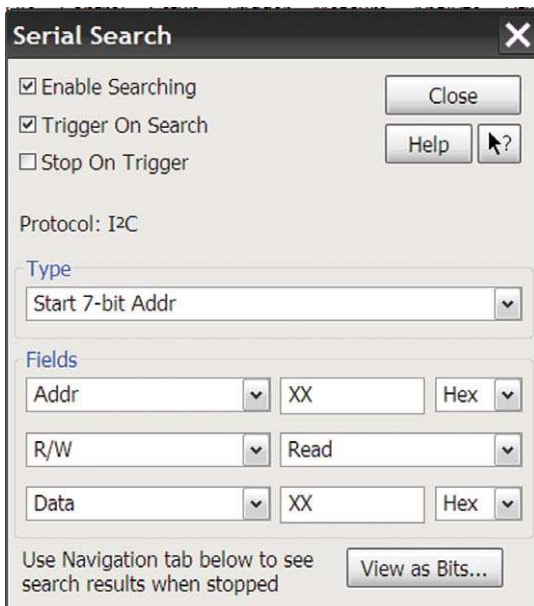
### Support for analog channels

Acquire serial buses using any combination of scope channels

# I<sup>2</sup>C and SPI protocol triggering and searching for 90000 Series

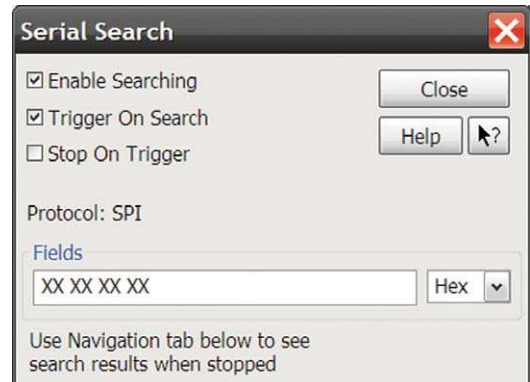
Get access to a rich set of integrated protocol level triggers. The application includes a suite of configurable protocol-level trigger conditions specific to I<sup>2</sup>C and SPI. The application uses software-based search triggering when serial triggering is selected.

With software-based protocol triggering, the oscilloscope takes signals acquired using either scope or digital channels and reconstructs protocol frames after each acquisition. It then inspects these protocol frames against specified protocol-level trigger conditions and triggers when the condition is met.



### I<sup>2</sup>C Trigger Setup

Choose a combination of address, read/write, address acknowledge and data values for I<sup>2</sup>C triggers.



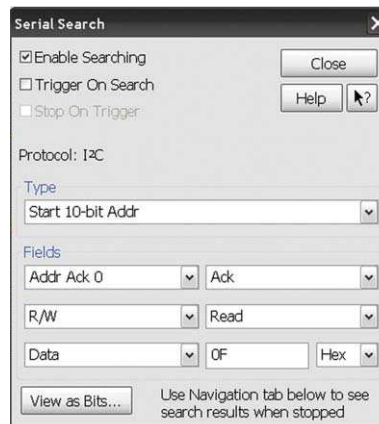
### SPI Trigger Setup

Quickly access protocol triggering via the scope's trigger menu. Specify SPI trigger in HEX, binary, or decimal up to 200 bits.



### Payload editor

Use the payload editor to specify data values word by word. Operators give additional triggering flexibility.



### Post-acquisition searching

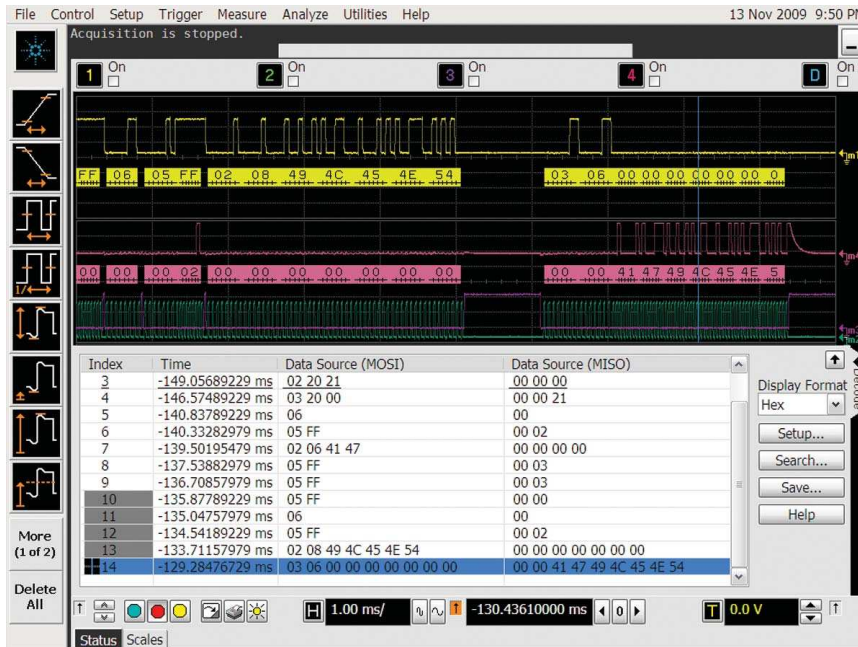
Search acquired protocol listing using a menu that is identical to the trigger menu.



### Quickly find occurrences

Quickly move to next occurrence of a specified event. Jump to the next or previous occurrence of the specified event.

# SPI protocol decode for 90000 Series

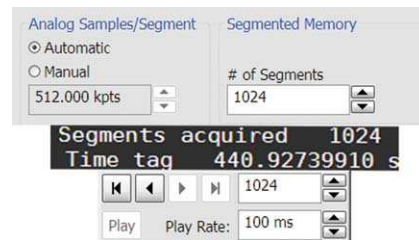
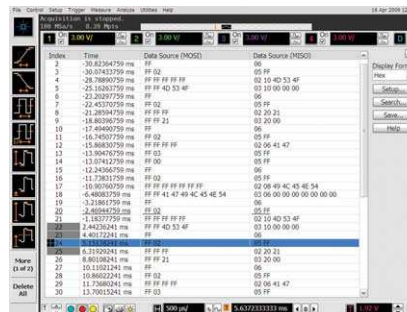


## Support for 2, 3, and 4-Wire SPI

The application supports 2-, 3-, and 4-wire SPI. Use digital channels on MS08000 models to preserve analog channels for simultaneously viewing other signals.

## 90000 Series SPI protocol decode with precise time-correlation between waveforms and listing

Agilent's SPI protocol viewer includes correlation between the waveforms and the selected packet. The selected packet, highlighted blue row in the listing, is time-correlated with the blue line in the waveform display. Move the blue tracking marker in time through waveforms and the blue bar will automatically track in the packets window. Or, scroll through the packet viewer and highlight a specific packet. The time-correlation tracking marker will move to the associated point in the waveform.



## 90000 Series SPI decode in waveform area

Utilize the oscilloscope waveform area to display decode information. For SPI, minor ticks indicate clock transitions and major ticks show the beginning and end of each word in the serial packet.

## 90000 Series full screen SPI listing

Fill the entire display with compact protocol information using the full screen listing. The protocol viewer window shows the index number, time stamp value, and data content for each serial packet in the list. Scroll through all decoded serial packets to find events of interest or errors in the transmission. Data in the listing window can be saved to a .csv or .txt file for off-line analysis or documentation.

## Long Time Captures using Segmented Memory on 90000 Series

Capture seconds to days of serial protocol. The scope fills memory as each acquisition sees its trigger condition. Segmented memory uses time tags to track time between segment acquisitions.



## I<sup>2</sup>C specifications and characteristics

I <sup>2</sup> C source (clock and data)	Analog channels 1, 2, 3, or 4 MSO models can additionally use digital channels D0 to D15 on 8000 series. Any waveform memory
Max clock/data rate	up to 3.4 Mbps (automatic)
Auto Setup on 90000 Series	Automatically configures scope settings for proper I <sup>2</sup> C decode and protocol triggering
Triggering (SW-based) 90000 Series	Start and re-start 7-bit address Start and re-start 8-bit address Start and re-start 10-bit address Start and re-start 11-bit address Specify value for 3 fields choosing between the following Read or write Address (value in HEX or binary) Address acknowledge Data (up to 20 bytes (specify in HEX, binary, ASCII, or decimal) Operators include: = on 8-bit word boundaries.
8000 Series	Start of frame, error, data frame (specify read/write)

## SPI specifications and characteristics

SPI protocols supported	2-wire SPI signals: data source and clock source 3-wire SPI signals: data source, clock source, and chip select source 4-wire SPI signals: data source (MOSI), clock source, chip select source, data source (MISO)
SPI source (all signals)	Analog channels 1, 2, 3, or 4 MSO models can additionally use digital channels D0 to D15 on 8000 Series
Max clock/data rate	Up to 50 Mbps (automatic)
Autoset on 90000 Series	Automatically configures scope settings for proper SPI decode and protocol triggering
Decode word size on 90000 Series	User-selectable from 4 to 32 bits
Decode bit order on 90000 Series	User-selectable LSB or MSB
Triggering (SW-based) 90000 Series	Data length up to 200 bits Number of words * word size < 200 bits Number of words selectable up to 50 Word size selectable from 4 to 32 bits Data operators include: =, OR
8000 Series	Data byte 0 and 1

## Ordering information

This application is compatible with all 90000 Series oscilloscope models.

Software applications	Factory-installed node-locked license for new scope purchases	User-installed node-locked license	Server-based license (N5435A option)
I <sup>2</sup> C/SPI triggering and decode	007	N5391A	006

The screenshot shows a dialog box titled "Install Option License". It has a standard Windows-style title bar with a close button. The dialog is divided into several sections:

- License Type:** Two radio buttons are present: "Local License" (unselected) and "Server License" (selected).
- License Server:** A text input field containing "dtdqa01".
- Port:** A spin box set to "27000".
- Borrow License:** A section containing:
  - "License To Borrow": A dropdown menu currently showing "SPI/I2C Protocols".
  - "Borrow For": A spin box set to "10 days".
  - A "Borrow License" button.
- Return License:** A section containing:
  - "License To Return": A dropdown menu currently showing "None".
  - A "Return License" button.

At the top right of the dialog, there are three buttons: "Close", "Help", and a question mark icon.

Sharing the application across multiple instruments? Server-based licensing allows users to borrow an application license for a specified period of time.

[www.agilent.com](http://www.agilent.com)  
[www.agilent.com/find/9000\\_I2C-SPI](http://www.agilent.com/find/9000_I2C-SPI)

### Agilent Email Updates

[www.agilent.com/find/emailupdates](http://www.agilent.com/find/emailupdates)  
Get the latest information on the products and applications you select.



[www.axistandard.org](http://www.axistandard.org)  
AdvancedTCA<sup>®</sup> Extensions for Instrumentation and Test (AXIe) is an open standard that extends the AdvancedTCA for general purpose and semiconductor test. Agilent is a founding member of the AXIe consortium.



[www.lxistandard.org](http://www.lxistandard.org)  
LAN eXtensions for Instruments puts the power of Ethernet and the Web inside your test systems. Agilent is a founding member of the LXI consortium.

### Agilent Channel Partners

[www.agilent.com/find/channelpartners](http://www.agilent.com/find/channelpartners)  
Get the best of both worlds: Agilent's measurement expertise and product breadth, combined with channel partner convenience.



Agilent Advantage Services is committed to your success throughout your equipment's lifetime. To keep you competitive, we continually invest in tools and processes that speed up calibration and repair and reduce your cost of ownership. You can also use Infoline Web Services to manage equipment and services more effectively. By sharing our measurement and service expertise, we help you create the products that change our world.

[www.agilent.com/find/advantageservices](http://www.agilent.com/find/advantageservices)



[www.agilent.com/quality](http://www.agilent.com/quality)

For more information on Agilent Technologies' products, applications or services, please contact your local Agilent office. The complete list is available at:

[www.agilent.com/find/contactus](http://www.agilent.com/find/contactus)

#### Americas

Canada	(877) 894 4414
Brazil	(11) 4197 3600
Mexico	01800 5064 800
United States	(800) 829 4444

#### Asia Pacific

Australia	1 800 629 485
China	800 810 0189
Hong Kong	800 938 693
India	1 800 112 929
Japan	0120 (421) 345
Korea	080 769 0800
Malaysia	1 800 888 848
Singapore	1 800 375 8100
Taiwan	0800 047 866
Other AP Countries	(65) 375 8100

#### Europe & Middle East

Belgium	32 (0) 2 404 93 40
Denmark	45 45 80 12 15
Finland	358 (0) 10 855 2100
France	0825 010 700*
	*0.125 €/minute
Germany	49 (0) 7031 464 6333
Ireland	1890 924 204
Israel	972-3-9288-504/544
Italy	39 02 92 60 8484
Netherlands	31 (0) 20 547 2111
Spain	34 (91) 631 3300
Sweden	0200-88 22 55
United Kingdom	44 (0) 118 927 6201

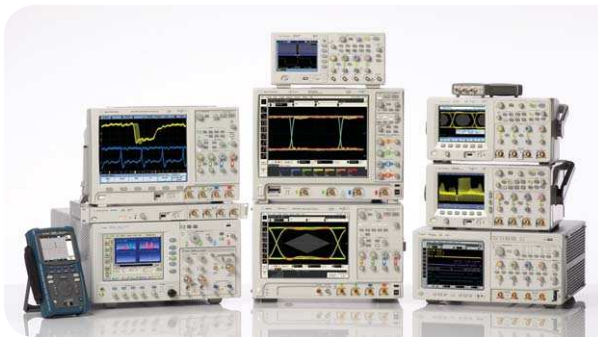
For other unlisted countries:

[www.agilent.com/find/contactus](http://www.agilent.com/find/contactus)

Revised: January 6, 2012

Product specifications and descriptions in this document subject to change without notice.

© Agilent Technologies, Inc. 2012  
Published in USA, March 11, 2012  
5989-1250EN



Agilent Technologies Oscilloscopes

Multiple form factors from 20 MHz to >90 GHz | Industry leading specs | Powerful applications



Agilent Technologies