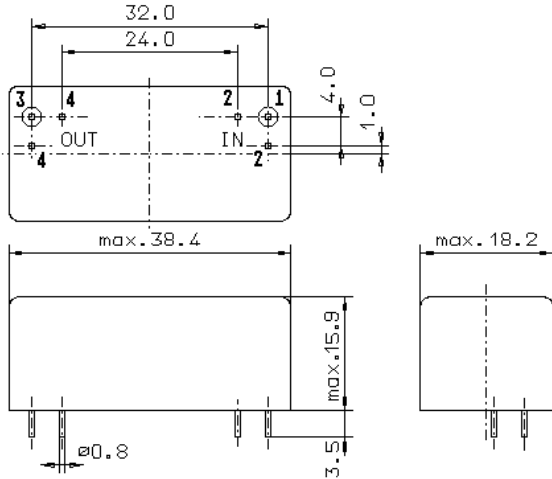


Specification for crystal filter:

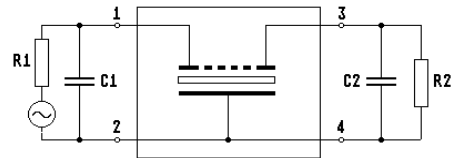
QF 10.7-15000/04

1. General

1.1. Package:



GM 1



- | | |
|-----------------------------------|------------------|
| 1.2. Type name: | QF 10.7-15000/04 |
| 1.3. Number of poles: | 4 |
| 1.4. Operating temperature range: | -20°C to +70°C |
| 1.5. Storage temperature range: | -35°C to +85°C |

2. Electric values

- | | |
|---|-----------------------------------|
| 2.1. Nominal centre frequency f_0 : | 10.7 MHz |
| 2.2. Pass band | |
| 2.2.1. Bandwidth between 3 dB - frequencies: | $> f_0 \pm 75$ kHz |
| 2.2.2. Ripple: | ≤ 2.0 dB at $f_0 \pm 50$ kHz |
| 2.2.3. Insertion loss:
(measured on smallest attenuation in pass band) | ≤ 10 dB |

2.3. Stop band

- | | |
|-------------------------------|-------------------------------|
| 2.3.1. $f_0 \pm 300$ kHz | > 60 dB (except spurious) |
| 2.3.2. Alternate attenuation: | > 80 dB (except spurious) |

2.4. Terminating impedance (input and output): $50 \Omega // 0$ pF

3. Marking on the package: manufacturer, date code
QF 10.7-15000/04

4. Environment conditions: Corresponding to Telefilter CF001

Edited by: _____ date: _____ name: _____