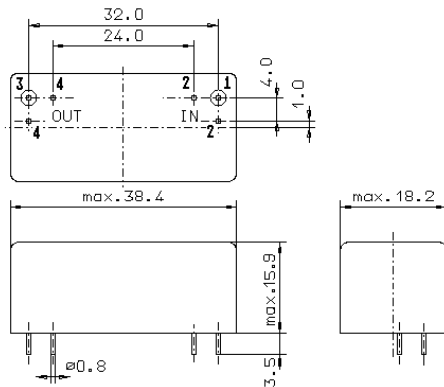


Specification for crystal filter:

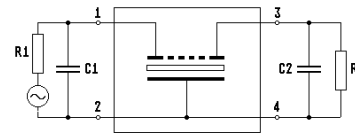
**QF 10.7-10000/09**

**1. General**

1.1. Case:



GM 1



- 1.2. Type name: QF 10.7-10000/09
- 1.3. Number of poles: 4
- 1.4. Operating temperature range: -40°C to +95°C
- 1.5. Storage temperature range: -45°C to +110°C

**2. Electric values**

- 2.1. Nominal centre frequency fo: 10.7 MHz
- 2.2. **Pass band**
  - 2.2.1. Bandwidth between 3 dB frequencies: > fo ± 50 kHz
  - 2.2.2. Ripple: < 2.0 dB at fo ± 40 kHz
  - 2.2.3. Insertion loss: < 5.0 dB
  - ( measured on smallest attenuation in pass band )

**2.3. Stop band**

- 2.3.1. fo ± 300 kHz: > 60 dB ( except spurious )
- 2.3.2. fo ± 500 kHz: > 80 dB ( except spurious )
- 2.3.3. Alternate attenuation: > 90 dB
- 2.3.4. Spurious responses: > 25 dB

- 2.4. Terminating impedance ( input and output ): 50 Ω // 0 pF
- 2.5. Max. input power level without damage: +10dBm

- 3. Marking on the case: manufacturer, date code  
QF 10.7-10000/09

- 4. Environment conditions: Corresponding to Telefilter CF001

- 5. Vibration acc. to Vectron's random vibration spec., 30g, 11ms in each direction of three mutually perpendicular axes ( total 18 shocks )

Edited by: \_\_\_\_\_ date: \_\_\_\_\_ name: \_\_\_\_\_