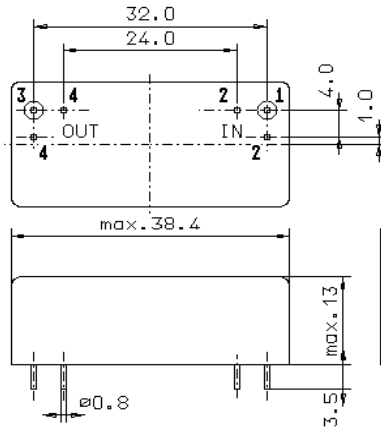


Specification for monolithic crystal filter:

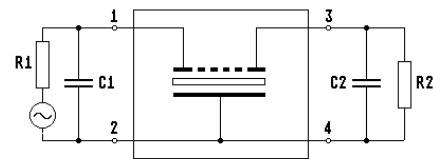
QF 10.7-0050/04

1. General

1.1. Case:



GM17



- 1.2. Type name: QF 10.7-0050/04
- 1.3. Number of poles: 4
- 1.4. Operating temperature range: 0°C to +50°C
- 1.5. Storage temperature range: -20°C to +70°C

2. Electric values

- 2.1. Nominal centre frequency f_0 : 10.7 MHz

2.2. Pass band

- 2.2.1. Centre frequency f_c : 10.7 MHz \pm 75 Hz
- 2.2.2. Bandwidth between 3 dB - frequencies:
 - $\geq f_c \pm 225$ Hz
 - $\leq f_c \pm 275$ Hz
- 2.2.3. Ripple (at $f_c \pm 100$ Hz): ≤ 0.6 dB
- 2.3.4. Phase tracking for pairs at $f_c \pm 200$ Hz: $\leq 15^\circ$
- 2.3.5. Reflection loss (at $f_c \pm 150$ Hz): ≥ 9.55 dB (i.e. VSWR < 2)
- 2.2.6. Insertion loss: ≤ 5.0 dB
(measured on smallest attenuation in pass band)

2.3. Stop band

- 2.3.1. $f_0 \pm 2.5$ kHz ≥ 60 dB
- 2.3.2. Alternate attenuation: ≥ 80 dB (except spurious)

- 2.4. Terminating impedance (input and output): 50 Ω // 0 pF

- 3. Marking on the case: manufacturer, date code
QF 10.7-0050/04

- 4. Environment conditions: Corresponding to Telefilter CF001

Edited by: _____ date: _____ name: _____