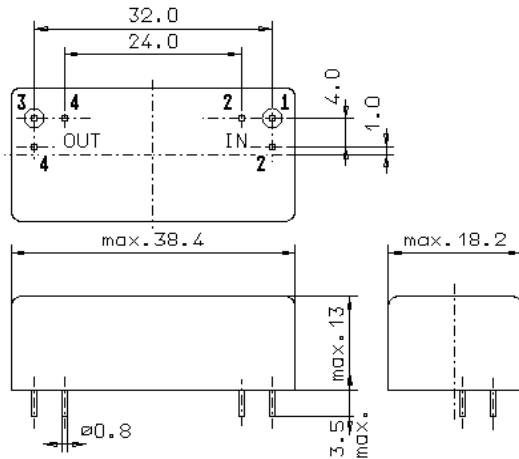


Specification for monolithic crystal filter:

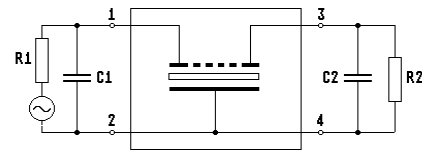
MQF 10.7 - 5000 / 14

1. General

1.1. Package:



GM17



- | | |
|-----------------------------------|------------------|
| 1.2. Type name: | MQF 10.7-5000/14 |
| 1.3. Number of poles: | 6 |
| 1.4. Operating temperature range: | -40°C to +85°C |
| 1.5. Storage temperature range: | -40°C to +85°C |

2. Electric values

- | | |
|---|--|
| 2.1. Nominal centre frequency fo: | 10.7 MHz |
| 2.2. Pass band | |
| 2.2.1. Bandwidth between 3 dB - frequencies: | ≥ ± 25 kHz |
| 2.2.2. Ripple: | ≤ 1.5 dB at fo ± 15 kHz |
| 2.2.3. Insertion loss:
(measured on smallest attenuation in pass band) | ≤ 4.0 dB |
| 2.3. Stop band | |
| 2.3.1. fo + 100 kHz | ≥ 90 dB (except spurious) |
| 2.3.2. fo - 100 kHz | ≥ 80 dB |
| 2.3.3. fo - 130 kHz | ≥ 90 dB |
| 2.3.4. Alternate attenuation: | > 90 dB (except spurious) |
| 2.4. Terminating impedance (input and output): | 5600 Ω // 1.0 pF |
| 3. Marking on the case: | firm, year week
MQF 10.7-5000/14 |
| 4. Environment conditions | |
| 4.1. Random vibration: | 0.04 g ² / Hz or 6.06 grms
20.....2000 Hz, for 5 minutes in 3 axis |
| 4.2. Shock, humidity, aging and temperature changes: | corresponding to Telefilter CF001 |

Edited by: _____ date: _____ name: _____