

Agilent M9018A

PXIe Chassis
18-slots, 3U, 8GB/s



Data Sheet

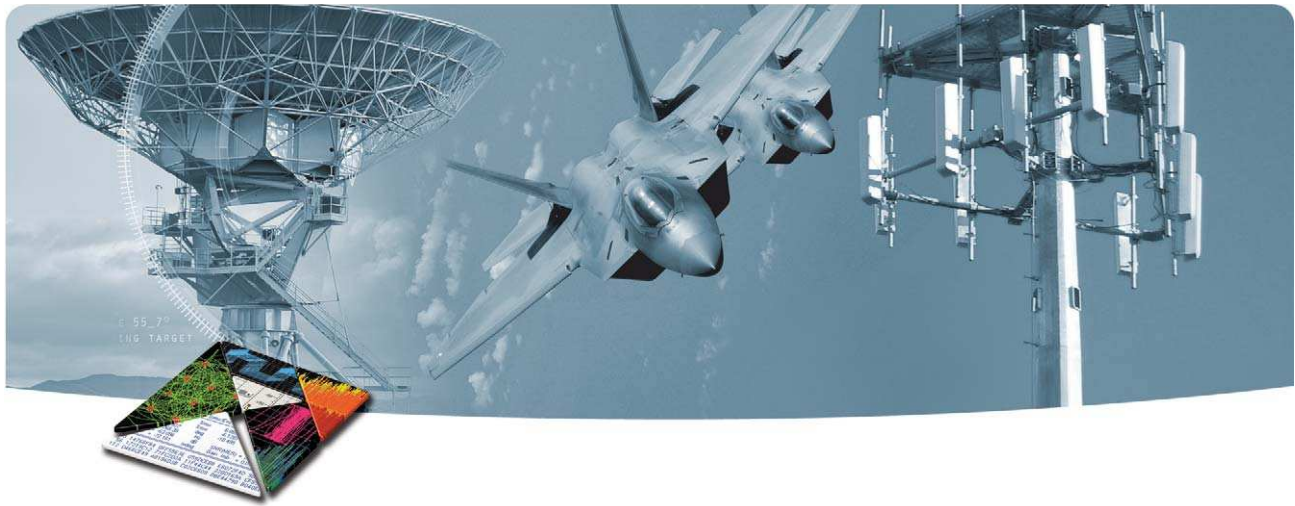


*Challenge the Boundaries of Test
Agilent Modular Products*

Anticipate — Accelerate — Achieve



Agilent Technologies



INTRODUCTION

Product description

The Agilent M9018A PXIe chassis delivers the ultimate in flexibility, compatibility, and performance. With 16 PXIe hybrid slots, it allows the system designer to mix and match the number and location of PXIe and hybrid-compatible modules. The advanced PCIe switch fabric can operate up to Gen 2 speeds, and is compatible with most PXIe controllers. The innovative cooling design allows the chassis to fit into 4U of rack space, in most cases. When combined with the latest 1U rack-mounted computer, you can build a powerful system using only 5U of rack space.

Applications

- Aerospace and defense
- Communications
- Electronics test
- Semiconductor testing



Features

- 16 PXIe hybrid slots, 1 PXIe timing slot, and 1 PXIe system slot
- 4U chassis with innovative cooling design
- High data bandwidth (maximum 8 GB/s to system slot and 4GB/s slot-to-slot)
- Advanced Gen 2 PCIe switching with four x8 links and 12 x4 links to the hybrid slots
- Configurable PXIe system slot

Customer values

- All slots are hybrid-compatible, providing complete flexibility in module placement
- Advanced PCIe switching enables high-performance applications, and ensures compatibility with most embedded controllers
- The innovative cooling design saves rack space and lowers maintenance costs
- Up to 867 watts of power supports most application requirements

EASY SETUP ... TEST ... AND MAINTENANCE

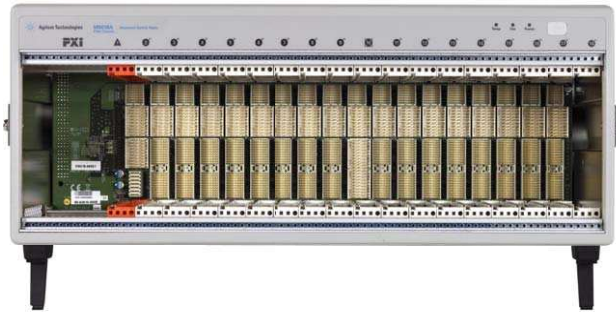


Figure 1. 18-slot PXle backplane

Backplane configuration

The Agilent M9018A chassis provides 16 hybrid-compatible slots for the ultimate in flexibility and compatibility. This capability allows the system designer to mix and match the number and location of PXle and hybrid-compatible modules. The hybrid slots are broken into two segments, each serviced by its own PCIe to PCI bridge.

Hardware platform

Compliance

The M9018A chassis is fully compliant with the PXI Express specification. Each hybrid-compatible slot accepts PXle, hybrid-compatible, and 32-bit cPCI/PXI-1 modules (without J2 connector). PXI-1 modules with both J1 and J2 connectors must be converted to hybrid format to be compatible. The PXle system timing slot accepts either a PXle timing module or a PXle peripheral module. The system slot accepts a PXle controller up to 4 slots wide.

The hybrid slots are organized into three trigger bus segments with configurable interconnections between segments.

The system slot has a flexible link configuration that can be configured for most PXle controllers, whether embedded or external. Both 2-link (2x8) and 4-link (4x4) configurations are available. A 2-link configuration optimized for the M9021A is also provided (a 2x8, 2-link configuration, with link 2 inactive).

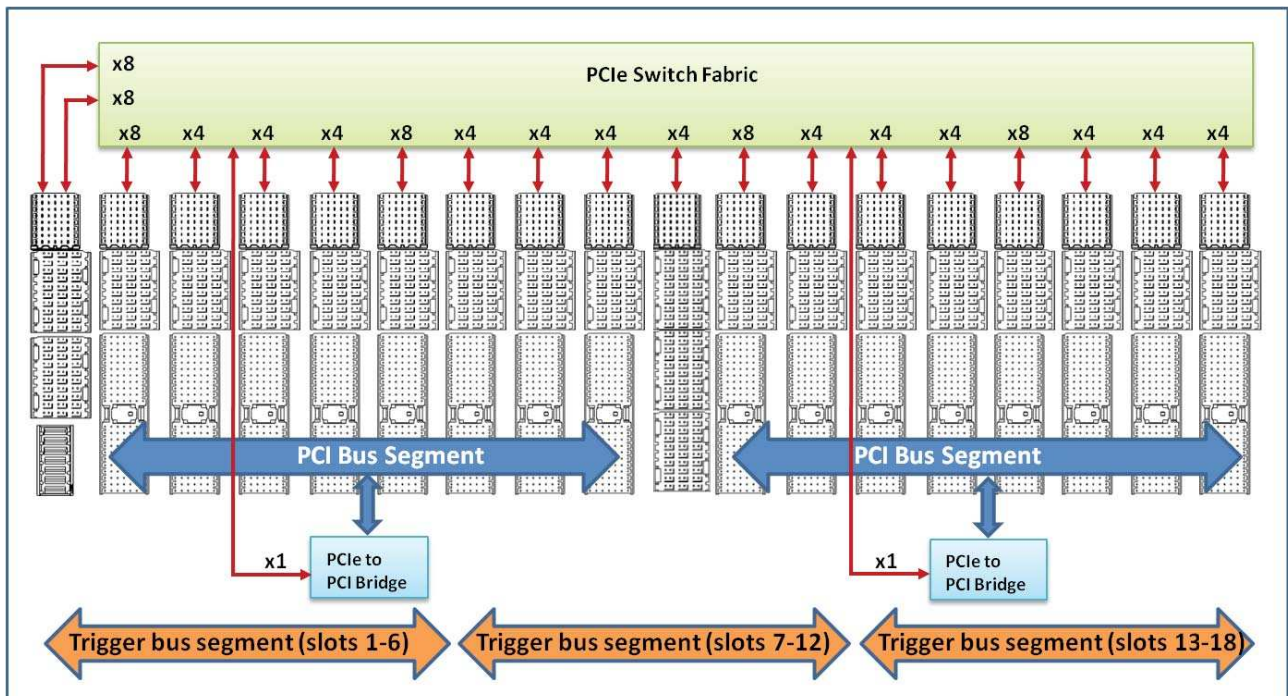


Figure 2. M9018A backplane block diagram

EASY SETUP ... TEST ... AND MAINTENANCE

Advanced PCIe switching

The Agilent M9018A contains an advanced PCIe switch fabric that operates at up to Gen 2 speeds. Four of the PXIe peripheral slots have a x8 PCIe link providing a maximum data bandwidth of 4 GB/s. The 12 remaining peripheral slots have a x4 PCIe link providing a maximum data bandwidth of 2 GB/s. The system slot has a maximum data bandwidth of 8 GB/s when all 16 PCIe lanes are utilized.

The advanced switch fabric also allows for peer-to-peer communications. Any peripheral slot can communicate with any other peripheral slot without utilizing the system slot PCIe links. The PCIe switches have a large crossbar capacity, allowing flexible placement of peer-to-peer modules without impacting data bandwidth.

Innovative cooling

The M9018A chassis has an innovative cooling design that allows it to fit into 4U of rack space. This represents a 20 percent reduction in occupied rack space, considering most PXI chassis require 5U or more for air-flow. This space can be utilized for an external 1U controller via PCIe cable, resulting in a system that requires no more rack space than other chassis with an embedded PC controller.

The innovative cooling design uses auto-speed fans to expel hot air out the back rather than the top. This allows other instruments with bottom air intakes to be placed directly above the chassis. In addition, cool air is pulled into the chassis from multiple locations, including the front, sides, and bottom of the chassis. Agilent-exclusive "air-inlet" modules can also be used to supply more cool air from the front of the chassis, so the air is directed to the other slots. These features allow the system designer to decide how to best cool the chassis, providing more design flexibility than other PXIe chassis.



Figure 3. Y1214A Air Inlet Kit

Lower maintenance costs

The Agilent M9018A was designed to reduce maintenance costs. The innovative air-flow design does not require air filters to maintain. In addition, the power supply and fans can be removed while the chassis is mounted in a rack, allowing the chassis to be serviced, while keeping DUT cabling and modules in place.

System monitoring

The Agilent M9018A has a complete set of system monitoring functions for power rail voltages, module exhaust temperatures, and fan speeds. For temperature measurements, the chassis utilizes eight temperature sensors located on the top of the backplane, in the path of the module exhaust. Module exhaust temperatures and power rail voltages can be monitored via a software API or the soft front panel interface. A DB-9 connector is also available at the rear of the chassis for remote inhibit and power rail monitoring.

The chassis has configurable alarms that can be monitored via front panel LEDs, soft front panel interface, or software API.

EASY SETUP ... TEST ... AND MAINTENANCE

Software platform

Drivers

The M9018A chassis comes complete with IVI-COM, IVI-C, and LabVIEW drivers. Windows XP®, Windows Vista®, and Windows 7® operating systems are supported, and applications can be completed using a variety of software tools including LabVIEW, LabWindows/CVI, MATLAB, VEE, Visual Basic, VisualStudio.NET® (C/C++, C#, VB.NET).

Soft front panel interface

A soft front panel interface is provided to monitor and control the PXIe chassis with the following functions:

- Trigger configuration
- Chassis fan speed, temperatures, and rail voltage monitoring
- Alarms for fan speed, temperature, and rail voltage
- Chassis information

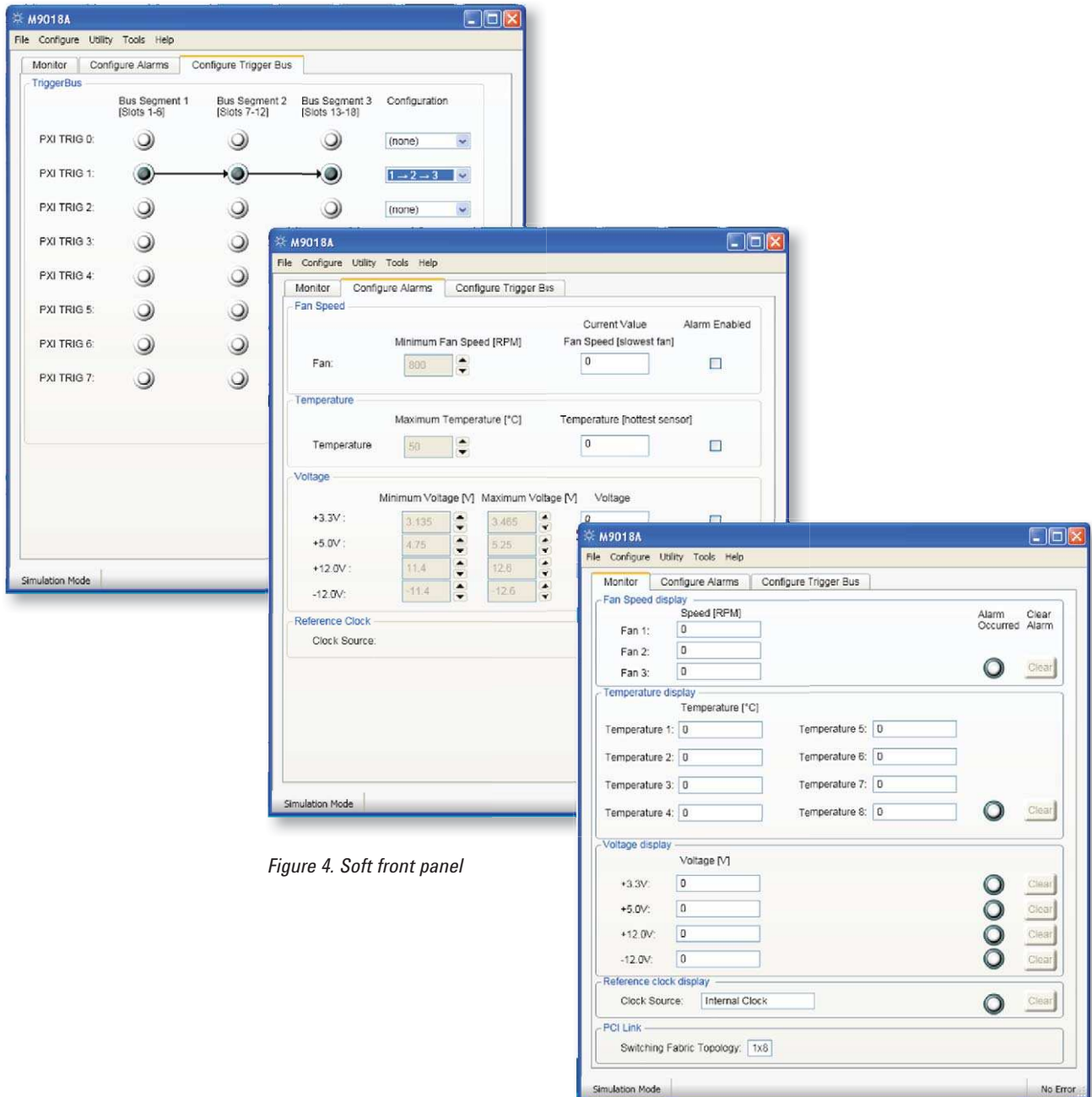


Figure 4. Soft front panel

TECHNICAL SPECIFICATIONS

Chassis characteristics

Standards compliance

PXI-5 PXI Express hardware specification

PXI-1 hardware specification Rev 2.2

PICMG EXP.0 R1.0 specification

Backplane

Module size	3U
Total slots	18
Hybrid compatible slots	16
PXle system slot	1 (with three system expansion slots)
PXle timing slot	1 (also accepts PXle module)
Module compatibility	PXle, PXI-hybrid, PXI-1 (J1-only), and cPCI (J1-only)

Mechanical

Size	444.4 mm W x 191.8 mm H x 466 mm D (with feet installed)
	444.4 mm W x 177.8 mm H x 466 mm D (with feet removed)
	4U x 1 rack width
Weight (without modules)	15.5 kg (34 lbs)

Power supply characteristics

AC input

Operating voltage/power (low-line)	100-120V, 1000 W (<i>nominal</i>)
Operating voltage/power (high-line)	220-240V, 1200 W (<i>nominal</i>)
Input frequency range	50/60 Hz
Overcurrent protection	Internal fuse in line

DC output power

Total DC power ¹	
220-240 Vac input	867.5 W
100-120 Vac input	717.5 W

1. Includes 5V_{AUX} supply (7.5 W)

TECHNICAL SPECIFICATIONS

Power supply characteristics, continued

DC supplies (220-240 Vac input)

Voltage	Maximum current ¹	Load regulation	Maximum ripple and noise (20 MHz BW)
+3.3 V	60 A ²	1%	1.5% (pk-pk)
+5 V	58.8 A	1%	1% (pk-pk)
+12 V	51.3 A ²	1%	1% (pk-pk)
-12 V	4 A ²	1%	1% (pk-pk)
5 VAUX	1.5 A	1%	50 mV (pk-pk)

DC supplies (100-120 Vac input)

The maximum current from each supply rail is the same for both low-line and high-line inputs, however, the total power supplied for all rails (except 5 VAUX) must not exceed 710 W on lowline (100-120 Vac input).

PXI Express backplane continuous current capacity

Slot	+3.3 V	+5 V	+12 V	- 12 V	5 VAUX
System controller slot	9 A	9 A	11 A	0 A	1 A
System timing/PXle slot	6 A	0 A	4 A	0 A	1 A
PXle hybrid slot	6 A	6 A	4 A	1 A	1 A

1. The total power supplied for all rails (except 5VAUX) must not exceed 860 W.
2. The total power supplied for 3.3V, 12 V, and -12 V rails must not exceed 616 W.

Chassis cooling and power dissipation characteristics

Slot airflow direction	Bottom of module to top of module
Chassis cooling intake	Bottom of front bezel, side panels, and bottom panel of chassis
Chassis cooling exhaust	Rear of chassis
Chassis cooling fans	Three 186 cfm fans on rear panel with HIGH/AUTO speed selector
Power dissipation, system slot	140 W max
Power dissipation, user slot	42 W max ¹
Power dissipation, timing slot	42 W max ¹

1. Maximum per slot power dissipation at 55° C with 15° C temperature rise; requires: a) that the chassis bottom not be blocked (1U rack space below the chassis or feet extended), or b) two air inlet modules in slots 9, 10, or 11, and a slot blocker in empty controller slots. Module cooling can be impacted by each module's resistance to air flow.

TECHNICAL SPECIFICATIONS

Clocks and triggers	
10 MHz system clock (PXI_CLK10)	
Maximum slot-to-slot skew	155 ps
Accuracy	25 ppm
Output amplitude (10 MHz REF Out BNC)	1 Vpk-pk $\pm 20\%$ square-wave into 50 Ω 2 Vpk-pk unloaded
Output impedance (10 MHz REF Out BNC)	50 $\Omega \pm 5 \Omega$
100 MHz system clock (PXIe_CLK100)	
Maximum slot-to-slot skew	120 ps
Accuracy	25 ppm
External 10 MHz clock source input requirements	
Frequency input	10 MHz ± 100 PPM
Input signal (10 MHz REF In BNC)	100 mVPP to 5 VPP (square-wave or sine-wave)
Input impedance (10 MHz REF In BNC)	50 $\Omega \pm 5 \Omega$
Input signal (PXI timing slot PXI_CLK10_IN)	5 V or 3.3 V TTL signal
PXI Star Trigger	
Maximum slot-to-slot skew	250 ps
PXI Differential Star Triggers	
Maximum slot-to-slot skew	150 ps
Maximum differential skew	25 ps

Environmental characteristics ^{1,2}		
Operating and storage conditions		
Humidity	Type tested at 95%, +40 °C (non-condensing)	
	Operating	Storage
Temperature	0 °C to 55 °C	-40 °C to 70 °C
Altitude	up to 2 km (6,562 ft)	up to 3 km (9,842 ft)
Vibration		
Operating random vibration	Type-tested at 5 to 500 Hz, 0.21 g rms	
Survival random vibration	Type-tested at 5 to 500 Hz, 2.09 g rms	
Acoustical emissions (referenced to 1pW)		
	Auto fan (25 °C ambient)	High fan
Sound pressure level ³	53 dBA	69 dBA
Sound power	59 dBA	77 dBA

1. Samples of this product have been type tested in accordance with the Agilent Environmental Test Manual and verified to be robust against the environmental stresses of storage, transportation, and end-use; those stresses include, but are not limited to, temperature, humidity, shock, vibration, altitude, and power line conditions.

2. Test methods are aligned with IEC 60068-2 and levels are similar to MIL-PRF-28800F class 3.

3. At operator position.

TECHNICAL SPECIFICATIONS

Regulatory characteristics

Safety

Complies with European Low Voltage Directive 2006/95/EC

- IEC/EN 61010-1, 2nd Edition
- Canada: CSA C22.2 No. 61010-1
- USA: UL std no. 61010-1, 2nd Edition

German acoustic statement

Acoustic noise emission
LpA <70 dB
Operator position
Normal position
Per ISO 7779

Gerauschemission
LpA <70 dB
Am Arbeitsplatz
Normaler Betrieb
Nach DIN 45635 t.19

EMC

Complies with European EMC Directive 2004/108/EC

- IEC/EN 61326-1
 - CISPR Pub 11 Group 1, Class A
 - AS/NZS CISPR 11
 - ICES/NMB-001
- This ISM device complies with Canadian ICES-001
Cet appareil ISM est conforme à la norme NMB-001 du Canada



CONFIGURATION

Hardware

Model	Description
M9018A	PXIe chassis
Includes:	Standard PXI filler panels, getting started guide, drivers, and Agilent I/O libraries

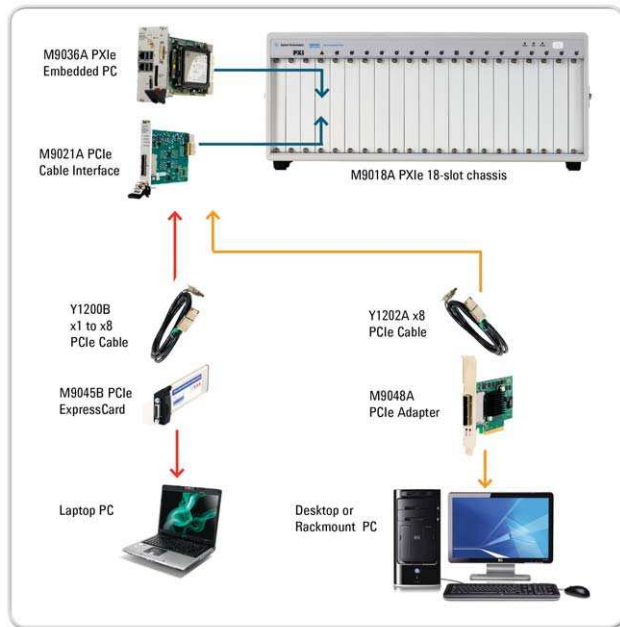


Figure 5. Configuration

Recommended configuration

Configure the Agilent M9018A PXIe chassis as follows:

- Select a PXIe system module, PCIe cable interface, or embedded controller (the Agilent M9021A and M9036A are recommended)
- If an external computer is being used, select an appropriate PC interface card (the Agilent M9048A is recommended)
- Select an appropriate cable to connect the computer interface board to the chassis interface (the Y1202A is recommended to connect the M9048A and M9021A)
- Select rack mount and EMC filler panel kits as required
- Select Y1212A Slot Blocker Kits and Y1214A Air Inlet if required

Accessories

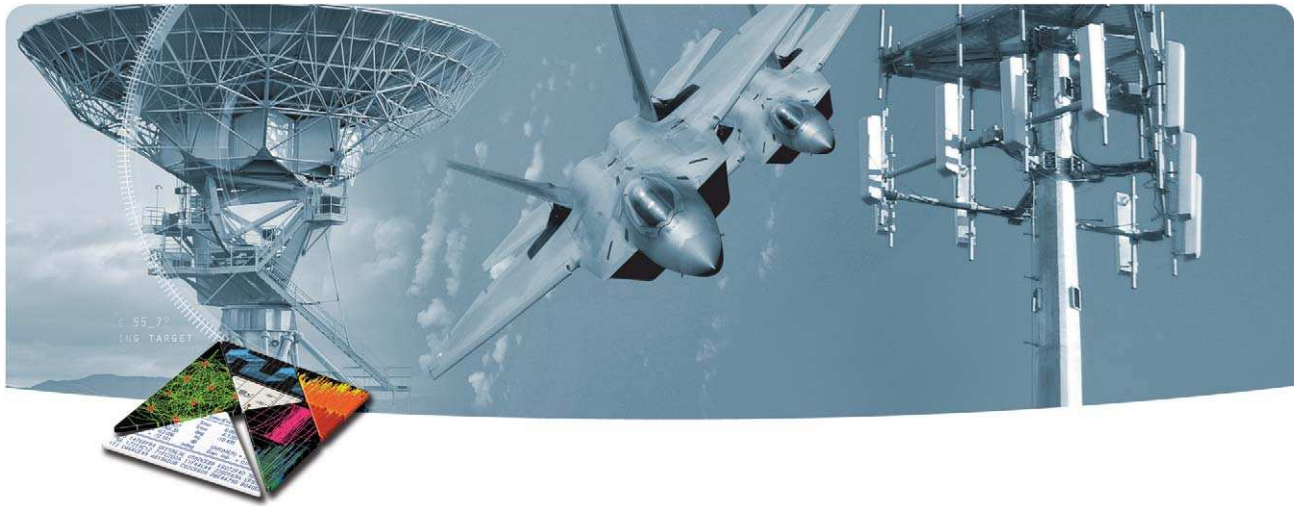
Model	Description
Y1212A	Slot Blocker Kit: 5 single-slot
Y1213A	PXI EMC filler panel kit: 5 single-slot
Y1214A	Air inlet module kit (includes controller slot blocker)
Y1215A	Chassis rack mount kit for M9018A

Related products

Model	Description
M9021A	PCIe cable interface: Gen 2, x8
M9036A	Embedded PXIe PC controller
M9045B	PCIe ExpressCard adaptor: Gen 1
Y1200B	PCIe cable: x1 to x8, 2.0m (used with M9045B)
M9048A	PCIe desktop PC adaptor: Gen 2, x8
Y1202A	PCIe cable: x8, 2.0m (used with M9047A)

Software

Model	Description
Supported operating systems	Microsoft Windows® XP (32-bit), Microsoft Windows® Vista (32/64-bit), Microsoft Windows® 7 (32/64-bit)
Standard compliant drivers	IVI-COM, IVI-C, LabVIEW
Supported application development environments (ADE)	VisualStudio® (VB.NET, C#, C/C++), LabVIEW, LabWindows/CVI, VEE
Agilent IO Libraries	Includes: VISA Libraries, Agilent Connection Expert, IO Monitor



ORDERING

Model	Description
M9018A	PXIe chassis: 18-slot, 3U, 8GB/s
Opt 900-932	Power cord options

Definitions for specifications

Specifications describe the warranted performance of calibrated instruments that have been stored for a minimum of 2 hours within the operating temperature range of 0 to 55°C, unless otherwise stated, and after a 45 minute warm-up period. Data represented in this document are specifications unless otherwise noted.

Characteristics describe product performance that is useful in the application of the product, but that is not covered by the product warranty. Characteristics are often referred to as Typical or Nominal values.

- *Typical describes characteristic performance, which 80% of the instruments will meet when operated over a 20 to 30°C temperature range. Typical performance is not warranted.*
- *Nominal describes representative performance that is useful in the application of the product when operated over a 20 to 30°C temperature range. Nominal performance is not warranted.*

Note: All graphs contain measured data from several units at room temperature unless otherwise noted.

WARRANTY AND CALIBRATION

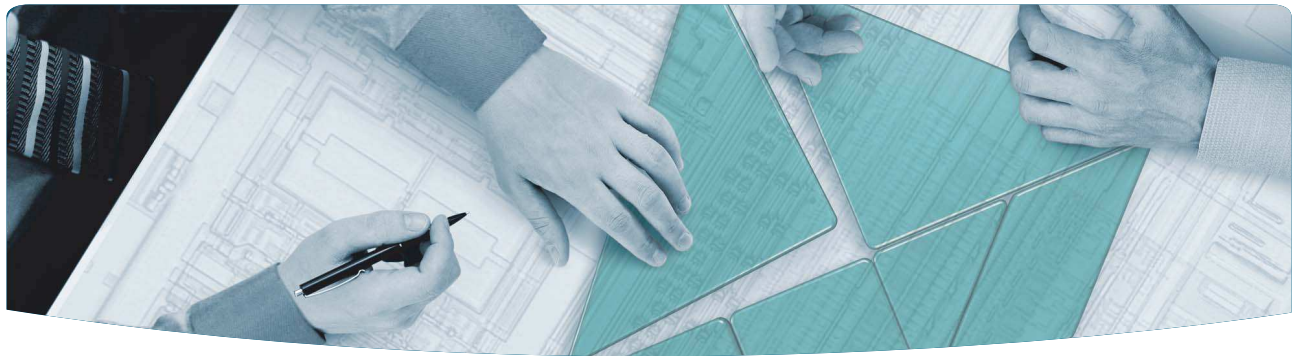
Advantage Services: Calibration and Warranty

Agilent Advantage Services is committed to your success throughout your equipment's lifetime.

Warranty ¹

	Standard warranty is 1 year
R-51B-001-3C	1 year return-to-Agilent warranty extended to 3 years
R-51B-001-5C	1 year return-to-Agilent warranty extended to 5 years

1. Options not available in all countries.



The Modular Tangram

The four-sided geometric symbol that appears in this document is called a tangram. The goal of this seven-piece puzzle is to create identifiable shapes—from simple to complex. As with a tangram, the possibilities may seem infinite as you begin to create a new test system. With a set of clearly defined elements—hardware, software—Agilent can help you create the system you need, from simple to complex.



*Challenge the Boundaries of Test
Agilent Modular Products*



www.agilent.com/find/myagilent

PXI www.pxisa.org

AXIe www.axiestandard.org

Agilent Solutions Partners
www.agilent.com/find/solutionspartners



Agilent Advantage Services is committed to your success throughout your equipment's lifetime.

www.agilent.com/find/advantageservices

PICMG and the PICMG logo, CompactPCI and the CompactPCI logo, AdvancedTCA and the AdvancedTCA logo are US registered trademarks of the PCI Industrial Computers Manufacturers Group. "PCIe" and "PCI EXPRESS" are registered trademarks and/or service marks of PC-SIG. Microsoft, Windows, Visual Studio, Visual C++, Visual C#, and Visual Basic are either registered trademark or trademarks of Microsoft Corporation in the United States and/or other countries.

www.agilent.com
www.agilent.com/find/modular
www.agilent.com/find/pxi-chassis

For more information on Agilent Technologies' products, applications or services, please contact your local Agilent office. The complete list is available at: www.agilent.com/find/contactus

Americas

Canada	(877) 894 4414
Brazil	(11) 4197 3500
Mexico	01800 5064 800
United States	(800) 829 4444

Asia Pacific

Australia	1 800 629 485
China	800 810 0189
Hong Kong	800 938 693
India	1 800 112 929
Japan	0120 (421) 345
Korea	080 769 0800
Malaysia	1 800 888 848
Singapore	1 800 375 8100
Taiwan	0800 047 866
Other AP Countries	(65) 375 8100

Europe & Middle East

Belgium	32 (0) 2 404 93 40
Denmark	45 70 13 15 15
Finland	358 (0) 10 855 2100
France	0825 010 700*
	*0.125 €/minute
Germany	49 (0) 7031 464 6333
Ireland	1890 924 204
Israel	972-3-9288-504/544
Italy	39 02 92 60 8484
Netherlands	31 (0) 20 547 2111
Spain	34 (91) 631 3300
Sweden	0200-88 22 55
United Kingdom	44 (0) 118 9276201

For other unlisted Countries: www.agilent.com/find/contactus

Revised: October 14, 2010

Product specifications and descriptions in this document subject to change without notice.

© Agilent Technologies, Inc. 2012
Printed in USA, October 25, 2012
5990-6583EN



Agilent Technologies