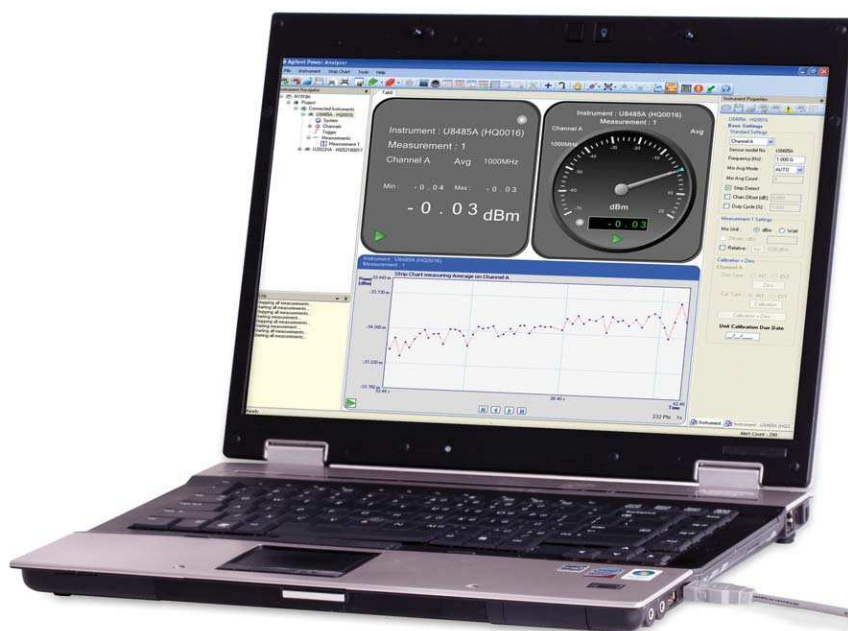


Agilent U8480 Series USB Thermocouple Power Sensors

Data Sheet



*The World's Fastest
USB Thermocouple
Power Sensor*



Anticipate — Accelerate — Achieve



Agilent Technologies

Improve your power measurement throughput

Improve your power measurement throughput with the world's fastest USB thermocouple power sensors. The Agilent U8480 Series USB thermocouple power sensors come with a measurement speed of 400 readings/second and power linearity of less than 0.8%, providing high accuracy and stability to help you make average power measurements quickly and confidently. With the U8480 Series USB sensors, one of the most cost-effective solutions in Agilent's power meter and sensor portfolio, you get top performance features at costs so affordable that every engineer can carry one in their bags.

Frequency range down to DC

Cover a broad range of test applications with Agilent's first power sensor with the capability to measure down to DC. The U8480 Series comes with two models: U8481A (10 MHz to 18 GHz) and U8485A (10 MHz to 33 GHz) with Option 200 versions of each USB sensor available, expanding the frequency range from 10 MHz down to DC.

Built-in trigger in function

Synchronize your measurement capture with the built-in trigger in function, without the need of an external module. The trigger-in function allows you to connect an external trigger signal from a signal source or the device-under-test directly to the USB sensor through a standard BNC to SMB cable.



The external trigger input port on the U8481A.

Internal calibration

Save time and reduce measurement uncertainty with the internal calibration function. These sensors come with technology that integrates a DC reference source and switching circuits into the body of the sensor so you can calibrate the sensor while it is connected to a device-under-test. This feature removes the need for connection and disconnection from an external calibration source, speeding up testing and reducing connector wear and tear. To perform zeroing, simply turn off the device-under-test.

Legacy excellence in a compact and portable form factor

The U8480 Series is based on the same front end design as the Agilent 8480 and N8480 Series power sensors, now equipped with USB capabilities and improved specifications such as a measurement speed ten times faster than the legacy series.



The U8480 Series fits easily in your bag, making the sensors ideal solutions for field applications such as base station testing.

The U8480 Series plugs directly into your PC or USB-enabled Agilent instrument and gives you the capability to measure power without needing an external power meter or power supply. The sensors draw power directly from a USB port and do not need additional triggering modules to operate. Begin measuring immediately when you connect the new USB power sensors to your PC or laptop; the U8480 Series sensors come bundled with the N1918A Power Panel software at no additional cost. The N1918A-100 Power Analyzer, with advanced features such as limit test and long term data logging, is available for purchase separately.

Performance specifications

Specification definitions

There are two types of product specifications:

- Warranted specifications are specifications which are covered by the product warranty and apply over a range of 0 to 55 °C unless otherwise noted. Warranted specifications include measurement uncertainty calculated with a 95 % confidence
- Characteristic specifications are specifications that are not warranted. They describe product performance that is useful in the application of the product. These characteristic specifications are shown in *italics*.

Characteristic information is representative of the product. In many cases, it may also be supplemental to a warranted specification. Characteristics specifications are not verified on all units. There are several types of characteristic specifications. They can be divided into two groups:

One group of characteristic types describes 'attributes' common to all products of a given model or option. Examples of characteristics that describe 'attributes' are the product weight and '50-ohm input Type-N connector'. In these examples, product weight is an 'approximate' value and a 50-ohm input is 'nominal'. These two terms are most widely used when describing a product's 'attributes'.

The second group describes 'statistically' the aggregate performance of the population of products. These characteristics describe the expected behavior of the population of products. They do not guarantee the performance of any individual product. No measurement uncertainty value is accounted for in the specification. These specifications are referred to as 'typical'.

Conditions

The power sensor will meet its specifications when:

- stored for a minimum of two hours at a stable temperature within the operating temperature range, and turned on for at least 30 minutes
- the power sensor is within its recommended calibration period, and
- used in accordance to the information provided in the User's Guide.

U8480 Series USB Power Sensors Specifications

Key specifications		
Frequency range	U8481A Option 100	10 MHz to 18 GHz
	U8481A Option 200	DC to 18 GHz
	U8485A Option 100	10 MHz to 33 GHz
	U8485A Option 200	DC to 33 GHz
Dynamic power range (average power)	–35 dBm to 20 dBm	
Power linearity ¹	–1 to 15 dBm	±0.50% (25 °C ± 10 °C)
		±0.55% (0 to 55 °C)
	15 to 20 dBm	±0.75% (25 °C ± 10 °C)
		±0.80% (0 to 55 °C)
Zero set (20% to 70% RH) ²	±25 nW ³	
Internal calibration accuracy ⁴	±0.52% (25 ± 10 °C)	
	±0.59% (0 to 55 °C)	
Zeroing duration	16 s	
Internal calibration duration	1.5 s	
External calibration duration	15 s	
Damage level	AC coupled (option 100)	25 dBm (average power), 50 V (DC) 15 W (2 µs duration) (peak power)
	DC coupled (option 200)	25 dBm (average power), 4 V (DC) 15 W (2 µs duration) (peak power)

1. After zeroing and calibration at ambient environment conditions. Refer to “Power linearity” on page 5 for more details.
2. RH is the abbreviation for relative humidity.
3. Tested at 50 MHz.
4. The U8480 Series is equipped with an internal calibration capability, which means that it does not require a 1 mW power reference for calibration. This specification applies for the 50 MHz frequency and at least 3 hours of settling time with internal calibration.

Power linearity

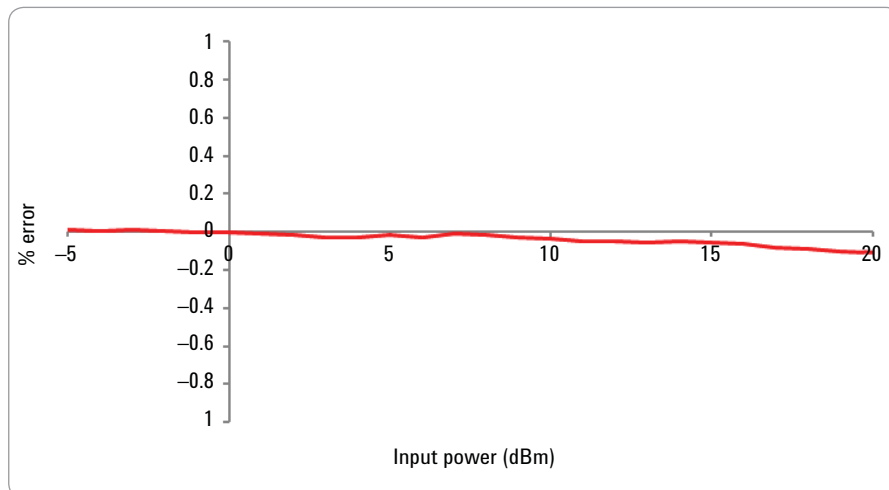


Figure 1. Typical U8480 Series power linearity at 25 °C, after zeroing and calibration with associated measurement uncertainty

Measurement Uncertainty

U8480 Series	-1 to 20 dBm
Measurement uncertainty (%)	±0.24

Maximum SWR

Frequency band	U8481A		Frequency band	U8485A	
	25 °C ± 10 °C	0 °C to 55 °C		25 °C ± 10 °C	0 °C to 55 °C
DC to 10 MHz ¹	1.11	1.14	DC to 10 MHz ¹	1.07	1.07
10 MHz to 30 MHz	1.37	1.57	10 MHz to 50 MHz	1.33	1.53
30 MHz to 50 MHz	1.14	1.16	50 MHz to 100 MHz	1.08	1.11
50 MHz to 2 GHz	1.08	1.11	100 MHz to 2 GHz	1.05	1.07
2 GHz to 12.4 GHz	1.16	1.16	2 GHz to 12.4 GHz	1.14	1.14
12.4 GHz to 18 GHz	1.23	1.25	12.4 GHz to 18 GHz	1.19	1.20
—	—	—	18 GHz to 26.5 GHz	1.26	1.28
—	—	—	26.5 GHz to 33 GHz	1.37	1.45

1. Only applicable for the U8480 Series Option 200 models.

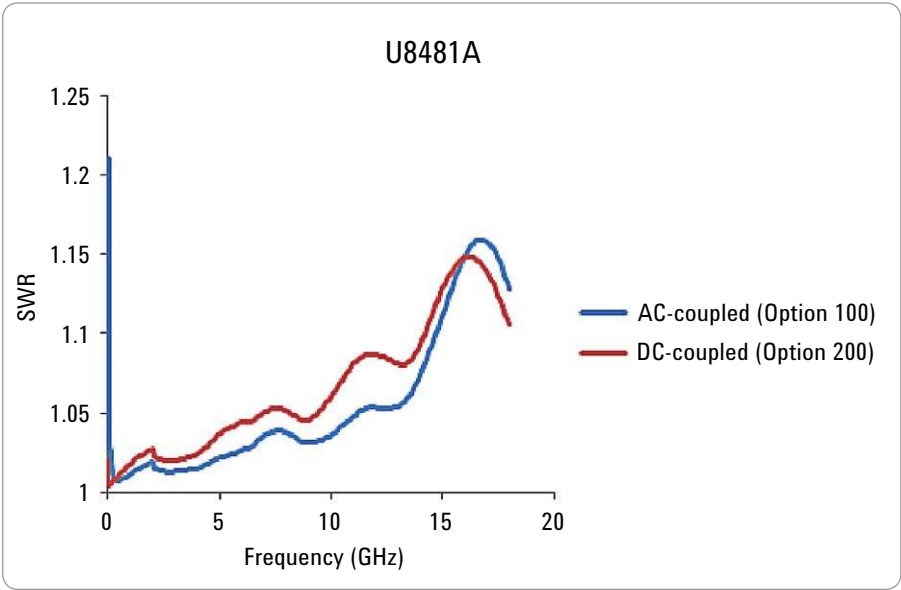


Figure 2. Typical SWR for the AC-coupled U8481A (Option 100) and the DC-coupled U8481A (Option 200)

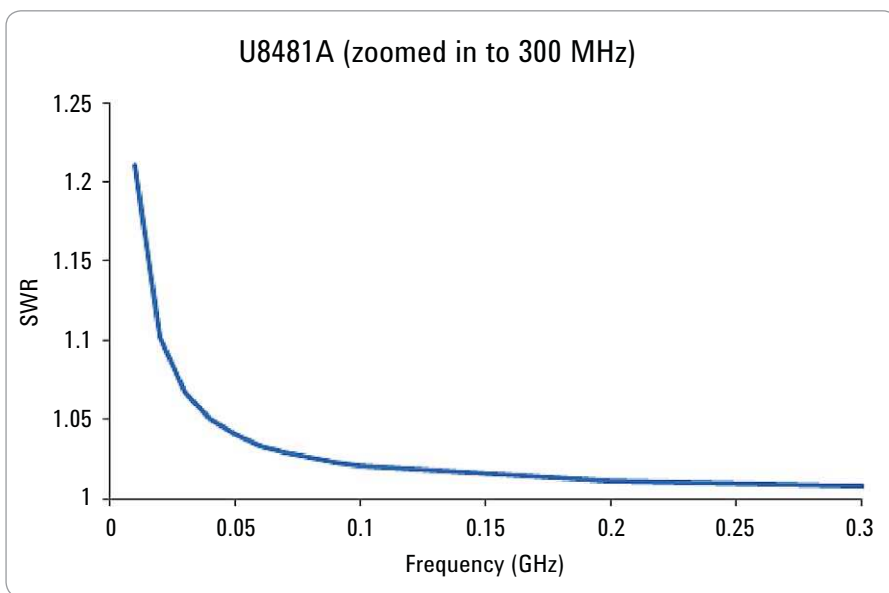


Figure 3. Typical SWR for the AC-coupled U8481A (Option 100) when zoomed in to 300 MHz

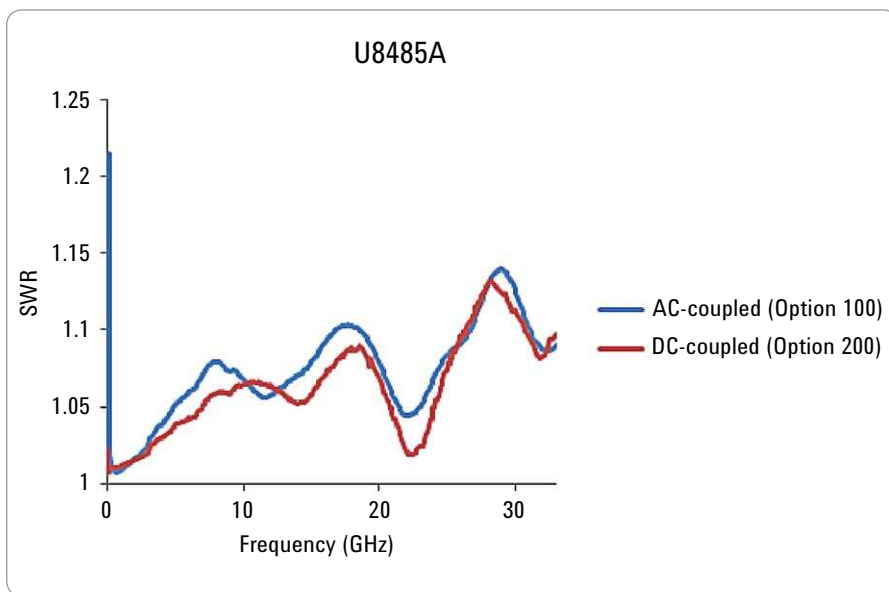


Figure 4. Typical SWR for the AC-coupled U8485A (Option 100) and the DC-coupled U8485A (Option 200)

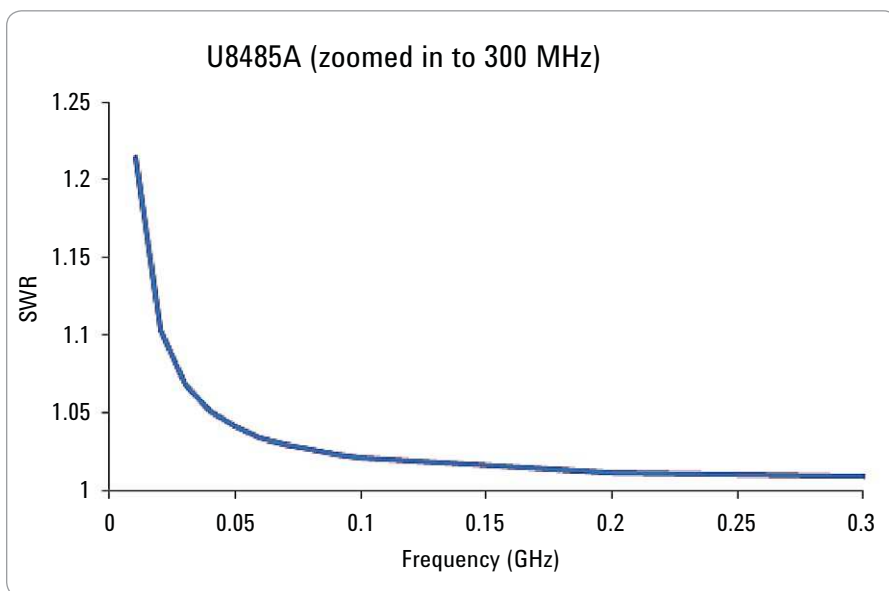


Figure 5. Typical SWR for the AC-coupled U8485A (Option 100) when zoomed in to 300 MHz

Zero drift and measurement noise

Conditions (RH) ¹	Zero drift ^{2, 3}	Measurement noise ^{2, 4}
20% to 70%	±5.5 nW	±45 nW

1. RH is the abbreviation for relative humidity.
2. Zero drift and measurement noise specifications are tested at 50 MHz.
3. Within 1 hour of warm up and after zeroing, at a constant temperature, taken over a period of 4 hours of the total measurement time. This drift is calculated based on the average of hourly drifts.
4. The number of averages at 16 for the normal mode, 32 for the ×2 mode, and 512 for the fast mode, at a constant temperature, measured over a 1-minute interval and two standard deviations.

Noise multiplier

Number of averages	1	2	4	8	16	32	64	128	256	512	1024
Normal mode	3.17	2.62	2.02	1.54	1.00	0.82	0.60	0.50	0.37	0.27	0.15
×2 mode	4.55	3.76	3.00	2.25	1.59	1.00	0.85	0.63	0.47	0.42	0.23
Fast mode	46.88	33.06	24.00	17.19	12.24	8.39	4.93	4.11	2.48	1.00	0.83

Measurement rate

Measurement speed mode	Measurement speed
Normal	20 readings/s
Double	40 readings/s
Fast ¹	400 readings/s ²

1. To reduce sensor-dependent delay time, use the measurement buffer by setting the trigger count >1.
2. The measurement is taken with the averaging state set to off.

Settling time

Number of averages	1	2	4	8	16	32	64	128	256	512	1024
Settling time(s) (Normal mode) ¹	0.15	0.23	0.32	0.53	0.90	1.68	3.24	6.44	12.7	25.3	50.5
Settling time(s) (x2 mode) ¹	0.14	0.16	0.23	0.33	0.51	0.91	1.70	3.28	6.45	12.7	25.3
Settling time(s) (Fast mode) ¹	0.003	0.005	0.009	0.018	0.036	0.069	0.134	0.265	0.528	1.05	2.10

1. Manual filter, 10 dB decreasing power step.

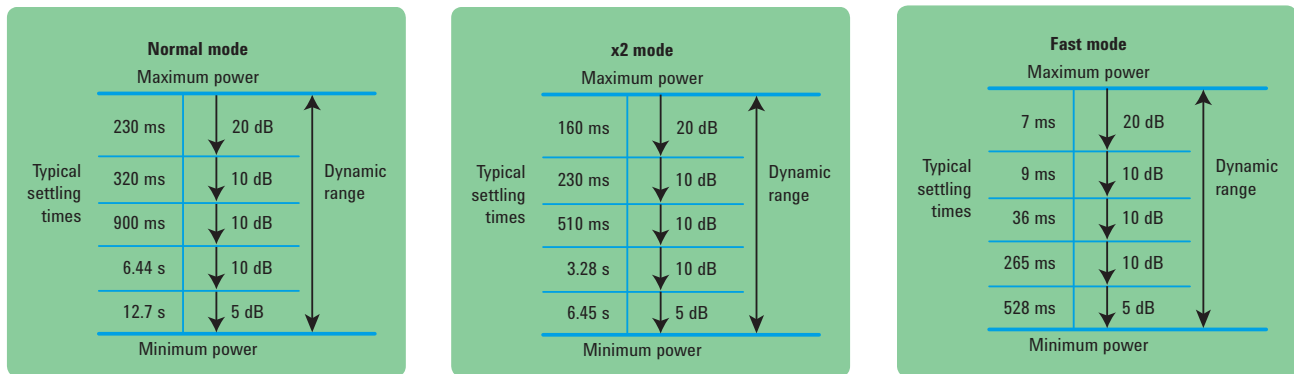


Figure 6. Auto-filter, default resolution, 10 dB decreasing power step

Calibration factor (CF) uncertainty

The typical measurement uncertainties listed are not to be taken as the maximum CF measurement uncertainties.

Note: The CF uncertainty is dependent on the calibration standard's uncertainty provided by Calibration Labs. For the exact uncertainty, refer to the individual sensor calibration report.

Frequency band	25 °C ± 3 °C		25 °C ± 10 °C		0 °C to 55 °C	
	U8481A	U8485A	U8481A	U8485A	U8481A	U8485A
DC to 10 MHz ¹	1.05%	1.50%	1.47%	1.49%	4.46%	2.04%
10 MHz to 30 MHz	1.05%	1.50%	1.47%	1.49%	4.46%	2.04%
30 MHz to 500 MHz	0.85%	1.37%	1.03%	1.46%	1.57%	1.98%
500 MHz to 1.2 GHz	0.78%	1.26%	0.97%	1.52%	1.65%	2.07%
1.2 GHz to 6 GHz	0.91%	1.35%	1.23%	1.68%	2.04%	2.40%
6 GHz to 14 GHz	1.26%	1.66%	1.85%	2.26%	2.62%	2.99%
14 GHz to 18 GHz	1.59%	1.83%	2.17%	2.47%	3.27%	3.35%
18 GHz to 26.5 GHz	—	2.67%	—	3.75%	—	4.70%
26.5 GHz to 33 GHz	—	3.32%	—	4.79%	—	6.41%

1. Only applicable for the U8480 Series Option 200 models.

External trigger

External TTL trigger input	
High	>1.9 V
Low	<1.1 V
Latency ¹	11 μs ± 2 μs
Minimum trigger pulse width	35 ns
Minimum trigger repetition period	80 ns
Impedance	50 Ω or 1 MΩ
Trigger delay	
Range	0 s to 1 s
Resolution	10 μs

1. External trigger latency is defined as the delay between the applied trigger crossing the trigger level and the U8480 Series switching into the triggered state.

General specifications

Acquisition		
Analog-to-digital converter (ADC) sampling rate	192 kHz	
ADC resolution	24 bits	
Integration time ¹	2.048 ms	
Other		
Current requirement	400 mA (approximately)	
Connector	U8481A	N-Type (m), 50 Ω
	U8485A	3.5 mm (m), 50 Ω
Cable	USB 2.0 Type A to 5-pin Mini-B	
Interface	USB 2.0 interface, USB-TMC compliant	
Programmability	SCPI, Agilent VEE, LabVIEW®, Microsoft® Visual Basic	
Calibration	1 year	

1. Integration time is the period during which the U8480 Series ADC samples the input signal for a measurement.

Typical plot

The following typical plot is intended to provide additional information, useful in applying the U8480 Series by giving typical but not warranted performance parameters.

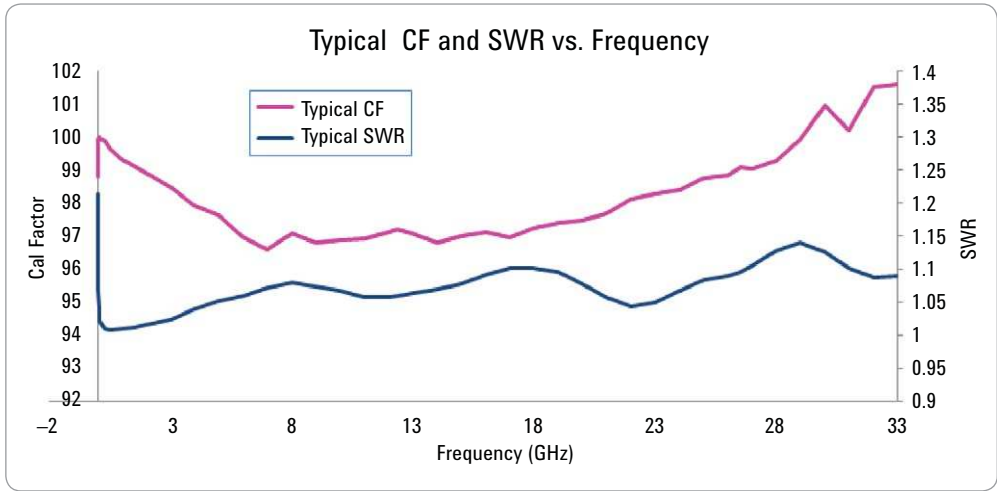


Figure 7. Typical calibration factor (CF) and SWR vs. frequency for the U8485A

General Characteristics

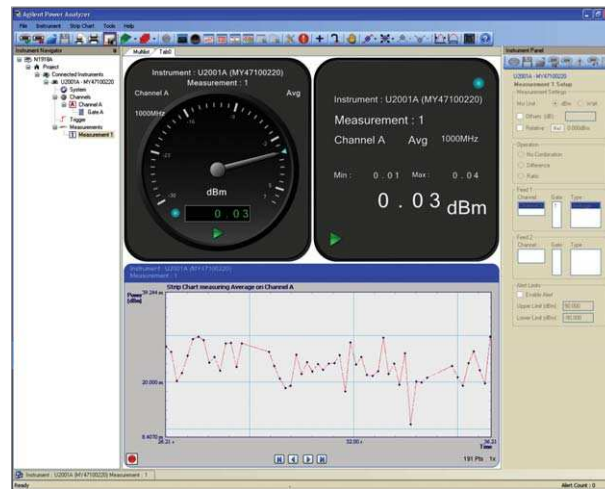
Environmental compliance	
Temperature	Operating condition: 0 °C to 55 °C
	Storage condition: -40 °C to 71 °C
Humidity	Maximum Operating condition: 95% RH at 40 °C (non-condensing) Minimum Operating condition: 15% RH at 25 °C (non-condensing) Storage condition: Up to 90% RH at 65 °C (non-condensing)
Altitude	Operating and storage conditions: Up to 4.6 km (15000 ft)
Regulatory compliance	
The U8480 Series USB thermocouple power sensor complies with the following EMC requirements:	IEC 61326-1:2005 / EN 61326-1:2006 Canada: ICES/NMB-001: Issue 4, June 2006 Australia/New Zealand: AS/NZS CISPR11:2004
(Length × Width × Height)	U8481A: 145 mm × 46 mm × 35.90 mm U8485A: 136.50 mm × 46 mm × 35.90 mm
Weight	
Net weight:	U8481A: 0.256 kg U8485A: 0.25 kg
Shipping weight:	U8481A: 1.35 kg U8485A: 1.402 kg
Connectivity	
USB 2.0, with the following cable lengths:	Option 301: 1.5 m Option 302: 3 m Option 303: 5 m
Recommended calibration interval	1 year
Pollution	Degree 2
Warranty	1 year

Using the U8480 Series with the N1918A Power Analysis Manager

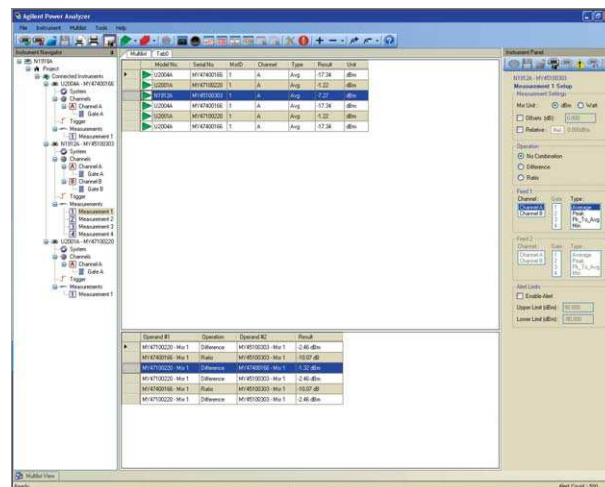
N1918A Power Analysis Manager is a powerful application software that complements the U8480 Series, U2020 X-series and U2000 series USB power sensors, offering easy monitoring and analysis on a PC display.

There are two versions of the N1918A software: the basic Power Panel and the advanced Power Analyzer. Power Analyzer provides full access to the software's complete features and capabilities and its licenses, N1918A-100 (PC license) and N1918A-200 (USB dongle license), are available for purchase separately.

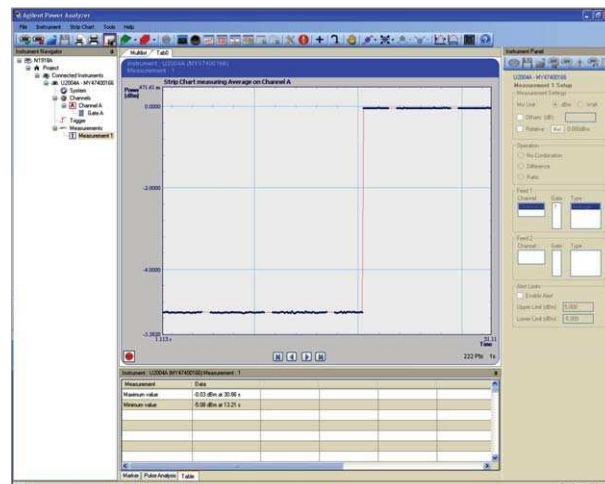
The U8481A and U8485A each come with the N1918A Power Panel software at no additional cost. A N1918A Power Analysis Manager software CD will be shipped together with the USB power sensor. Users can also download the software from www.agilent.com/find/N1918A.



Multiple display types



Data recording with limit and alert settings



Multiple channel list and measurement math

N1918A Power Analysis Manager functions

	Power panel (basic)	Power analyzer (advanced)
Measurement display		
Compact mode display	√	√
Soft panel (digital) display	√	√ (enhanced with limits and alerts notifications)
Gauge (analog) display	√	√ (enhanced with limits and alerts notifications)
Strip chart display	√	√
Multiple tabs	—	√
Multiple display per tab	√	√
Multilist	√	√
Graph functions		
Single marker	√ (up to 2 markers per graph)	√ (up to 10 markers per graph)
Dual marker	√ (one set of markers per graph)	√ (up to 5 sets of markers per graph)
Graph autoscaling	√	√
Graph zooming	√	√
Measurement math (delta, ratio)	√	√
Save/Load file functions		
Save measurement data (with timestamp)	√ (applies to strip chart display; up to 10,000 data points)	√ (applicable in Strip Chart and Trace Graph)
Load measurement data	√ (application in Strip Chart and Trace Graph)	√ (applicable in Strip Chart and Trace Graph)
Data recording (with timestamp)	—	√ (applicable in Trace Graph ¹ , Soft Panel, Strip Chart and Gauge)
Instrument settings options		
Save and restore instrument setting	√	√
Time-gated measurements	√	√
Instrument preset settings	√	√
FDO table parameters	√	√
Measurement limit and alert functions		
Limit and alert notification	—	√
Alert summary	—	√
Support function		
Print application screen	√	√

1. Recording time for trace graphs may vary based on trace graph settings

N1918A attributes

Other software attributes	
Display units:	Absolute: Watts or dBm Relative: Percent or dB
Display resolution:	Resolution of 1.0, 0.1, 0.01 and 0.001 dB in log mode; one to four digits in linear mode
Default resolution:	0.01 dB in log mode; three digits in linear mode
Zero:	For performing internal and external zeroing
Range:	Sensor-dependent, configurable in 1-kHz steps
Relative:	Displays all successive measurements relative to the last referenced value
Offset:	Allows power measurements to be offset by –100 dB to +100 dB, configurable in 0.001 dB increments, to compensate for external loss or gain
Duty cycle:	Duty cycle values between 0.001% to 99.999% can be entered in increments of 0.01% to display a pulse power representation of measured power. The following equation is used to calculate the displayed pulse power value: $\text{Pulse Power} = \text{Measured Power} / \text{Duty Cycle}$
Limits:	High and low limits can be set in the range between –150.00 dBm to +230.00 dBm, in 0.001 dBm increments.
Preset default values:	Channel Offset (dB) = 0, Duty Cycle Off, Frequency 50 MHz, AUTO Average, AUTO Range, Free Run Mode, dBm mode

System requirements

Hardware	
Processor	Desktop PC: 1.3 GHz Pentium IV or higher recommended Laptop PC: 900 MHz Pentium M or higher recommended
RAM	512 MB (1.0 GB or higher recommended)
Hard disk space	1.0 GB or more free disk space at runtime
Resolution	800 x 600 or higher (1280 x 1024 recommended)
Operating system and browser	
Operating system	<ul style="list-style-type: none"> • Windows® 7 32-bit and 64-bit • Windows Vista 32-bit and 64-bit • Windows XP Professional 32-bit Service Pack 2 or higher
Browser	Microsoft® Internet Explorer 5.1 (6.0 or higher recommended)
Others	Any of the following to be pre-installed: <ul style="list-style-type: none"> • GPIB IO interface card • LAN interface card • USB/GPIB interface connector
Software	
Agilent IO Libraries Suit	Version 15.5 ¹ or higher
Microsoft .NET Framework	Runtime version 3.5
Microsoft Visual C++® 2005 Runtime Libraries ²	Version 1.0 or higher

1. Available on the Agilent Automation-Ready CD-ROM. Agilent IO Libraries Suite 15.5 is required if your PC is running on Windows Vista 32-bit operating system

2. Bundled with N1918A Power Analysis Manager CD

Ordering Information

Model	Description
U8481A	USB thermocouple power sensor
U8481A-100	Standard option - 10 MHz to 18 GHz
U8481A-200	DC couple option - DC to 18 GHz
U8485A	USB thermocouple power sensor
U8485A-100	Standard option - 10 MHz to 33 GHz
U8485A-200	DC couple option - DC to 33 GHz
Standard Shipped Items	
	<ul style="list-style-type: none"> • Power sensor cable 5 ft (1.5 m), default cable length • Trigger cable, BNC male to SMB female, 50 Ω, 1.5 m • Certificate of calibration • Documentation CD-ROM • N1918A Power Analysis Manager software CD-ROM • Agilent IO Libraries Suite Software CD • 3.5 mm (f) to Type-N (m) adapter

Options

Travel kits	
U2000A-201	Transit case
U2000A-202	Soft carrying case
U2000A-203	Holster
U2000A-204	Soft carrying pouch
Cables (selectable during sensor purchase)	
U2000A-301	Power sensor cable, 5 ft (1.5 m)
U2000A-302	Power sensor cable, 10 ft (3 m)
U2000A-303	Power sensor cable, 16.4 ft (5 m)
Cables	
U2031A	Power sensor cable, 5 ft (1.5 m)
U2031B	Power sensor cable, 10 ft (3 m)
U2031C	Power sensor cable, 16.4 ft (5 m)
U2032A	BNC male to SMB female trigger cable, 50 Ω , 1.5 m

Options (continued)

Calibration	
U848xA-1A7	ISO17025 compliant calibration and test data
U848xA-A6J	ANZIZ540 compliant calibration and test data
N1918A Power Analysis Manager software	
N1918A-100	Power Analyzer (with PC license)
N1918A-200	Power Analyzer (with USB license)
Documentation	
U8481A/85A-ABJ	Japan - Japanese user guide; printed
U8481A/85A-0B1	English language user guide; printed
U8481A/85A-ABZ	Italy - Italian language user guide; printed
U8481A/85A-ABE	Spain - Spanish user guide; printed
U8481A/85A-ABD	Germany - German user guide; printed
U8481A/85A-AB2	China - Simplified Chinese user guide; printed
U8481A/85A-ABF	France - French language user guide; printed
U8481A/85A-0BF	English language programming guide; printed
U8481A/85A-0BN	English language service guide; printed

www.agilent.com

www.agilent.com/find/usbthermosensor



myAgilent

www.agilent.com/find/myagilent

A personalized view into the information most relevant to you.



www.axistandard.org

AdvancedTCA® Extensions for Instrumentation and Test (AXIe) is an open standard that extends the AdvancedTCA for general purpose and semiconductor test. Agilent is a founding member of the AXIe consortium.



www.lxistandard.org

LAN eXtensions for Instruments puts the power of Ethernet and the Web inside your test systems. Agilent is a founding member of the LXI consortium.



www.pxisa.org

PCI eXtensions for Instrumentation (PXI) modular instrumentation delivers a rugged, PC-based high-performance measurement and automation system.

Agilent Channel Partners

www.agilent.com/find/channelpartners

Get the best of both worlds: Agilent's measurement expertise and product breadth, combined with channel partner convenience.

Windows is a registered trademark of Microsoft Corporation in the United States and other countries.

Microsoft is a trademark or registered trademark of Microsoft Corporation in the United States and/or other countries.

Visual C++ is a trademark or registered trademark of Microsoft Corporation in the United States and/or other countries.



Agilent Advantage Services is committed to your success throughout your equipment's lifetime. To keep you competitive, we continually invest in tools and processes that speed up calibration and repair and reduce your cost of ownership. You can also use Infoline Web Services to manage equipment and services more effectively. By sharing our measurement and service expertise, we help you create the products that change our world.

www.agilent.com/find/advantageservices



For more information on Agilent Technologies' products, applications or services, please contact your local Agilent office. The complete list is available at:

www.agilent.com/find/contactus

Americas

Canada	(877) 894 4414
Brazil	(11) 4197 3600
Mexico	01800 5064 800
United States	(800) 829 4444

Asia Pacific

Australia	1 800 629 485
China	800 810 0189
Hong Kong	800 938 693
India	1 800 112 929
Japan	0120 (421) 345
Korea	080 769 0800
Malaysia	1 800 888 848
Singapore	1 800 375 8100
Taiwan	0800 047 866
Other AP Countries	(65) 375 8100

Europe & Middle East

Belgium	32 (0) 2 404 93 40
Denmark	45 45 80 12 15
Finland	358 (0) 10 855 2100
France	0825 010 700*
*0.125 €/minute	
Germany	49 (0) 7031 464 6333
Ireland	1890 924 204
Israel	972-3-9288-504/544
Italy	39 02 92 60 8484
Netherlands	31 (0) 20 547 2111
Spain	34 (91) 631 3300
Sweden	0200-88 22 55
United Kingdom	44 (0) 118 927 6201

For other unlisted countries:

www.agilent.com/find/contactus

Revised: October 11, 2012

Product specifications and descriptions in this document subject to change without notice.

© Agilent Technologies, Inc. 2012
Published in USA, November 20, 2012
5991-1410EN



Agilent Technologies