



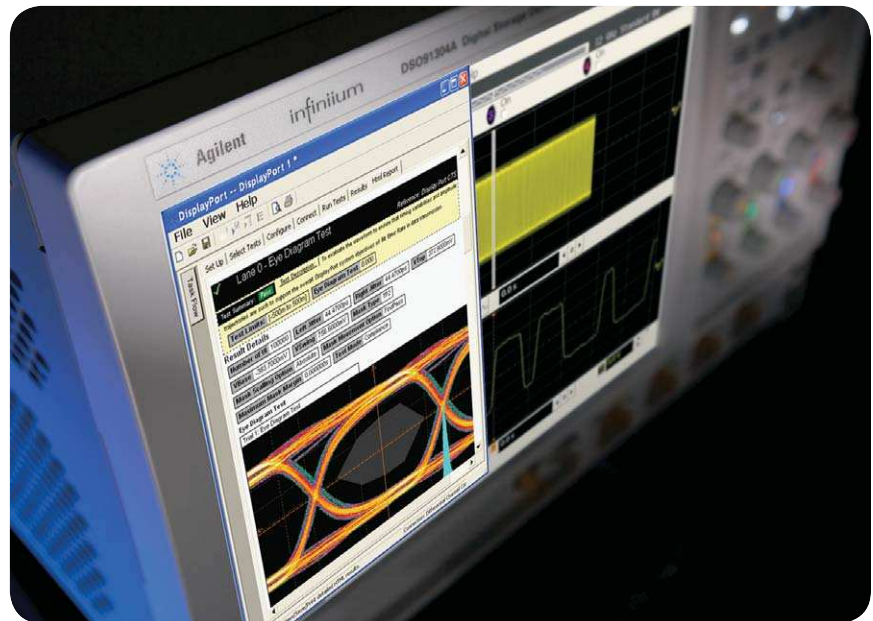
Agilent U7232B DisplayPort Electrical Performance Validation and Compliance Software for Infiniium Series Oscilloscopes

Data Sheet

Verify and debug your DisplayPort designs more easily

Agilent Technologies U7232B DisplayPort Electrical Performance Validation and Compliance software for Infiniium Series oscilloscopes (see Table 1) provides you with a fast and easy way to verify and debug your DisplayPort interface designs for sink and source ICs, motherboard systems, computers and graphics cards. The DisplayPort electrical test software is designed for use in DisplayPort Authorized Compliance Test Houses, so you can confidently use it to execute DisplayPort electrical checklist tests as well as employ it as a development tool. It displays the measurement data results in a flexible report format, and the report also provides a margin analysis that shows how closely your device passed or failed each test.

To make measurements with the U7232B DisplayPort Electrical Performance Validation and Compliance software, you will need a test point adapter (TPA) for signal access to the AUX Channel and hi-speed video lanes. While Agilent provides one for standard DisplayPort connections (W2641B), other units are available (see order information table on page 16).



The U7232B DisplayPort Electrical Performance Validation and Compliance software performs a wide range of tests required to meet the DisplayPort electrical specifications for various computer system components (sink and source ICs, motherboard systems, computers and graphics cards) as documented in section 3 of the base DisplayPort specification by VESA¹. To introduce a DisplayPort product to the market, your product must successfully pass compliance testing based on

the DisplayPort specification at an approved DisplayPort test center or through a self certification regimen defined by VESA in cooperation with your company. Either way, you will want to use the DisplayPort Electrical Performance Validation and Compliance software to troubleshoot, if necessary, and then to validate the design by performing the tests before the final compliance test run. The U7232B software makes it easier for you to prepare for passing the certification hurdle for DisplayPort CTS version 1.2b.

¹ Video Electronics Standards Association (www.vesa.org)



U7232B saves you time

Features

The U7232B HDMI electrical test software offers several features to simplify the validation of DisplayPort designs:

- Full Physical Layer Testing High speed Lanes and AUX channel
- Support of multiple CTS versions
- Test Status tracking
- Support of eDP 1.3
- Measurement process configurability
- Automated scope measurement setup
- Test results reports with pass/fail margin analysis
- Automation control through AUX Channel Controller

With the DisplayPort electrical test software, you can use the same oscilloscope you use for everyday debugging to perform automated testing and margin analysis based on the DisplayPort-specified test checklist.

U7232B saves you time

The U7232B DisplayPort Electrical Performance Validation and Compliance software saves you time by setting the stage for automatic execution of DisplayPort electrical tests. Part of the difficulty of performing electrical tests for DisplayPort is connecting the oscilloscope to the target device, configuring the instrument for measurements, executing the test procedures, defining the capabilities of the device under test, and then analyzing the measured results by comparing them to limits published in the specification. The DisplayPort electrical test software does almost all of this work for you. In addition, if you discover a problem with your device, debug tools are available to aid in root-cause analysis.

The U7232B DisplayPort software offers the electrical tests for the source as well as important tests for cable and calibration for receiver tolerance testing. The software automatically configures the oscilloscope for each test, and it provides an informative results report that includes margin analysis indicating how close your product is to passing or failing that specification. Clock recovery of each lane is accomplished according to the standard by the oscilloscope using proprietary software techniques. See Table 2 for a complete list of the measurements made by the DisplayPort electrical test software.

Easy test definition

The U7232B DisplayPort Electrical Performance Validation and Compliance software extends the ease-of-use advantages of Agilent's Infiniium Series oscilloscopes to testing DisplayPort designs. The Agilent automated test engine walks you quickly through the steps required to define the device under test, to select the tests, set up the tests, perform the tests, and view the test results. You can pick high-level test parameters to suit your test process objectives, and then you can proceed to select a category of tests all at once, or specify individual tests. The user interface is oriented to minimize reconnections, which saves you time and minimizes potential for operator error. You can save tests and configurations as project files and recall them later for quick testing and review of previous test results. Straightforward menus let you perform tests with a minimum of mouse clicks.

Further test process control is also provided through the automation tab of graphical user interface. This tab allows the user to tailor scripts to control external equipment such as power supplies and temperature control units, or to provide a different test flow.

Test environment setup and test selection

The U7232B DisplayPort Electrical Performance Validation and Compliance software now allows you to define the DUT capability and select test environment variables to better suit your testing goals for speed and cost. The setup process begins with the Setup entry screen (shown in Figure 1). This screen enables selection of the DisplayPort Compliance test specification (for instance 1.1a or 1.2b as shown in Figure 1) and test groupings for hi-speed video lane testing (Physical Layer Tests), AUX Channel and whole device characteristics (AUX PHY and Inrush Tests), or HDMI over the DisplayPort interface (DualMode tests). This screen will also let you choose between exposing just normative (mandatory) tests or all tests: normative and informative. The bottom portion of the environment setup tab is dedicated to automation through the AUX test mode. After making the appropriate selections for you testing, the setup continues with DUT characteristics entry and connection specifics when the Test Setup button is selected.

The test setup loop presents a series of screens that allow the user to enter the key test and environment information because there is a wide range of test connections and optional performance allowed for in the DisplayPort specification. Some of this test process information is briefly described below.

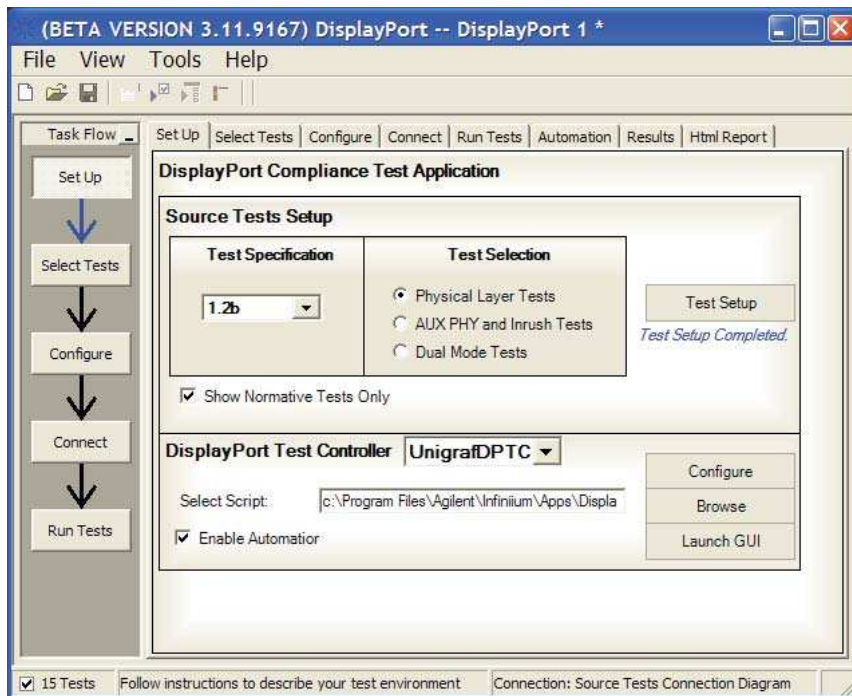


Figure 1: U7232B DisplayPort Test Environment Setup

- Device ID: enter the device name and other pertinent information
- Operator ID: For compliance test houses to identify the operator for QA process.
- Project ID: for compliance test houses that identify projects by number this enables the report to carry a key identification number to a contract.
- Device Type: allows you to select between cable test, sink test and source test suite. The most common selection is source testing.
- Test Type: define whether tests will be single ended or differential. See Figure 2.
- DUT Definition: select the capabilities of the DUT you wish to test. See Figure 3
- Test Fixture Selection: select the test fixture used. See Figure 4.
- Connection Type: Single-Ended vs. Differential connection: choose between using two channels of the scope to make a differential measurement using an 'A minus B' technique or by using differential probe on each scope channel for each lane, see Figure 4.
- Number of Channels: you may choose to test 1, 2, or 4 channel connection. (Note: Differential connection allows full lane selection, while Single-Ended can only support testing 1 or 2 lanes.). See Figure 4.
- Oscilloscope Connection: this screen allows you to assign oscilloscope channels and device lanes to test. See Figure 5.

Test environment setup and test selection (continued)

The first setup screen is shown in Figure 2 with the Start Project screen. This is where the project information and device specifics such as Test device, and Test Type are entered. The Test Type refers to whether the tests to be selected from a subsequent menu will be single ended tests only, differential tests only, or both single-ended and differential tests.

Figure 2: Start Project screen to enter standard test data and select Test Device Type and Test Type. Shown is Test Type = Both to support single-ended and differential tests.

Device Definition

Critical information to guide the test process will be the device capability information. This is information about the test device such as the valid levels, pre-emphasis settings, number of lanes, bit rates and whether spread spectrum clocking is enabled or not. These capabilities are identified in the DUT Definition screen in Figure 3.

DUT Definition Setting		
Lane Setting <input checked="" type="radio"/> 1 Lane <input type="radio"/> 2 Lanes <input type="radio"/> 4 Lanes	Bit Rate <input checked="" type="checkbox"/> 5.4 Gbps <input checked="" type="checkbox"/> 2.7 Gbps <input checked="" type="checkbox"/> 1.62 Gbps	Spread Spectrum Clocking <input checked="" type="radio"/> Disabled <input type="radio"/> Enabled <input type="radio"/> Both
Post Cursor2 <input checked="" type="checkbox"/> Level 0 <input type="checkbox"/> Level 1 <input type="checkbox"/> Level 2 <input type="checkbox"/> Level 3	Level <input checked="" type="checkbox"/> Swing 0 <input checked="" type="checkbox"/> Swing 1 <input checked="" type="checkbox"/> Swing 2 <input type="checkbox"/> Swing 3	Pre-emphasis <input checked="" type="checkbox"/> Pre-emphasis 0 <input checked="" type="checkbox"/> Pre-emphasis 1 <input checked="" type="checkbox"/> Pre-emphasis 2 <input type="checkbox"/> Pre-emphasis 3
HBR2 with Cable Preferred Setting Swing 2/ Pre-emphasis 1		HBR2 without Cable Preferred Setting Swing 0/ Pre-emphasis 1

Figure 3. U7232B DUT Definition Entry in Setup

Test Connection

Upon completion of the device definition, the Test Connection Setup screen is presented. This screen enables entry of parameters that affect the connection of the device to the oscilloscope. Specifically, the fixture, the type of connection and number of lanes connected. The fixture selection enables not only Agilent fixture (W2641), but any of the current fixtures provided by various fixture vendors as well. While the de-embed files are available for the Agilent W2641 fixture, the other fixtures will have de-embed files as they are made available. The Connection Type relates to how the signal gets to the scope channel. If by differential probe, then a probe amplifier is assumed (1169A, or 2800A) and the operator will then have the choice of using 1,2 or 4 channels of test (depending on whether the appropriate number of lanes has been selected). If the Connection Type is selected is single-ended then each differential lane of the test device will have two connections to the scope. By default these are routed to channels 1 and 3, or 2 and 4. This means only two maximum lanes may be tested this way at a time. Note: if the Test Type selection in the Start Project screen was 'Both' or 'Single-Ended', then the Connection Type will default to 'Single ended' and will be grayed out. The number of channels allowed will always be aware of the upstream selections so will limit the number of channels based those inputs.

The final screen in the Test Setup loop is the Channel Assignment Setup. It will portray the connection expected in number of channels and type of connection requested. It is editable and if there are channel assignment conflicts, the user is alerted to the fact.

The screenshot shows the 'Test Connection Setup' dialog box with three main sections:

- Fixture Type:** A dropdown menu is set to 'Agilent W2641A'. Below it is a checked checkbox for 'De-Embed Fixture'.
- Connection Type:** Two radio buttons are present: 'Differential Probe' (unselected) and 'Single-Ended (A-B)' (selected).
- No of Channels:** A dropdown menu is set to '2 Channels'.

Each section has a corresponding 'Description' box on the right with scrollable text:

- Fixture Type Description:** 'Fixture Type: DisplayPort Fixture Setup. Please select the Fixture Type according'.
- Connection Type Description:** 'Connection Type: There are two Differential connection models that are supported:'.
- No of Channels Description:** 'Number of Scope Channels: Setting of number of scope channels needed by Probe(s) or SMA cable(s) used on test.'

At the bottom of the dialog are three buttons: '<< Back', 'Next >>', and 'Close'.

Figure 4: U7232B Test Connection Setup Screen

Test Selection

After defining the test environment through the test setup loop, you are presented with only those tests that are appropriate for the environment chosen. For instance, if spread spectrum clocking (SSC) is not enabled, then no SSC tests will appear. This is the case for the optional settings of pre-emphasis and levels as well. If your device definition is one lane only, or your defined device connection is one lane (one differential probe or two single-ended connections) then no inter-pair skew tests will appear in the test suite. This dynamic filtering simplifies your job by ensuring you attempt to test only what is possible for the DUT and the connection model you have chosen.

The DP 1.2b test suite is shown in the Test Selection screen is shown in Figure 6. It is partitioned in groups of tests as a function of the pattern that is required to test. HBR (2.7 Gb/s) and RBR (1.62 Gb/s) bit rates require PRBS7 and D10.2 patterns while HBR2 (5.4Gb/s) require special patterns such as the HBR2 compliance test pattern that has a repetition length of 2520 bits (referred to as 'CP2520' or 'HBR2CPAT'). Tests may be selected independently and any number of tests may be selected for a given run. If more than one lane is possible to run (as determined by the selections in Setup) then test selection by lane is also possible. If different connections or conditions of test are required from one test to another, a splash screen is presented to the user indicating the required change. When automation mode is used with the AUX Channel Controller, the device is changed automatically and there is no need for the splash screens

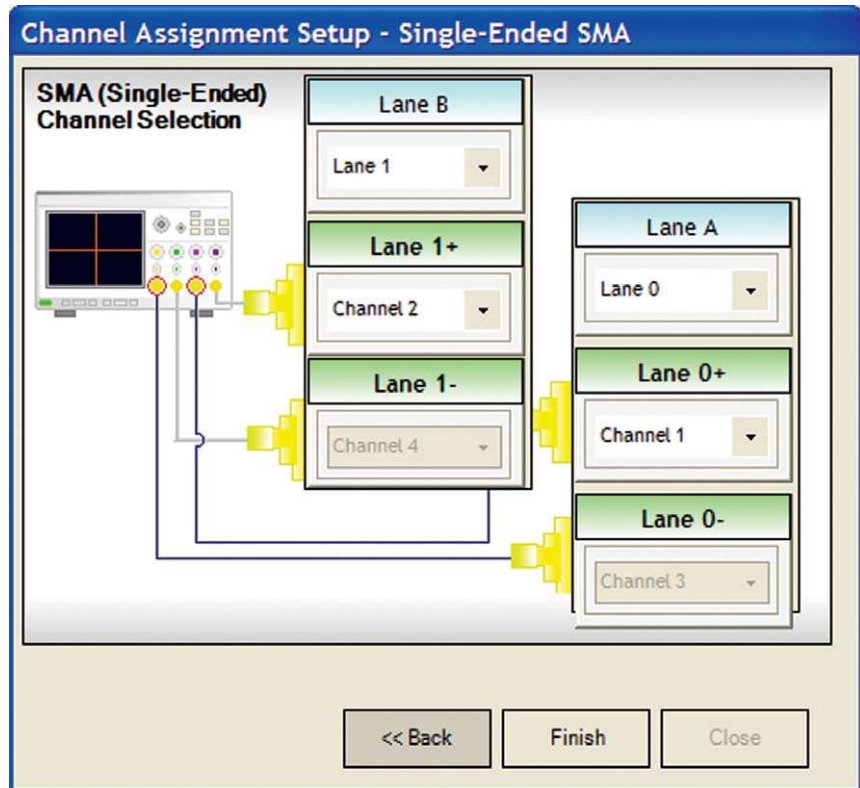


Figure 5: Channel Assignment Setup: Lane and oscilloscope assignment: 2 Lane Single-ended Connection using all four scope channels.

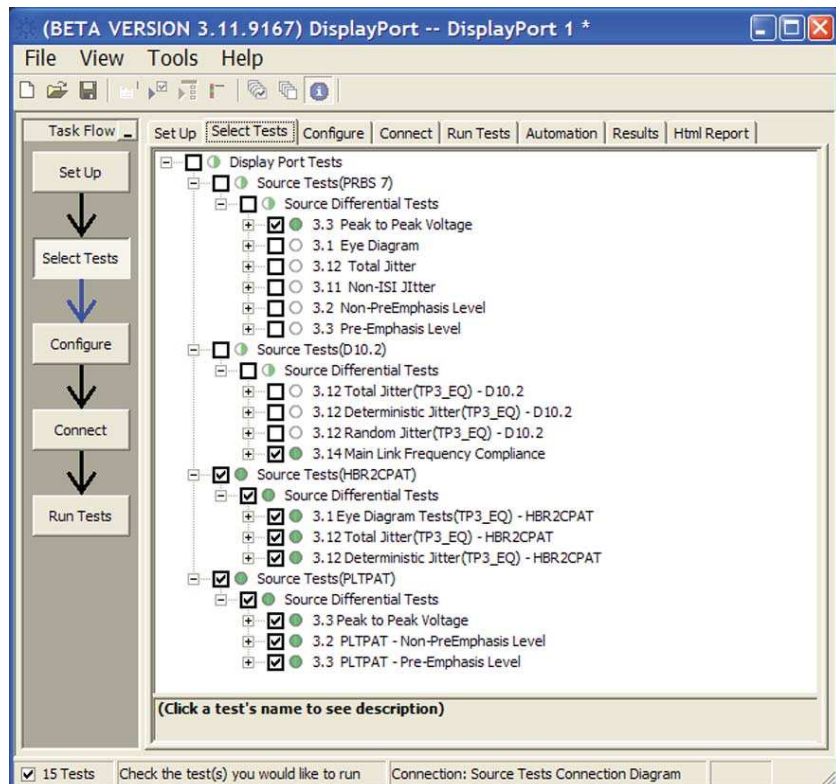


Figure 6. Lists the tests that are selectable and their status. Status bubbles indicate successful completion, failure, or incompleteness.

Configurability and Guided Connections

Configurability and Guided Connections

The U7232B DisplayPort Electrical Performance Validation and Compliance software provides flexibility in your test setup. It guides you to make connection changes with hookup diagrams when the tests you select require it. For test parameters such as bandwidth reduction or data channel selection, you can select appropriate values. For more critical parameters, such as mask scaling option or number of edges for analysis, default values are tied to the compliance standard; these values can only be altered in the debug screen. In Figure 7 you can see the selection for various U7232B eye mask test functions. The default for compliance mode is “Fixed” which places the mask in the center of the eye per the DisplayPort Compliance test specification (shown is ‘Find Margin,’ which will find the range of passing conditions).

Note: For HBR2 the eye diagram testing is different from RBR and HBR and is considered worst case so the ‘Find Margin’ capability is not available.

After you configure the test to meet your needs, the U7232B user interface displays the connection screen, which is specific to the configuration data you have selected. Figure 8 illustrates the typical connection guidance provided for a one channel “A minus B” connection model for a one lane test setup.

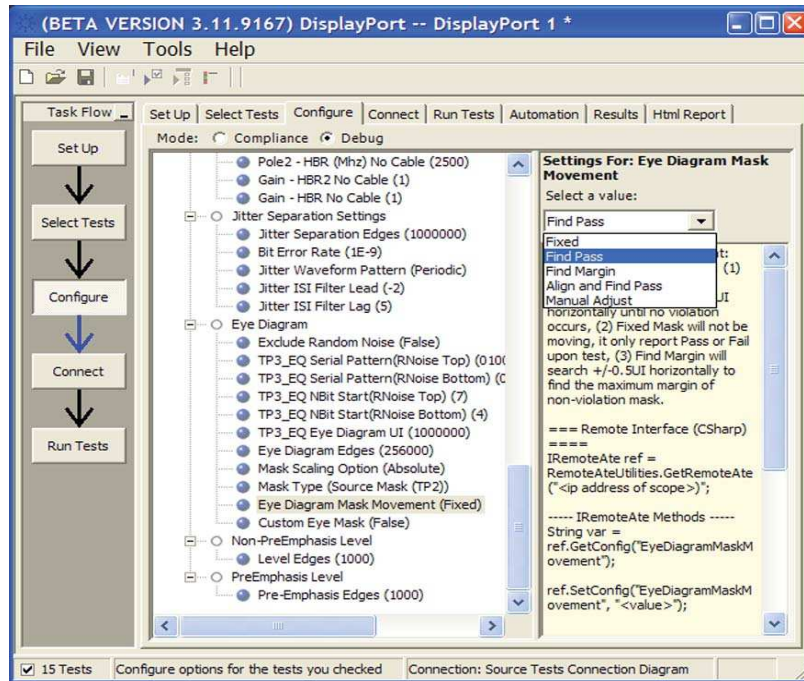


Figure 7. The U7232B Configure Tab enables changing measurement parameters in the 'Debug' mode to support characterization and debug activities.

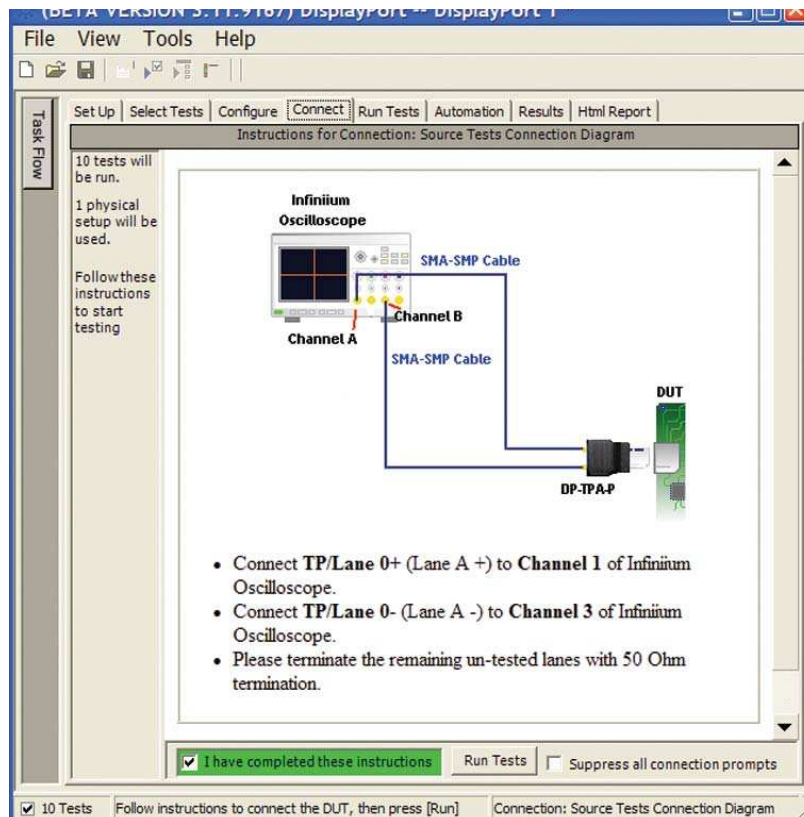


Figure 8. The final step before test is to illustrate the anticipated connection for the test.

Margin analysis

In addition to providing you with measurement results, the U7232B DisplayPort Electrical Performance Validation and Compliance software provides a report format that shows you not only where your product passes or fails, but also reports how close you are to the limits specified for a particular test assertion. You select the margin test report parameter, which means you can specify the level at which warnings are issued to alert you to the electrical tests where your product is operating close to the official test limit defined by the DisplayPort compliance test specification for a given test assertion.

Eye margin: Another method of evaluating the eye is provided by sweeping the eye horizontally with the specified mask and determining the last locations on the left and right portions of the interior eye where there are no violations in the mask. The distance from the center mask location is a measure of design margin and is reported as eye margin if that eye mask mode is chosen in the configuration screen (Eye Diagram Mask Movement: Find Margin—see Figure 7 for example).

Margin is calculated:

Single-sided specification:

$$\text{Margin} = (\text{Value}_{\text{Specification}} - \text{Value}_{\text{actual}}) / \text{Value}_{\text{Specification}}$$

Double-sided specification:

$$\text{Margin} = \text{lowest of: } (\text{Value}_{\text{Specification_High}} - \text{Value}_{\text{actual}}) / \text{Range}_{\text{Specification}}$$

$$\text{and } (\text{Value}_{\text{Specification_Low}} - \text{Value}_{\text{actual}}) / \text{Range}_{\text{Specification}}$$

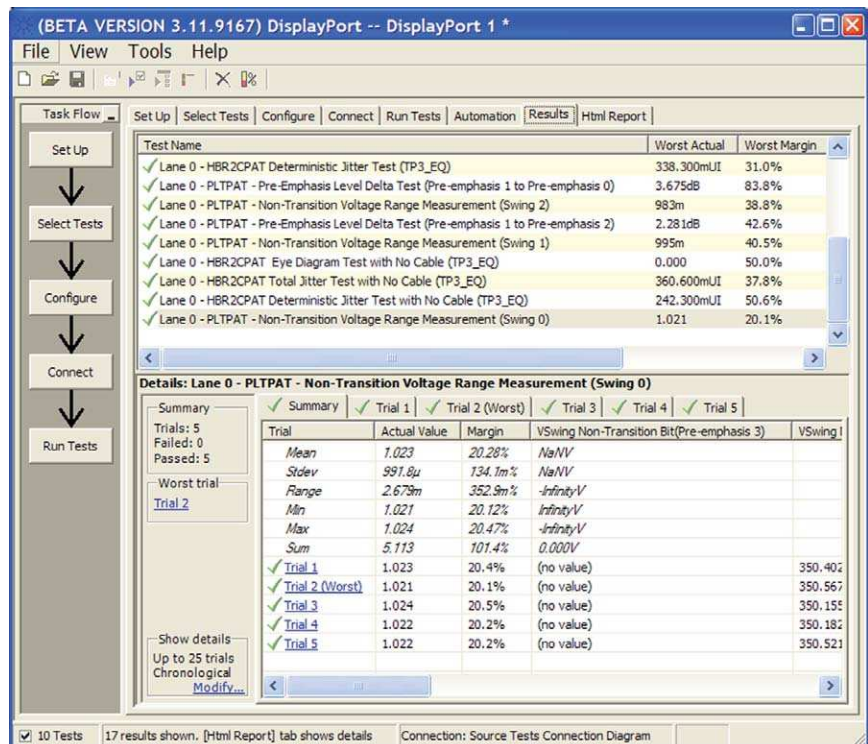


Figure 9. The DisplayPort electrical test software results report documents your test, indicates the pass/fail status, the test specification range, the measured values, and the margin.

Thorough performance reporting

The U7232B DisplayPort Electrical Performance Validation and Compliance software generates thorough reports that not only capture the performance and status of the device under test, but also the screen shots of your most significant measurements for your perusal and evaluation. The first page of the report lists equipment and configuration details required in standard quality assurance programs. It also provides a hot-linked results table that will quickly get you to the measurement report section of interest.

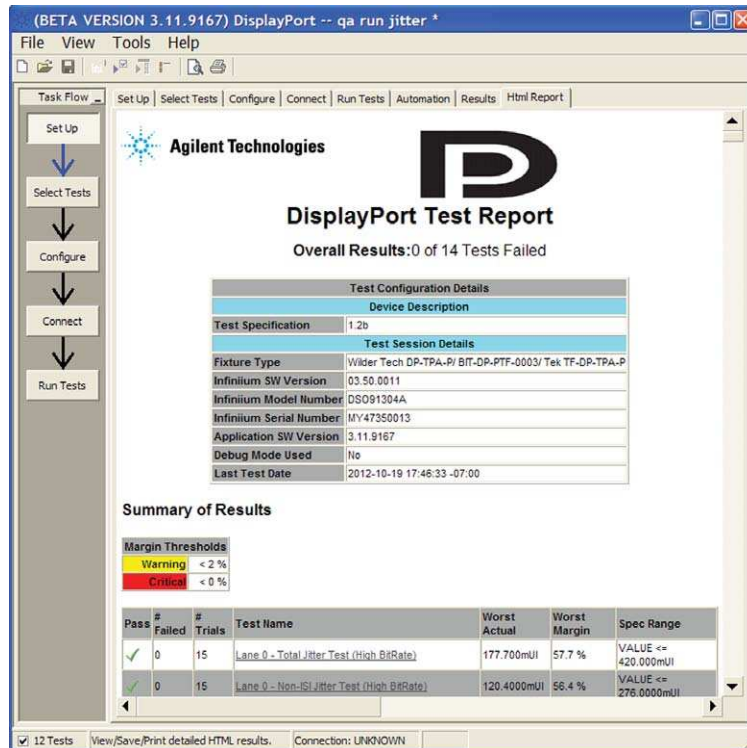


Figure 10. The U7232B software generates a summary report where you can see the total test results for your device quickly and clearly. Additional details are available for each test, including the test limits, test description, and test results, including waveforms, if appropriate. All are hot linked to more detailed results further in report. In addition, the margin of the result is indicated to provide further insight.

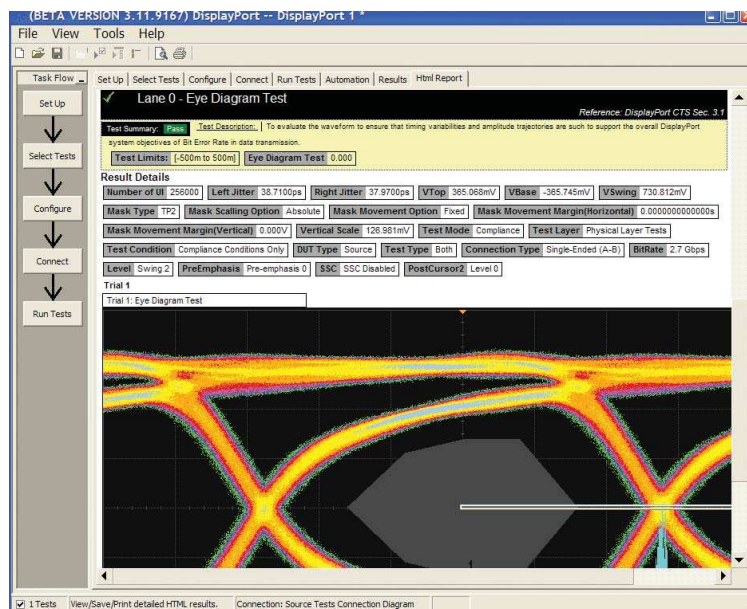


Figure 11. Summary report detail: The U7232B software's summary report provides screen shots of all the measurements that have been performed. In this figure you can see the data-eye. Observe the clear status and description at the top and the measurement data just above the eye.

Test Status Tracking

The U7232B software can keep track of the status in a test plan and is visually viewable in the Test Run menu (Figures 12 and 13). In addition, you can choose to resume testing the device and the software will continue where it stopped the time before.

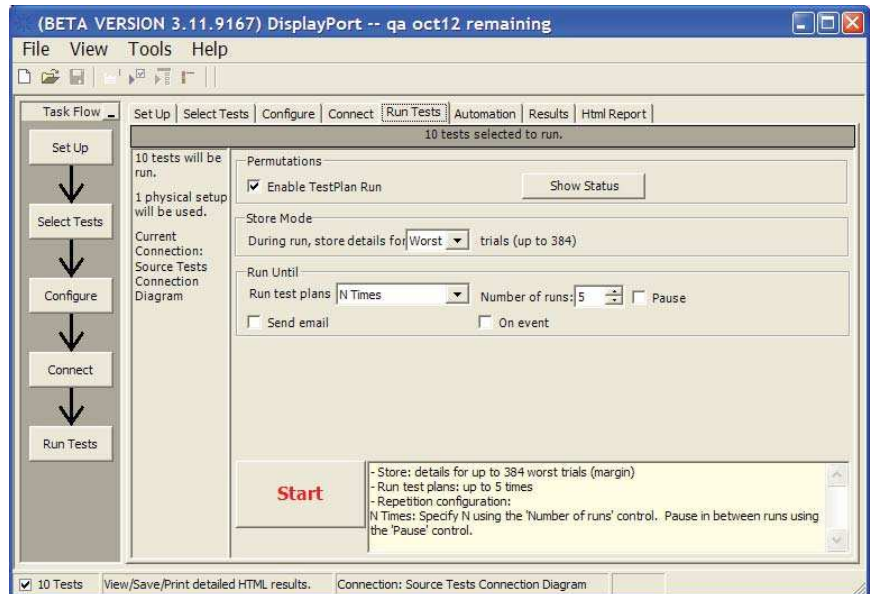


Figure 12: Show Test Status: Test Status selected in the Run Tests menu

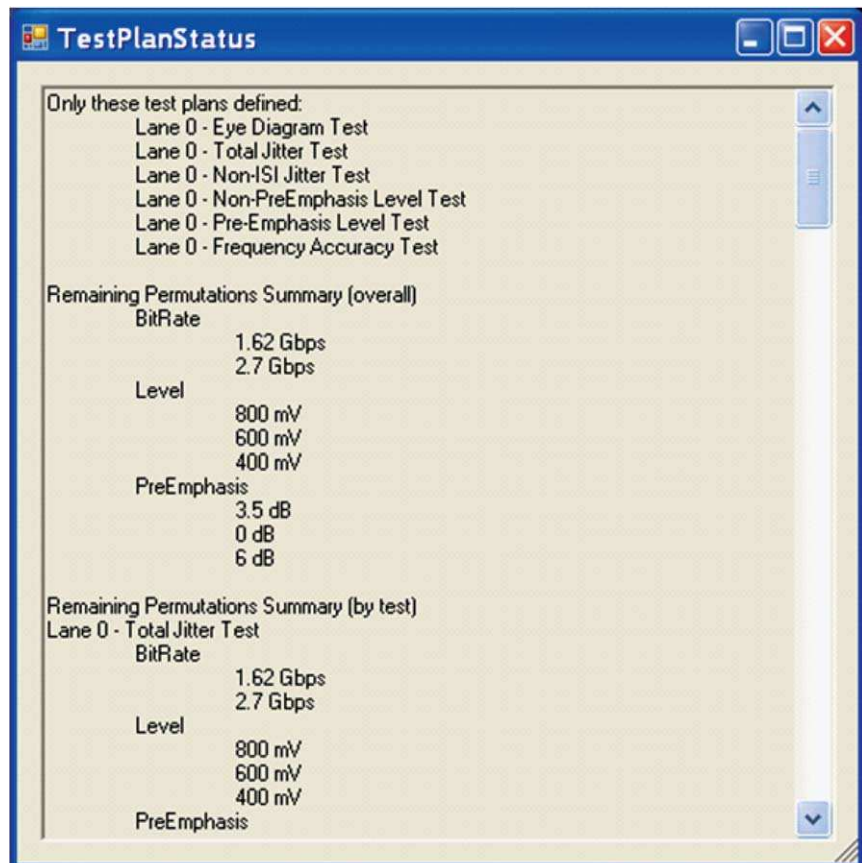


Figure 13: Test Status tracking: when all tests are complete there are no entries below 'Remaining Permutations Summary'

Extensibility

You may add additional custom tests or steps to your application using the N5467A User Defined Application (UDA) development tool (www.agilent.com/find/uda). Use UDA to develop functional “Add-Ins” that you can plug into your application.

Add-ins may be designed as:

- Complete custom tests (with configuration variables and connection prompts)
- Any custom steps such as pre or post processing scripts, external instrument control and your own device control

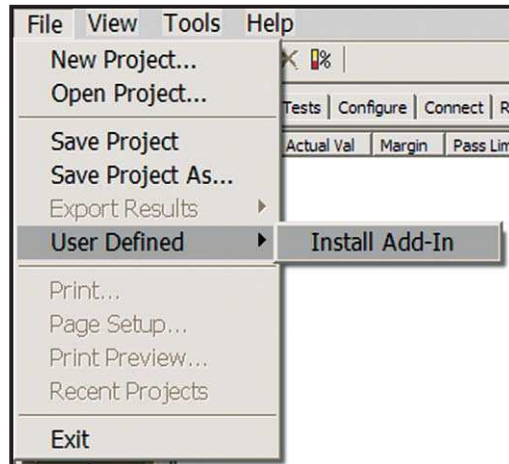


Figure 14. Importing a UDA Add-In into your test application.

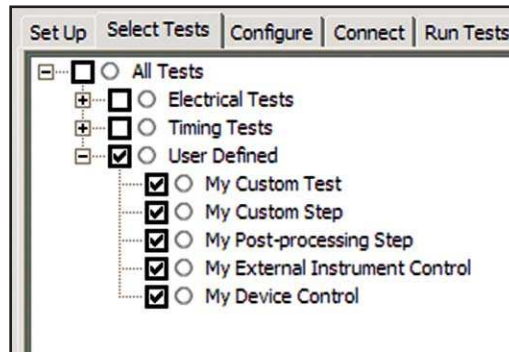


Figure 15. UDA Add-In tests and utilities in your test application.

Automation

You can completely automate execution of your application's tests and Add-Ins from a separate PC using the included N5452A Remote Interface feature (download free toolkit from www.agilent.com/find/scope-apps-sw). You can even create and execute automation scripts right inside the application using a convenient built-in client.

The commands required for each task may be created using a command wizard or from "remote hints" accessible throughout the user interface.

Using automation, you can accelerate complex testing scenarios and even automate manual tasks such as:

- Opening projects, executing tests and saving results
- Executing tests repeatedly while changing configurations
- Sending commands to external instruments
- Executing tests out of order

Combine the power of built-in automation and extensibility to transform your application into a complete test suite executive:

- Interact with your device controller to place it into desired states or test modes before test execution.
- Configure additional instruments used in your test suite such as a pattern generator and probe switch matrix.
- Export data generated by your tests and post-process it using your favorite environment, such as MATLAB, Python, LabVIEW, C, C++, Visual Basic etc.
- Sequence or repeat the tests and "Add-In" custom steps execution in any order for complete test coverage of the test plan.

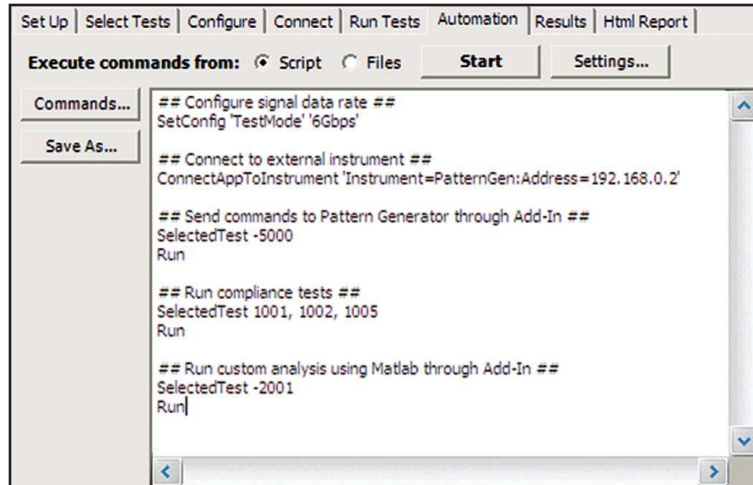


Figure 16. Remote Programming script in the Automation tab.

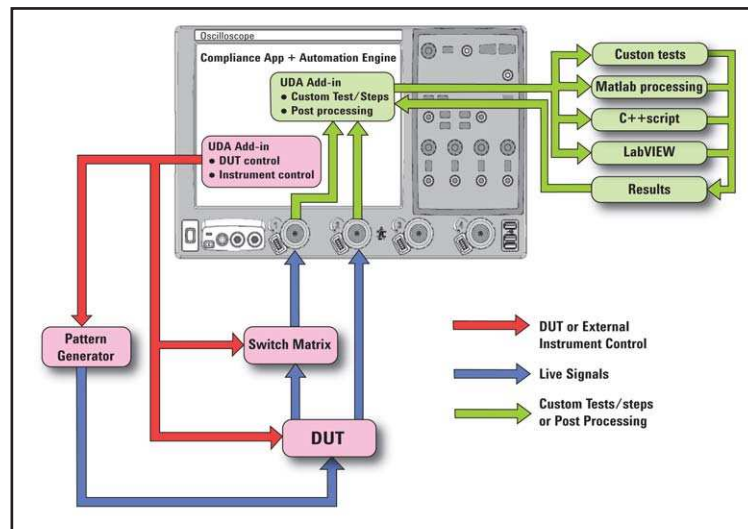


Figure 17. Combine the power of built-in automation and extensibility to transform your application into a complete test suite executive.

DisplayPort Test Point Adapters

DisplayPort has recently added other connector forms in addition to the original standard connector. These include the Mini-DP connector and most recently the eDP connector and since DisplayPort is becoming an enabling technology for portables and for consumer electronics more of these should be expected. The U7232B DisplayPort Electrical Performance Validation and Compliance software is not limited by the test point adapter you choose.

The W2641B DisplayPort TPA test fixture simplifies the measurement process by providing access to the electrical measurement points required for compliance tests. It breaks out the DisplayPort data lanes to pairs of SMP connectors for high-bandwidth probing with either direct connection to scope channels, or to InfiniiMax SMA differential probes through short SMP-to-SMA cables. Of course, single-ended measurements are supported as well. To support DisplayPort AUX Channel for device control, the AUX lines can be jumpered to a DisplayPort connector for cable connection to an AUX Channel Controller. For Physical Layer AUX channel testing required for CTS 1.1a and beyond, four sections are available to verify signal level and termination impedance.

W2621B DisplayPort Test Point Adapter



Figure 18. The Agilent W2641B DisplayPort test point adapter fixture

Measurement requirements

To use the U7232B electrical Electrical Performance Validation and Compliance software with any test point adaptor you will need the cables and other sundry components. The Agilent W2641B DisplayPort TPA fixture comes with four right angle SMP to SMA phase matched cable pairs and jumper cables as well for the AUX sections. Use of differential probe amplifiers (1169A,2800A) and appropriate SMA probe heads (N5380A,5444A) is optional. However, if you want connection simplicity, consider these probes for one-time setup and complete characterization for all differential measurements. You can minimize test time by using four InfiniiMax probes to measure all four Main Link differential data lanes (Lane0, Lane1, Lane2, Lane3) without having to reposition or reconnect probes. To use this capability, select Connection Type: Differential Probe, Number of Channels: Four Channels in the Setup screen.

If you are not using the W2641B test fixture, you can still use the U7232B DisplayPort Electrical Performance Validation and Compliance software but you will need to consider the connection to the oscilloscope. If other test point adaptors are used, connectivity kits including phase matched 1 meter SMA cables and adaptor board for manual hot plug or automation will be required. If you are not using a Test point adaptor but probing signals with solder in differential probes or browsers then you will need to select the appropriate probe head for the task and the probe amplifier system you are using. For instance, if the high speed signals are only accessible through a terminated 50-ohm transmission line (for testing silicon devices for example), you will need to use the N5381A or N5425A ZIF probes solder-in differential probe head for differential probing and select these in the scope channel setup menu.

Oscilloscope compatibility

The U7232B DisplayPort Electrical Performance Validation and Compliance software is compatible with new Agilent 90000 Series oscilloscopes with operating software revision A 3.50 or higher (Windows 7 or XP). For oscilloscopes with earlier software revisions, free upgrade software is available at http://www.agilent.com/find/infiniium_software.

Tests performed

The U7232B DisplayPort Electrical Performance Validation and Compliance software performs all the required tests and many of the informative ones as listed in the DisplayPort Compliance Test Specification 1.2b (CTS 1.2b) as documented in sections 3 and 8.

* **Note:** These tests omitted for DisplayPort CTS 1.1

** Tests 8.3 and 8.4 are easily accomplished on a source device with use of Agilent W2641B Testpoint Access Adapter, a 3.3 Volt power supply, and a voltmeter.

Note that the U7232B DisplayPort test software can make other measurements not included here, such as receiver eye measurements and equalized eye measurements as well most of the newly omitted CTS 1.1 measurements.

Oscilloscope bandwidth	Agilent oscilloscopes for DisplayPort compliance test*	
	Recommended new purchase	Suitable oscilloscopes
13 GHz*	DSO91304A or DSA91304A††	
16 GHz		DSO/DSAX91604A†††
20 GHz		DSO/DSAX92004A
25 GHz		DSO/DSAX92504A
28 GHz		DSO/DSAX92804A
32 GHz		DSO/DSAX93204A

* 13 GHz Bandwidth is recommended by the DisplayPort Compliance Test Specification

†† DSO90000 Series oscilloscopes are upgradable in bandwidth from 2 to 13 GHz.

DSA models come with Jitter and Serial Data Analysis packages.

††† The Infiniium 90000 X Series oscilloscopes are upgradeable in Bandwidth from 16 to 32 GHz

Table 1: Recommended oscilloscopes and bandwidth for the DisplayPort 1.2 specification

Assertion No. Section 3	Test Description Source Tests	Compliance Status	Included with U7232B
Test ID 3.1	Data Eye Diagram	Normative	Yes
Test ID 3.2	Non Pre-Emphasis Level Verification	Normative	Yes
Test ID 3.3	Pre-Emphasis Level Verification	Normative	Yes
Test ID 3.4	Inter-Pair Skew	Normative	Yes
Test ID 3.5	Intra-Pair Skew	Informative	Yes
Test ID 3.6	Differential Transition Time	Omitted*	Yes
Test ID 3.7	Single-Ended Rise and Fall Mismatch	Omitted*	Yes
Test ID 3.10	AC Common Mode Noise	Informative	Yes
Test ID 3.11	Non-ISI Jitter Measurements	Normative	Yes
Test ID 3.12	Total Jitter Measurements	Normative	Yes
Test ID 3.14	Main Link Frequency Compliance	Normative	Yes
Test ID 3.15	Spread Spectrum Modulation Frequency	Normative	Yes
Test ID 3.16	Spread Spectrum Modulation Deviation	Normative	YES
Test ID 3.17	Spread Spectrum dF/dt	Informative	No
Test ID 3.18	Dual Mode: TMDS Clock	Normative	Yes
Test ID 3.19	Dual Mode: TMDS Eye Diagram Testing	Normative	Yes
Section 8	Common Tests		
Test ID 8.1	AUX Manchester- Channel Eye	Normative	Yes
Test ID 8.2	AUX Manchester Channel Sensitivity Test	Normative	Yes
Test ID 8.3	Aux Channel DC Test: Aux - Termination	Normative	Yes
Test ID 8.4	Aux Channel DC Test: Aux + Termination	Normative	Yes
Test ID 8.5	Inrush/Outrush Tests	Normative	Yes
Test ID 8.6	DP_PWR DC Levels	Normative	No
Test ID 8.7	DP_PWR Current	Normative	No

Table 2. DisplayPort electrical tests performed by the U7232B software

Ordering information

Ordering information

To purchase the U7232B DisplayPort electrical performance validation and compliance software with a new or existing Infiniium 90000 or 90000 X-Series oscilloscope, order the following:

Model number	Description	Quantity
DSA91304A	Oscilloscope (see Table 1)	1
U7232B DSO90000-045	DisplayPort test compliance software for Infiniium Series oscilloscopes. Order DSO90000-045 for new purchase. U7232B-001 for new DisplayPort app on existing scope, or U7232B-002 for DisplayPort Upgrade	1
1169A	12-GHz probe Amplifiers.	4 (optional)
N5380A	12-GHZ SMA probe heads for differential and single-ended measurements	4 (optional)
DSO90000-012 N5461A	Equalization software. For new purchases add DSO90000-012. For existing frames order N5461A	1 (optional)
DSA-X9xx04A	Oscilloscope (see Table 1)	1
DSOX90000-045	DisplayPort test compliance software for Infiniium Series oscilloscopes.	1
N2800A	Probe Amplifiers	4 (optional)
N5444A	Probe head (or use adapter, N5442A with 1169 amplifiers and N5380As).	4 (optional)
DSOX90000-012 N5461A	Equalization software. For new purchases add DSOX90000-012. For existing frames order N5461A	1 (optional)

Test Point Access Adapters

For physical connection to a DisplayPort device to perform tests with the U7232B DisplayPort Compliance Test Software, order one or more of the following:

Model number	Description	Quantity
W2641B	DisplayPort Test Point Access Adapter (Plug)	1
BIT-mDP-PTF-0001	Mini-DP Plug Test Point Access Adapter	1
BIT-eDP-PTF-0001	eDP Plug Test Point Access Adapter	1
BIT-DP-PTF-0003	Standard DisplayPort Plug Test Point Access Adapter	1
BIT-DP-RTF-0003	Standard DisplayPort Receptacle Test Point Adapter. Used in Cable Test or Sink system calibration	As needed
BIT-DP-CONN-0001	Connection Kit for Bitifeye Fixtures. Includes 2 matched sets of SMA-SMA 1 meter cables and low frequency adaptor board.	1

Fixtures with Prefix 'BIT' are procured through BitifEye Corporation

Measurement and test accessories

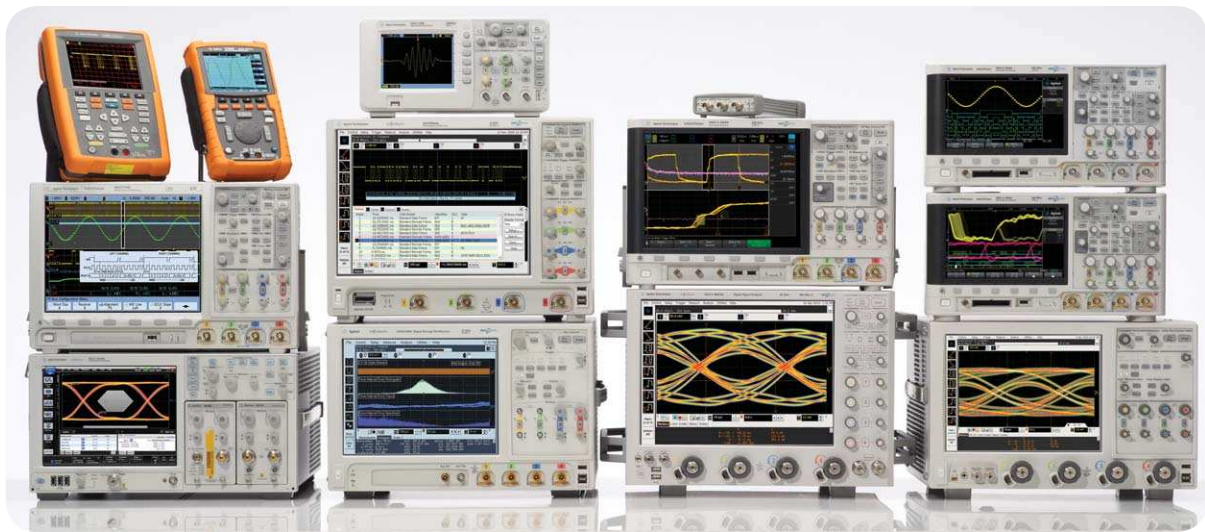
To complete your test setup, Agilent provides a wide range of cables, adapters, terminations, etc.

Model number	Description
11667B	Power splitter, DC to 26.5 GHz, 3.5- mm (f) connectors
11636B	Power divider, DC to 26.5 GHz, 3.5-mm (f) connectors
8493B	Coaxial attenuator (3, 6, 10, 20 or 30 dB), DC to 18-GHz, SMA connector
1250-1158	SMA (f - f) adapter, DC to 18 GHz
1250-1159	SMA (m - m) adapter, DC to 18 GHz
1250-1397	Right-angle adapter, SMA (m - m)
1250-1741	Right-angle adapter, SMA (f - m)
1250-1698	SMA tee adapter (m, f, f), DC to 12.4 GHz
1250-1694	SMA (m) to SMA (f) Adapter
15442A	Cable kit, four 90-cm (36-in) SMA (m - m) cables
15443A	Matched cable pair, two 90-cm (36-in) SMA (m - m) cables, propagation delay within 25 ps
1810-0118	SMA (m) 50 Ω termination
33SMA-Q50-0-4	SMA push-on adaptors from S.M. Electronics (or equivalent)

Related literature

Publication title	Publication type	Publication number
<i>Infiniium DSO90000 and DSA90000 Series Oscilloscopes</i>	Data sheet	5989-7819EN
<i>Infiniium DSA-X90000 Series</i>	Data sheet	5990-5271EN
<i>N5399B HDMI Electrical Performance Validation and Compliance Software</i>	Data sheet	5990-5299EN
<i>W2641B HDMI Test Point Access Fixtures</i>	Data sheet	5990-6541EN
<i>N5990 Automation Software</i>	Data sheet	5989-5483EN

For copies of this literature, contact your Agilent representative or visit www.agilent.com/find/scope-apps



Agilent Technologies Oscilloscopes

Multiple form factors from 20 MHz to > 90 GHz | Industry leading specs | Powerful applications



www.agilent.com/find/myagilent

A personalized view into the information most relevant to you.



www.axiestandard.org

AdvancedTCA® Extensions for Instrumentation and Test (AXIe) is an open standard that extends the AdvancedTCA for general purpose and semiconductor test. Agilent is a founding member of the AXIe consortium.



www.lxistandard.org

LAN eXtensions for Instruments puts the power of Ethernet and the Web inside your test systems. Agilent is a founding member of the LXI consortium.



www.pxisa.org

PCI eXtensions for Instrumentation (PXI) modular instrumentation delivers a rugged, PC-based high-performance measurement and automation system.

Agilent Channel Partners

www.agilent.com/find/channelpartners

Get the best of both worlds: Agilent's measurement expertise and product breadth, combined with channel partner convenience.



Agilent Advantage Services is committed to your success throughout your equipment's lifetime. We share measurement and service expertise to help you create the products that change our world. To keep you competitive, we continually invest in tools and processes that speed up calibration and repair, reduce your cost of ownership, and move us ahead of your development curve.

www.agilent.com/find/advantageservices



www.agilent.com/quality

Windows® is a U.S. registered trademark of Microsoft Corporation.

For more information on Agilent Technologies' products, applications or services, please contact your local Agilent office. The complete list is available at:

www.agilent.com/find/contactus

Americas

Canada	(877) 894 4414
Brazil	(11) 4197 3600
Mexico	01800 5064 800
United States	(800) 829 4444

Asia Pacific

Australia	1 800 629 485
China	800 810 0189
Hong Kong	800 938 693
India	1 800 112 929
Japan	0120 (421) 345
Korea	080 769 0800
Malaysia	1 800 888 848
Singapore	1 800 375 8100
Taiwan	0800 047 866
Other AP Countries	(65) 375 8100

Europe & Middle East

Belgium	32 (0) 2 404 93 40
Denmark	45 45 80 12 15
Finland	358 (0) 10 855 2100
France	0825 010 700*
	*0.125 €/minute
Germany	49 (0) 7031 464 6333
Ireland	1890 924 204
Israel	972-3-9288-504/544
Italy	39 02 92 60 8484
Netherlands	31 (0) 20 547 2111
Spain	34 (91) 631 3300
Sweden	0200-88 22 55
United Kingdom	44 (0) 118 927 6201

For other unlisted countries:

www.agilent.com/find/contactus

Revised: October 11, 2012

Product specifications and descriptions in this document subject to change without notice.

© Agilent Technologies, Inc. 2012
Published in USA, December 19, 2012
5990-7697EN

