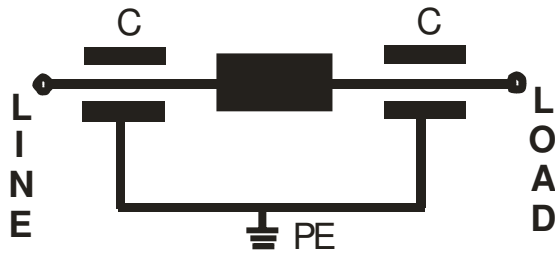


# P Series

Single Line- Pi Circuit



## Electrical schematic



## General Specifications

Maximum operating voltage: 250VAC / 400VDC.

Operating frequency: DC - 60Hz.

Hi-pot test voltage: L/N→PE: 3000Vdc 2s.

Climatic category: HPF (40/085/56)

(-40°C/+85°C/95% RH, 30d).

MTBF: > 0.3 Million Hours@40°C,230VAC

Flammability class: UL 94 V0.

## Single Line, Pi Circuit

For Telecom, Military and Industrial application.

Compact size and easy to install.

\* High Current version is available

## Product List

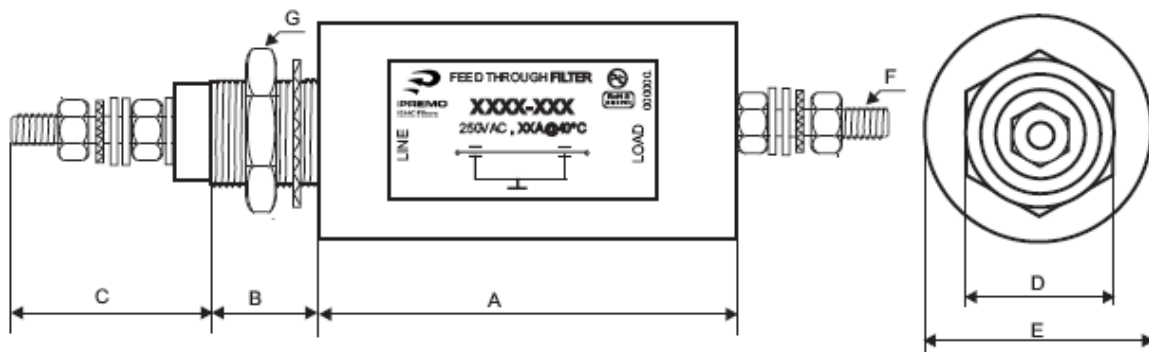
TYPE	Rated Current (A) @ 40 °c	Rated Capacitance @ 1KHz,25 °c	Leakage Current 250VAC / 50Hz (mA)	Termination	Torque on S (Nm)	Mounting Thread	Weight (gr)
X-10290-014	10	2 x 10nF	2.4	M3	0.5	M12 x 1	45
X-10290-015	16	2 x 22nF	5.0	M4	1.2	M16 x 1	70
X-10290-016	32	2 x 47nF	10.0	M4	1.2	M24 x 1	135
X-10290-017	63	2 x 470nF	100	M6	2.5	M32 x 1.5	420

# P Series

## Single Line- Pi Circuit



### Mechanical Dimensions (mm)



	10A	16 A	32 A	63 A
A	66	69	101	118
B	12	14	14	19
C	16	18	18	26
D	17	22	22	41
E	20	25	25	54
F	M3	M4	M4	M6
G	M12 x 1	M16 x 1	M16 x 1	M32 x 1.5

### Installation Guide

- The torque applied to the screw cannot exceed max level.
- Filter metal housing must be well connected to cabinet panel by electrically and make good grounding.
- The input & output wires should be separated to avoid noise coupling.
- Input wire of filter connection should be short and it will help to minimize radiated interferences.
- Make good insulation around the connection part to avoid short circuit.
- Further information, please contact PREMO Technical person.

# P Series

Single Line- Pi Circuit



## Insertion Loss

