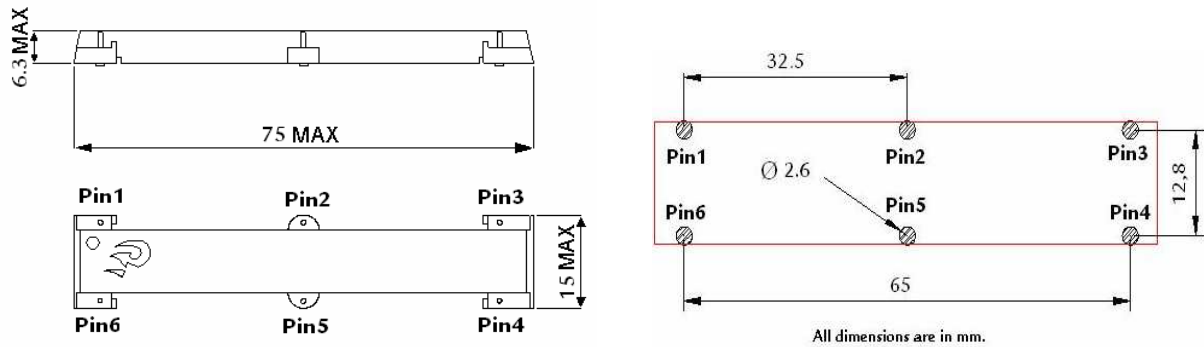


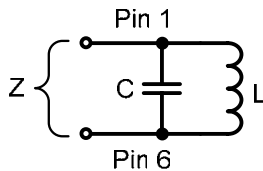
1. Dimensions and Pad Layout



All Dimensions in mm
 General Tolerances ± 0.1 mm

PCB area (surface and internal layers) for welding the antenna must be free of Ground or Power Supply plane in order to achieve a right behaviour of the antenna.

2. Schematic Diagram



L: Ferrite core coil inductance
 C: Tuning internal capacitor COG
 Z: External impedance

3. Materials

- Core:** Ferrite Core
- Wire:** Enamelled and Selfbonding copper wire
- Capacitor:** COG ceramic capacitor
- External housing:** material DAP
- Resin:** material epoxy (part filled with resin potting)

Remark : Products comply with RoHS requirements

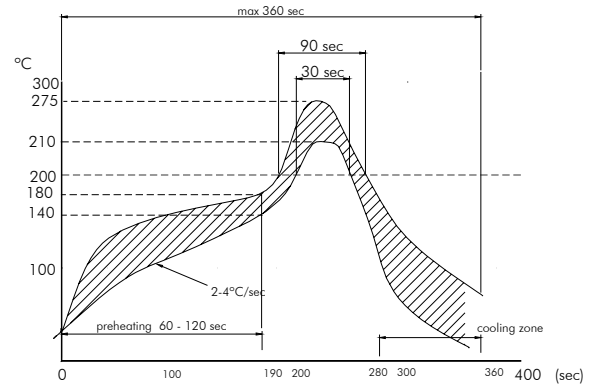


C/Severo Ochoa 33 - Parque Tecnológico de Andalucía. 29590 Campanillas. Málaga (Spain) Phone +34 951 231 320 Fax +34 951 231 321
E-mail: info@grupopremo.com Web <http://www.grupopremo.com>

4. General Specifications and recommended reflow profile

Storage Temperature -20 °C → +85 °C

Operating Temperature -20 °C → +85 °C



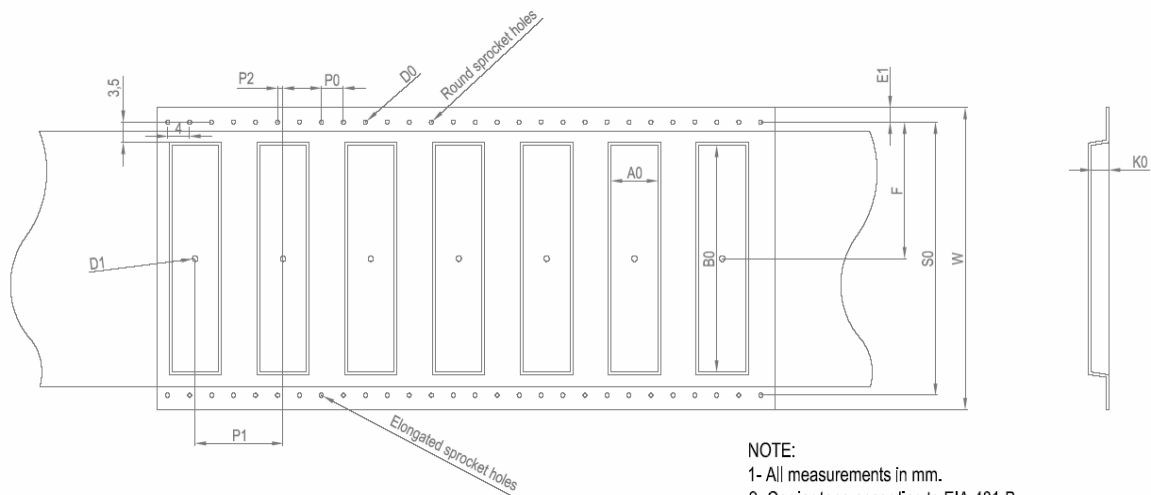
5. Electrical Characteristics

RCA-SMD-XXA

Code	L (mH)	C res (nF)	Tuning Freq (KHz)	Length (mm)	Width (mm)	Height (mm)
RCA-SMD-77A	1.3	3.3	77.5 ± 0.2	75	15	6.3
RCA-SMD-60A	2.1	3.3	60 ± 0.2			

6. Packaging Information

TAPING SPECIFICATION (According to EIA481)

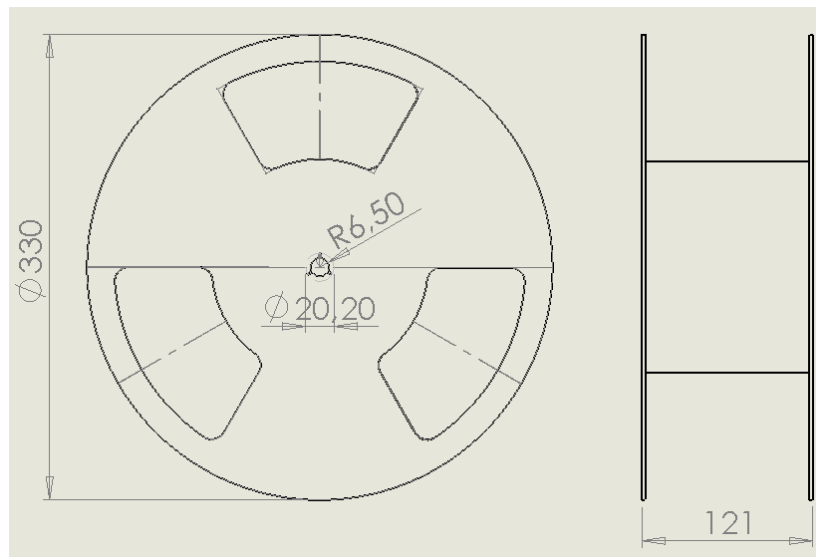


C/Severo Ochoa 33 - Parque Tecnológico de Andalucía. 29590 Campanillas. Málaga (Spain) Phone +34 951 231 320 Fax +34 951 231 321
E-mail: info@grupopremo.com Web <http://www.grupopremo.com>

Symbol	Dimension	Tolerance
D0	1.5	+0.1/-0.0
D1	2.0	Min.
E1	1.75	± 0.1
P0	4.0	± 0.1
P2	2.0	± 0.2
F	50.2	± 0.35
P1	32	± 0.1
S0	100.4	± 0.1
W	104.0	± 0.3

Symbol	Dimension	Tolerance
A0	17	± 0.2
B0	78	± 0.3
K0	7.5	± 0.2

REEL



PARTS PER REEL

330mm \varnothing
100

MATERIAL LIST

Reel	Polystyrene
Carrier tape	PS 04
Cover tape	Polyester

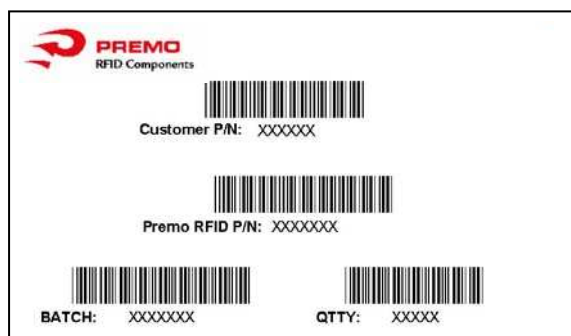
7.- Printing and Labelling

PART PRINTING

PART NUMBER

BATCH/DATE

PACKAGE LABELLING



Edition	Revision Date
1	03/06/09