

# PF

## General Purpose Single Phase Filter (50-150A)

Single - Phase Filters

### General Purpose

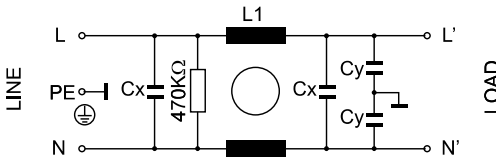
Chasis mounting single stage filter for general purpose.  
High current.



### General Specifications

Maximum operating voltage: 250Vac.  
Operating frequency: DC - 60Hz.  
Hipot test voltage:  
L/N->PE: 1800Vac 2s.  
L->N: 1700 Vdc 2s.  
Application class:  
HPF Acc. TO DIN 40040  
(-25°C/+85°C/95% RH, 30d).  
Flammability class:UL 94 V2.

### Electrical schematics



### Product List

TYPE	I	L1	CX	CY	HOUSING	LCURRENT	CONNECTION	WEIGHT ±g
PF-50W	50 Amp	0,45 mH	2,2 µF	10 nF	274	0,97mA	M6 SCREW	3350
PF-100W	100 Amp	0,31 mH	2,2 µF	10 nF	274	0,97mA	M6 SCREW	3950
PF-150W	150 Amp	0,28 mH	2,2 µF	10 nF	275	0,97mA	M10 SCREW	3950

### Insertion Loss

----- ASYM  
——— SYM

