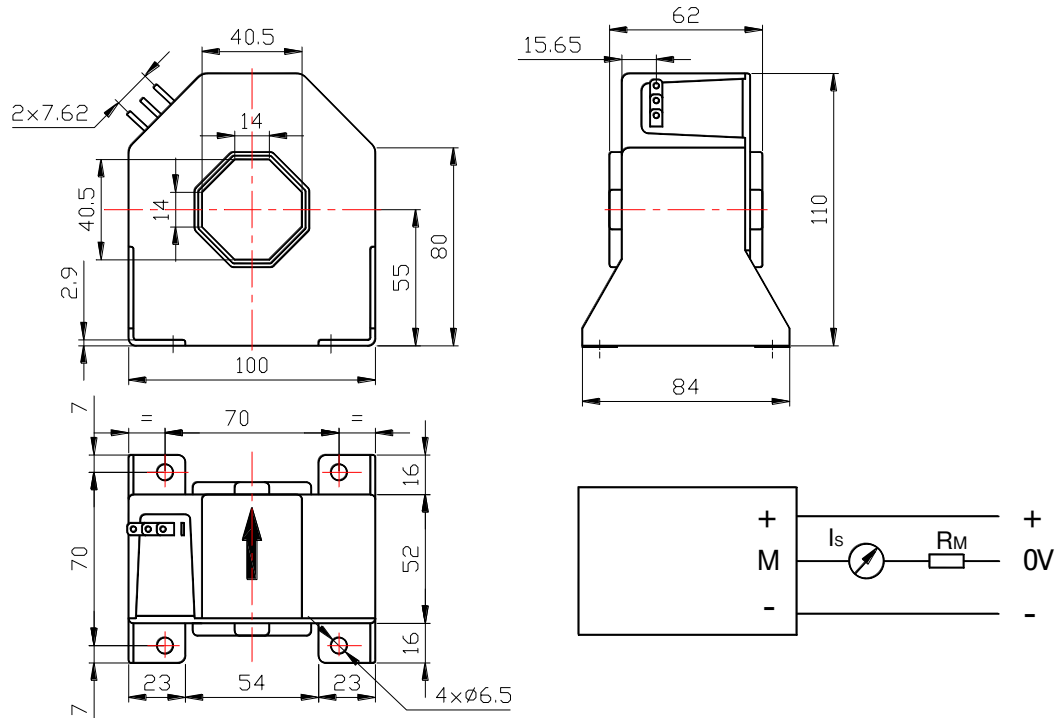
	CUSTOMER	CUSTOMER CODE	PART DESCRIPTION CLOSE LOOP HCT 1000A 1:5000 (C.OUTPUT)		
	INTERNAL CODE HCT-1000SH	DATE 1/14/11	EDITION 2	DOCUMENT NAME HCT-1000SH_2.doc	PAGE 1/4

CLOSE LOOP HCT 1000A 1:5000 (C.OUTPUT)

NOTES	
All rights reserved. Passing on of this document, use and communication of contents not permitted without written authorisation.	

	CUSTOMER	CUSTOMER CODE	PART DESCRIPTION CLOSE LOOP HCT 1000A 1:5000 (C.OUTPUT)		
	INTERNAL CODE HCT-1000SH	DATE 1/14/11	EDITION 2	DOCUMENT NAME HCT-1000SH_2.doc	PAGE 2/4

1.- DIMENSIONS




All dimensions are in mm.

General Tolerance according to ISO2768-C.

All dimensions and mechanical fixations are subjected to change depending on the customer necessities and PREMO Transducer Development.

NOTES

All rights reserved. Passing on of this document, use and communication of contents not permitted without written authorisation.

	CUSTOMER	CUSTOMER CODE	PART DESCRIPTION CLOSE LOOP HCT 1000A 1:5000 (C.OUTPUT)		
	INTERNAL CODE HCT-1000SH	DATE 1/14/11	EDITION 2	DOCUMENT NAME HCT-1000SH_2.doc	PAGE 3/4

2.- ELECTRICAL PARAMETERS

Rated Current	1000 A	
Measuring Range	3000A	I_p
Rated output current	200±0.1% mA	I_s
Turns Ratio	1:5000	N
Supply Voltage	± 15~±24V	V_{cc}
Compensation Winding Maximum Resistance (T = 25°C)	32 Ω	R_c
Burden Resistor Range T = 25°C	0-30ohm (with ±15V @±1000A max)	
	0-5ohm (with ±15V @±1500A max)	
	0-68ohm (with ±24V @±1000A max)	
	0-3ohm (with ±24V @±3000A max)	

3.- ACCURACY

Linear Error (Full Scale)	≤0.1 %FS	e_{LLR}
Response time	<1us	
Offset drift Current	± 0.2mA	I_{os}
Offset Current temp -40°C-85°C Drift	± 0.5 mA	K_{Ios}
di/dt Followed Accurately	> 100A/us	
Frequency Bandwidth	DC to 150kHz(-3dB)	F_c

4.- GENERAL DATA

Operating Temperature	-40 to +85 °C	T_A
Storage Temperature	-40 to +125 °C	T_s

5.- ISOLATION CHARACTERISTICS

Galvanic isolation (50 Hz, 1min)	6KV	V_i
----------------------------------	-----	----------------------

STANDARDS


- Isolated plastic case recognized according to UL94-V0.
- EN60947-1: 2004
- IEC60950-1 : 2001
- EN-50178:1998




NOTES

All rights reserved. Passing on of this document, use and communication of contents not permitted without written authorisation.



	CUSTOMER	CUSTOMER CODE	PART DESCRIPTION CLOSE LOOP HCT 1000A 1:5000 (C.OUTPUT)		
	INTERNAL CODE HCT-1000SH	DATE 1/14/11	EDITION 2	DOCUMENT NAME HCT-1000SH_2.doc	PAGE 4/4

6.- Marking

 HCT-1000SH	
-	NOM:200mA/1000A
M	MIN:2mA/10A
+	MAX:600mA/3000A

7.- EDITION CONTROL

Edition	Date	Change description	Made by
1 st	3/12/10	First Edition	Maria
2 nd	1/14/11	Remove customer and modify the marking	Maria

NOTES

All rights reserved. Passing on of this document, use and communication of contents not permitted without written authorisation.

