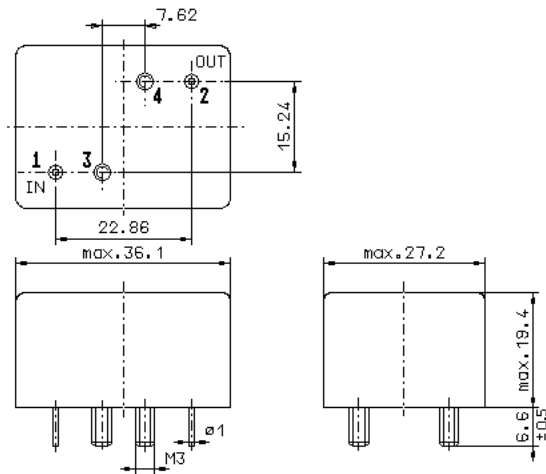


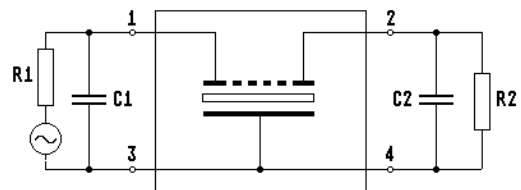
Specification for monolithic crystal filter **MQF 10.7 - 2400 / 07**

1. General

1.1. Case:



GM11.0



Note: Pin 2 - Output Pin 3 - Ground

- | | |
|-----------------------------------|------------------|
| 1.2. Type name: | MQF 10.7-2400/07 |
| 1.3. Number of poles: | 8 |
| 1.4. Operable temperature range: | -55°C to 80°C |
| 1.5. Operating temperature range: | -55°C to 70°C |
| 1.6. Storage temperature range: | -55°C to 85°C |

2. Electric values

- | | |
|-----------------------------------------------------------------------------|-------------------------------------|
| 2.1. Nominal centre frequency f_0 : | 10.7 MHz |
| 2.2. Pass band | |
| 2.2.1. Centre frequency f_c (at 25°C): | 10.7 MHz \pm 200 Hz |
| 2.2.2. Bandwidth between 3 dB - frequencies: | $\geq f_0 \pm 12$ kHz |
| 2.2.3. Ripple: | ≤ 2.0 dB at $f_0 \pm 10.0$ kHz |
| 2.2.4. Insertion loss:
(measured on smallest attenuation in pass band) | ≤ 4.5 dB |
| 2.3. Stop band | |
| 2.3.1. $f_0 \pm 20$ kHz | ≥ 40 dB |
| 2.3.2. $f_0 \pm 25$ kHz | ≥ 60 dB |
| 2.3.3. Alternate attenuation ($f_0 \pm 50$ kHz) | ≥ 90 dB |
| 2.4. Terminating impedance (input and output) | 2700 Ω // 25 pF |
| 3. Marking on the case: | firm, year week
MQF 10.7-2400/07 |
| 4. Environment conditions: | Corresponding to Telefilter CF001 |

Edited by: _____ date: _____ name: _____