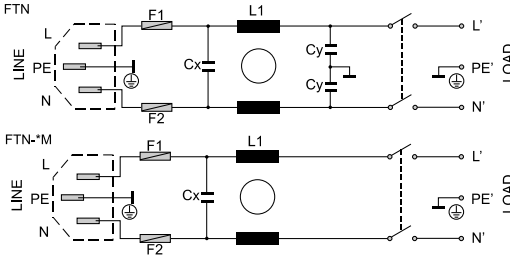


FTN

IEC Connector Filter

Electrical schematics



RFI Power Line Filters

General Specifications

Maximum operating voltage: 250Vac.
 Operating frequency: DC - 60Hz.
 Hipot test voltage: L/N->PE: 1800Vac 2s.
 (2500Vac for M version)
 L->N: 1700 Vdc 2s.

Application class: HPF Acc. TO DIN 40040
 (-25°C/+85°C/95% RH, 30d).
 Flammability class: UL 94 V2.

IEC connector filter

With IEC connector, fuses and switch.
 General purpose filter.
 M: For electromedical applications.

Product List

TYPE	I	L1	CX	CY	HOUSING	L.CURRENT	CONNECTION	WEIGHT ±g
FTN-1Z	1 Amp	2 mH					FASTON 6,3mm	110
FTN-3Z	3 Amp	1,3 mH	100 nF	2,2 nF	250	0,21mA	FASTON 6,3mm	110
FTN-6Z	6 Amp	0,8 mH					FASTON 6,3mm	110
FTN-1ZM	1 Amp	2 mH					FASTON 6,3mm	110
FTN-3ZM	3 Amp	1,3 mH	100 nF	-	250	5µA	FASTON 6,3mm	110
FTN-6ZM	6 Amp	0,8 mH					FASTON 6,3mm	110

Insertion Loss

----- ASYM
 ——— SYM

