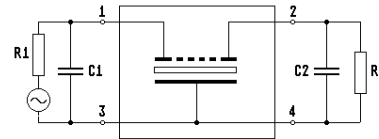
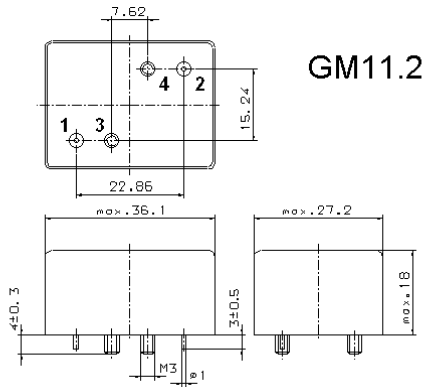


Specification for monolithic crystal filter:

**MQF 10.7-2200/13**

**1. General**

1.1. Case:



Note: Pin 2 - Output Pin 3 - Ground

- |                                   |                  |
|-----------------------------------|------------------|
| 1.2. Type name:                   | MQF 10.7-2200/13 |
| 1.3. Number of poles:             | 8                |
| 1.4. Operating temperature range: | -40°C to 70°C    |
| 1.5. Storage temperature range:   | -45°C to 85°C    |

**2. Electric values**

- |   |                                     |
|---|-------------------------------------|
| 2.1. Nominal centre frequency fo:   | 10.7 MHz                            |
| <b>2.2. Pass band</b>   |                                     |
| 2.2.1. Bandwidth between 3 dB - frequencies:                                | > fo ± 11.0 kHz                     |
| 2.2.2. Ripple:  | < 1.0 dB at fo ± 8.0 kHz            |
| 2.2.3. Insertion loss:<br>( measured on smallest attenuation in pass band ) | < 6.0 dB                            |
| <b>2.3. Stop band</b>   |                                     |
| 2.3.1. fo ± 25 kHz  | > 60 dB                             |
| 2.3.2. alternate attenuation fo ± 1 MHz                                     | > 90 dB (except spurious)           |
| 2.4. Terminating impedance ( input and output ):                            | 910 Ω // 25 pF                      |
| 2.5. Maximal input power level  | 10 dBm                              |
| 3. Marking on the case:   | firm, year week<br>MQF 10.7-2200/13 |
| 4. Environment conditions:  | Corresponding to Telefilter CF001   |

Edited by: \_\_\_\_\_ date: \_\_\_\_\_ name: \_\_\_\_\_