

# FB

## High Attenuation Single Phase Filter (1-20 A)

Single - Phase Filters

### General Purpose

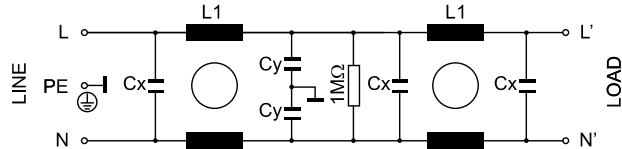
Double stage filter.  
High attenuation.  
General purpose applications with high EMI levels.

### General Specifications

Maximum operating voltage: 250Vac.  
Operating frequency: DC - 60Hz.  
Hipot test voltage:  
L/N->PE: 1800Vac 2s  
L->N: 1700 Vdc 2s.  
Application class:  
HPF Acc. TO DIN 40040  
(-25°C/+85°C/95% RH, 30d)  
Flammability class: UL 94 V2.



### Electrical schematics



### Product List

TYPE	I	L1	CX	C Y	HOUSING	LCURRENT	CONNECTION	WEIGHT ±g
FB-1X	1 Amp	3 mH	100 nF	4,7 nF	213	0,45 mA	AWG18 WIRE	132
FB-1Z					212		FASTON 6,3mm	126
FB-2X	2 Amp	2 mH	100 nF	4,7 nF	213	0,45 mA	AWG18 WIRE	115
FB-2Z					212		FASTON 6,3mm	109
FB-5X	5 Amp	1,5 mH	100 nF	4,7 nF	213	0,45 mA	AWG18 WIRE	133
FB-5Z					212		FASTON 6,3mm	125
FB-10X	10 Amp	1 mH	100 nF	4,7 nF	217	0,45 mA	AWG18 WIRE	246
FB-10Z					216		FASTON 6,3mm	240
FB-20W	20 Amp	0,8 mH	100 nF	4,7 nF	223	0,45 mA	M6 SGREW	682
FB-20Z					221		FASTON 6,3mm	500

### Insertion Loss

