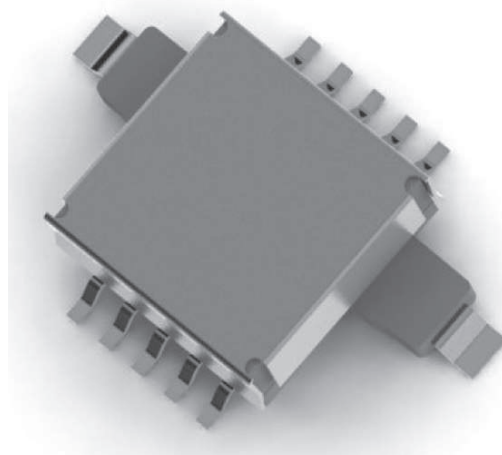


CS-35A

Automotive EV/HEV Isolated SMD Current Transformer up to 35Amps

Features

- Design for high performance 2-3kW SMPS
- Height : 8.5mm MAX, Pick & Place compatible
- Footprint : SMD 31 x 25.5mm MAX
- RMS current rating : up to 35A
- 1:100 turn ratio for 5-10 Ω burden resistor
- Working frequency from 50 to 250kHz
- 3kV isolation between primary and secondary
- Creepage distance > 5mm
- High operating temperature range -40 to +155 $^{\circ}$ C
- AOI (Automatic Optical Inspection) component
- UL94V-0 and RoHS material
- Design compliant with AEC-Q200 requirements
- No thermal aging effect
- Weight : approx. 5g

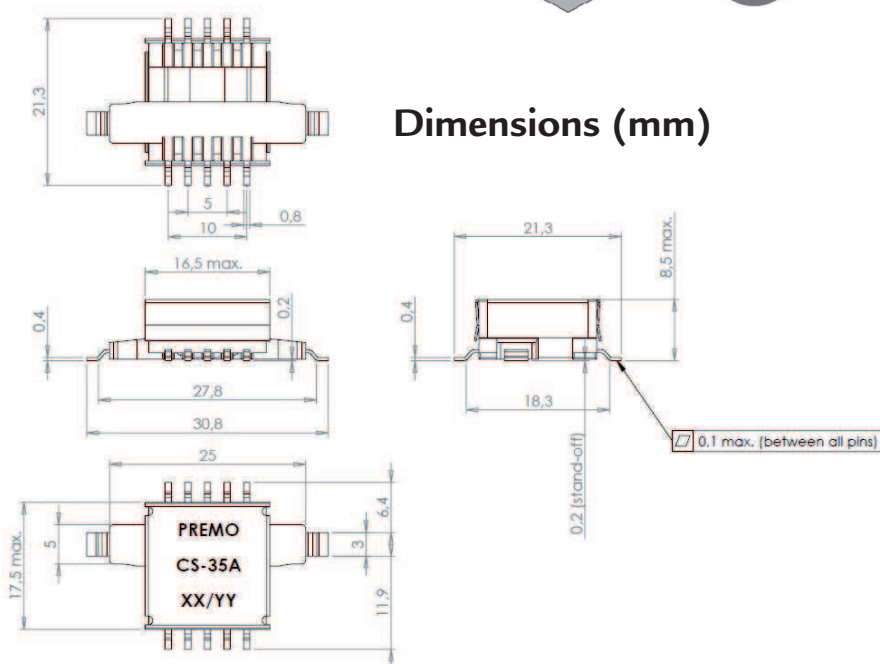
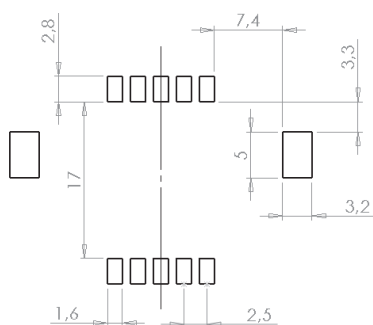


General Application

- Peak current sensing, current measurement for bridge control
- Automotive EV/HEV DC/DC converters and battery chargers
- Industrial high power SMPS



Recommended Pad-Layout



Electrical specifications

Code	Primary Current (Arms)	Secondary Turns	Secondary Inductance MIN (mH)	Secondary DCR MAX (Ω)	Primary DCR MAX (m Ω)	Primary to Secondary Isolation (kVac)
CS-35A	35	100	5	1.6	1	3

Notes

- (1) All test data are referenced to 25 $^{\circ}$ C ambient temperature
- (2) The inductance value is measured at 100kHz/0.1Vac
- (3) The isolation is tested at 50Hz/2sec (1min for qualification)
- (4) The creepage distance is guaranteed > 5mm
- (5) Continuous operating temperature range must be within -40/+155 $^{\circ}$ C (including self-heating of the part)
- (6) A burden resistor value from 5 to 10 Ω is recommended
- (7) The amplitude error is estimated better than +/-2.5% on the 50-250kHz and -40/+155 $^{\circ}$ C range (Rb = 5 to 10 Ω)